

95000 Stack

© 2018 RPS Group

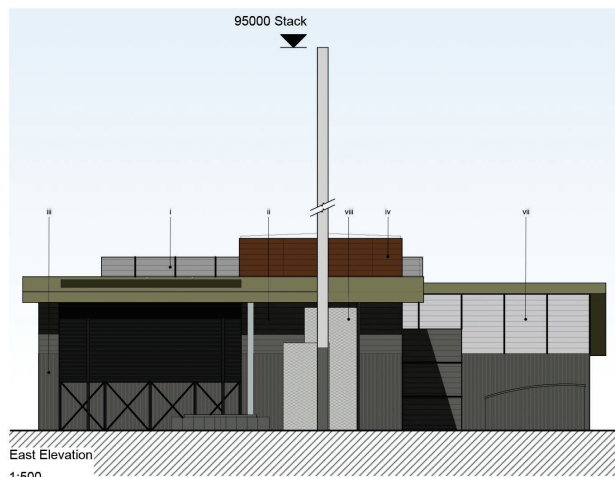
Notes

1. This drawing has been prepared in accordance with the scope of RPS's appointment with its client and is subject to the terms and conditions of that appointment. RPS accepts no liability for any use of this document other than by its client and only for the purposes for which it was prepared and provided.
2. If received electronically it is the recipient's responsibility to print to correct scale. Only written dimensions should be used.
3. This drawing should be read in conjunction with all other relevant drawings and specifications.

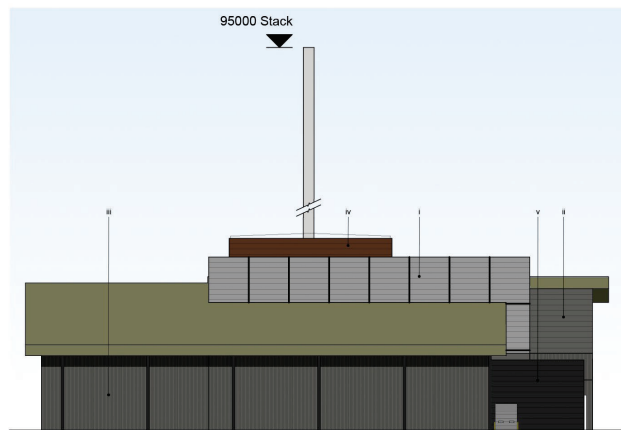
vii v i iv ix ii iii viii vi



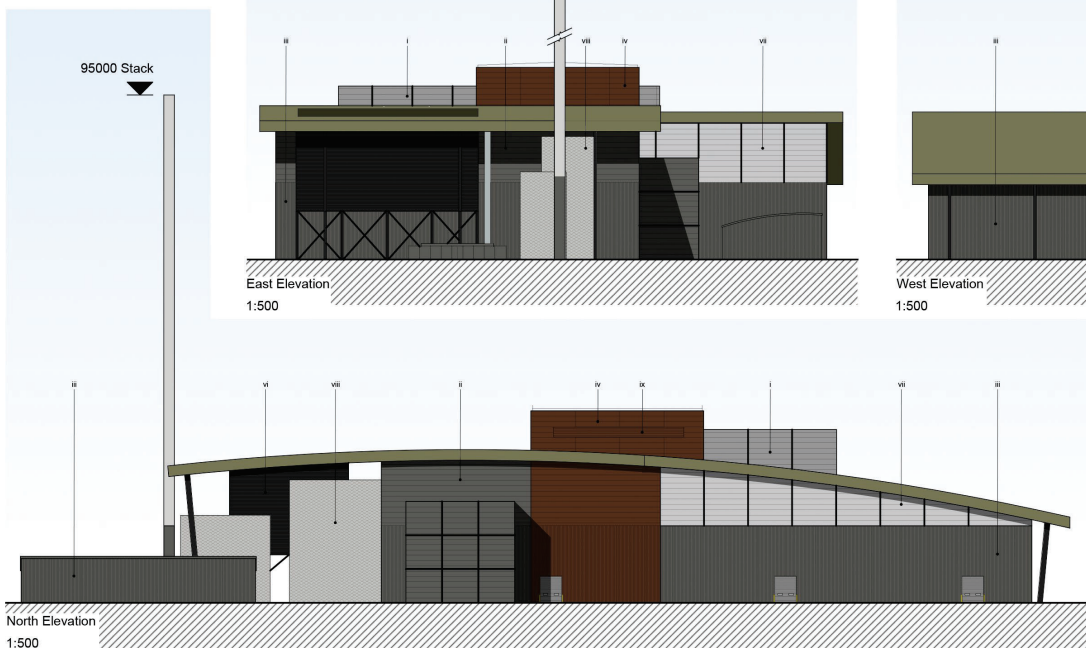
South Elevation  
1:250



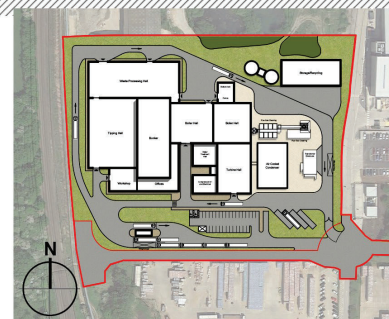
East Elevation  
1:500



West Elevation  
1:500



North Elevation  
1:500



Key Plan  
1:2000

External Materials Key:

- i. Horizontally laid composite microrib cladding panels colour 4000-N or similar approved
- ii. Horizontally laid composite microrib cladding panels colour 7500-N or similar approved
- iii. Vertically laid profiled cladding panels colour 7500-N or similar approved
- iv. Horizontally laid composite microrib cladding panels colour 7010-G70Y or similar approved
- v. Horizontally laid composite microrib cladding panels colour 7005-Y50R or similar approved
- vi. Horizontally laid composite louvre cladding panels colour 3000-N or similar approved
- vii. Horizontally laid polycarbonate translucent panels colour 3000-N or similar approved
- viii. Architectural mesh colour 3000-N or similar approved
- ix. Louvre Polyester Powder Coated Colour 7010-G70Y or similar approved

Flue Stack to be colour 2500-N with colour 7500-N base or similar approved

All Dock doors, Level Access doors and Personnel doors to be colour 3000-N or similar approved

Office Glazed doors, Curtain Walling and window frames to be PPC colour 7500-N or similar approved

Roof to be colour 5010-G70Y or similar approved

Colours taken from the High Weald ACNB Colour Study, Page 38  
BRICK, STONE, TILE



Rev	Description	By	Ckd	Date
P02	Updates to suit new design	JH	RJF	14.03.18
P01	Issued for Planning	JH	RJF	03.11.16



Sherwood House, Sherwood Avenue,  
Newark, Nottinghamshire, NG24 1GQ  
T:01638 605 700 E: rpsnewark@rpsgroup.com

Client



Project Sussex EFW

Title Proposed Elevations

Status Preliminary Scale 1:250 @A1 Date Created 26/08/16  
Project Leader RJF Drawn By JH Checked by RJF

Document Number	Revision	Stability
NG018074-RPS-MB-ZZ-A-DR-0111	P02	SD

