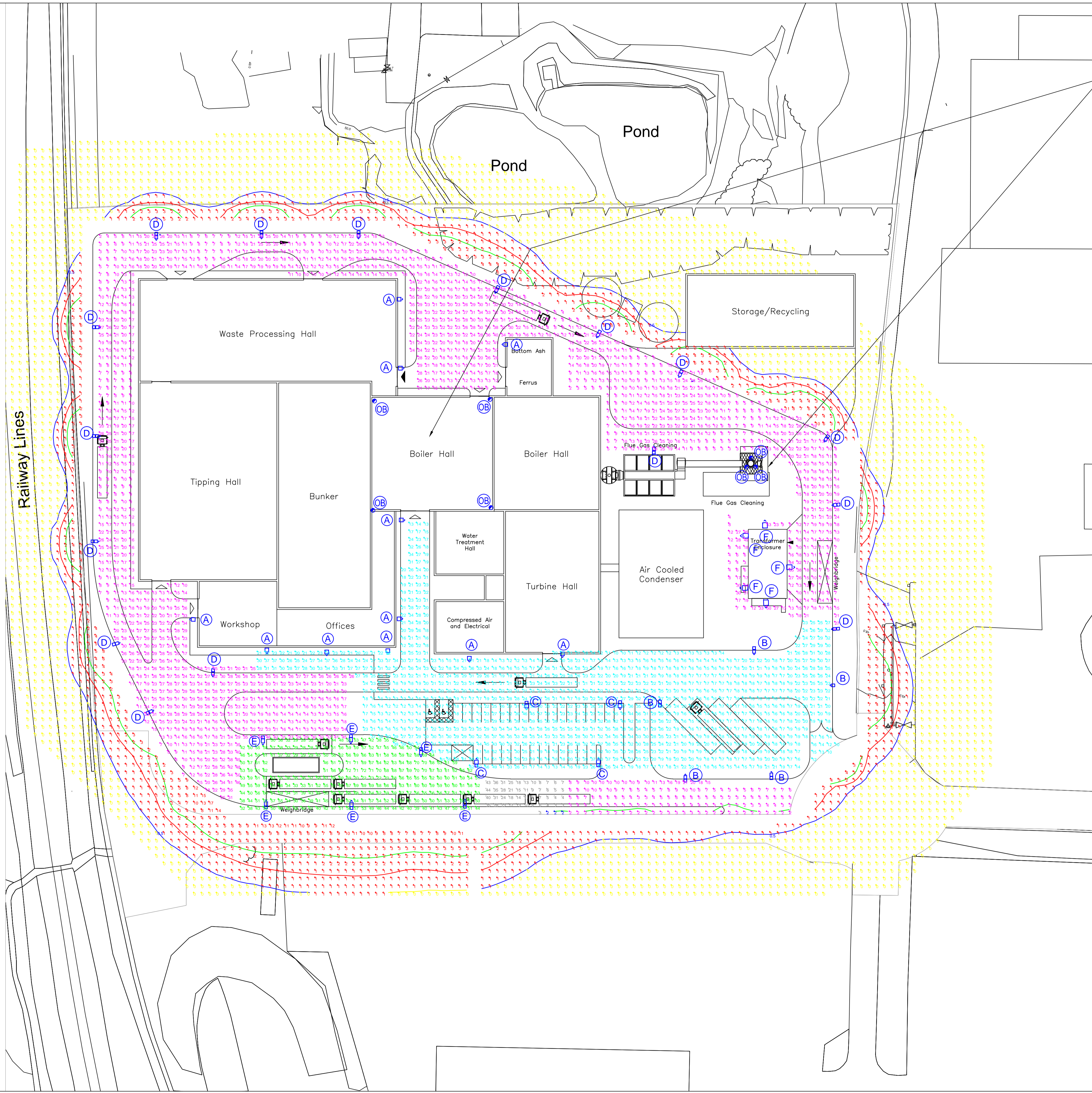
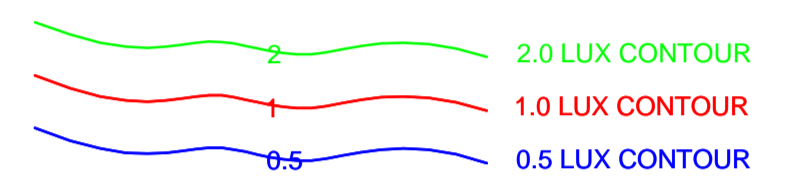


Appendix 2.2: Lighting Strategy



RED OBSTRUCTION LIGHTS
 THE CIVIL AVIATION AUTHORITY CAP REGULATIONS REQUIRES TWO SETS OF RED OBSTRUCTION LIGHTS TO BE INSTALLED. ONE SET OF OBSTRUCTION LIGHTS WILL BE AT THE TOP OF THE CHIMNEY STACK (1.5 M BELOW THE TOP OF THE STACK IN ORDER TO REDUCE THE EFFECTS OF DISCOLOURATION OR EMISSIONS), AND THE OTHER SET IS TO BE FITTED AT 52M BELOW THE TOP OF THE CHIMNEY STACK. MEDIUM INTENSITY RED STEADY OBSTACLE LIGHTS TO BE PLACED AT THE HIGHEST CORNERS OF THE BOILER HALL.

LUX LEVELS					
AREA	Avg	Max	Min	Min/Max	Min/Avg
10 Lux Area	17 lux	65 lux	2	0.03	0.12
20 Lux Area	23 lux	71 lux	10 lux	0.14	0.43
50 Lux Area	54 lux	73 lux	28 lux	0.38	0.52
Spill Light	1 lux	18 lux	0 lux	0.00	0.00



LUMINAIRE SCHEDULE		
Symbol	Qty	Description
	11	Holophane Lighting D-Series 1 Luminaire DSX1.2.LA084.FW mounted on wall @ 6m
	5	Holophane Lighting D-Series 1 Luminaire DSX1.2.LA114.FW BLS mounted on 8m column
	4	Holophane Lighting D-Series 1 Luminaire DSX1.2.LA084.FW mounted on 6m column
	16	Holophane Lighting D-Series 1 Luminaire DSX1.2.LA084.FW. BLS mounted on 6m column
	6	Holophane Lighting D-Series 1 Luminaire DSX1.2.LA224.FW mounted on 8m column
	5	Holophane Lighting Denver Wall Elite DEW.L024.PGL mounted on steelwork @ 3.6m
		Aviation obstruction lighting installed to CAA requirements.

- Notes**
- ALL LUMINAIRES TO UTILISE 4000°K COOL COLOUR TEMPERATURE LEDS.
 - ALL FITTINGS SUPPLIED WITH DALI DIMMING CONTROL GEAR TO ENABLE NIGHT-TIME SET BACK OF ILLUMINATION LEVELS.
 - LIGHTING WITHIN TRANSFORMER COMPOUND WILL BE INTERMITTENT FOR MAINTENANCE.

© 2016 RPS Group

Notes

- This drawing has been prepared in accordance with the scope of RPS's appointment with its client and is subject to the terms and conditions of that appointment. RPS accepts no liability for any use of this document other than by its client and only for the purposes for which it was prepared and provided.
- If received electronically it is the recipient's responsibility to print to correct scale. Only written dimensions should be used.

Safety, Health & Environment Information

In addition to the hazards/risks normally associated with the types of work detailed on this drawing take note below. It is assumed that all works on this drawing will be carried out by a competent contractor, working, where appropriate, to an appropriate method statement.

Construction Risks	Maintenance/Cleaning Risks	Demolition/Adaption Risks

Rev	Status	Description	Date	Initial	Checked
S0	D5	SITE LAYOUT REVISED. LIGHTING AMENDED TO SUIT.	12:03:18	GF	RKP
S0	D4	OBSTRUCTION LIGHTING DETAILS AMENDED.	23:01:17	GF	RKP
S0	D3	GENERAL SITE LUX LEVELS INCREASED. SCHEME ADDED FOR RECYCLING AREA.	13:12:16	GF	RKP
S0	D2	SITE LAYOUT REVISED	05:12:16	GF	RKP

RPS

Highfield House, 5 Ridgeway, Quinton Business Park, Birmingham B32 1AF
 T: 0121 213 5500 E: rpsbm@rpsgroup.com F: 0121 213 5502

Client: **Britaniacrest Recycling**

Project: **Sussex EfW**

Title: **Site Layout External Lighting Levels**

Purpose of Issue: **Information** Drawn By: **GF** PM/Checked by: **RKP**

Job Ref: **BRM08267** Scale @ A1: **1:500** Date Created: **Nov 16**

Drawing Number: **RPS-ST-XX-A-DR-6302** Status: **S0** Rev: **D5**

