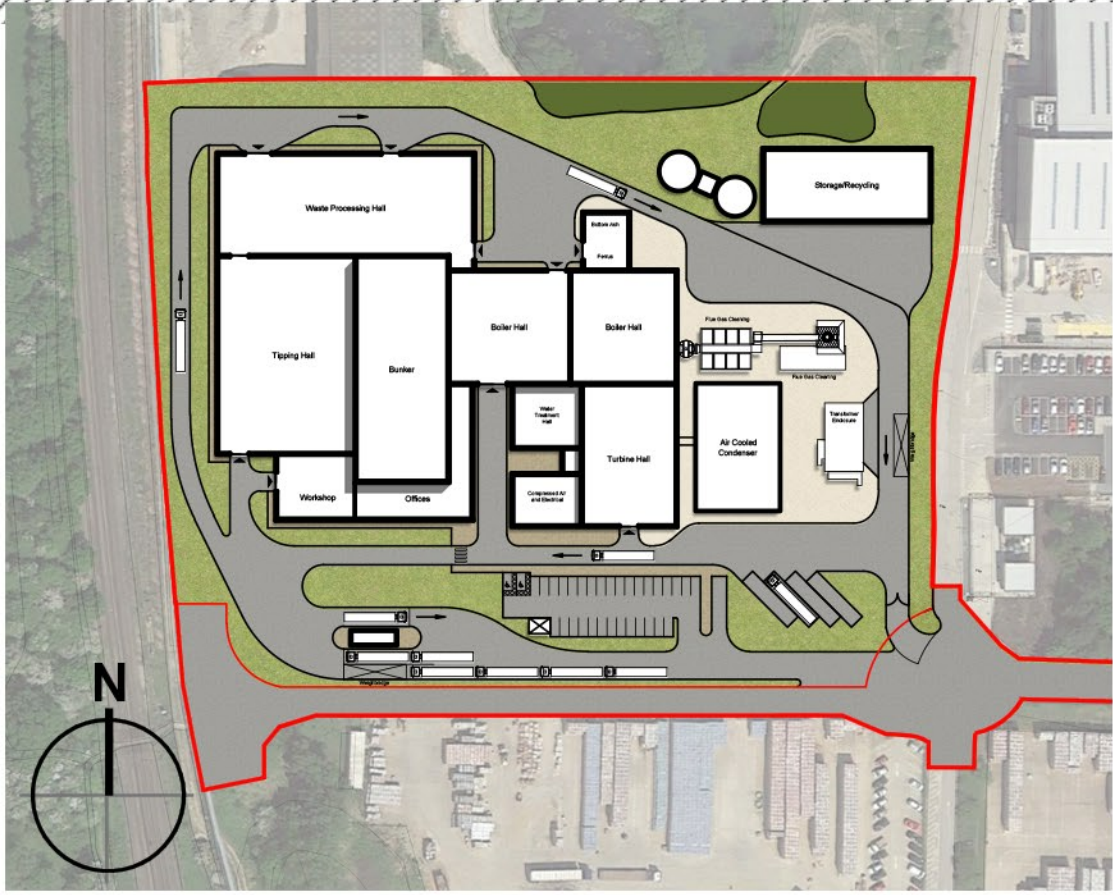
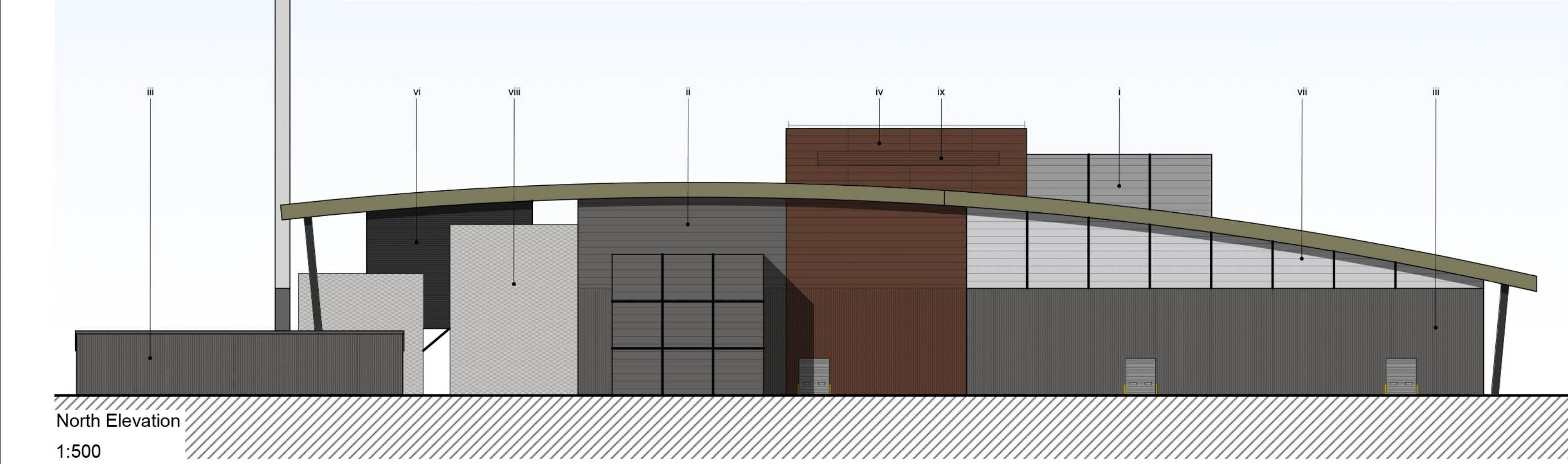
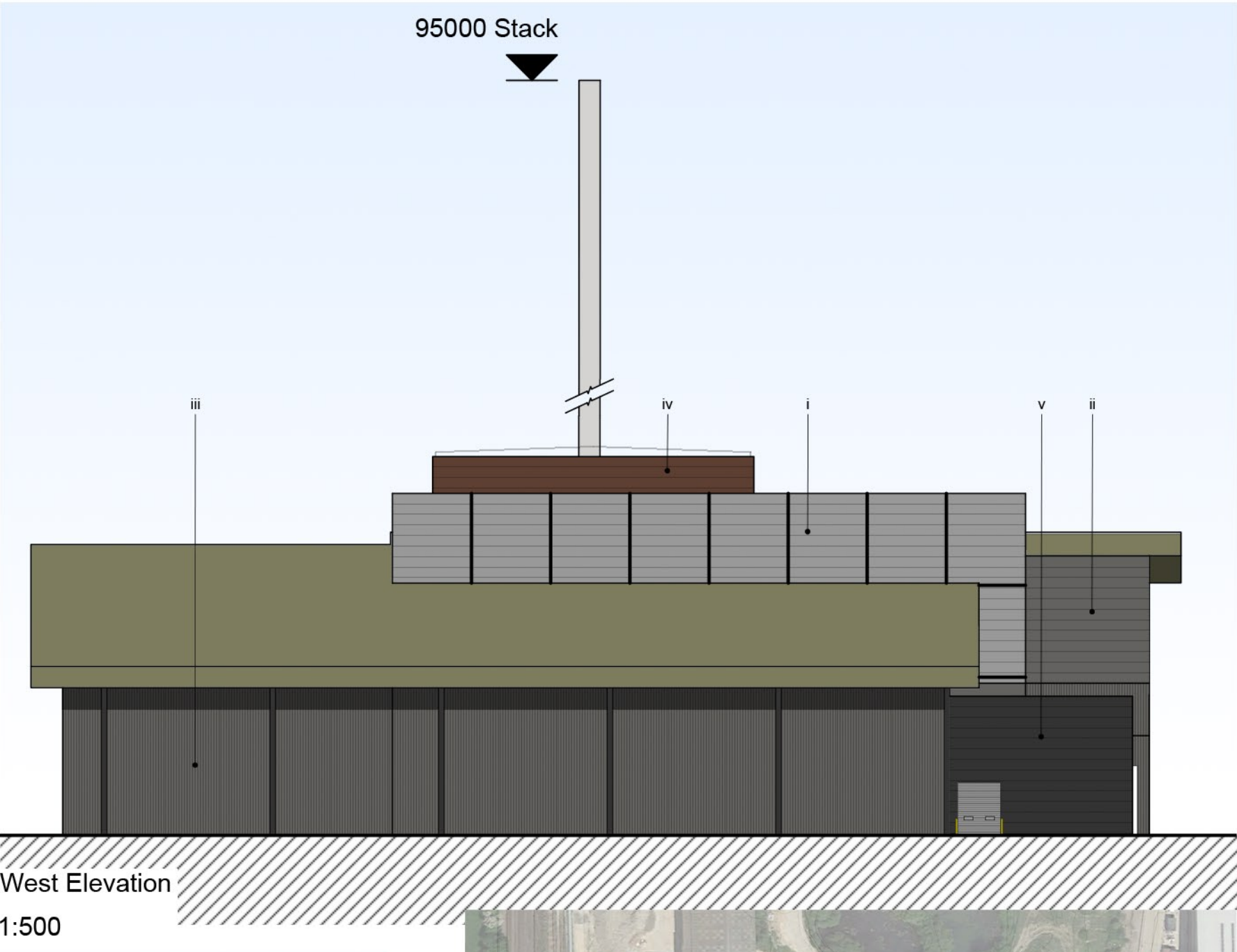
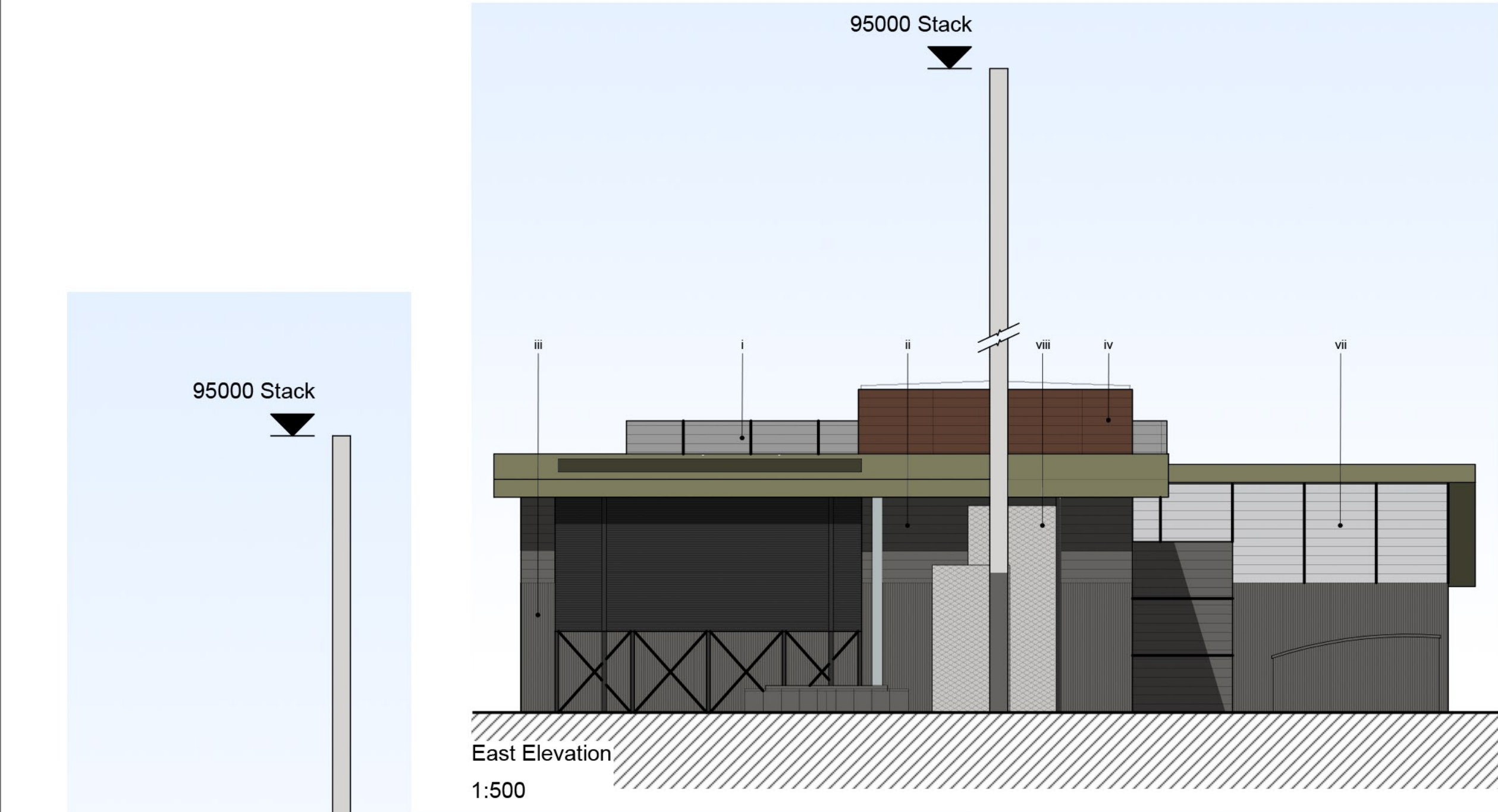


© 2018 RPS Group

Notes

1. This drawing has been prepared in accordance with the scope of RPS's appointment with its client and is subject to the terms and conditions of that appointment. RPS accepts no liability for any use of this document other than by its client and only for the purposes for which it was prepared and provided.
2. If received electronically it is the recipients responsibility to print to correct scale. Only written dimensions should be used.
3. This drawing should be read in conjunction with all other relevant drawings and specifications.



- External Materials Key:
- i. Horizontally laid composite microrib cladding panels colour 4000-N or similar approved
 - ii. Horizontally laid composite microrib cladding panels colour 7500-N or similar approved
 - iii. Vertically laid profiled cladding panels colour 7500-N or similar approved
 - iv. Horizontally laid composite microrib cladding panels colour 7010-G70Y or similar approved
 - v. Horizontally laid composite microrib cladding panels colour 7005-Y50R or similar approved
 - vi. Horizontally laid composite louvre cladding panels colour 7005-Y50R or similar approved
 - vii. Horizontally laid polycarbonate translucent panels colour 3000-N or similar approved
 - viii. Architectural mesh colour 3000-N or similar approved
 - ix. Louvre Polyester Powder Coated Colour 7010-G70Y or similar approved
- Flue Stack to be colour 2500-N with colour 7500-N base or similar approved
- All Dock doors, Level Access doors and Personnel doors to be colour 3000-N or similar approved
- Office Glazed doors, Curtain Walling and window frames to be PPC colour 7500-N or similar approved
- Roof to be colour 5010-G70Y or similar approved

Colours taken from the High Weald AONB Colour Study, Page 38

BRICK, STONE, TILE								STEEL							
4030-Y60R	7005-Y50R	4000-N	3500-N	7010-690Y	8010-Y90R	3000-N	2500-N								
5010-Y60R	6010-Y90R	4010-B50G	3005-Y50R	7010-Y70R	7020-Y50R	4010-G80Y	5010-Y90R								
6010-Y50R	6005-Y20R	3010-Y30R	4010-Y90R	7010-G50Y	8005-Y50R	5010-G70Y	4005-Y50R								
5000-N	6500-N	3010-B70G	3005-Y20R	7000-N	7500-N	5005-R50B	5005-Y50R								



Sherwood House, Sherwood Avenue,
Newark, Nottinghamshire, NG24 1QQ
T: 01636 605 700 E: rpsnewark@rpsgroup.com



Project Sussex EFW

Title Proposed Elevations

Status Preliminary Scale 1:250 @A1 Date Created 26/08/16
Project Leader RJF Drawn By JH Checked by RJF

Document Number				Revision	Subsidiary
NK018074 - RPS-MB-ZZ-A-DR-0111				P02	S0
Project Number	Originator	Zone	Level	Type	Role

