
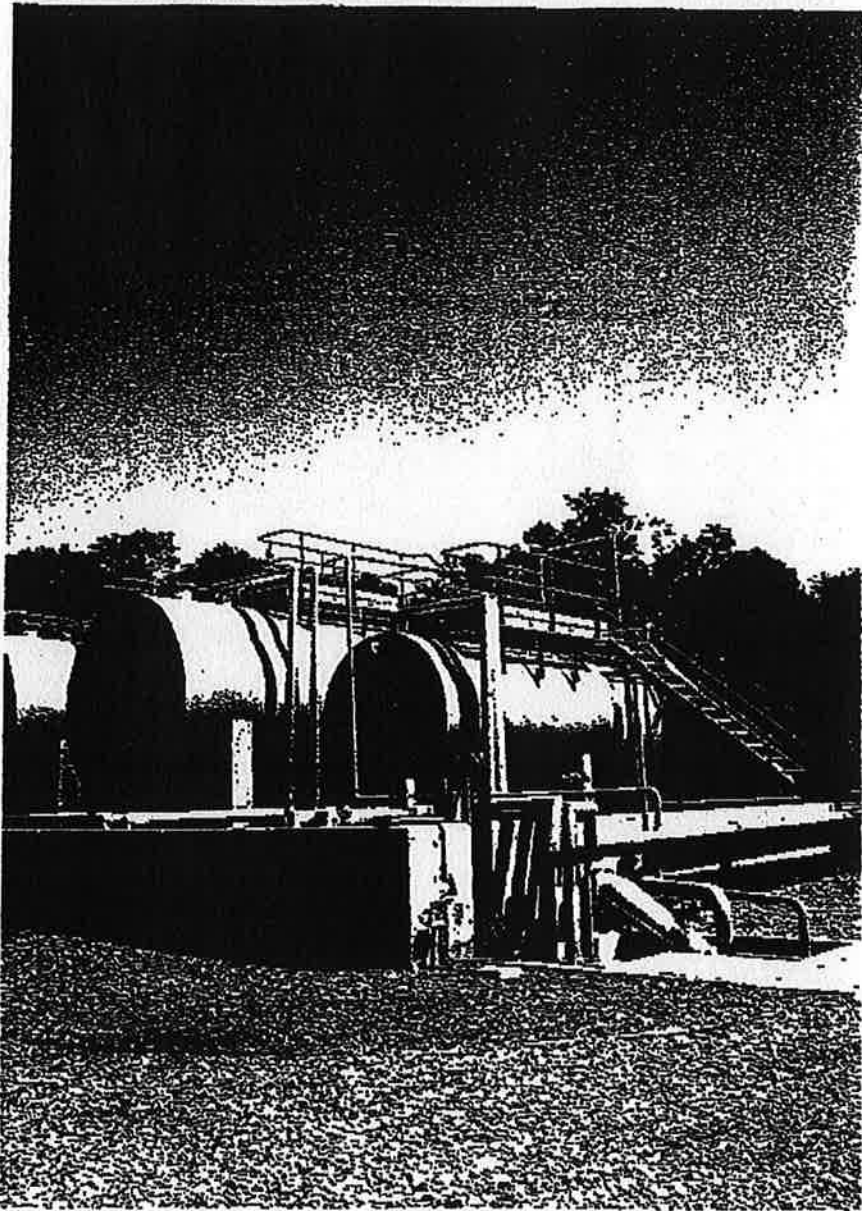
 <p>IGas Energy</p>	<p>Storrington Wellsite</p>	
---	------------------------------------	--

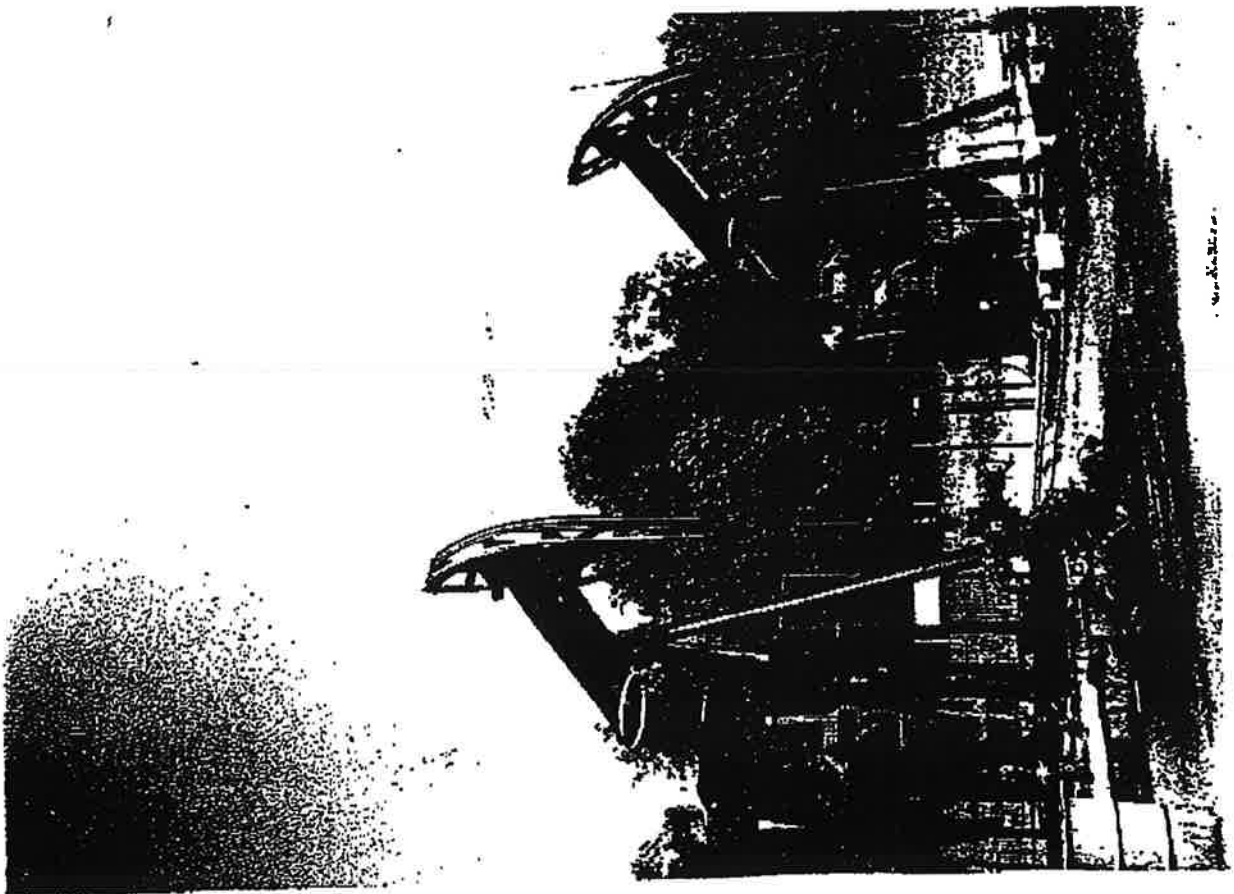
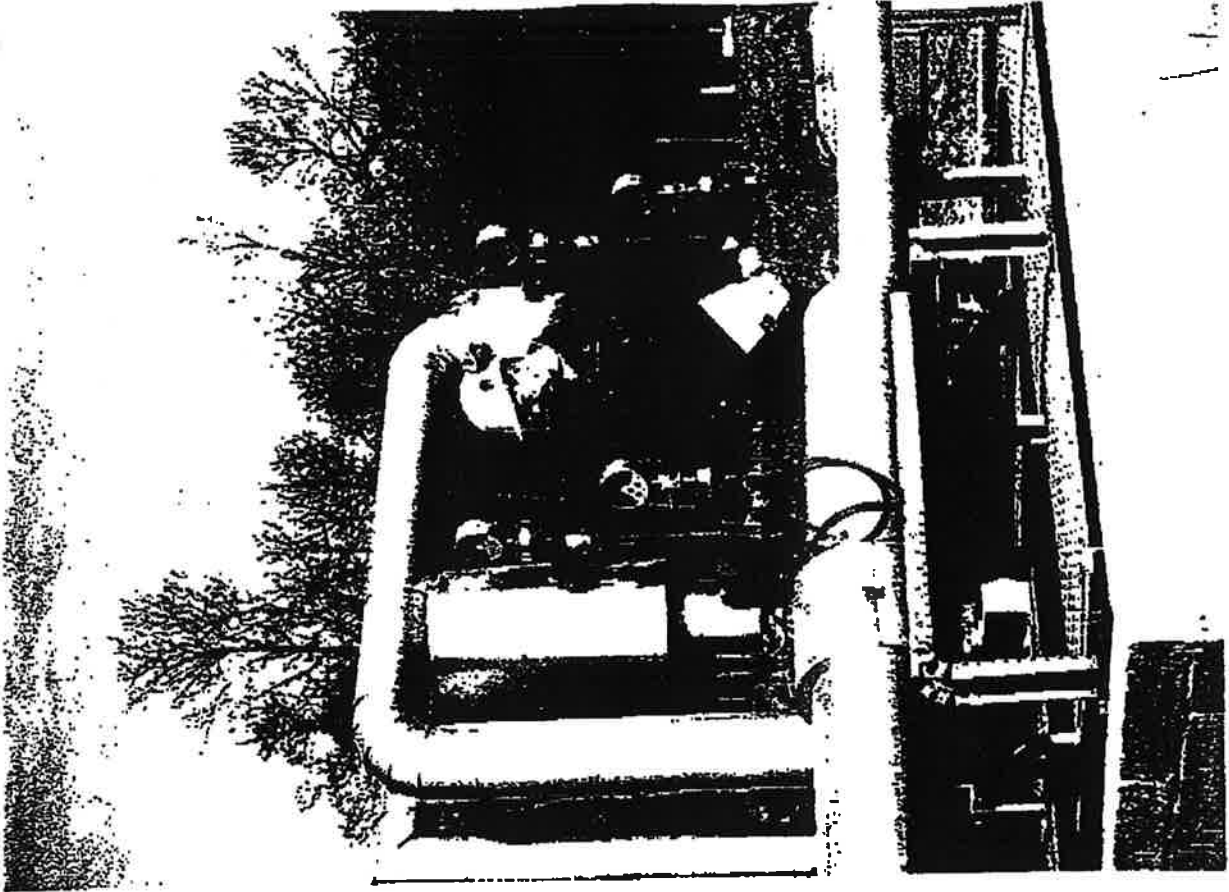
Appendix 3 – Elevations/Dimensions of Plant and Buildings


 <p>IGas Energy</p>	<p>Storrington Wellsite</p>	
---	------------------------------------	--

Appendix 3 - Original Fax of Plant and Equipment submitted and approved under SR/1/94 were in photographic format.




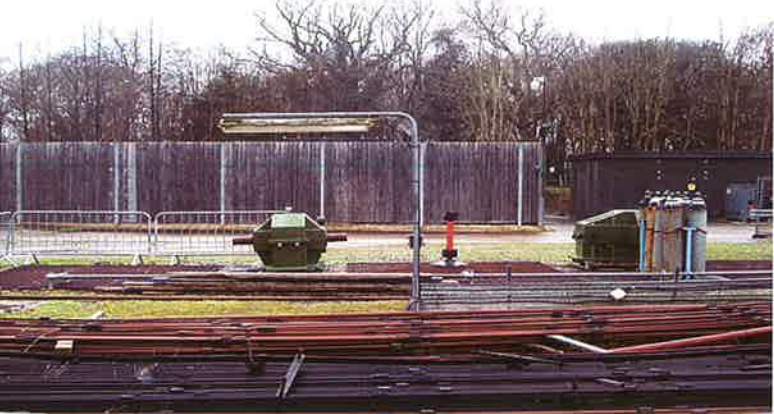
PHOTOGRAPHS OF
EQUIPMENT AS
SUBMITTED SR/1/94



 The logo for IGas Energy, featuring the text "IGas" in a bold, black, sans-serif font above the word "Energy" in a smaller, black, sans-serif font. To the right of the text is a stylized green graphic consisting of two overlapping triangles.	Storrington Wellsite	
---	-----------------------------	--

**Appendix 3- Dimension and Photographic Schedule of Storrington wellsite -
Plant and Equipment**

Dimension and Photographic Schedule of Storrington wellsite - Plant and Equipment

Photograph	Equipment/Plant	Dimensions (meters)
	Flare	5m (h) x 3m diameter
	Lights	Generally 2m high columns or monted on equipment



Heater

6.5m (h) x 7m (l)



Piping manifold

3m (h)



Separators

2m(m) x 3m(l)



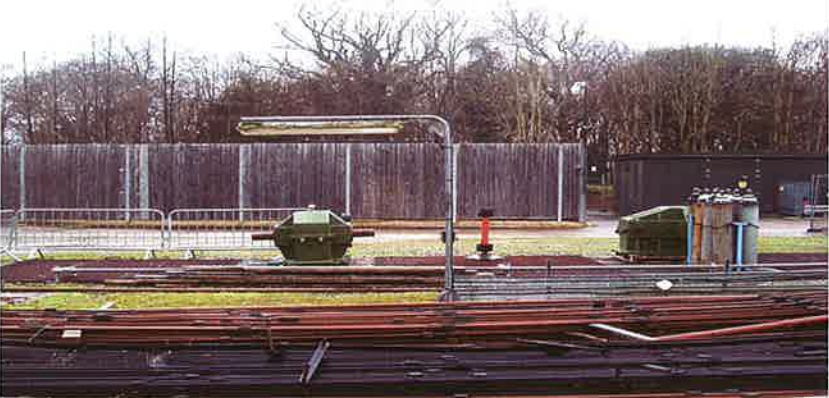


Oil/Water Tanks

5m (h)



Nodding Donkeys

6 m (h)

	<p>Fenced old generator area</p>	<p>3 m (h)</p>
	<p>Walkway over tanks</p>	<p>6m</p>
	<p>Site Office</p>	<p>3 m (h) x 8m (l) x 3m (w)</p>



Water tank

**2.5m (h) 11m
diameter**



Electricity station

**3.5m (h) x 3.5m
(l) x 3m (w)**