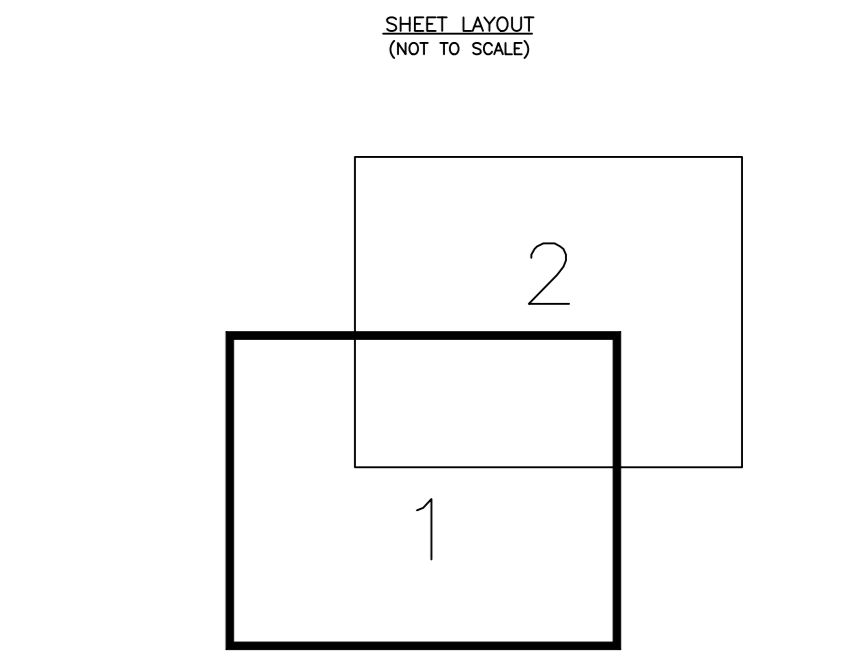


DATUM NOTES
 CO-ORDINATES USED ARE BASED ON ORDNANCE SURVEY NATIONAL GRID,
 DERIVED USING THE ACTIVE GPS NETWORK AND ADJUSTED TO A LOCAL
 GRID WITH A SCALE FACTOR OF 1.0000.
 LEVELS ARE RELATED TO - ORDNANCE SURVEY ACTIVE GPS NETWORK.

ABBREVIATIONS (where applicable)

(A) Assumed/Approximate	Oh	Overhead
A Arch In	Ph	Plating
AC Air-Con Unit	FB	Foot Box
AG Above Ground	FD	Ft. Depth
AI Air Valve	FE	Ft. Elevation
B Beam In	FL	Ft. Level
BL Backdrop Invert Level	FM	Parking Meter
BR Brick	F/S	Ft. Side Rail
BL Backdrop	PC	Site Change
BS Bus Stop	PT	Pit
BSU Beam Slope Up	P/W	Foot and Wire
BT British Telecom	RE	Reaching Eye
C/C	RET	Retaining
C/C	R/S	Root Sign
C/C	RSU	Rated Steel Joint
C/C	S	S
C/W	Sa	Survey Abandoned
C/W	SC	Stock at End
CL	SC	Structural Connection
CL	SC	Structural Connection
CL	SC	Structural Connection
CL	SC	Structural Connection
CL	SC	Structural Connection
CL	SC	Structural Connection
CL	SC	Structural Connection
CL	SC	Structural Connection
CL	SC	Structural Connection
CL	SC	Structural Connection

- NOTES**
- Drainage pipe sizes (where shown) have been gauged from the surface for safety reasons and should be reported as approximate only.
 - Tree species (where shown) should be treated with caution and expert identification is advised.
 - Although this is a digital survey the accuracy and amount of detail shown is only commensurate with the graphical scale of mapping as specified. Care should be exercised when working to larger scales.
 - Visible features in the vicinity of the boundaries as shown above, may not represent the extent of legally conveyed interests.
 - Whilst every effort has been made to achieve accuracy on this plan, CRUCIAL clearance dimensions, levels and invert levels should be checked prior to design and construction.
 - Kerb levels have been taken in the bottom of the channel.
 - All pipes are 1000 unless specified otherwise.



DOWNLANDS SCHOOL DALE AVENUE HASSOCKS BN6 8LP TOPOGRAPHICAL SURVEY

SURVEYED FOR: FAITHFUL + CLOUD
 11 BRISBANGEN PLACE
 WESTMINSTER
 LONDON
 SW1E 6BY

SURVEYOR: AR / DJ
 DATE: NOVEMBER 2022

NO. DATE REVISION NOTES

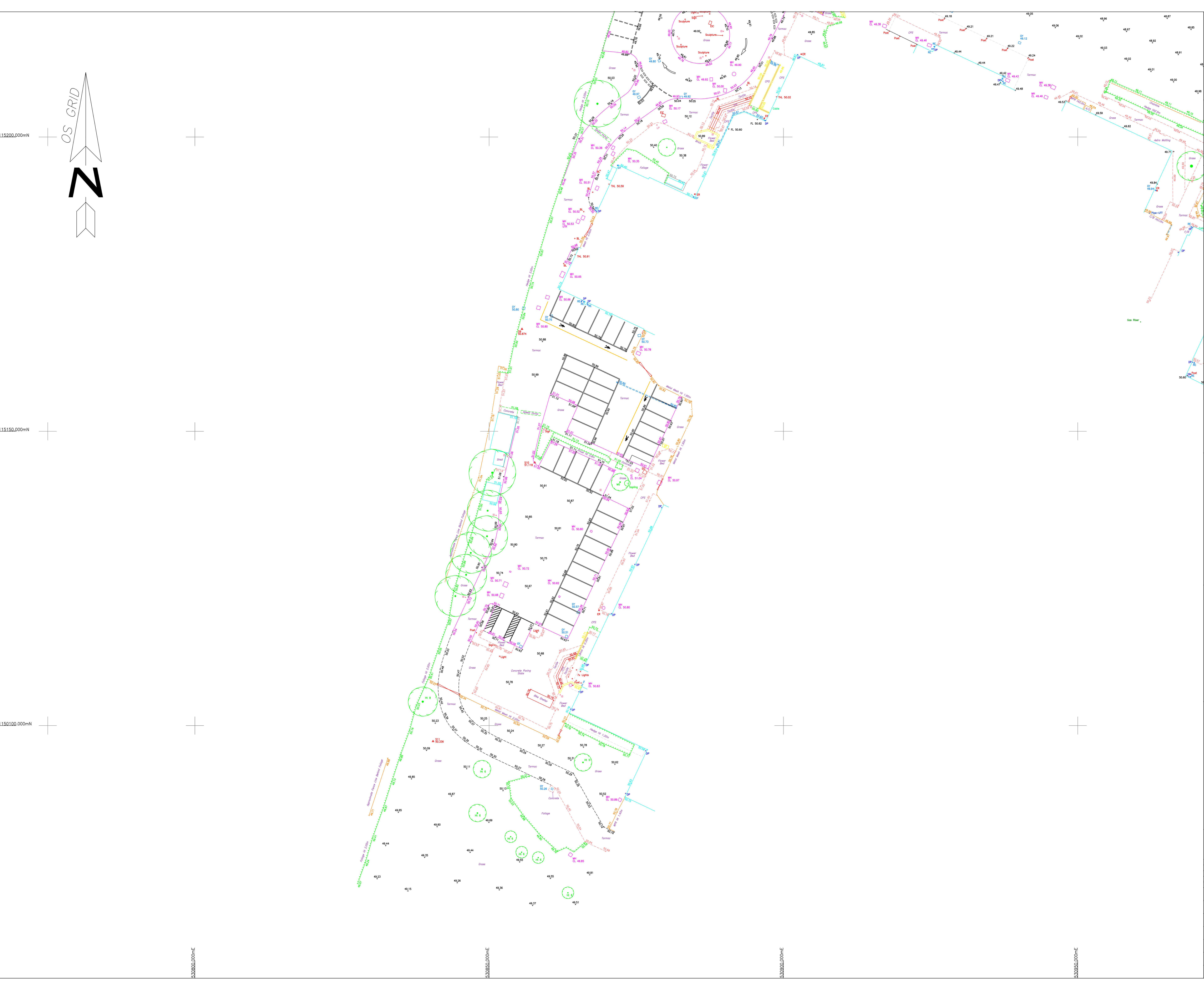
SHEET NUMBER N 1636/1 REVISION 0

DRAWING TITLE TOPOGRAPHICAL

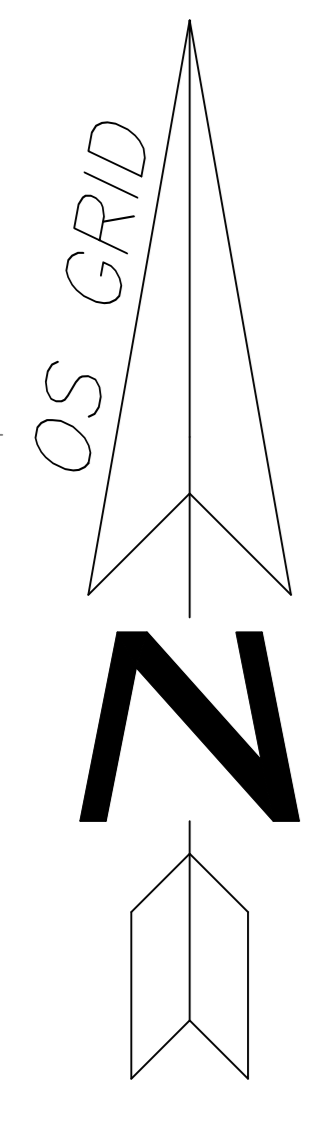
SCALE 1 : 200 (A0)

SEE ALSO DWG NOS

SHEET 1 of 2
 JOB NUMBER N 1636



115200.000mN
 115150.000mN
 115100.000mN



DATUM NOTES
CO-ORDINATES USED ARE BASED ON ORDNANCE SURVEY NATIONAL GRID. DRAWDING SHOWS THE ACTIVE GPS NETWORK AND ADJUSTED TO A LOCAL GRID WITH A SCALE FACTOR OF 1.0000.
LEVELS ARE RELATED TO - ORDNANCE SURVEY ACTIVE GPS NETWORK.

SURVEY CONTROL STATIONS SHOWN

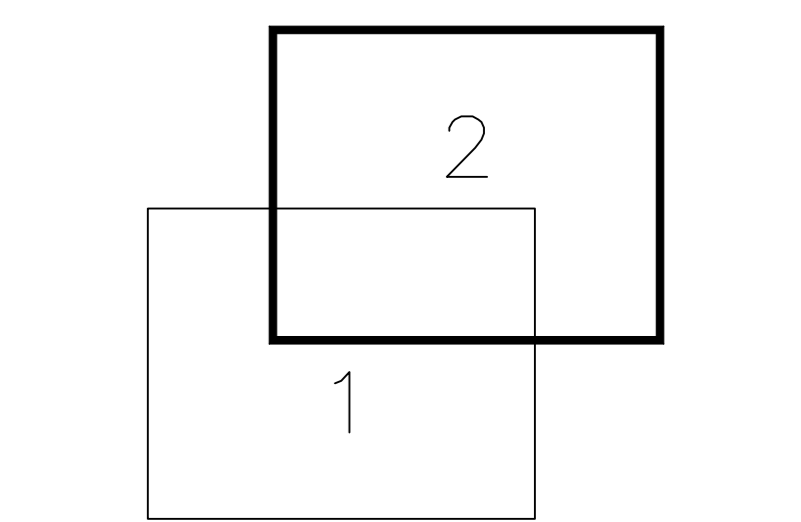
ABBREVIATIONS (where applicable)

(A) Assumed/Approximate	OH Overhead
A Arch in	PH Paving
AC Air-Con Unit	PB Post Box
AG Above Ground	PI Pit Inset
AV Air Valve	PE Pipe
B Beam in	PL Pit Level
BL Backstop Invert Level	PM Parking Meter
BR Brick	P/S Flat and Rail
BU Buffer	PSD Size Change
BS Bus Stop	PT Post
BSU Beam Sledge Up	P/W Foot and Wire
BT British Telecom	RE Reading Eye
C Ceiling in	RET Retaining
C/S Clay Squerred	RS Roof Sign
C/W Cover Level	RSU Railed Steel Joint
CKK Choke	S Sill
CL Connection	S&C Survey Abstract
CO Conduit	SD -Block at End
CON Concrete	SD -Structural Connection
COP Coping	SD -Slope Annotated
CPS Concrete Paving Slabs	SD -Slope Annotated
CSU Calling Sledge Up	SD -Joint Displaced
CV Cable Television	SD -Loss of Footing
CW Concrete Wall	SD -Obstruction
DC Drainage Channel	SD -Sloping Limit
D Door in	SD -Small Diameter Pipe
D Door in	SD -Camera Stuck
DP Drain Pipe	SD -Shower Stop
EP Electricity Pole	S/C Surcharged
ER Existing Road	SD St. Depth
FC False Ceiling in	SK Sockway
FB Fiver Bed	SL Sign Level
FE Fence	SP Spring in
FM Fire Hydrant	SPT Septic Tank
FL Floor Level	ST St. Top
FP Fire Pipe	SK Storm Drain
FW Fuel Water	SVC Security Video Camera
GP Gas Post	SK Stop Sign
GV Gas Valve	TGB Telephone Call Box
GZ Gully	TLS Trench Level
H Hand in	TL Traffic Light
HL High Level Inset	TL Trap
HT Height	TP Telegraph Pole
I Inspection Cover	TRU Tru
IN Inset Level	UC Underground
INT Interceptor	U/C Unable to Connect
J Iron Rod	U -No Access
J Junction	U -No Access
JW Junction	U -No Access
K Kerb	U -Flow Meter Level
L Lamp in	U -No Access
LP Lamp Post	U -Surcharged
MC Material Change	U -Unable to Truss Further
MG Walk Grft Tree	U/L Unable to Locate
M Manhole Cover	U/R Unable to Rise
M Manhole	U/LT Unable to Truss
MP No Steps Possible	U/W Not Found
NV No Pipes Visible	W Water Level
NVP No Other Pipes Visible	WW Water Meter
NV No Vase Visible	WO Wash Out

NOTES

- Drainage pipe sizes (where shown) have been gauged from the surface for safety reasons and should be reported as approximate only.
- Tree species (where shown) should be treated with caution and expert identification is advised.
- Although this is a digital survey the accuracy and amount of detail shown is only commensurate with the graphical scale of mapping as specified. Care should be exercised when working to larger scales.
- Visible features in the vicinity of the boundaries as shown above, may not represent the extent of legally conveyed easements.
- Whilst every effort has been made to achieve accuracy on this plan, CRITICAL clearance dimensions, levels and invert levels should be checked prior to design and construction.
- Kerb levels have been taken in the bottom of the channel.
- All pipes are 1000 unless specified otherwise.

SHEET LAYOUT (NOT TO SCALE)



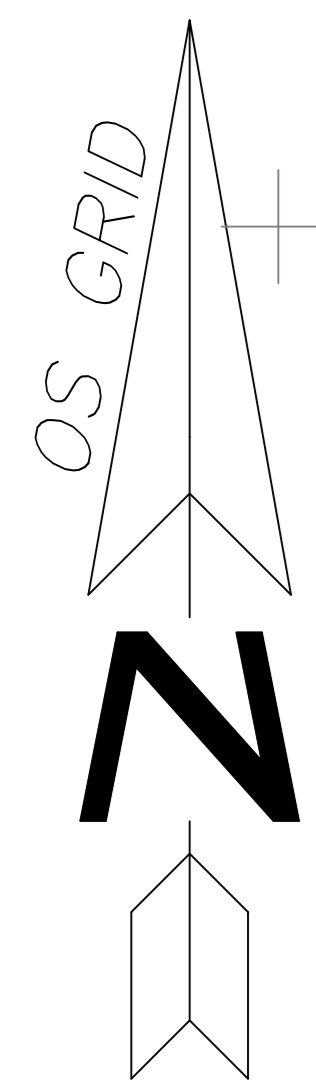
DOWNLANDS SCHOOL
DALE AVENUE
HASSOCKS
BN6 8LP
TOPOGRAPHICAL SURVEY

SURVEYED FOR: FATHFUL + GOULD
11 BRIDGESDEN PLACE
WESTMINSTER
LONDON
SW1E 8BY

SURVEYOR: AR / DJ
DATE: NOVEMBER 2022

NO DATE REVISION NOTES

SHEET NUMBER	N 1636/2	REVISION 0
DRAWING TITLE	TOPOGRAPHICAL	
SCALE	1 : 200 (A0)	
SEE ALSO DWG NOS		
SHEET	2 of 2	
JOB NUMBER	N 1636	



115300.000mN

115250.000mN

115200.000mN

530850.000mE

530900.000mE

530950.000mE

531000.000mE

