

From: [Jill Sutcliffe](#)
To: [PL Planning Applications](#)
Subject: Re: Comments acknowledgement for WSCC/030/21
Date: 12 October 2021 16:32:35
Attachments: [Loxwood Parish Eco-Networks Map.pdf](#)

REF: Application number: WSCC/030/21

Site: Pallinghurst Woods, Loxwood Road, Loxwood, West Sussex RH14 0RW

And, the more detailed map supplied by CDC today - their :Loxwood Parish Eco-Habitats map. Many thanks.

Jill Sutcliffe,
Parishes Wildlife Group

On Tue, 12 Oct 2021 at 16:23, <planning.applications@westsussex.gov.uk> wrote:

Thank you for submitting comments online for the following planning application:

Application number: WSCC/030/21

Site: Pallinghurst Woods, Loxwood Road, Loxwood, West Sussex RH14 0RW

Proposal: An application for planning permission for a clay quarry and construction materials recycling facility (CMRF) for CD&E wastes including the use of an existing access from Loxwood Road, the extraction and exportation of clay and restoration using suitable recovered materials from the CMRF to nature conservation interest including woodland, waterbodies and wetland habitats

Your comments:

This is an Appendix to the submission already made by the Parishes Wildlife Group submitted on August 30th via Chris Bartlett as the planning portal stated it was not taking any submissions at 10.45 am and yet the deadline was cited as August 30th without specifying a time limit.

CDC staff were able to respond to my request for a Green Infrastructure map for the Parish of Loxwood when they returned to their desks in view of the pandemic and I received this today. . Its omission and the fact that I had been promised it are referred to in the evidence presented in the PWG objection. What the map demonstrates is the connectivity of the Pallinghurst woods site, the adjacent Ancient Woodland and the existence of bat habitat. The ecological report presented as part of the application by Protreat referred to Barbastelle Bat but not to its status as a European Protected Species which requires an HRA which was not presented. These are rare bats and subject to the highest protection. These bats do not tolerate artificial light, disturbance or interference with the habitat they use for foraging, commuting and living.

You can keep up to date on this planning application online at:

<https://westsussex.planning-register.co.uk/Planning/Display/WSCC/030/21>

All comments will be made available for public inspection on the website and at County Hall in Chichester. Phone numbers, signatures, and email addresses will be hidden. Do not include any personal information that you would not wish to be publicly available.

All planning-related matters raised in your representation will be given careful consideration before the application is determined. Individual replies to points or questions raised cannot be provided.

The majority of applications are determined by officers under delegated powers. Only large-scale and/or particularly controversial proposals are determined by the Planning Committee. In the latter case, if you have made a representation you will be advised of the details of the Committee, where the report can be viewed online, and how you can ask to speak at the Committee meeting.

If you have any queries, please email planning.applications@westsussex.gov.uk or telephone 01243 642118.

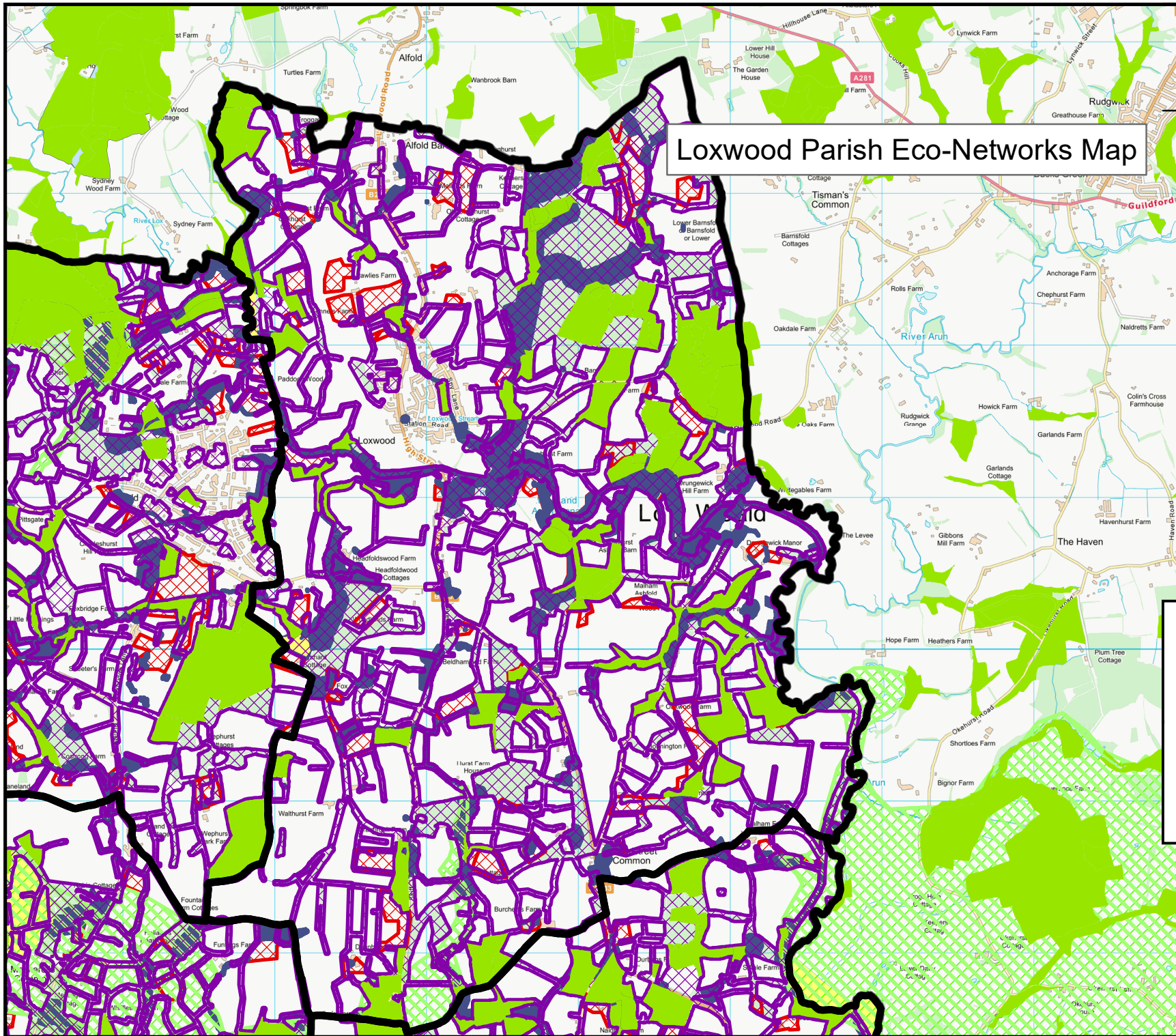
For general information about planning, visit our website at www.westsussex.gov.uk/planning.

LEGAL DISCLAIMER

This email and any attachments are confidential and intended solely for the persons addressed. If it has come to you in error please reply to advise us but you should not read it, copy it, show it to anyone else nor make any other use of its content. West Sussex County Council takes steps to ensure emails and attachments are virus-free but you should carry out your own checks before opening any attachment.



Loxwood Parish Eco-Networks Map



Legend

- Site of Special Scientific Interest (SSSI)
- Local Wildlife Site (SNCI)
- Special Protection Area
- Ancient Woodland
- Barn Owl Habitat
- Wetland Network
- Bat Network
- Biodiversity Opportunity Area

1:34,000

Date: 12/10/2021

