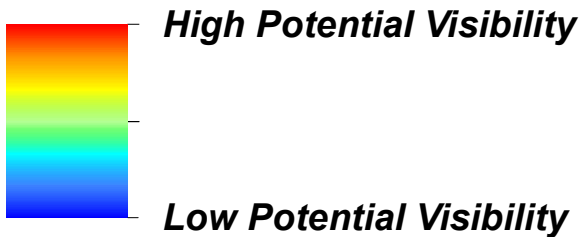
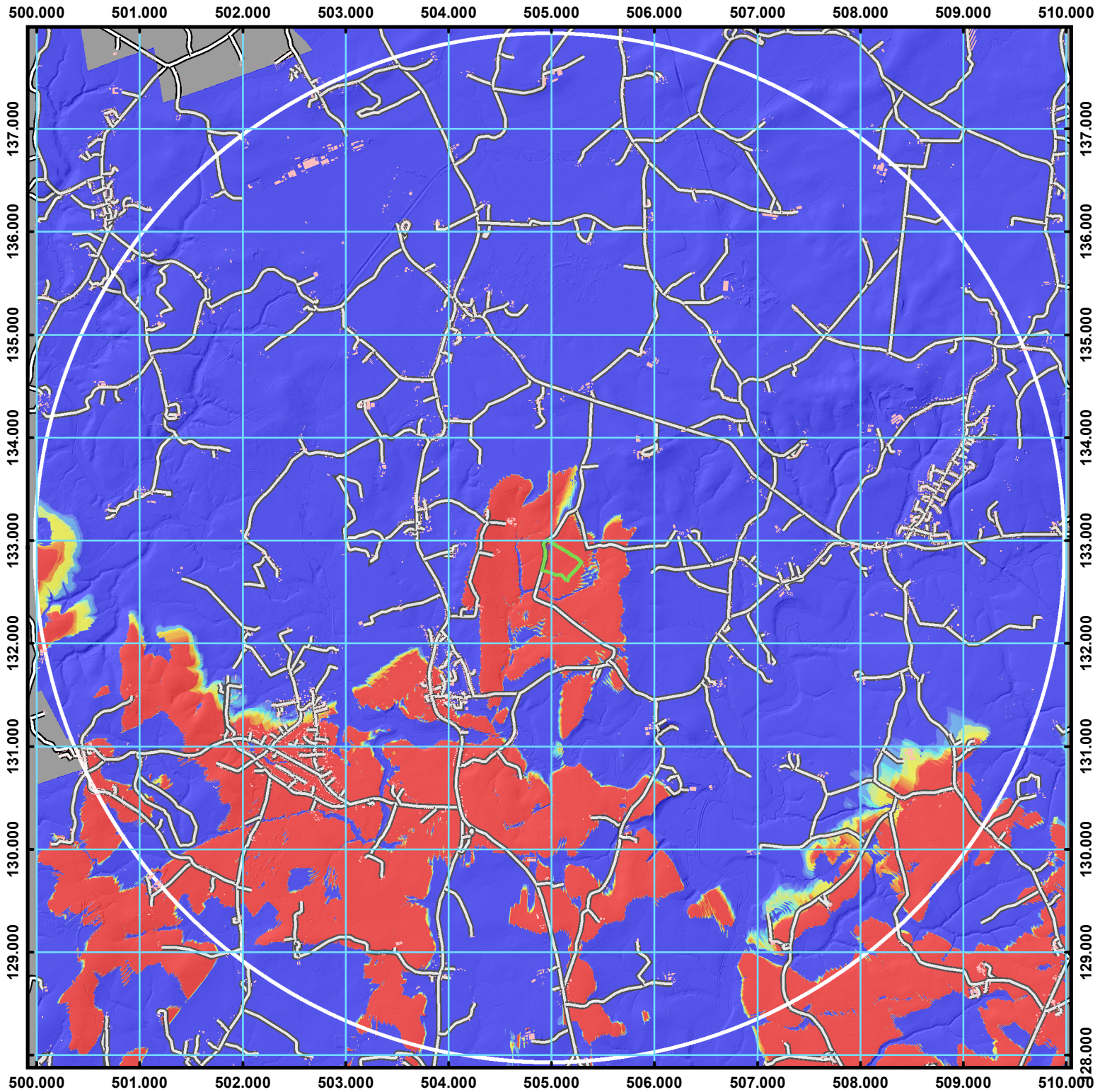


FIGURE ES 3 - ZVIs

*Zone of Theoretical Visibility for  
LOXWOOD CLAY PITS  
West Sussex*



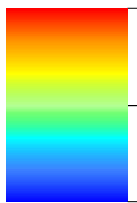
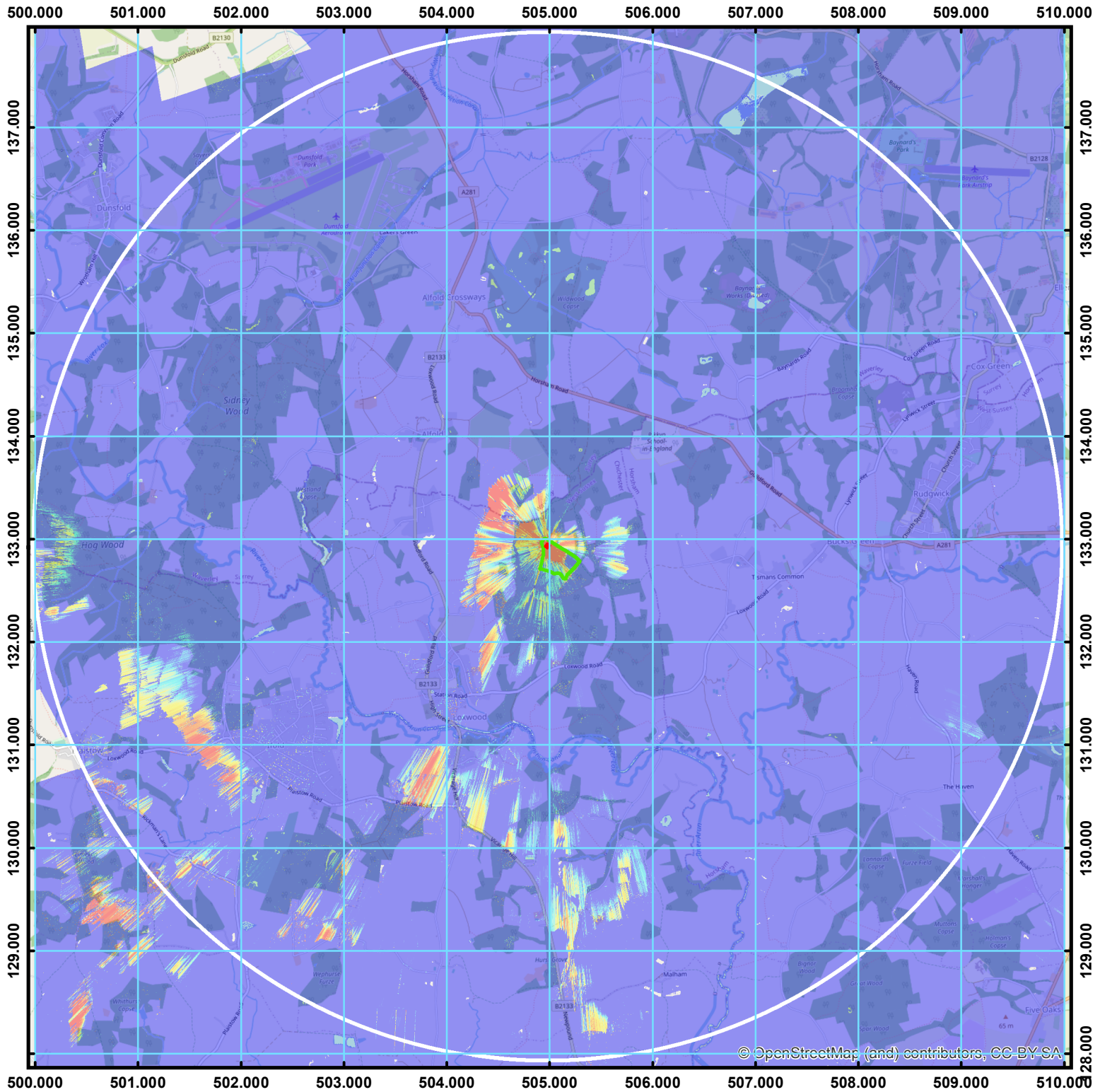
1:52,000



Reference System: OSGB 1936 British National Grid

*This ZTV does not take account of intervening vegetation or buildings and has been prepared using GIS software and Ordnance Survey data.*

# Zone of Theoretical Visibility for Land at Loxwood Clay Pits West Sussex



**High Potential Visibility**

**Low Potential Visibility**

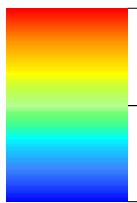
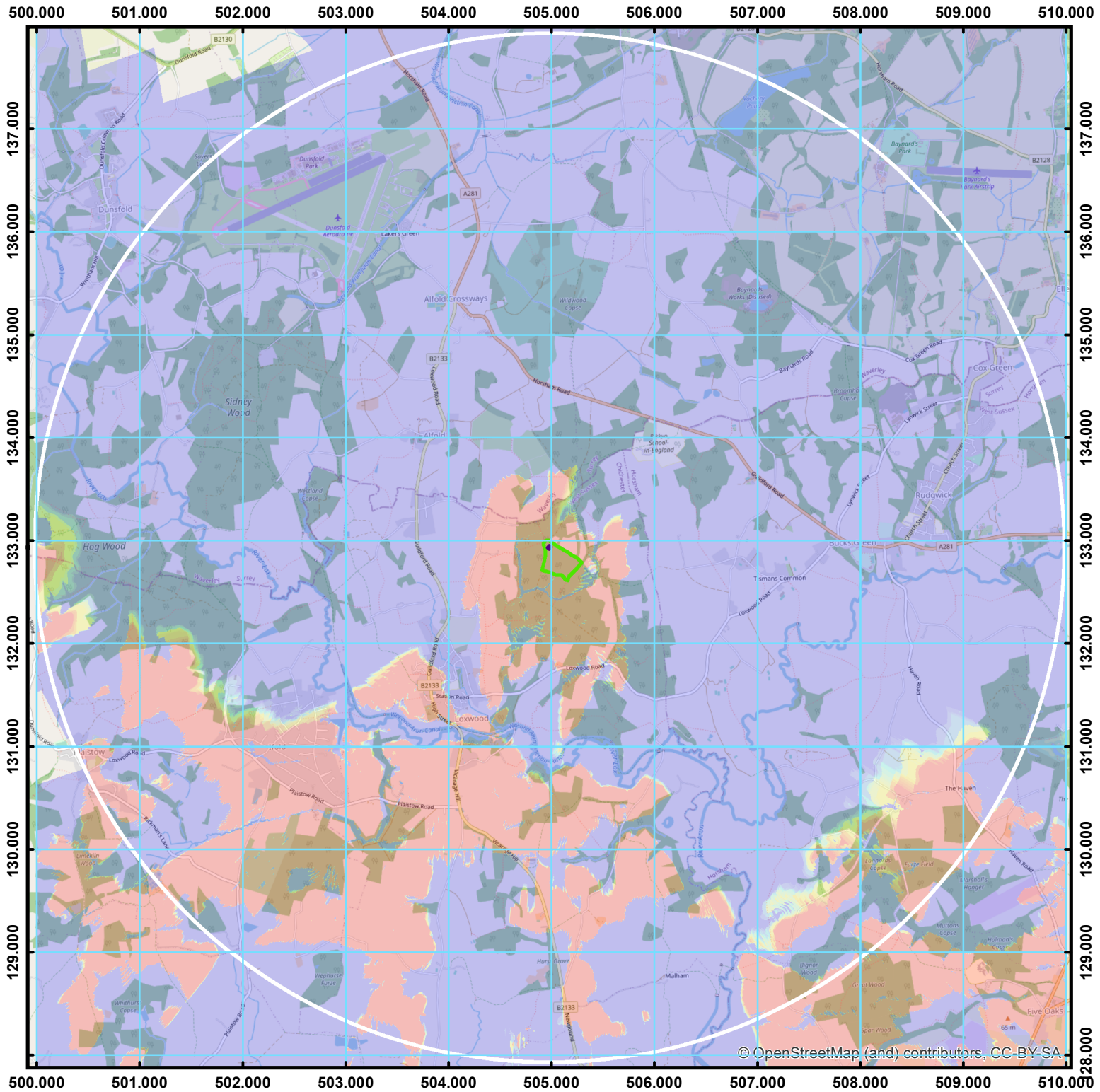
1:52,000



Reference System: OSGB 1936 British National Grid

This ZTV take account of intervening vegetation and buildings detected by LIDAR Digital Surface Model and has been prepared using GIS software and Ordnance Survey data.

# Zone of Theoretical Visibility for LOXWOOD CLAY PITS West Sussex



**High Potential Visibility**

1:52,000



**Low Potential Visibility**

Reference System: OSGB 1936 British National Grid

This ZTV does not take account of intervening vegetation or buildings and has been prepared using GIS software and Ordnance Survey data.

© OpenStreetMap (and) contributors, CC-BY-SA