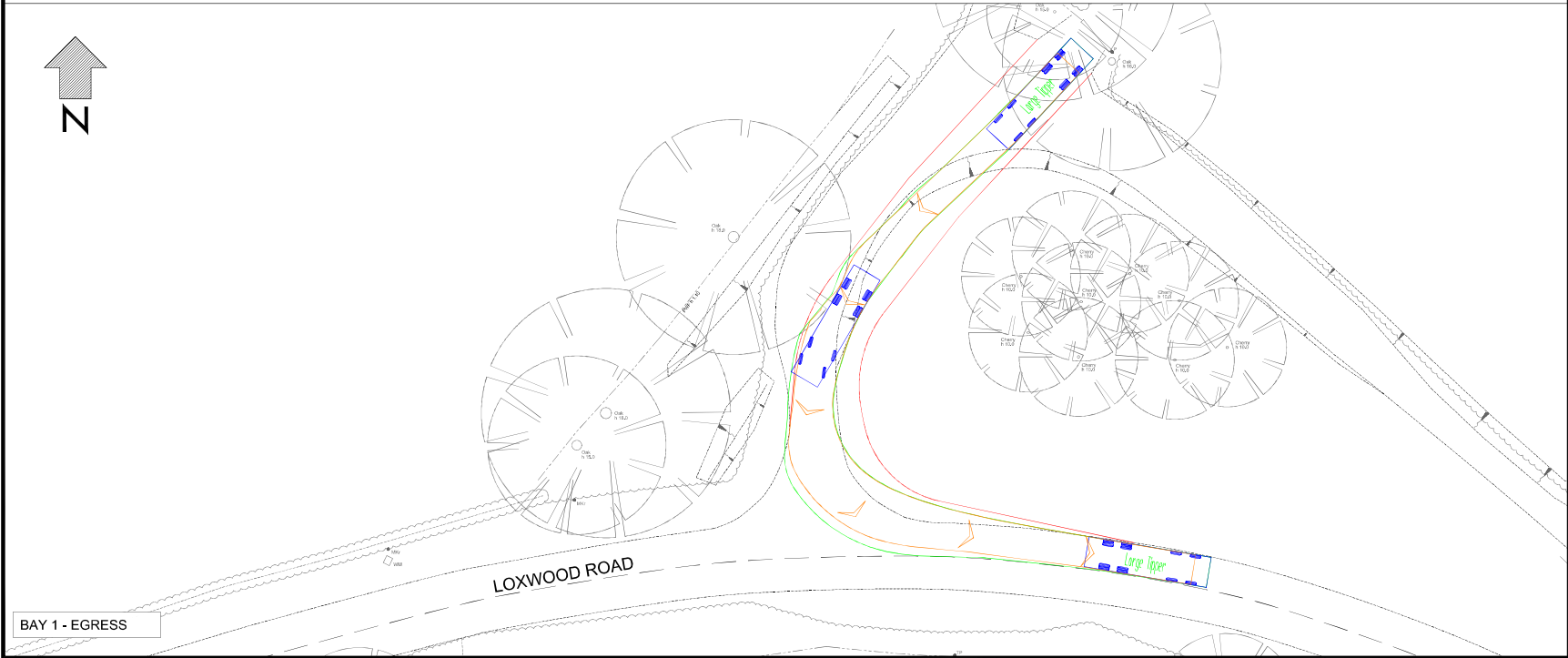
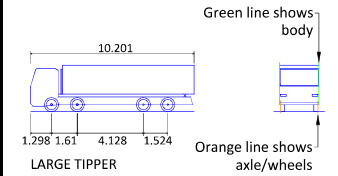


BAY 1 - ACCESS



BAY 1 - EGRESS

VEHICLE DETAILS:



LARGE TIPPER
 Overall Length 10.201m
 Overall Width 2.495m
 Overall Body Height 2.890m
 Min Body Ground Clearance 0.341m
 Track Width 2.471m
 Lock-to-lock time 6.00s
 Curb to Curb Turning Radius 11.550m

Design speed 5kph for all Forward movements
 Design speed 2.5kph for all Reverse movements

Client



Project

LOXWOOD ROAD

Drawing Title

SWEPT PATH ANALYSIS USING A
 4 AXLES RIGID TIPPER

Drawing Status

FOR PLANNING

Drawn	Designed	Date	Scale	Size
	NC	MAR 2021	1:200	A1

Drawing No.	Rev
NJC-002	-