

WEST SUSSEX

A Summary of Mineral Resource Information for Development Plans

Mineral Resources

Scale 1:100 000

Compiled by P.M. Hopson, D.J. Harrison, S. Holloway and D.E. Highley
Project Leader: D.E. Highley
Planning Consultant: J.F. Cowley, Mineral and Resource Planning Associates.
Digital cartography by C. Simpson, British Geological Survey, Keyworth.

Production of this map was commissioned and funded by the Department of the Environment, Transport and the Regions (Contract MP0624).

Topography based on the Ordnance Survey 1:100 000 scale County maps.
© Crown Copyright 1987
Ordnance Survey licence number GD272191/1997

Digital SSSI and NNR boundaries © English Nature 1996

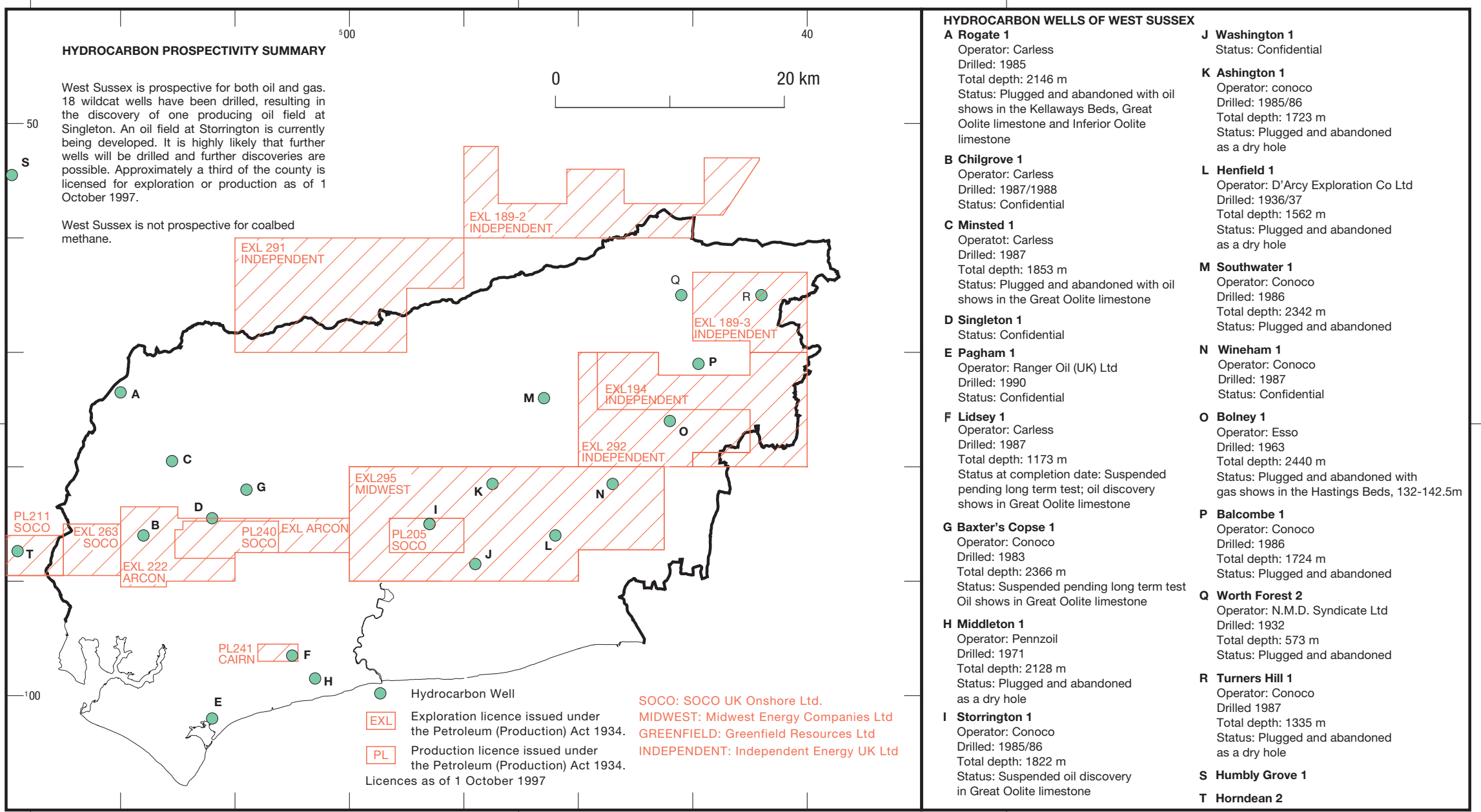
Positions of Scheduled Monuments at 31st March 1994 as supplied by English Heritage. The majority of monuments are plotted using a centred NGR symbol. Consequently the actual area and/or length of a monument protected by the legal constraints of scheduling cannot be represented here. Monuments scheduled since that date are not accounted for.

Digital AONB boundaries © Countryside Commission 1986

© Crown Copyright 1998
Copyright in the typographical arrangement and design vests in the Crown.

Published for the Department of the Environment, Transport and the Regions under licence from the Controller of Her Majesty's Stationery Office.

Applications for reproduction should be made to The Copyright Unit, Office of Public Services, Her Majesty's Stationery Office, St Clements House, 1-16 Colegate, Norwich NR3 1BQ.



AIMS AND LIMITATIONS

The purpose of the maps and associated reports in this series is to show the broad distribution of those mineral resources which may be of current or potential economic interest and to relate these to selected nationally-recognised planning designations. The maps are intended to assist in the consideration and preparation of development plan policies in respect of mineral extraction and the protection of important mineral resources against identification. They bring together a wide range of information, much of which is scattered and not always available in a convenient form.

The maps have been produced by collation and interpretation of mineral resource data principally held by the British Geological Survey. Information on the extent of mineral planning permissions has been obtained from the relevant Mineral Planning Authority (MPA). Some of these permissions may have lapsed or expired. The status of individual areas can be ascertained from the appropriate MPA. Location information on national planning designations has been obtained from the appropriate statutory body (Countryside Commission, English Nature and English Heritage). For further information the relevant body should be contacted.

The mineral resource data presented are based on the best available information, but are not comprehensive and their quality is variable. The inferred boundaries shown are, therefore, approximate. Mineral resources defined on the map delineate areas within which potentially workable minerals may occur. These areas are not of uniform potential and also take no account of planning constraints that may limit their working. The economic potential of specific sites can only be proved by a detailed evaluation programme. Such an investigation is an essential precursor to submitting a planning application for mineral working. Extensive areas are shown as having no mineral resource potential, but some isolated mineral workings may occur in these areas. The presence of these operations generally reflect very local or specific situations which are referred to in the accompanying report.

The maps are intended for general consideration of mineral issues and not as a source of detailed information on specific sites. The maps should not be used to determine individual planning applications or in taking other decisions on the acquisition or use of a particular piece of land, although they may give useful background information which sets a specific proposal within context.

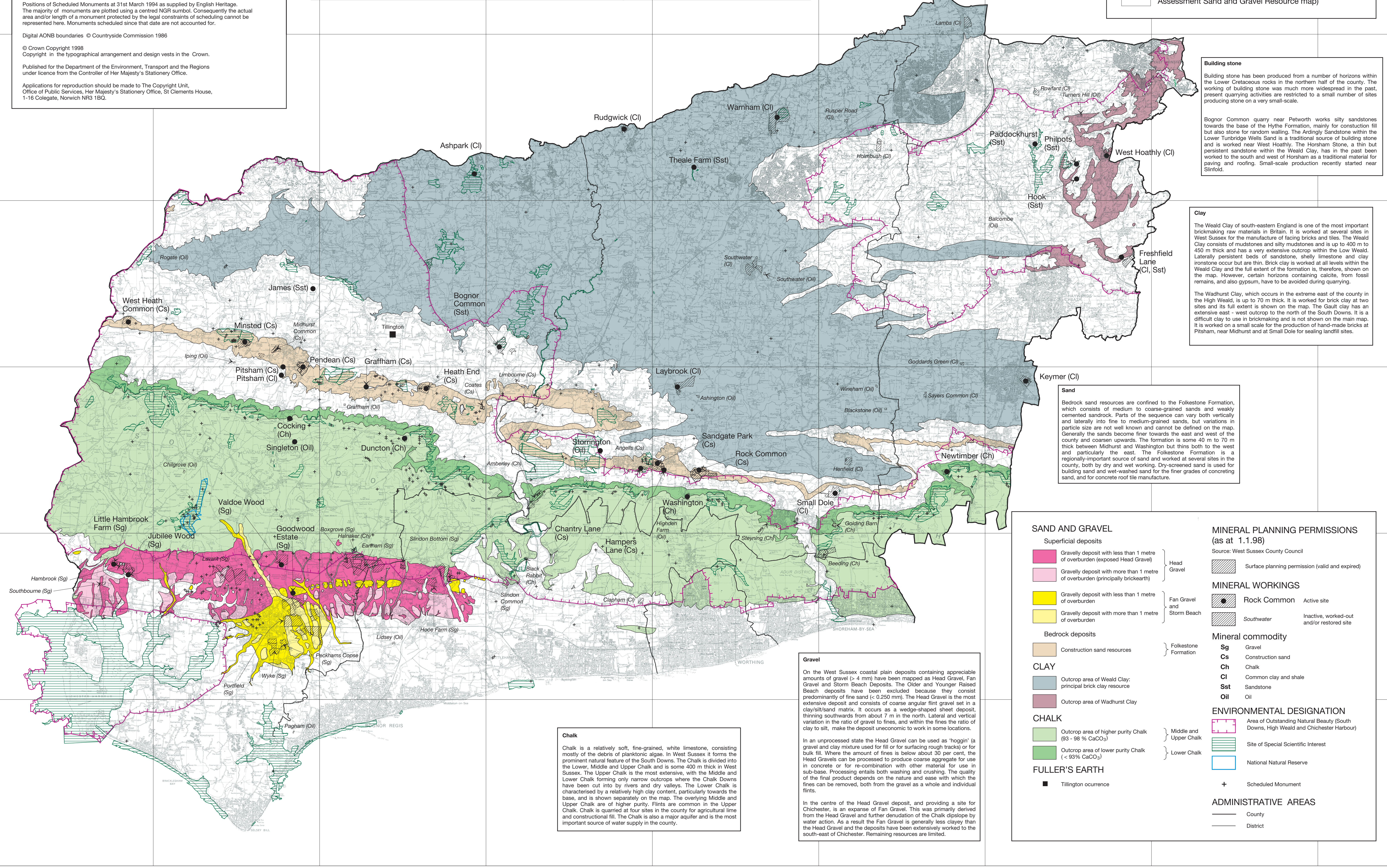
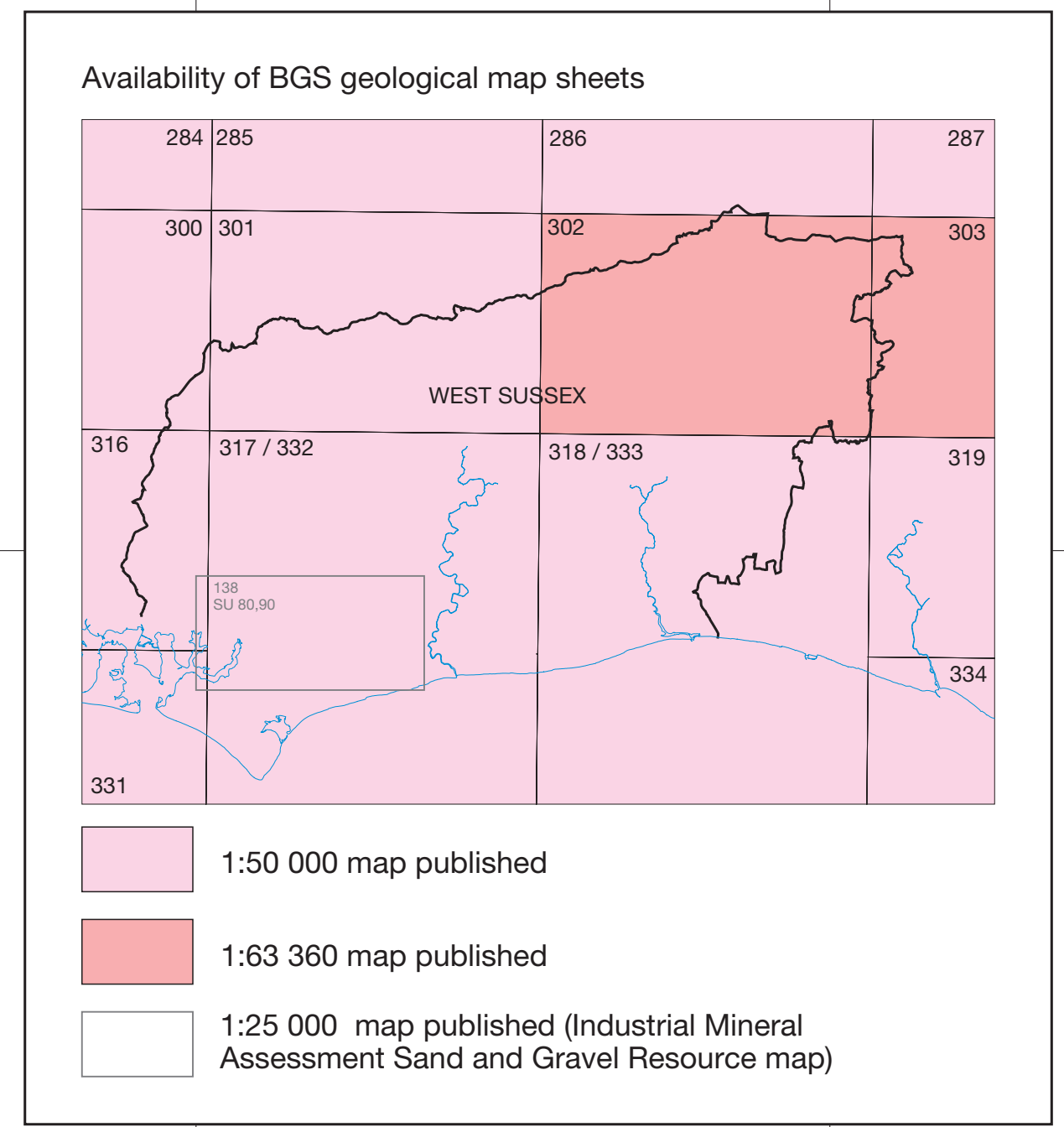


Figure A1 West Sussex Resources map (published 1998)