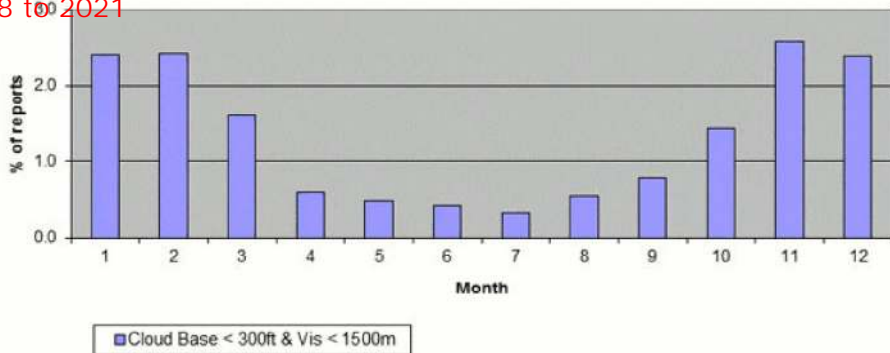
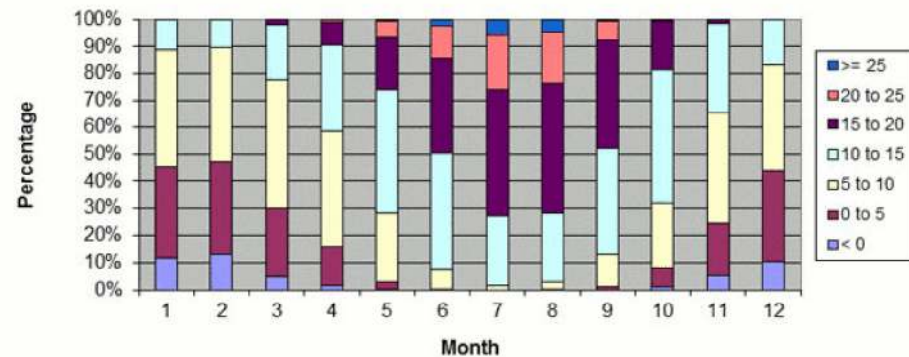


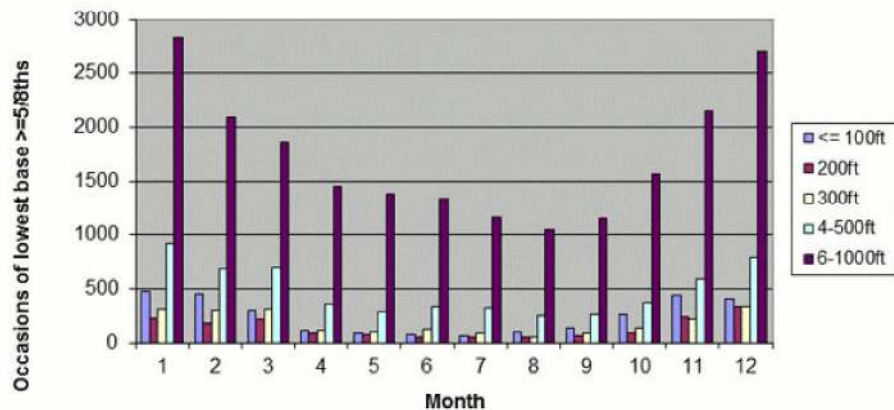
Reported Occurrences of LVPs (1983 to 2012)



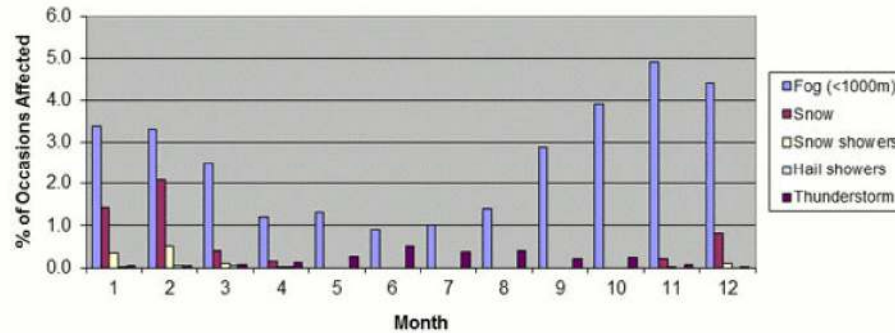
Temperature Chart (°C) - 1983 to 2012



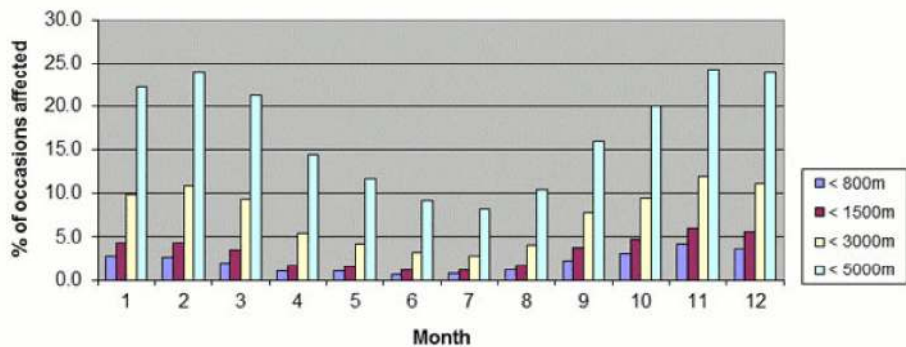
Cloud Base Occurrence Chart (1983 to 2012)



Weather Percentage Chart (1983 to 2012)

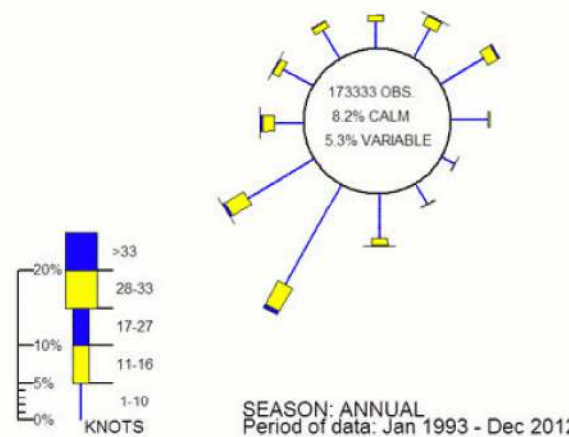


Visibility Percentage Chart (1983 to 2012)



WIND ROSE FOR GATWICK  
N.G.R: 5265E 1407N

ALTITUDE: 59 metres a.m.s.l.



SEASON: ANNUAL  
Period of data: Jan 1993 - Dec 2012

