

Location

Room No	068	Sample No	A151561/01
Building Name	Newick House School	Identification	Sample/Presumed
Block Ref	A1	Position	Wall
Name	Electrical Cupboard	Use	Shuttering to switchgear

Material Assessment

Product Type	AIB	Damage	Medium
Surface Treatment	Unsealed AIB	Asbestos Type	Amphibole asbestos excluding crocidolite

Priority Assessment

Primary Activity	High levels of disturbance	Secondary Activity	High levels of disturbance
Location	Rooms up to 100m2	Accessibility	Easily disturbed
Extent Amount	<=10m2 or <=10m pipe run	No of Occupants	None
Frequency of Use	Daily	Duration of Use	<1 hour
Maint Activity	High levels of disturbance	Freq of Maint	>1 per month

Inspection

Frequency	Monitor condition every 6 months		
Initial inspection	29/08/2006	Next Inspection	28 February



Management Summary

Material Assessment Score		Priority Assessment Score		Total Assessed Risk		
Score	8	Medium Risk	Score	9	Medium Risk	Medium Risk

Action Plan	Label find (if appropriate). Surface treat or encapsulate at earliest practicable opportunity, if not already done so.
--------------------	--

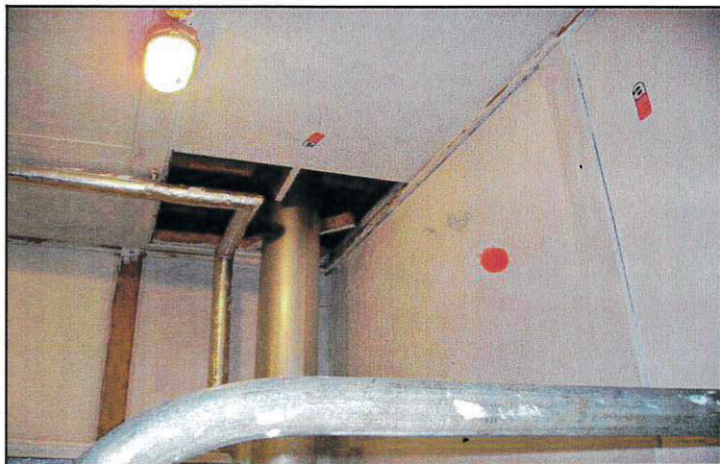
Comments	
-----------------	--

Location			
Room No	076	Sample No	A155385/08
Building Name	Boiler House	Identification	Sample/Presumed
Block Ref	C1	Position	Wall
Name	Boiler House	Use	Board to wall

Material Assessment			
Product Type	AIB	Damage	Low
Surface Treatment	Sealed AIB, etc	Asbestos Type	Amphibole asbestos excluding crocidolite

Priority Assessment			
Primary Activity	Periodic disturbance	Secondary Activity	Periodic disturbance
Location	Rooms up to 100m2	Accessibility	Easily disturbed
Extent Amount	>10m2 to <=50m2 or >10 to <=50m pipe run	No of Occupants	None
Frequency of Use	Weekly	Duration of Use	<1 hour
Maint Activity	Low disturbance	Freq of Maint	<=1 per year

Inspection			
Frequency	Monitor condition every 12 months		
Initial inspection	29/08/2006	Next Inspection	29 August



Management Summary			
Material Assessment Score Score 6 Low Risk		Priority Assessment Score Score 6 Low Risk	
Total Assessed Risk Low Risk			
Action Plan	Label find (if appropriate)		
Comments			

Location

Room No	076	Sample No	A155385/08
Building Name	Boiler House	Identification	Sample/Presumed
Block Ref	C1	Position	Ceiling
Name	Boiler House	Use	Board to ceiling

Material Assessment

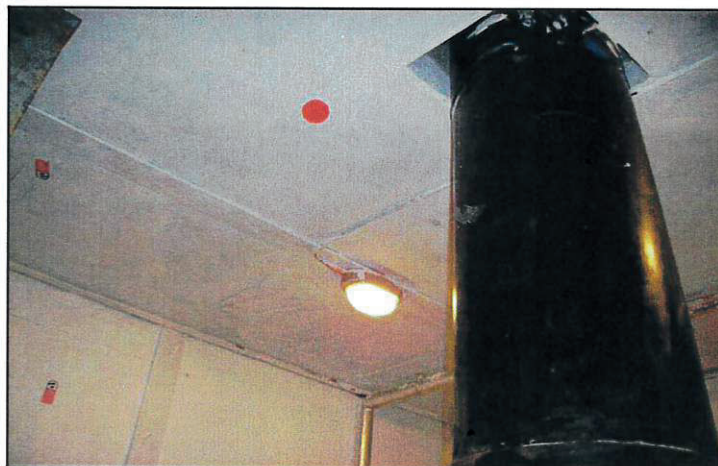
Product Type	AIB	Damage	Low
Surface Treatment	Sealed AIB, etc	Asbestos Type	Amphibole asbestos excluding crocidolite

Priority Assessment

Primary Activity	Periodic disturbance	Secondary Activity	Periodic disturbance
Location	Rooms up to 100m2	Accessibility	Occasionally likely to be disturbed
Extent Amount	>10m2 to <=50m2 or >10 to <=50m pipe run	No of Occupants	None
Frequency of Use	Weekly	Duration of Use	<1 hour
Maint Activity	Low disturbance	Freq of Maint	<=1 per year

Inspection

Frequency	Monitor condition every 12 months		
Initial inspection	29/08/2006	Next Inspection	29 August



Management Summary

Material Assessment Score		Priority Assessment Score		Total Assessed Risk
Score	6	Score	6	Low Risk
Low Risk		Low Risk		Low Risk

Action Plan: Label find (if appropriate)

Comments:

Location

Room No	Block external	Sample No	N/A
Building Name	Boiler House	Identification	Visually Identified
Block Ref	C1	Position	Roof
Name	Boiler House	Use	Cement cowl

Material Assessment

Product Type	Asbestos cement	Damage	Low
Surface Treatment	Unsealed Cement	Asbestos Type	Chrysotile

Priority Assessment

Primary Activity	Periodic disturbance	Secondary Activity	Periodic disturbance
Location	Rooms up to 100m2	Accessibility	Usually inaccessible or unlikely to be disturb
Extent Amount	<=10m2 or <=10m pipe run	No of Occupants	None
Frequency of Use	Weekly	Duration of Use	<1 hour
Maint Activity	Low disturbance	Freq of Maint	ACM unlikely to be disturbed

Inspection

Frequency	Monitor condition every 12 months		
Initial inspection	29/08/2006	Next Inspection	29 August



Management Summary

Material Assessment Score	Priority Assessment Score	Total Assessed Risk
Score 4 Very Low Risk	Score 5 Low Risk	Low Risk

Action Plan	Label find (if appropriate)
-------------	-----------------------------

Comments	
----------	--

ASBESTOS MONITORING LOG

PLINTH Ref : 00502
Establishment Name : Newick House School
Name : D.J Pilbeam
Position : Premises Manager
Date: 17th May 2012

Block Ref	Room Number	Function / Name	Sample Number	Position	Use	Assessed Risk	Inspection Frequency	Remedial Work Required / Management Plan Notes	Next Inspection	Asbestos Register Updated?
A1	049	Female WC	A151566/06	Wall	Rope seal to sanitary burner door	Medium Risk	Monitor condition every 6 months	Removed April 2012		Yes
A1	068	Electrical Cupboard	A151561/01	Wall	Shuttering to switchgear	Medium Risk	Monitor condition every 6 months	N/A	Dec-13	Yes
A1	069	Female WC	A151561/01	Door	Panel to sanitary burner door	Medium Risk	Monitor condition every 6 months	Removed April 2012		Yes
A1	075	Gas cupboard	A155385/08	Wall	Board to wall	Medium Risk	Monitor condition every 6 months	Removed April 2012		Yes
A1	022	Storage	A151564/04	Floor	Light grey floor tiles	Low Risk	Monitor condition every 12 months	Removed April 2012		Yes
A1	037	Storage	A151563/03	Floor	Grey floor tiles	Low Risk	Monitor condition every 12 months	Removed April 2012		Yes
A1	049	Female WC	A151562/02	Wall	Flue pipe	Low Risk	Monitor condition every 12 months	N/A	Dec-13	Yes
A1	069	Female WC	A151561/01	Wall	Board to wall	Low Risk	Monitor condition every 12 months	Removed April 2012		Yes
A1	069	Female WC	A151562/02	Wall	Flue pipe	Low Risk	Monitor condition every 12 months	N/A	Dec-13	Yes
A1	074	Storage	A151563/03	Floor	Grey floor tiles	Low Risk	Monitor condition every 12 months	N/A	Dec-13	Yes
A1	075	Gas cupboard	A155385/08	Ceiling	Board to ceiling	Low Risk	Monitor condition every 12 months	N/A	Dec-13	Yes
C1	076	Boiler House	A155386/09	Plant	Rope packing to flue	Low Risk	Monitor condition every 12 months	Removed April 2012		Yes
C1	076	Boiler House	A155385/08	Ceiling	Board to flue	Low Risk	Monitor condition every 12 months	Removed 1st October 2008		Yes
C1	076	Boiler House	A155385/08	Wall	Board to wall	Low Risk	Monitor condition every 12 months	N/A	Dec-13	Yes
C1	076 Block external	Boiler House	A155385/08	Ceiling	Board to ceiling	Low Risk	Monitor condition every 12 months	N/A	Dec-13	Yes
C1		Boiler House	N/A	Roof	Cement cowl	Low Risk	Monitor condition every 12 months	N/A	Dec-13	Yes