

SECTION A-A OVERLAND FLOW ROUTE  
SCALE 1:100

**SAFETY, HEALTH AND ENVIRONMENTAL INFORMATION**

IN ADDITION TO THE HAZARDS/RISKS NORMALLY ASSOCIATED WITH THE TYPES OF WORK DETAILED ON THIS DRAWING, NOTE THE FOLLOWING:

**CONSTRUCTION**

C1 - EXISTING SERVICES AND HIGHWAY DRAINAGE ALONG FONTWELL AVENUE.  
 C2. COAL TAR PRESENT IN FABRIC OF EXISTING CARRIAGEWAY  
 C3. POTENTIAL BURIED UNEXPLODED ORDNANCE (UXO)  
 C4. INTERFACE WITH EXISTING TRAFFIC & PEDESTRIANS WHEN IMPLEMENTING PHASED WORKS. TEMPORARY DIVERSIONS AND TRAFFIC MANAGEMENT  
 C5 - GROUND INFILTRATION RATES TO BE TESTED ON SITE TO CONFIRM EXCAVATION DEPTHS FOR TANKS 1A & 1B.

**MAINTENANCE / CLEANING**

NONE IDENTIFIED.

**DECOMMISSIONING / DEMOLITION**

NONE IDENTIFIED.

IT IS ASSUMED THAT ALL WORKS WILL BE CARRIED OUT BY A COMPETENT CONTRACTOR WORKING, WHERE APPROPRIATE, TO AN APPROVED METHOD STATEMENT.

- KEY**
- 10.100 F225 PROPOSED SURFACE WATER CARRIER DRAIN (PIPE REF NUMBER AND DIAMETER SHOWN)
  - 10.000 F225 PROPOSED FILTER DRAIN (PIPE REF NUMBER AND DIAMETER SHOWN) REFER TO WSSC STANDARD DETAIL WSSC-SD1-0500-043
  - Z25 EXISTING SURFACE WATER DRAIN (DIAMETER SHOWN WHERE KNOWN)
  - OF EXISTING GULLY AND CONNECTION
  - PROPOSED CHAMBER WITH REFERENCE NUMBER
  - EXISTING CHAMBER WITH REFERENCE NUMBER
  - PROPOSED GULLY AND CONNECTION REFER TO PRECAST AND IN-SITU CAST GULLIES DRG NO. HME0500007
  - EXISTING GULLY AND CONNECTION
  - BASE OF SWALE
  - 4m WIDE SWALE CORRIDOR, 1m BASE 0.5m DEPTH, 1 IN 3 SIDE SLOPES. REFER TO WSSC STANDARD DETAIL S278/38/26 FOR THE SWALE AND A29-CAP-HDG-00-DR-D-0198
  - BELOW SWALE TRIPLE OUTFALL CHAMBER WITH REFERENCE NUMBER REFER TO A29-CAP-HDG-00-DR-D-0053
  - INFILTRATION STORAGE REFER TO DRAWING NO. A29-CAP-HDG-00-DR-D-0185
  - LAND DRAINAGE - FRENCH DRAIN 300MM WIDE, 600MM DEEP, 1.5M OFFSET FROM TOP OF RISE OF EMBANKMENT. SEE DETAIL ON DRAWING NO. A29-CAP-HDG-00-DR-C-0048
  - LAND DRAINAGE - FILTER DRAIN REFER TO WSSC STANDARD DETAIL WSSC-SD1-0500-043
  - FIN DRAIN - TO CONNECT EACH TO DIS MANHOLE DIRECTION OF FLOW SHOWN ON PLAN REFER TO WSSC STANDARD DETAIL WSSC-SD1-0500-044
  - HEADWALL WITH REFERENCE NUMBER. REFER TO TABLE 1 FOR TYPE REFER TO WSSC STANDARD DETAIL DRAWINGS BRICK HEADWALL - WSSC-SD1-0500-011 & 012 BAGWORK HEADWALL - WSSC-SD1-0500-014 TO 16
  - EXISTING DRAIN TO BE PROTECTED WITH CONCRETE SURROUND. WSSC STANDARD DETAIL S278/38/33 TYPE Z
  - GRATED CHANNEL
  - HIGHWAY DITCH 0.5m BASE 1 IN 3 SIDE SLOPES. REFER TO WSSC STANDARD DETAILS S278/38/25

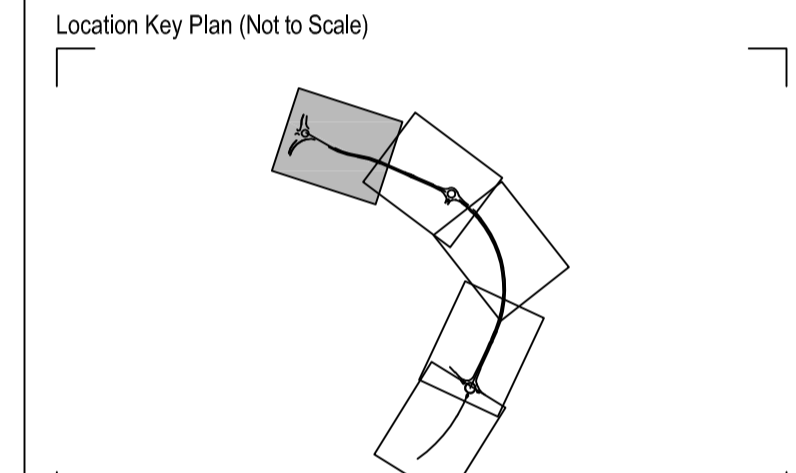
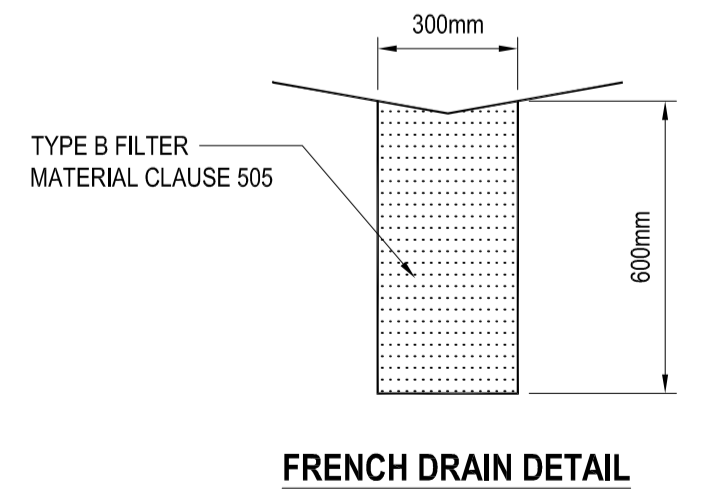
- NOTES**
- THIS DRAWING IS TO BE READ IN CONJUNCTION WITH ALL RELEVANT DRAWINGS AND SPECIFICATION APPENDIX 500 SERIES DOCUMENT NO. A29-CAP-GEN-00-SP-C-0032
  - THE WORKS SHALL BE CARRIED OUT IN ACCORDANCE WITH REQUIREMENTS OF WSSC
  - ALL CHAMBERS TO BE CATCHPITS WITH 450mm SUMP UNLESS OTHERWISE STATED
  - FOR WSSC STANDARD DETAIL REFER TO THE FOLLOWING DRAWING: FOR CATCHPIT DETAIL REFER TO TYPE 7 CHAMBER (1050 CATCHPIT) DRG NO. HCD F11. INTERNAL DIAMETER D AS SPECIFIED IN THE MANHOLE SCHEDULE
  - TYPE 1 CHAMBER (BRICK OR IN-SITU CONCRETE MANHOLE)- HCD F3
  - TYPE 3 CHAMBER (PRECAST CONCRETE MANHOLE)- HCD F5
  - TYPE 4 CHAMBER (PRECAST MANHOLE)- HCD F9
  - FOR CONTROL DISCHARGE MANHOLE DETAIL REFER TO VORTEX FLOW CONTROL TYPE B MANHOLE DRG NO. S278/38/14 REV A
  - FOR WSSC STANDARD DETAIL REFER TO PIPE BEDDING DETAILS DRG NO. WSSC278/38/33 REV A REFER TO DOCUMENT A29-CAP-HDG-00-SH-D-0025 FOR THE DRAINAGE MANHOLE AND PIPE SCHEDULE
  - INFILTRATION RATES AT THE INVERT LEVELS OF THE CELLULAR STORAGE UNITS ARE TO BE CONFIRMED ON SITE IN JANUARY 2021. IF THE INFILTRATION RATE IS NOT ACCEPTABLE, ADDITIONAL EXCAVATION TO THE SAND LAYER, AT APPROXIMATELY 10.30M AOD, IS REQUIRED. THE ADDITIONAL EXCAVATED MATERIAL IS TO BE REPLACED WITH A SUITABLE SELECTED GRANULAR FILL MATERIAL, CLASS BA
  - EXISTING DRAINAGE MH CL AND IL PROVIDED FROM THE GPR SURVEY UNDERTAKEN BY MACLEOD SIMMONDS GEOSPATIAL SURVEYS IN AUGUST 2020. REFER TO DRAWING NO. SMLD201451-01 SHEETS 1 TO 15
  - GULLY OUTLET PIPES CONNECTING TO CARRIER DRAINS SHALL BE 150MM DIAMETER PIPES IN ACCORDANCE WITH WSSC STANDARD DETAIL S278/38/11. OUTLET PIPES FOR DOUBLE GULLIES SHALL BE 225mm DIAMETER COMBINED DRAINAGE AND KERB SYSTEM OUTLET PIPES CONNECTING TO CARRIER DRAINS SHALL BE 150MM DIAMETER PIPES IN ACCORDANCE WITH MANUFACTURER'S OUTFALL TYPES
  - PIPE SIZES AND DESIGN BASED UPON POLYPIPE RIGIDRAIN PRODUCT ALL NEWLY PROPOSED PIPES TO BE MANUFACTURED TO SNI STIFFNESS CLASS
  - TOP OF BATTER FOR 1:3 SIDE SLOPES TO BE SAME LEVEL ON BOTH SIDES OF SWALE IN ALL LOCATIONS
  - LOCATIONS FOR CHANGES IN KERB TYPES ARE APPROXIMATE AND ARE DICTATED BY LOCATIONS OF DROP KERBS FOR CROSSINGS AND DRAINAGE SWALES AND EXACT LOCATIONS TO BE AGREED ON SITE WITH OVERSEEING ORGANISATION
  - KINGSSPAN BYPASS SEPARATORS TO BE INSTALLED IN ACCORDANCE WITH MANUFACTURER'S INSTALLATION AND MAINTENANCE GUIDANCE WITH SUITABLE SOLAR POWERED GSM AND BEACON ALARM SYSTEM. 300mm THICKNESS (GRADE: GEN 3 TO BS 8500-2) CONCRETE SURROUND TO THE UNIT. HIGH GROUND WATER LEVEL TO BE MANAGED DURING INSTALLATION.
  - FOR CONSTRUCTION DETAILS REFER TO DRAWING A29-CAP-HDG-00-DR-D-0053 AND 0188.
  - LATERAL PIPES CONNECTING TO EXISTING GULLEYS MARKED AS REDUNDANT TO BE SEALED
  - AS A TEMPORARY SITUATION UNTILL THE SITE IS DEVELOPED WITH BARRATT'S PROPOSED SUDS (WHICH WILL MANAGE ALL DRAINAGE WITHIN THE SITE), A FRENCH DRAIN IS PROPOSED TO ALLOW ANY EXCESS FLOWS THAT CANNOT INFILTRATE, TO DISCHARGE TO THE SOUTH WEST SIDE OF THE A29 REALIGNMENT EMBANKMENT AS LAND DRAINAGE. AN OVERFLOW PIPE CROSSING IS PROVIDED BENEATH THE EMBANKMENT AT CHAINAGE CH 840, WHICH CONNECTS INTO THE PROPOSED DRAINAGE DITCH TO THE EXISTING BARRHAM LANE DITCH / RIFE
  - PROPOSED OVERALL DEPTH OF PAVEMENT BOUND MATERIAL AND SUB-BASE TO MATCH THE EXISTING DEPTHS IN ORDER TO MAINTAIN CONTINUITY OF DRAINAGE AT TIE-IN POINT. TO BE REVIEWED ON SITE WITH WSSC SITE SUPERVISOR

TABLE 1 - HEADWALL

REF No.	NETWORK.	TYPE.
HW 1-1.	1	BRICK
HW 1-2	1	BRICK
HW 2-1	2	BRICK

TABLE 2 - Infiltration Cellular Storage Schedule

Infiltration Tank No.	Product	Invert Level	Length (m)	Width (m)	Depth of Units (m)	Storage Volume (m3)
1A	SDS Geolight 200 with 500mm Trench	13.000m	11.5m	11.0m	1m	126.5m3
2No. 1B	SDS Geolight 200 with 500mm Trench	13.000m	22.0m	6.0m	1m	242m3



Rev	Drawn	Checked	App'd	Description	Date
P05	AZ	KS	AB	CHAMBERS 1A/5, 6 & 7 AND 1B/1, 7 & 12 POSITIONS ADJUSTED IN CARRIAGEWAY. TANKS 1B WIDENED TO 6M NOTE 13 AMENDED	08.03.2021
P04	JB	KS	AB	CLIENT COMMENTS ADDRESSED	08.03.2021
P03	JB	KS	AB	ADDRESS WSSC COMMENTS, FIN AND LAND DRAINAGE ADDED. KERB DETAILS SHOWN ON NEW DRAWINGS	27.11.2020
P02	LR	AZ	KS	UPDATED MODELS	31.07.2020
P01	PD	RP	KS	FIRST ISSUE	07.07.2020

Purpose of Issue  
**For Review and Comment** S3

Classification  
**Commercial In Confidence**



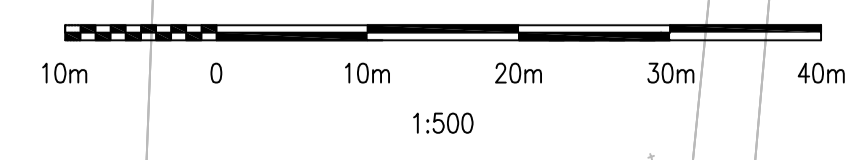
Project  
**A29 Realignment Scheme**

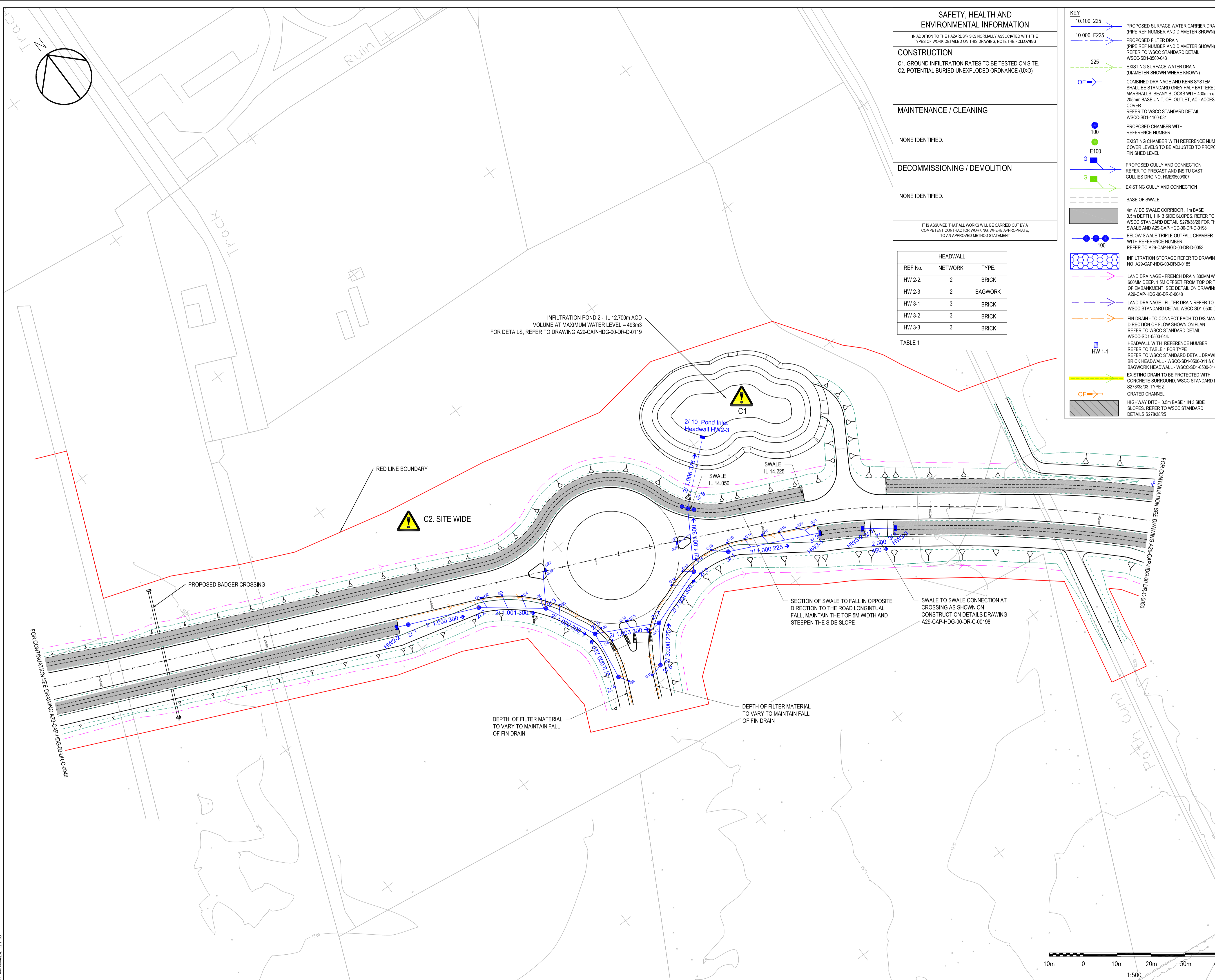
Drawing  
**Drainage Layout Plan**  
Sheet 1 of 5

Scale @ A1	Drawn	Checked	Approved
1:500	PD	RP	KS

Project No.	Date
CS099505	02.07.20

Drawing Identifier  
Project - Originator - Zone - Level - File Type - Role - Number  
**A29-CAP-HDG-00-DR-C-0048** BS1192 Consultant revision  
**P05**





**SAFETY, HEALTH AND ENVIRONMENTAL INFORMATION**

IN ADDITION TO THE HAZARDS/RISKS NORMALLY ASSOCIATED WITH THE TYPES OF WORK DETAILED ON THIS DRAWING, NOTE THE FOLLOWING

**CONSTRUCTION**

C1. GROUND INFILTRATION RATES TO BE TESTED ON SITE.  
C2. POTENTIAL BURIED UNEXPLODED ORDNANCE (UXO)

**MAINTENANCE / CLEANING**

NONE IDENTIFIED.

**DECOMMISSIONING / DEMOLITION**

NONE IDENTIFIED.

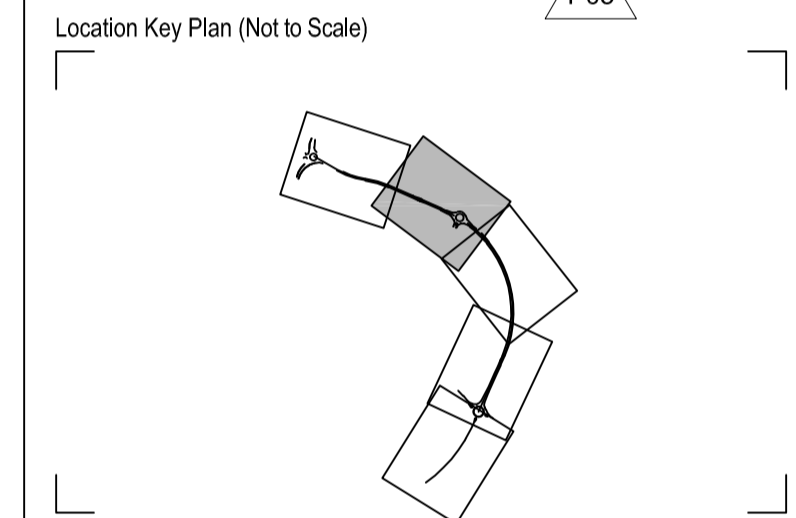
IT IS ASSUMED THAT ALL WORKS WILL BE CARRIED OUT BY A COMPETENT CONTRACTOR WORKING, WHERE APPROPRIATE, TO AN APPROVED METHOD STATEMENT

TABLE 1

REF No.	NETWORK.	TYPE.
HW 2-2.	2	BRICK
HW 2-3	2	BAGWORK
HW 3-1	3	BRICK
HW 3-2	3	BRICK
HW 3-3	3	BRICK

- KEY**
- 10.100 225 PROPOSED SURFACE WATER CARRIER DRAIN (PIPE REF NUMBER AND DIAMETER SHOWN)
  - 10.000 F225 PROPOSED FILTER DRAIN (PIPE REF NUMBER AND DIAMETER SHOWN) REFER TO WSCC STANDARD DETAIL WSCC-SD1-0500-043
  - 225 EXISTING SURFACE WATER DRAIN (DIAMETER SHOWN WHERE KNOWN)
  - OF COMBINED DRAINAGE AND KERB SYSTEM. SHALL BE STANDARD GREY HALF BATTERED MARSHALLS BEANY BLOCKS WITH 430mm x 205mm BASE UNIT. OF- OUTLET, AC - ACCESS COVER REFER TO WSCC STANDARD DETAIL WSCC-SD1-1100-031
  - PROPOSED CHAMBER WITH REFERENCE NUMBER
  - EXISTING CHAMBER WITH REFERENCE NUMBER COVER LEVELS TO BE ADJUSTED TO PROPOSED FINISHED LEVEL
  - E100
  - PROPOSED GULLY AND CONNECTION REFER TO PRECAST AND INSITU CAST GULLIES DRG NO. HME/0500/007
  - G EXISTING GULLY AND CONNECTION
  - BASE OF SWALE
  - 4m WIDE SWALE CORRIDOR, .1m BASE 0.5m DEPTH, 1 IN 3 SIDE SLOPES. REFER TO WSCC STANDARD DETAIL S278/38/26 FOR THE SWALE AND A29-CAP-HDG-00-DR-D-0198 BELOW SWALE TRIPLE OUTFALL CHAMBER WITH REFERENCE NUMBER REFER TO A29-CAP-HDG-00-DR-D-0053
  - 100 INFILTRATION STORAGE REFER TO DRAWING NO. A29-CAP-HDG-00-DR-D-0185
  - LAND DRAINAGE - FRENCH DRAIN 300MM WIDE, 600MM DEEP, 1.5M OFFSET FROM TOP OR TOE OF EMBANKMENT. SEE DETAIL ON DRAWING NO. A29-CAP-HDG-00-DR-C-0048
  - LAND DRAINAGE - FILTER DRAIN REFER TO WSCC STANDARD DETAIL WSCC-SD1-0500-043
  - FIN DRAIN - TO CONNECT EACH TO DIS MANHOLE DIRECTION OF FLOW SHOWN ON PLAN REFER TO WSCC STANDARD DETAIL WSCC-SD1-0500-044
  - HEADWALL WITH REFERENCE NUMBER. REFER TO TABLE 1 FOR TYPE REFER TO WSCC STANDARD DETAIL DRAWINGS BRICK HEADWALL - WSCC-SD1-0500-011 & 012 BAGWORK HEADWALL - WSCC-SD1-0500-014 to 016
  - EXISTING DRAIN TO BE PROTECTED WITH CONCRETE SURROUND. WSCC STANDARD DETAIL S278/38/33 TYPE Z
  - GRADED CHANNEL
  - OF HIGHWAY DITCH 0.5m BASE 1 IN 3 SIDE SLOPES. REFER TO WSCC STANDARD DETAILS S278/38/25

- NOTES**
- THIS DRAWING IS TO BE READ IN CONJUNCTION WITH ALL RELEVANT DRAWINGS AND SPECIFICATION APPENDIX 500 SERIES DOCUMENT NO A29-CAP-HDG-00-DR-C-0022
  - THE WORKS SHALL BE CARRIED OUT IN ACCORDANCE WITH REQUIREMENTS OF WSCC
  - ALL CHAMBERS TO BE CATCHPITS WITH 450mm SLUMP UNLESS OTHERWISE STATED
  - FOR WSCC STANDARD DETAIL REFER TO THE FOLLOWING DRAWING:
    - FOR CATCHPIT DETAIL REFER TO TYPE 7 CHAMBER (1050 CATCHPIT) DRG NO. HCD F11. INTERNAL DIAMETER D AS SPECIFIED IN THE MANHOLE SCHEDULE
    - TYPE 1 CHAMBER (BRICK OR IN-SITU CONCRETE MANHOLE)- HCD F3
    - TYPE 3 CHAMBER (PRECAST CONCRETE MANHOLE)- HCD F5
    - TYPE 4 CHAMBER (PRECAST MANHOLE)- HCD F9
    - FOR CONTROL DISCHARGE MANHOLE DETAIL REFER TO VORTEX FLOW CONTROL TYPE B MANHOLE DRG NO. S278/38/14 REV A
    - FOR PROPOSED PIPE BEDDING DETAILS REFER TO PIPE BEDDING DETAILS DRG NO. WSCC S278/38/33 REV A
  - REFER TO DOCUMENT A29-CAP-HDG-00-SH-D-0025 FOR THE DRAINAGE MANHOLE AND PIPE SCHEDULE
  - INFILTRATION RATES AT THE INVERT LEVELS OF THE CELLULAR STORAGE UNITS ARE TO BE CONFIRMED ON SITE IN JANUARY 2021. IF THE INFILTRATION RATE IS NOT ACCEPTABLE, ADDITIONAL EXCAVATION TO THE SAND LAYER, AT APPROXIMATELY 10,000 AOD, IS REQUIRED. THE ADDITIONAL EXCAVATED MATERIAL IS TO BE REPLACED WITH A SUITABLE SELECTED GRANULAR FILL MATERIAL, CLASS GA
  - EXISTING DRAINAGE MH CL AND IL PROVIDED FROM THE GPR SURVEY UNDERTAKEN BY MACLEOD SIMMONDS GEOSPATIAL SURVEYS IN AUGUST 2020. REFER TO DRAWING NO 5 MSLD201451-01 SHEETS 1 TO 15
  - GULLY OUTLET PIPES CONNECTING TO CARRIER DRAINS SHALL BE 150MM DIAMETER PIPES IN ACCORDANCE WITH WSCC STANDARD DETAIL S278/38/11. OUTLET PIPES FOR DOUBLE GULLIES SHALL BE 225mm DIAMETER COMBINED DRAINAGE AND KERB SYSTEM OUTLET PIPES CONNECTING TO CARRIER DRAINS SHALL BE 150MM DIAMETER PIPES IN ACCORDANCE WITH MANUFACTURER'S OUTFALL TYPES
  - PIPE SIZES AND DESIGN BASED UPON POLYPIPE RIGIDRAIN PRODUCT ALL NEWLY PROPOSED PIPES TO BE MANUFACTURED TO SNE STIFFNESS CLASS.
  - TOP OF BATTER FOR 1:3 SIDE SLOPES TO BE SAME LEVEL ON BOTH SIDES OF SWALE IN ALL LOCATIONS.
  - LOCATIONS FOR CHANGES IN KERB TYPES ARE APPROXIMATE AND ARE DICTATED BY LOCATIONS OF DROP KERBS FOR CROSSINGS AND DRAINAGE SWALES AND EXACT LOCATIONS TO BE AGREED ON SITE WITH OVERSEEING ORGANISATION
  - KINGSPAN BYPASS SEPARATORS TO BE INSTALLED IN ACCORDANCE WITH MANUFACTURER'S INSTALLATION AND MAINTENANCE GUIDANCE WITH SUITABLE SOLAR POWERED GSM AND BEACON ALARM SYSTEM. 300mm THICKNESS (GRADE: GEN 3 TO BS 8500-2) CONCRETE SURROUND TO THE UNIT. HIGH GROUND WATER LEVEL TO BE MANAGED DURING INSTALLATION.
  - FOR CONSTRUCTION DETAILS REFER TO DRAWING A29-CAP-HDG-00-DR-D-0053 AND 0198.
  - LATERAL PIPES CONNECTING TO EXISTING GULLIES MARKED AS REDUNDANT TO BE SEALED
  - AS A TEMPORARY SITUATION UNTILL THE SITE IS DEVELOPED WITH BARRATT'S PROPOSED SUDS (WHICH WILL MANAGE ALL DRAINAGE WITHIN THE SITE), A FRENCH DRAIN IS PROPOSED TO ALLOW ANY EXCESS FLOWS THAT CANNOT INFILTRATE, TO DISCHARGE TO THE SOUTH WEST SIDE OF THE A29 REALIGNMENT EMBANKMENT AS LAND DRAINAGE. AN OVERFLOW PIPE CROSSING IS PROVIDED BENEATH THE EMBANKMENT AT CHAINAGE CH 840, WHICH CONNECTS INTO THE PROPOSED DRAINAGE DITCH TO THE EXISTING BARNHAM LANE DITCH RIFE
  - PROPOSED OVERALL DEPTH OF PAVEMENT BOUND MATERIAL AND SUB-BASE TO MATCH THE EXISTING DEPTHS IN ORDER TO MAINTAIN CONTINUITY OF DRAINAGE AT TIE-IN POINT. TO BE REVIEWED ON SITE WITH WSCC SITE SUPERVISOR



Rev	Drawn	Checked	App'd	Description	Date
P05	AZ	KS	AB	NOTE 13 AMENDED	08.04.2021
P04	JB	KS	AB	CLIENT COMMENTS ADDRESSED	08.03.2021
P03	JB	KS	AB	ADDRESS WSCC COMMENTS, LAND DRAINAGE ADDED. KERB DETAILS SHOWN ON NEW DRAWINGS	27.11.2020
P02	LR	AZ	KS	UPDATED MOBILES	31.07.2020
P01	PD	RP	KS	FIRST ISSUE	07.07.2020

Purpose of Issue  
**For Review and Comment** S3

Classification  
**Commercial In Confidence**



Project  
**A29 Realignment Scheme**

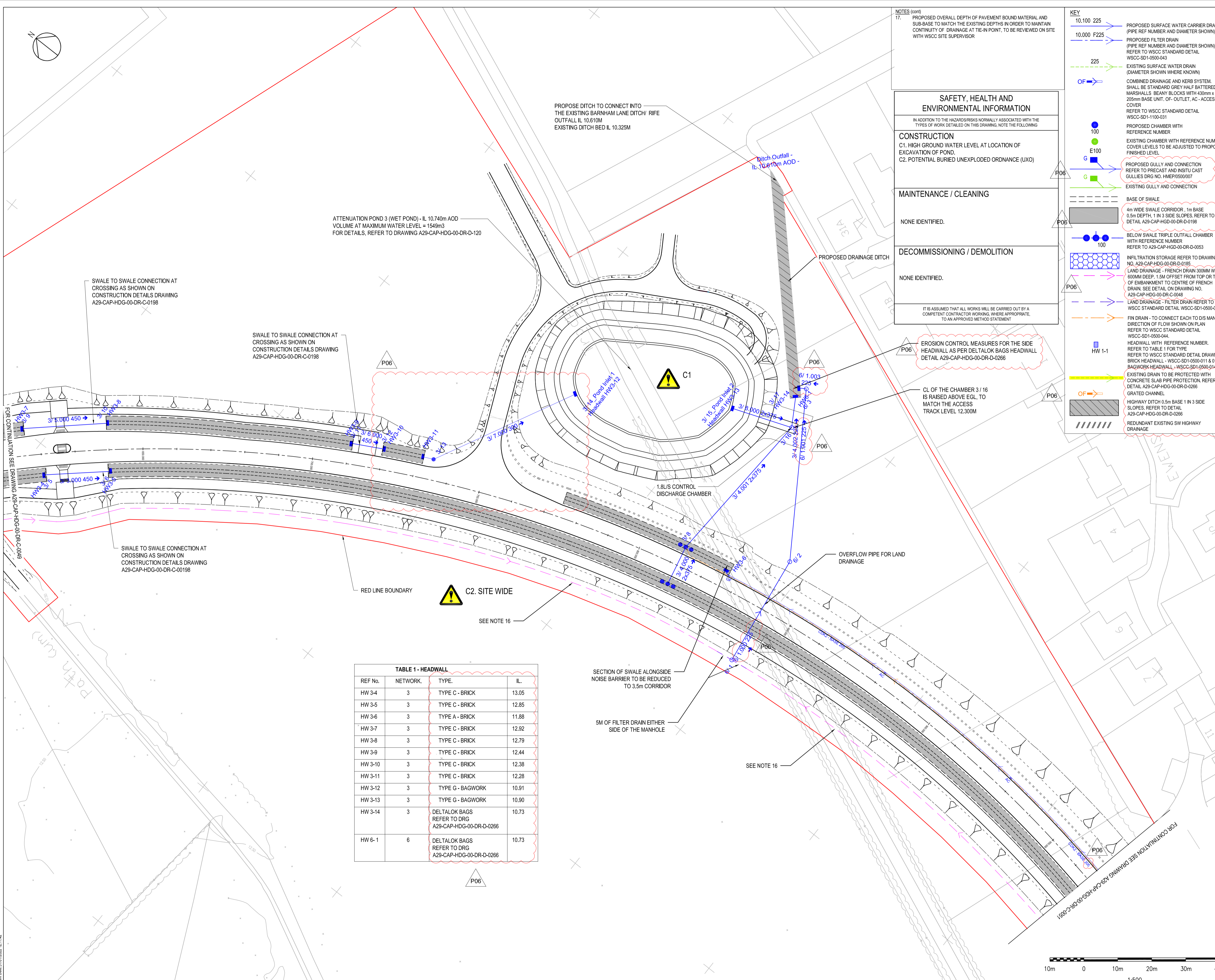
Drawing  
**Drainage Layout Plan**  
Sheet 2 of 5

Scale @ A1	Drawn	Checked	Approved
1:500	PD	RP	KS

Project No.	Date
CS099505	02.07.20

Drawing Identifier  
Project - Originator - Zone - Level - File Type - Role - Number  
**A29-CAP-HDG-00-DR-C-0049** P05





**NOTES (cont)**  
 17. PROPOSED OVERALL DEPTH OF PAVEMENT BOUND MATERIAL AND SUB-BASE TO MATCH THE EXISTING DEPTHS IN ORDER TO MAINTAIN CONTINUITY OF DRAINAGE AT TIE-IN POINT, TO BE REVIEWED ON SITE WITH WSSC SITE SUPERVISOR

**SAFETY, HEALTH AND ENVIRONMENTAL INFORMATION**  
 IN ADDITION TO THE HAZARDS/RISKS NORMALLY ASSOCIATED WITH THE TYPES OF WORK DETAILED ON THIS DRAWING, NOTE THE FOLLOWING

**CONSTRUCTION**  
 C1. HIGH GROUND WATER LEVEL AT LOCATION OF EXCAVATION OF POND.  
 C2. POTENTIAL BURIED UNEXPLODED ORDNANCE (UXO)

**MAINTENANCE / CLEANING**  
 NONE IDENTIFIED.

**DECOMMISSIONING / DEMOLITION**  
 NONE IDENTIFIED.

IT IS ASSUMED THAT ALL WORKS WILL BE CARRIED OUT BY A COMPETENT CONTRACTOR WORKING WHERE APPROPRIATE, TO AN APPROVED METHOD STATEMENT

**KEY**

- 10.100 Z25 PROPOSED SURFACE WATER CARRIER DRAIN (PIPE REF NUMBER AND DIAMETER SHOWN)
- 10.000 F225 PROPOSED FILTER DRAIN (PIPE REF NUMBER AND DIAMETER SHOWN) REFER TO WSSC STANDARD DETAIL WSSC-SD1-0500-043
- Z25 EXISTING SURFACE WATER DRAIN (DIAMETER SHOWN WHERE KNOWN)
- OF COMBINED DRAINAGE AND KERB SYSTEM. SHALL BE STANDARD GREY HALF BATTERED MARSHALLS BEANY BLOCKS WITH 430mm x 205mm BASE UNIT. OF-OUTLET, AC-ACCESS COVER
- P06 PROPOSED CHAMBER WITH REFERENCE NUMBER
- G EXISTING CHAMBER WITH REFERENCE NUMBER
- E100 EXISTING CHAMBER WITH REFERENCE NUMBER
- P06 PROPOSED GULLY AND CONNECTION REFER TO PRECAST AND INSITU CAST GULLIES DRG NO. HMEP0500007
- G EXISTING GULLY AND CONNECTION
- P06 BASE OF SWALE
- 4m WIDE SWALE CORRIDOR, 1m BASE 0.5m DEPTH, 1 IN 3 SIDE SLOPES. REFER TO DETAIL A29-CAP-HDG-00-DR-D-0198
- P06 BELOW SWALE TRIPLE OUTFALL CHAMBER WITH REFERENCE NUMBER REFER TO A29-CAP-HDG-00-DR-D-0053
- P06 INFILTRATION STORAGE REFER TO DRAWING NO. A29-CAP-HDG-00-DR-D-0185
- LAND DRAINAGE - FRENCH DRAIN 300MM WIDE, 600MM DEEP, 1.5M OFFSET FROM TOP OR TOE OF EMBANKMENT TO CENTRE OF FRENCH DRAIN. SEE DETAIL ON DRAWING NO. A29-CAP-HDG-00-DR-C-0048
- P06 LAND DRAINAGE - FILTER DRAIN REFER TO WSSC STANDARD DETAIL WSSC-SD1-0500-043
- FIN DRAIN - TO CONNECT EACH TO DIS MANHOLE DIRECTION OF FLOW SHOWN ON PLAN REFER TO WSSC STANDARD DETAIL WSSC-SD1-0500-044
- HEADWALL WITH REFERENCE NUMBER. REFER TO TABLE 1 FOR TYPE
- P06 REFER TO WSSC STANDARD DETAIL DRAWINGS BRICK HEADWALL - WSSC-SD1-0500-011 & 012 BAGWORK HEADWALL - WSSC-SD1-0500-014 to 18
- EXISTING DRAIN TO BE PROTECTED WITH CONCRETE SLAB PIPE PROTECTION. REFER TO DETAIL A29-CAP-HDG-00-DR-D-0266
- P06 GRATED CHANNEL
- HW 1-1 HIGHWAY DITCH 0.5m BASE 1 IN 3 SIDE SLOPES. REFER TO DETAIL A29-CAP-HDG-00-DR-D-0266
- REDUNDANT EXISTING SW HIGHWAY DRAINAGE

- NOTES**
- THIS DRAWING IS TO BE READ IN CONJUNCTION WITH ALL RELEVANT DRAWINGS AND SPECIFICATION APPENDIX 500 SERIES DOCUMENT NO A29-CAP-GEN-00-SP-C-032
  - THE WORKS SHALL BE CARRIED OUT IN ACCORDANCE WITH REQUIREMENTS OF WSSC
  - ALL CHAMBERS TO BE CATCHPIPS WITH 450mm SUMP UNLESS OTHERWISE STATED
  - FOR WSSC STANDARD DETAIL REFER TO THE FOLLOWING DRAWING: FOR CATCHPIPS DETAIL REFER TO TYPE 7 CHAMBER (1050 CATCHPIPS) DRG NO. HCD F11. INTERNAL DIAMETER D AS SPECIFIED IN THE MANHOLE SCHEDULE
  - TYPE 1 CHAMBER (BRICK OR IN-SITU CONCRETE MANHOLE)- HCD F3 (FOR PIPES 450 MAX. DIAMETER, MAX DEPTH 1500 + PIPE DIAMETER)
  - TYPE 3 CHAMBER (PRECAST CONCRETE MANHOLES)- HCD F5 (FOR PIPES 900 MAX. DIAMETER, DEPTH 1500+ TO 3000 + PIPE DIAMETER)
  - TYPE 4 CHAMBER (PRECAST MANHOLE)- HCD F6 (FOR PIPES 300 TO 900 DIAMETER, DEPTHS 3000+ TO 6000 + PIPE DIAMETER)
  - FOR CONTROL DISCHARGE MANHOLE DETAIL REFER TO VORTEX FLOW CONTROL TYPE B MANHOLE DRG NO. A29-CAP-HDG-00-DR-D-0266
  - FOR PROPOSED PIPE BEDDING DETAILS REFER SURFACE WARNING DRAIN TRENCH AND BEDDING DETAILS- HCD F1
  - REFER TO DOCUMENT A29-CAP-HDG-00-SH-D-0025 FOR THE DRAINAGE MANHOLE AND PIPE SCHEDULE
  - FURTHER WINTER INFILTRATION TESTING IS REQUIRED TO VALIDATE THE INFILTRATION TANK DESIGN AT FORTWELL AVENUE ROUNDABOUT. IF THE INFILTRATION RATE IS NOT ACCEPTABLE, ADDITIONAL EXCAVATION TO THE SAND LAYER, AT APPROXIMATELY 10,000 AOD, IS REQUIRED. THE ADDITIONAL EXCAVATED MATERIAL IS TO BE REPLACED WITH A SUITABLE SELECTED GRANULAR FILL MATERIAL, CLASS BA
  - EXISTING DRAINAGE MI CL AND IL PROVIDED FROM THE GPR SURVEY UNDERTAKEN BY MACLEOD SIMMONDS GEOSPATIAL SURVEYS IN AUGUST 2020. REFER TO DRAWING NO. S.MSLD201451-01 SHEETS 1 TO 15
  - P06 GULLY OUTLET PIPES CONNECTING TO CARRIER DRAINS SHALL BE 150MM DIAMETER PIPES IN ACCORDANCE WITH HME STANDARD DETAIL HMEP0500007. OUTLET PIPES FOR DOUBLE GULLIES SHALL BE 225mm DIAMETER
  - COMBINED DRAINAGE AND KERB SYSTEM OUTLET PIPES CONNECTING TO CARRIER DRAINS SHALL BE 150MM DIAMETER PIPES IN ACCORDANCE WITH MANUFACTURERS OUTFALL TYPES
  - PIPE SIZES AND DESIGN BASED UPON POLYPIPE RIGIDRAIN PRODUCT ALL NEWLY PROPOSED PIPES TO BE MANUFACTURED TO S86 STIFFNESS CLASS.
  - TOP OF BATTER FOR 1:3 SIDE SLOPES TO BE SAME LEVEL ON BOTH SIDES OF SWALE IN ALL LOCATIONS.
  - LOCATIONS FOR CHANGES IN KERB TYPES ARE APPROXIMATE AND ARE DICTATED BY LOCATIONS OF DROP KERBS FOR CROSSINGS AND DRAINAGE SWALES AND EXACT LOCATIONS TO BE AGREED ON SITE WITH OVERSEEING ORGANISATION
  - KINGSPIAN BYPASS SEPARATORS TO BE INSTALLED IN ACCORDANCE WITH MANUFACTURERS INSTALLATION AND MAINTENANCE GUIDANCE WITH SUITABLE SOLAR POWERED GSM AND BEACON ALARM SYSTEM, 300mm THICKNESS (GRADE: GEN 3 TO BS 8500-2) CONCRETE TO BASE AND SURROUND TO THE UNIT. THE EXCAVATION SHOULD BE DEWATERED USING SUITABLE PUMPING EQUIPMENT AND THIS SHOULD CONTINUE UNTIL THE INSTALLATION IS COMPLETE. IN ACCORDANCE WITH THE MANUFACTURERS INSTALLATION GUIDELINES
  - FOR CONSTRUCTION DETAILS REFER TO DRAWING A29-CAP-HDG-00-DR-D-0053, 0198 AND 0266.
  - LATERAL PIPES CONNECTING TO EXISTING GULLIES MARKED AS REDUNDANT TO BE SEALED AS PER SPECIFICATION APPENDIX 500 CLAUSE 11
  - AS A TEMPORARY SITUATION UNTIL THE SITE IS DEVELOPED WITH BARRATTS PROPOSED SUDS WHICH WILL MANAGE ALL DRAINAGE WITHIN THE SITE), A FRENCH DRAIN IS PROPOSED TO ALLOW ANY EXCESS FLOWS THAT CANNOT INFILTRATE, TO DISCHARGE TO THE SOUTH WEST SIDE OF THE A29 RE-ALIGNMENT EMBANKMENT AS LAND DRAINAGE. AN OVERFLOW PIPE CROSSING IS PROVIDED BENEATH THE EMBANKMENT AT CHAINAGE CH 840, WHICH CONNECTS INTO THE PROPOSED DRAINAGE DITCH TO THE EXISTING BARNHAM LANE DITCH / RIFE
- Location Key Plan (Not to Scale)

Rev	Drawn	Checked	Appr	Description	Date
P06 LR	KS	AB		NOTES AND KEY AMENDED. POND 3 ACCESS AMENDED AND F&D ACCESS ADDED	31.01.2022
P06 AZ	KS	AB		NOTE 13 AMENDED. HEADWALL 3-14 & 6-1 TYPE AMENDED	08.04.2021
P04 JB	KS	AB		CLIENT COMMENTS ADDRESSED	08.03.2021
P03 JB	KS	AB		ADDRESS WSSC COMMENTS. LAND DRAINAGE ADDED.	27.11.2020
P02 LR	AZ	KS		KERB DETAILS SHOWN ON NEW DRAWINGS	31.07.2020
P01 PD	RP	KS		UPDATED MODELS FIRST ISSUE	07.07.2020

Purpose of Issue  
**For Acceptance** S4

Classification  
**Commercial In Confidence**

Client

Project  
**A29 Realignment Scheme**

Drawing  
**Drainage Layout Plan Sheet 3 of 5**

Scale @ A1	Drawn	Checked	Approved
1:500	PD	RP	KS

Project No.	Date
CS099505	02.07.20

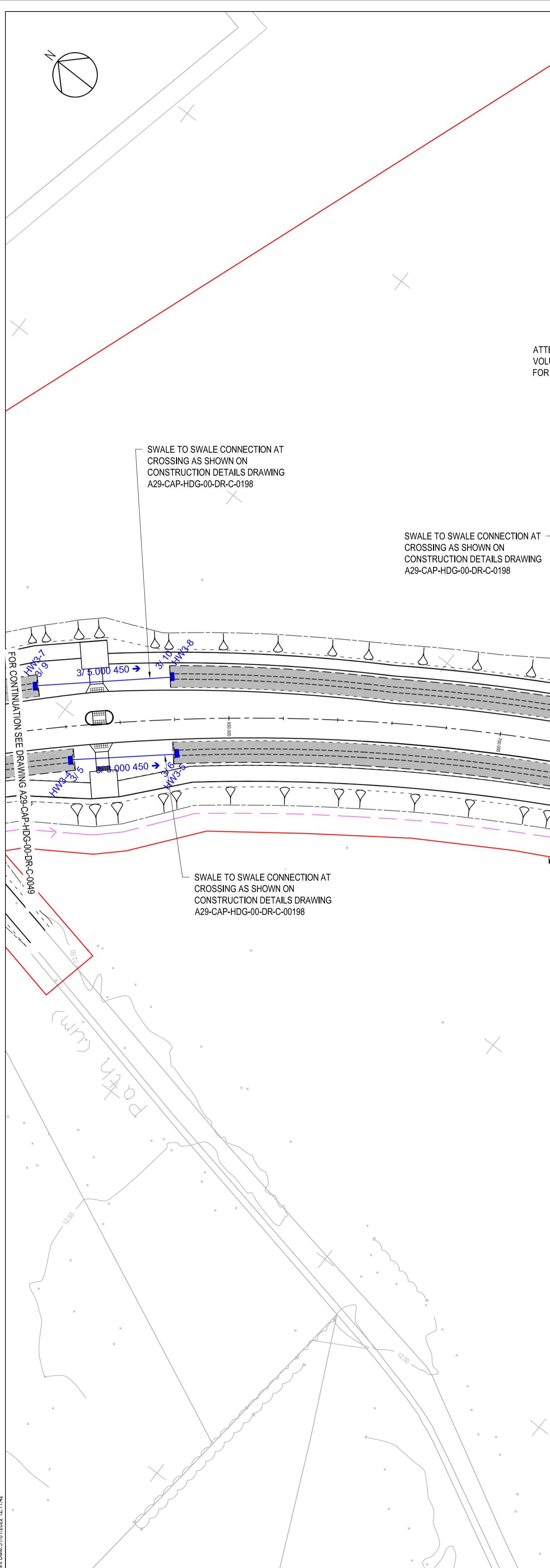
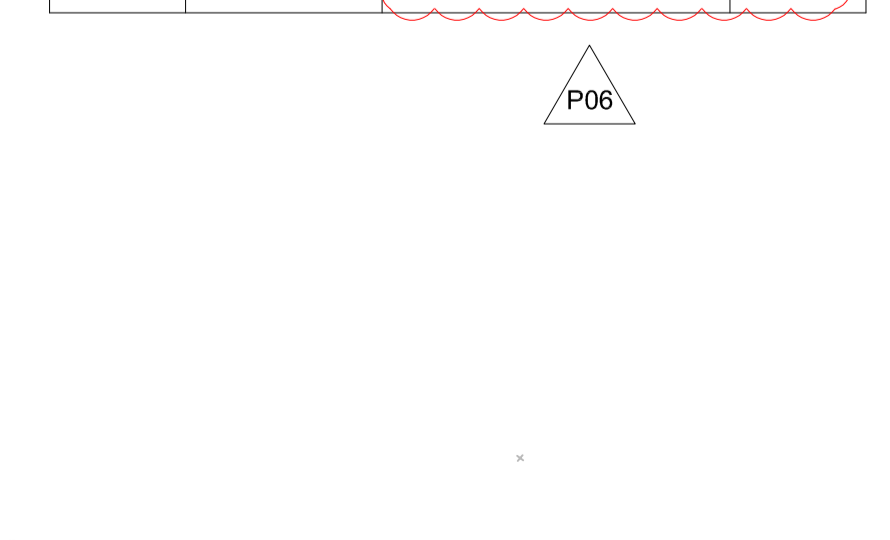
Drawing Identifier  
 Project - Originator - Zone - Level - File Type - Role - Number  
**A29-CAP-HDG-00-DR-C-0050** P06

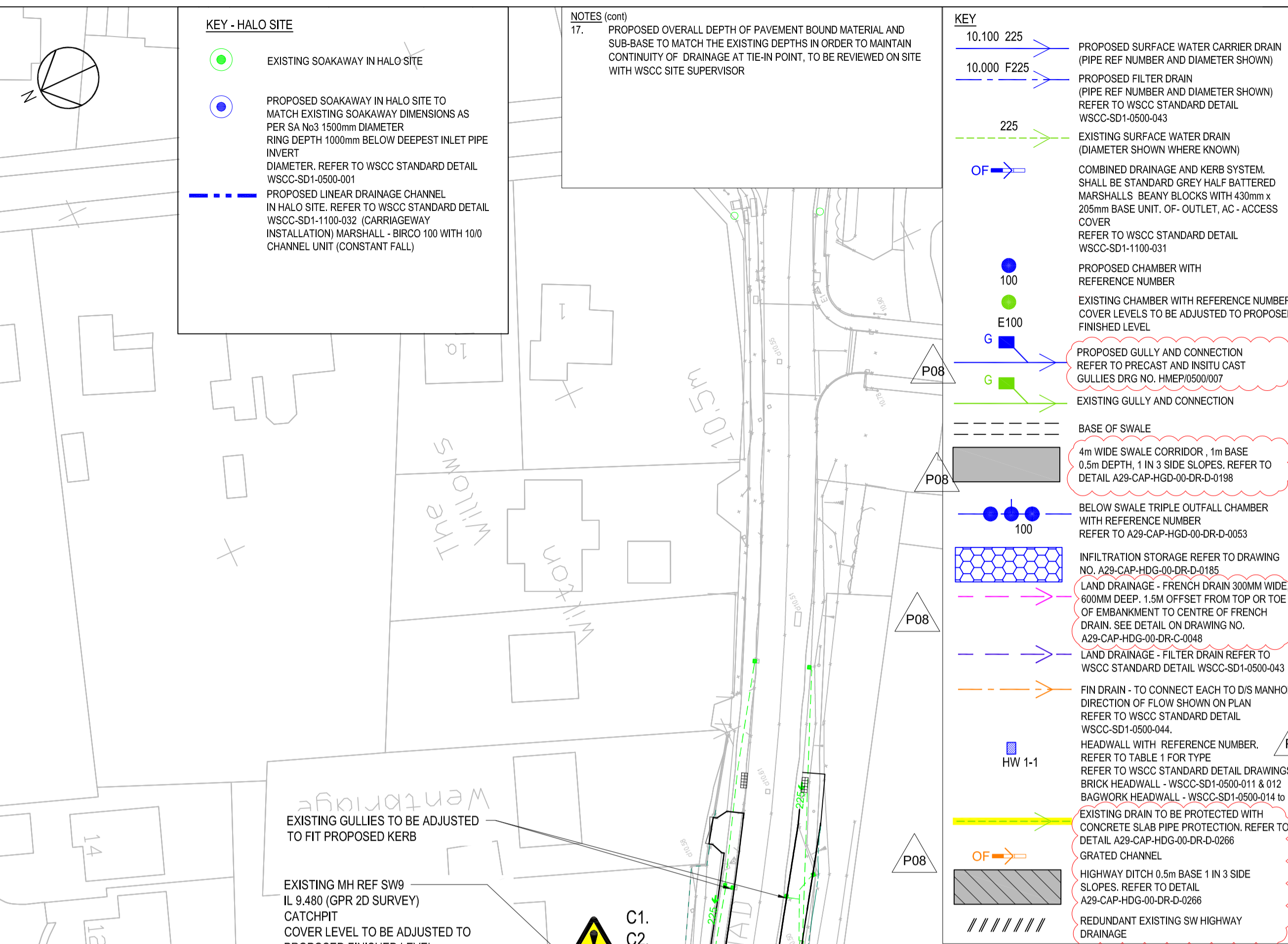
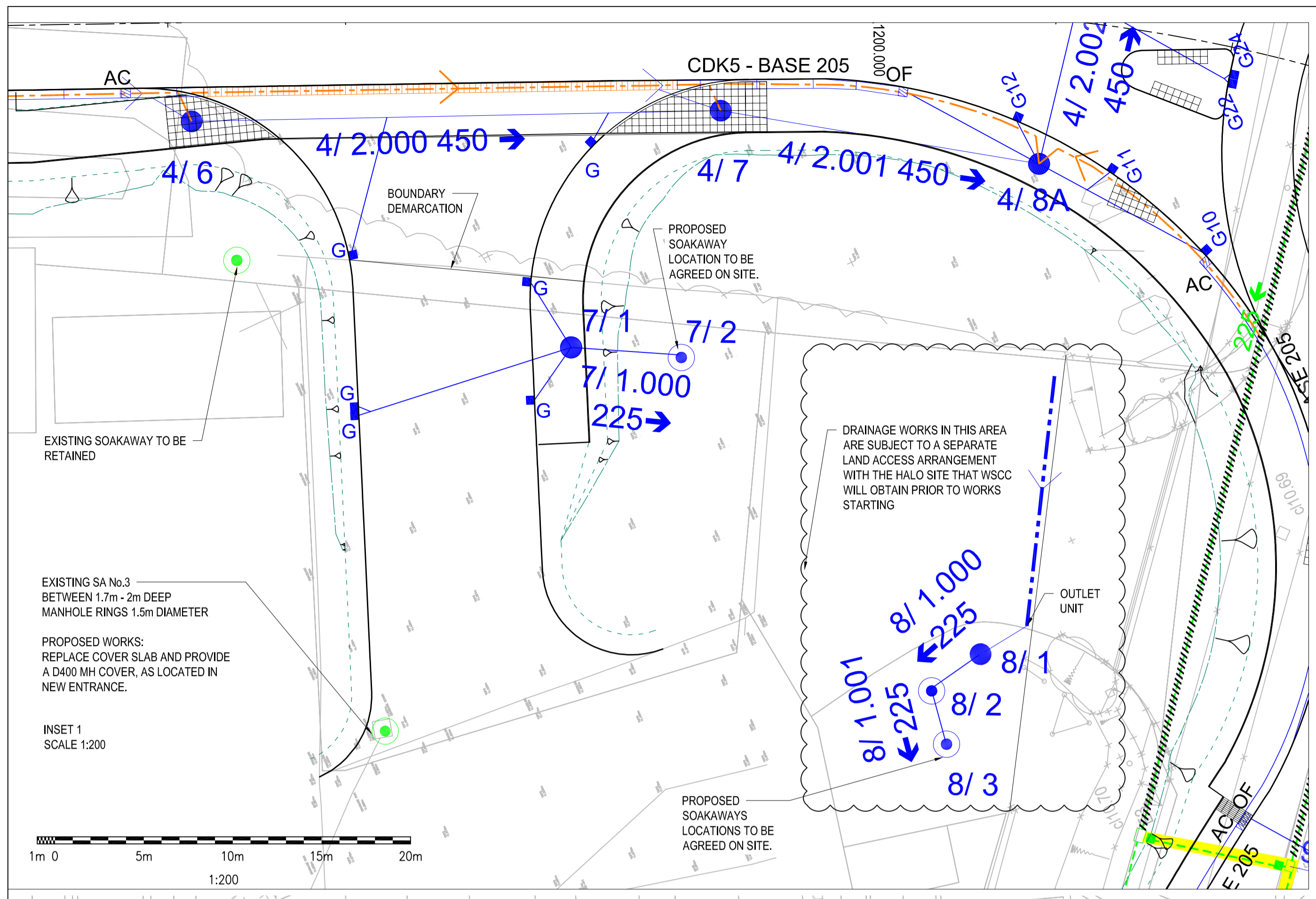
**CAPITA**

Capita House, Wood Street, East Grinstead, RH19 1UU  
 01342 327161  
 www.capitaproperty.co.uk  
 Capita Property and Infrastructure Ltd.

**TABLE 1 - HEADWALL**

REF No.	NETWORK	TYPE	IL
HW 3-4	3	TYPE C - BRICK	13.05
HW 3-5	3	TYPE C - BRICK	12.85
HW 3-6	3	TYPE A - BRICK	11.88
HW 3-7	3	TYPE C - BRICK	12.92
HW 3-8	3	TYPE C - BRICK	12.79
HW 3-9	3	TYPE C - BRICK	12.44
HW 3-10	3	TYPE C - BRICK	12.38
HW 3-11	3	TYPE C - BRICK	12.28
HW 3-12	3	TYPE G - BAGWORK	10.91
HW 3-13	3	TYPE G - BAGWORK	10.90
HW 3-14	3	DELTALOK BAGS REFER TO DRG A29-CAP-HDG-00-DR-D-0266	10.73
HW 6-1	6	DELTALOK BAGS REFER TO DRG A29-CAP-HDG-00-DR-D-0266	10.73



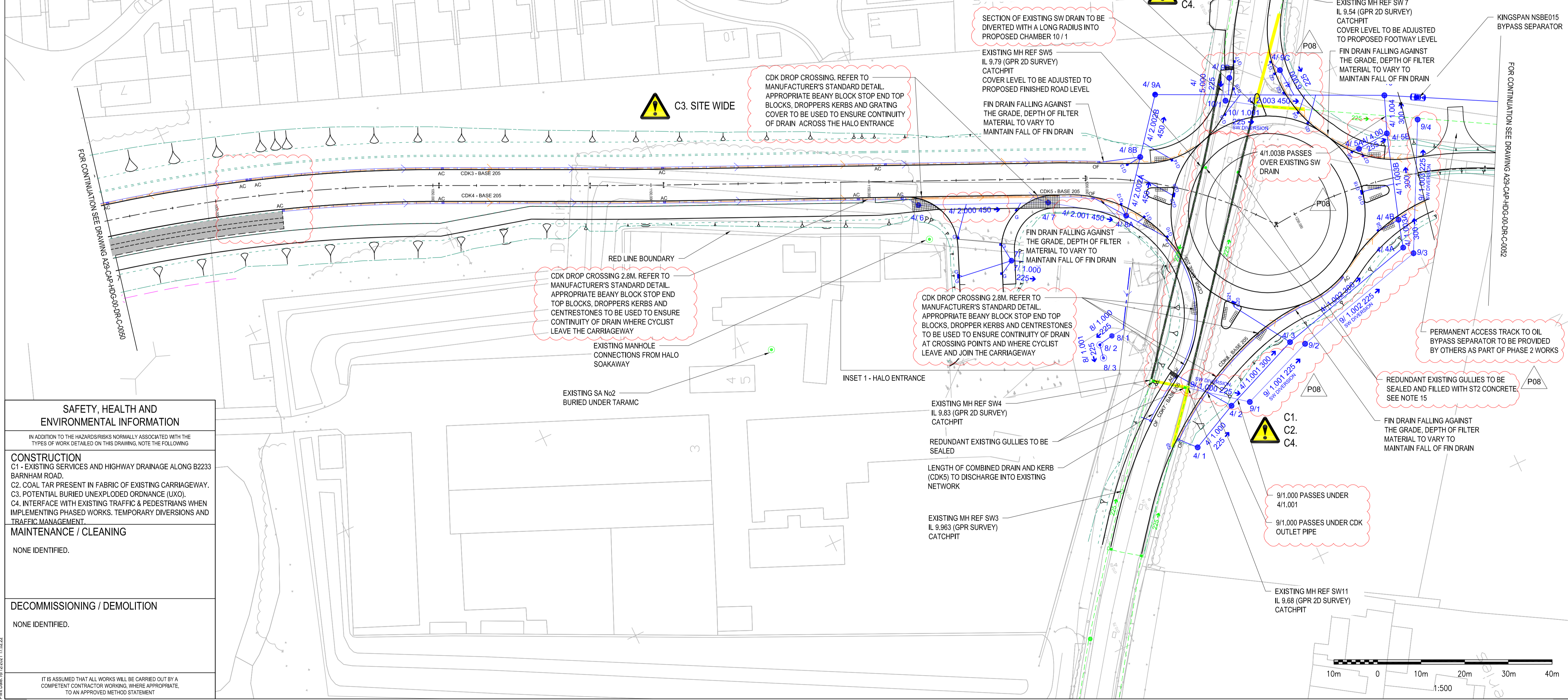


**NOTES**

- THIS DRAWING IS TO BE READ IN CONJUNCTION WITH ALL RELEVANT DRAWINGS AND SPECIFICATION APPENDIX 500 SERIES DOCUMENT NO. A29-CAP-HDG-00-DR-C-002.
- THE WORKS SHALL BE CARRIED OUT IN ACCORDANCE WITH REQUIREMENTS OF WSSC.
- ALL CHAMBERS TO BE CATCHPITS WITH 450mm SLUMP UNLESS OTHERWISE STATED.
- FOR WSSC STANDARD DETAIL REFER TO THE FOLLOWING DRAWING: FOR CATCHPIT DETAIL REFER TO TYPE 7 CHAMBER (1050 CATCHPIT) DRG NO. HCD F11. INTERNAL DIAMETER D AS SPECIFIED IN THE MANHOLE SCHEDULE.
- TYPE 1 CHAMBER (BRICK OR IN-SITU CONCRETE MANHOLE)-HCD F3 (FOR PIPES 450 MAX. DIAMETER, MAX DEPTH 1500 + PIPE DIAMETER).
- TYPE 3 CHAMBER (PRECAST CONCRETE MANHOLE)-HCD F5 (FOR PIPES 900 MAX. DIAMETER, DEPTH 1500+ TO 3000 + PIPE DIAMETER).
- TYPE 4 CHAMBER (PRECAST MANHOLE)-HCD F6 (FOR PIPES 300 TO 900 DIAMETER, DEPTHS 3000+ TO 6000 + PIPE DIAMETER).
- FOR CONTROL DISCHARGE MANHOLE DETAIL REFER TO VORTEX FLOW CONTROL TYPE B MANHOLE DRG NO. A29-CAP-HDG-00-DR-D-0266.
- FOR PROPOSED PIPE BEDDING DETAILS REFER SURFACE WARNING DRAINS TRENCH AND BEDDING DETAILS-HCD F1.
- REFER TO DOCUMENT A29-CAP-HDG-00-SH-D-0025 FOR THE DRAINAGE MANHOLE AND PIPE SCHEDULE.
- FURTHER WINTER INFILTRATION TESTING IS REQUIRED TO VALIDATE THE INFILTRATION TANK DESIGN AT FONTWELL AVENUE ROUNDABOUT. IF THE INFILTRATION RATE IS NOT ACCEPTABLE, ADDITIONAL EXCAVATION TO THE SAND LAYER, AT APPROXIMATELY 10.00M AOD, IS REQUIRED. THE ADDITIONAL EXCAVATED MATERIAL IS TO BE REPLACED WITH A SUITABLE SELECTED GRANULAR FILL MATERIAL CLASS 6A.
- ALL NEWLY PROPOSED PIPES TO BE MANUFACTURED TO SWS STIFFNESS CLASS.
- TOP OF BATTER FOR 1:3 SIDE SLOPES TO BE SAME LEVEL ON BOTH SIDES OF SWALE IN ALL LOCATIONS.
- LOCATIONS FOR CHANGES IN KERB TYPES ARE APPROXIMATE AND ARE INDICATED BY LOCATIONS OF DROP KERBS FOR CROSSINGS AND DRAINAGE SWALES AND EXACT LOCATIONS TO BE AGREED ON SITE WITH OVERSEEING ORGANISATION.
- KINGSPAN BYPASS SEPARATORS TO BE INSTALLED IN ACCORDANCE WITH MANUFACTURERS INSTALLATION AND MAINTENANCE GUIDANCE WITH SUITABLE SOLAR POWERED GSM AND BEACON ALARM SYSTEM. 300mm THICKNESS (GRADE: GEN 3 TO BS 8500-2) CONCRETE TO BASE AND SURROUND TO THE UNIT. THE EXCAVATION SHOULD BE DEWATERED USING SUITABLE PUMPING EQUIPMENT AND THIS SHOULD CONTINUE UNTIL THE INSTALLATION IS COMPLETE. IN ACCORDANCE WITH THE MANUFACTURERS INSTALLATION GUIDELINES.
- FOR CONSTRUCTION DETAILS REFER TO DRAWING A29-CAP-HDG-00-DR-D-0053, 0198 AND 0266.
- LATERAL PIPES CONNECTING TO EXISTING GULLEYS MARKED AS REDUNDANT TO BE SEALED AS PER SPECIFICATION APPENDIX 500 CLAUSE 11.
- AS A TEMPORARY SITUATION UNTIL THE SITE IS DEVELOPED WITH BARRIERS PROPOSED SUBS WHICH WILL MANAGE ALL DRAINAGE WITHIN THE SITE. A FRENCH DRAIN IS PROPOSED TO ALLOW ANY EXCESS FLOWS THAT CANNOT INFILTRATE, TO DISCHARGE TO THE SOUTH WEST SIDE OF THE A29 REALIGNMENT EMBANKMENT AS LAND DRAINAGE. AN OVERFLOW PIPE CROSSING IS PROVIDED BENEATH THE EMBANKMENT AT CHAINAGE CH 840, WHICH CONNECTS INTO THE PROPOSED DRAINAGE DITCH TO THE EXISTING BARNHAM LANE DITCH / RIFE.

Location Key Plan (Not to Scale)

Rev	Drawn	Chkd	Apprd	Description	Date
P08	AZ	KS	AB	NOTES AND KEY AMENDED SW DIMENSION PIPE RUNS	16.12.2021
				9.6.10 ADDED	
				GULLIES AMENDED AT THE HALO ENTRANCE FOR THE	27.05.2021
P07	LR	KS	AB	BOUNDARY LINE DRAINAGE DETAILS & INSET 1 ADD FOR HALO SITE	24.05.2021
P05	AZ	KS	AB	NOTE 15 AMENDED	08.04.2021
P04	JB	KS	AB	CLIENTS COMMENTS ADDRESSED	08.03.2021
P03	JB	KS	AB	ADDRESS WSSC COMMENTS, FIN AND LAND DRAINAGE	27.11.2020
				ADDED: KERB DETAILS SHOWN ON NEW DRAWINGS	31.07.2020
P02	LR	AZ	KS	MODELS	07.07.2020
P01	PD	RP	KS	FIRST ISSUE	



Rev: P08, AZ, KS, AB, 16.12.2021

Rev: P07, LR, KS, AB, 27.05.2021

Rev: P05, AZ, KS, AB, 08.04.2021

Rev: P04, JB, KS, AB, 08.03.2021

Rev: P03, JB, KS, AB, 27.11.2020

Rev: P02, LR, AZ, KS, 31.07.2020

Rev: P01, PD, RP, KS, 07.07.2020

Purpose of Issue: For Acceptance

Classification: Commercial In Confidence

Client: west sussex council, Jackson

Project: A29 Realignment Scheme

Drawing: Drainage Layout Plan, Sheet 4 of 5

Scale @ A1	Drawn	Checked	Approved
1:500	PD	RP	KS

Project No: CS099505, Date: 02.07.20

Drawing Identifier: A29-CAP-HDG-00-DR-C-0051, BS1192 Compliant, P08

**CAPITA**

Capita House, Wood Street, East Grinstead, RH19 1UJ  
01342 327161  
www.capitaproperty.co.uk  
Capita Property and Infrastructure Ltd.

**SAFETY, HEALTH AND ENVIRONMENTAL INFORMATION**

IN ADDITION TO THE HAZARDS/RISKS NORMALLY ASSOCIATED WITH THE TYPES OF WORK DETAILED ON THIS DRAWING, NOTE THE FOLLOWING:

CONSTRUCTION
C1 - EXISTING SERVICES AND HIGHWAY DRAINAGE ALONG B2233 BARNHAM ROAD.
C2. COAL TAR PRESENT IN FABRIC OF EXISTING CARRIAGEWAY.
C3. POTENTIAL BURIED UNEXPLODED ORDNANCE (UXO).
C4. INTERFACE WITH EXISTING TRAFFIC & PEDESTRIANS WHEN IMPLEMENTING PHASED WORKS. TEMPORARY DIVERSIONS AND TRAFFIC MANAGEMENT.

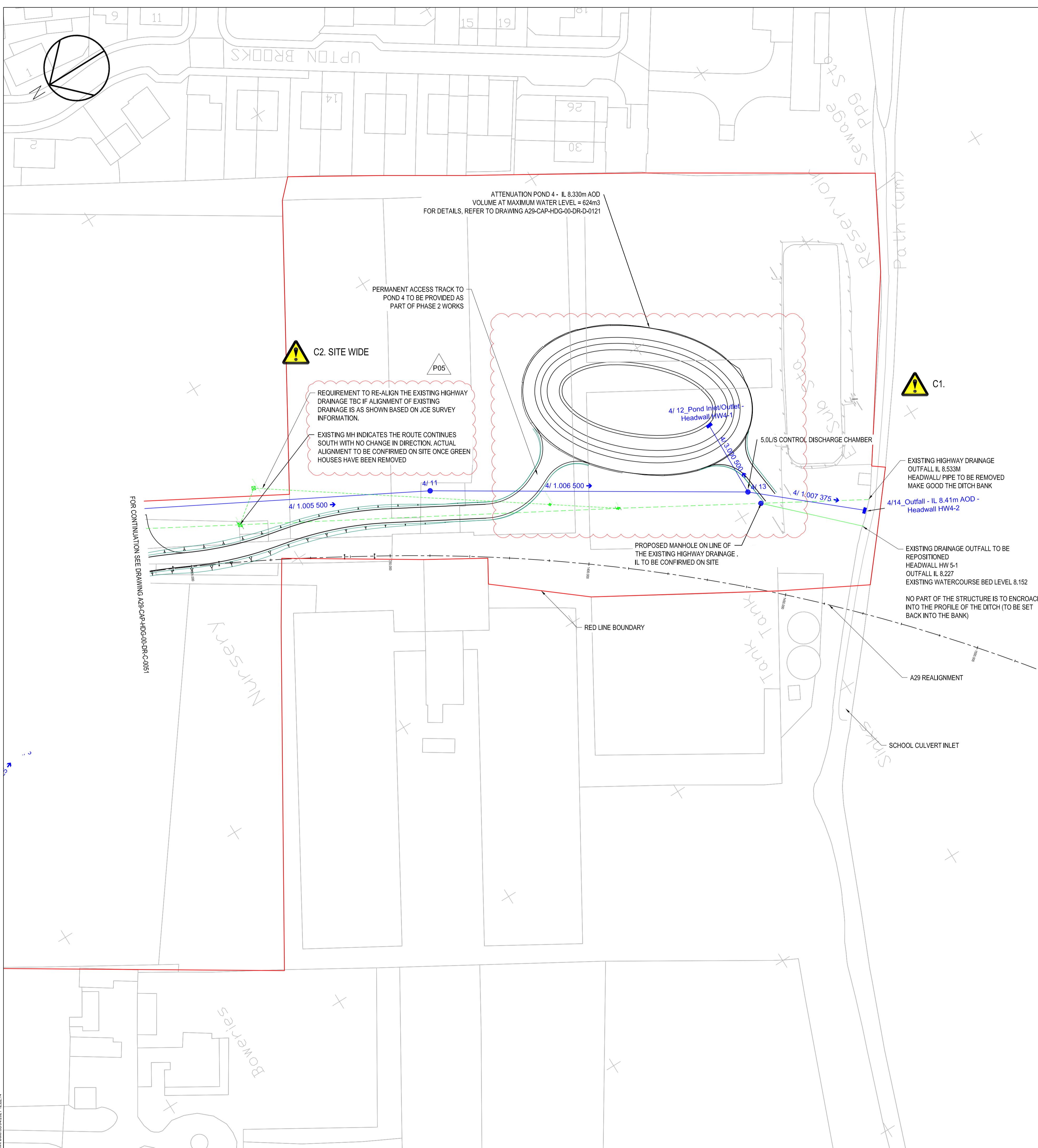
**MAINTENANCE / CLEANING**

NONE IDENTIFIED.

DECOMMISSIONING / DEMOLITION
NONE IDENTIFIED.

IT IS ASSUMED THAT ALL WORKS WILL BE CARRIED OUT BY A COMPETENT CONTRACTOR WORKING WHERE APPROPRIATE, TO AN APPROVED METHOD STATEMENT

© Capita Property and Infrastructure Ltd. F:\Highways\CS099505\A29\03 Delivery\HDG Drainage\03 Drawings\A29-CAP-HDG-00-DR-C-SHEETS\0048-0052.dwg



**SAFETY, HEALTH AND ENVIRONMENTAL INFORMATION**

IN ADDITION TO THE HAZARDS/RISKS NORMALLY ASSOCIATED WITH THE TYPES OF WORK DETAILED ON THIS DRAWING, NOTE THE FOLLOWING

**CONSTRUCTION**

C1. EXISTING SERVICES IN THE NURSERY AREA INCLUDING 2No. ELECTRICITY SUBSTATIONS.  
C2. POTENTIAL BURIED UNEXPLODED ORDNANCE (UXO).

**MAINTENANCE / CLEANING**

NONE IDENTIFIED.

**DECOMMISSIONING / DEMOLITION**

NONE IDENTIFIED.

IT IS ASSUMED THAT ALL WORKS WILL BE CARRIED OUT BY A COMPETENT CONTRACTOR WORKING, WHERE APPROPRIATE, TO AN APPROVED METHOD STATEMENT

HEADWALL

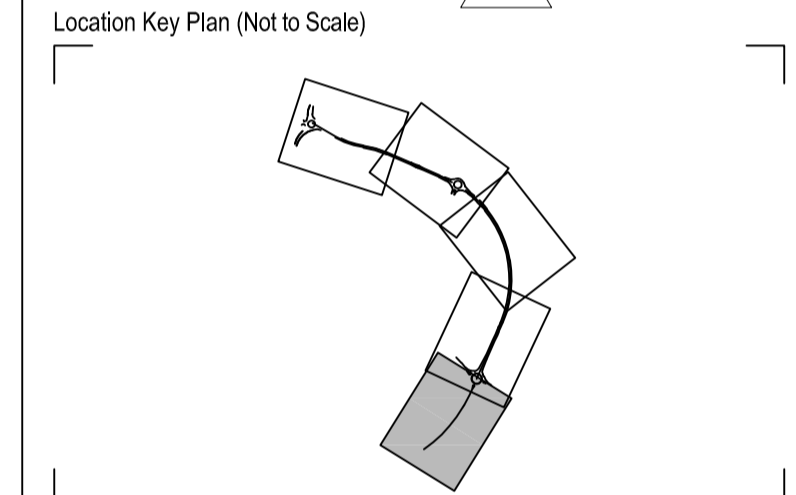
REF No.	NETWORK.	TYPE.
HW 4-1	4	BAGWORK
HW 4-2	4	BRICK
HW 5-1	REPOSITIONED EX HIGHWAY DRAINAGE	BRICK

TABLE 1

**KEY**

- 10.100 225 → PROPOSED SURFACE WATER CARRIER DRAIN (PIPE REF NUMBER AND DIAMETER SHOWN)
- 10.000 F225 → PROPOSED FILTER DRAIN (PIPE REF NUMBER AND DIAMETER SHOWN) REFER TO WSCC STANDARD DETAIL WSCC-SD1-0500-043
- 225 → EXISTING SURFACE WATER DRAIN (DIAMETER SHOWN WHERE KNOWN)
- OF → COMBINED DRAINAGE AND KERB SYSTEM. SHALL BE STANDARD GREY HALF BATTERED MARSHALLS BEANY BLOCKS WITH 430mm x 205mm BASE UNIT. OF-OUTLET, AC- ACCESS COVER
- 100 → PROPOSED CHAMBER WITH REFERENCE NUMBER
- E100 → EXISTING CHAMBER WITH REFERENCE NUMBER COVER LEVELS TO BE ADJUSTED TO PROPOSED FINISHED LEVEL
- G → PROPOSED GULLY AND CONNECTION REFER TO PRECAST AND INSITU CAST GULLIES DRG NO. HME0500007
- G → EXISTING GULLY AND CONNECTION
- BASE OF SWALE
- 4m WIDE SWALE CORRIDOR, 1m BASE 0.5m DEPTH, 1 IN 3 SIDE SLOPES. REFER TO WSCC STANDARD DETAIL S2783826 FOR THE SWALE AND A29-CAP-HDG-00-DR-D-0188
- 100 → BELOW SWALE TRIPLE OUTFALL CHAMBER WITH REFERENCE NUMBER REFER TO A29-CAP-HDG-00-DR-D-0053
- INFLTRATION STORAGE REFER TO DRAWING NO. A29-CAP-HDG-00-DR-D-0185
- LAND DRAINAGE - FRENCH DRAIN 300MM WIDE, 600MM DEEP, 1.5M OFFSET FROM TOP OR TOE OF EMBANKMENT. SEE DETAIL ON DRAWING NO. A29-CAP-HDG-00-DR-C-0048
- LAND DRAINAGE - FILTER DRAIN REFER TO WSCC STANDARD DETAIL WSCC-SD1-0500-043
- FIN DRAIN - TO CONNECT EACH TO DIS MANHOLE DIRECTION OF FLOW SHOWN ON PLAN REFER TO WSCC STANDARD DETAIL WSCC-SD1-0500-044
- HEADWALL WITH REFERENCE NUMBER. REFER TO TABLE 1 FOR TYPE REFER TO WSCC STANDARD DETAIL DRAWINGS BRICK HEADWALL - WSCC-SD1-0500-011 & 012 BAGWORK HEADWALL - WSCC-SD1-0500-014 to 016
- EXISTING DRAIN TO BE PROTECTED WITH CONCRETE SURROUND. WSCC STANDARD DETAIL S2783833 TYPE Z
- PROPOSED OVERALL DEPTH OF PAVEMENT BOUND MATERIAL AND SUB-BASE TO MATCH THE EXISTING DEPTHS IN ORDER TO MAINTAIN CONTINUITY OF DRAINAGE AT TIE-IN POINT. TO BE REVIEWED ON SITE WITH WSCC SITE SUPERVISOR
- GRAVED CHANNEL
- HIGHWAY DITCH 0.5m BASE 1 IN 3 SIDE SLOPES. REFER TO WSCC STANDARD DETAILS S2783825

- NOTES**
- THIS DRAWING IS TO BE READ IN CONJUNCTION WITH ALL RELEVANT DRAWINGS AND SPECIFICATION APPENDIX 500 SERIES DOCUMENT NO A29-CAP-GEN-00-SP-C-0032
  - THE WORKS SHALL BE CARRIED OUT IN ACCORDANCE WITH REQUIREMENTS OF WSCC
  - ALL CHAMBERS TO BE CATCHPITS WITH 450mm SUMP UNLESS OTHERWISE STATED
  - FOR WSCC STANDARD DETAIL REFER TO THE FOLLOWING DRAWINGS:  
a. FOR CATCHPIT DETAIL REFER TO TYPE 7 CHAMBER (1050 CATCHPIT) DRG NO. ICD F11. INTERNAL DIAMETER D AS SPECIFIED IN THE MANHOLE SCHEDULE  
b. TYPE 1 CHAMBER (BRICK OR IN-SITU CONCRETE MANHOLE)-HCD F3  
c. TYPE 3 CHAMBER (PRECAST CONCRETE MANHOLE)-HCD F5  
d. TYPE 4 CHAMBER (PRECAST MANHOLE)-HCD F6  
e. FOR CONTROL DISCHARGE MANHOLE DETAIL REFER TO VORTEX FLOW CONTROL TYPE B MANHOLE DRG NO. S2783814 REV A  
f. FOR PROPOSED PIPE BEDDING DETAILS REFER TO PIPE BEDDING DETAILS DRG NO. WSCC S2783833 REV A  
g. REFER TO DOCUMENT A29-CAP-HDG-00-SH-D-0025 FOR THE DRAINAGE MANHOLE AND PIPE SCHEDULE
  - INFLTRATION RATES AT THE INVERT LEVELS OF THE CELLULAR STORAGE UNITS ARE TO BE CONFIRMED ON SITE IN JANUARY 2021. IF THE INFLTRATION RATE IS NOT ACCEPTABLE, ADDITIONAL EXCAVATION TO THE SAND LAYER, AT APPROXIMATELY 10.30M AOD, IS REQUIRED. THE ADDITIONAL EXCAVATED MATERIAL IS TO BE REPLACED WITH A SUITABLE SELECTED GRANULAR FILL MATERIAL, CLASS 6A
  - EXISTING DRAINAGE MH CL AND IL PROVIDED FROM THE GPR SURVEY UNDERTAKEN BY MACLEOD SWIMMONDS GEOSPATIAL SURVEYS IN AUGUST 2020. REFER TO DRAWING NO 3 MSLD201451-01 SHEETS 1 TO 15
  - GULLY OUTLET PIPES CONNECTING TO CARRIER DRAINS SHALL BE 150MM DIAMETER PIPES IN ACCORDANCE WITH WSCC STANDARD DETAIL S2783811. OUTLET PIPES FOR DOUBLE GULLIES SHALL BE 225mm DIAMETER
  - COMBINED DRAINAGE AND KERB SYSTEM OUTLET PIPES CONNECTING TO CARRIER DRAINS SHALL BE 150MM DIAMETER PIPES IN ACCORDANCE WITH MANUFACTURERS OUTFALL TYPES
  - PIPE SIZES AND DESIGN BASED UPON POLYPIPE RIGIDRAIN PRODUCT ALL NEWLY PROPOSED PIPES TO BE MANUFACTURED TO SNE STIFFNESS CLASS.
  - TOP OF BATTER FOR 1:3 SIDE SLOPES TO BE SAME LEVEL ON BOTH SIDES OF SWALE IN ALL LOCATIONS.
  - LOCATIONS FOR CHANGES IN KERB TYPES ARE APPROXIMATE AND ARE DICTATED BY LOCATIONS OF DROP KERBS FOR CROSSINGS AND DRAINAGE SWALES AND EXACT LOCATIONS TO BE AGREED ON SITE WITH OVERSEEING ORGANISATION.
  - KINGSPIAN BYPASS SEPARATORS TO BE INSTALLED IN ACCORDANCE WITH MANUFACTURERS INSTALLATION AND MAINTENANCE GUIDANCE WITH SUITABLE SOLAR POWERED GSM AND BEACON ALARM SYSTEM. 300mm THICKNESS (GRADE: GEN 3 TO BS 8500-2) CONCRETE SURROUND TO THE UNIT. HIGH GROUND WATER LEVEL TO BE MANAGED DURING INSTALLATION. FOR CONSTRUCTION DETAILS REFER TO DRAWING A29-CAP-HDG-00-DR-D-0053 AND 0188.
  - LATERAL PIPES CONNECTING TO EXISTING GULLEYS MARKED AS REDUNDANT TO BE SEALED
  - AS A TEMPORARY SITUATION UNTILL THE SITE IS DEVELOPED WITH BARRIERS PROPOSED SUBS (WHICH WILL MANAGE ALL DRAINAGE WITHIN THE SITE), A FRENCH DRAIN IS PROPOSED TO ALLOW ANY EXCESS FLOWS THAT CANNOT INFILTRATE, TO DISCHARGE TO THE SOUTH WEST SIDE OF THE A29 REALIGNMENT EMBANKMENT AS LAND DRAINAGE. AN OVERFLOW PIPE CROSSING IS PROVIDED BENEATH THE EMBANKMENT AT CHANAGE CH 840, WHICH CONNECTS INTO THE PROPOSED DRAINAGE DITCH TO THE EXISTING BARNHAM LANE DITCH / RIFE
  - PROPOSED OVERALL DEPTH OF PAVEMENT BOUND MATERIAL AND SUB-BASE TO MATCH THE EXISTING DEPTHS IN ORDER TO MAINTAIN CONTINUITY OF DRAINAGE AT TIE-IN POINT. TO BE REVIEWED ON SITE WITH WSCC SITE SUPERVISOR



Rev	Drawn	Checked	App'd	Description	Date
P05	AZ	KS	AB	POND ROTATED AND MOVED. NOTE 13 AMENDED.	08.04.2021
P04	JB	KS	AB	CLIENT COMMENTS ADDRESSED	08.03.2021
P03	JB	KS	AB	ADDRESS WSCC COMMENTS. KERB DETAILS SHOWN ON NEW DRAWINGS	27.11.2020
P02	LR	AZ	KS	UPDATED MODELS	31.07.2020
P01	PD	RP	KS	FIRST ISSUE	07.07.2020

Purpose of Issue  
**For Review and Comment S3**

Classification  
**Commercial In Confidence**

Client

Project  
**A29 Realignment Scheme**

Drawing  
**Drainage Layout Plan  
Sheet 5 of 5**

Scale @ A1	Drawn	Checked	Approved
1:500	PD	RP	KS

Project No.	Date
CS099505	02.07.20

Drawing Identifier  
Project - Originator - Zone - Level - File Type - Role - Number  
A29-CAP-HDG-00-DR-C-0052  
851192 Compliant  
revision  
P05



Capita House, Wood Street, East Grinstead, RH19 1UJ  
01342 327161  
www.capitaproperty.co.uk  
Capita Property and Infrastructure Ltd.

