

Key

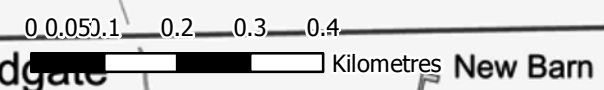
- Study Area
- Red Line Boundary
- Proposed Scheme
- ⊗ Noise Survey Locations
- Residential Receptors
- Other Sensitive Receptors



TITLE:
A29 REALIGNMENT

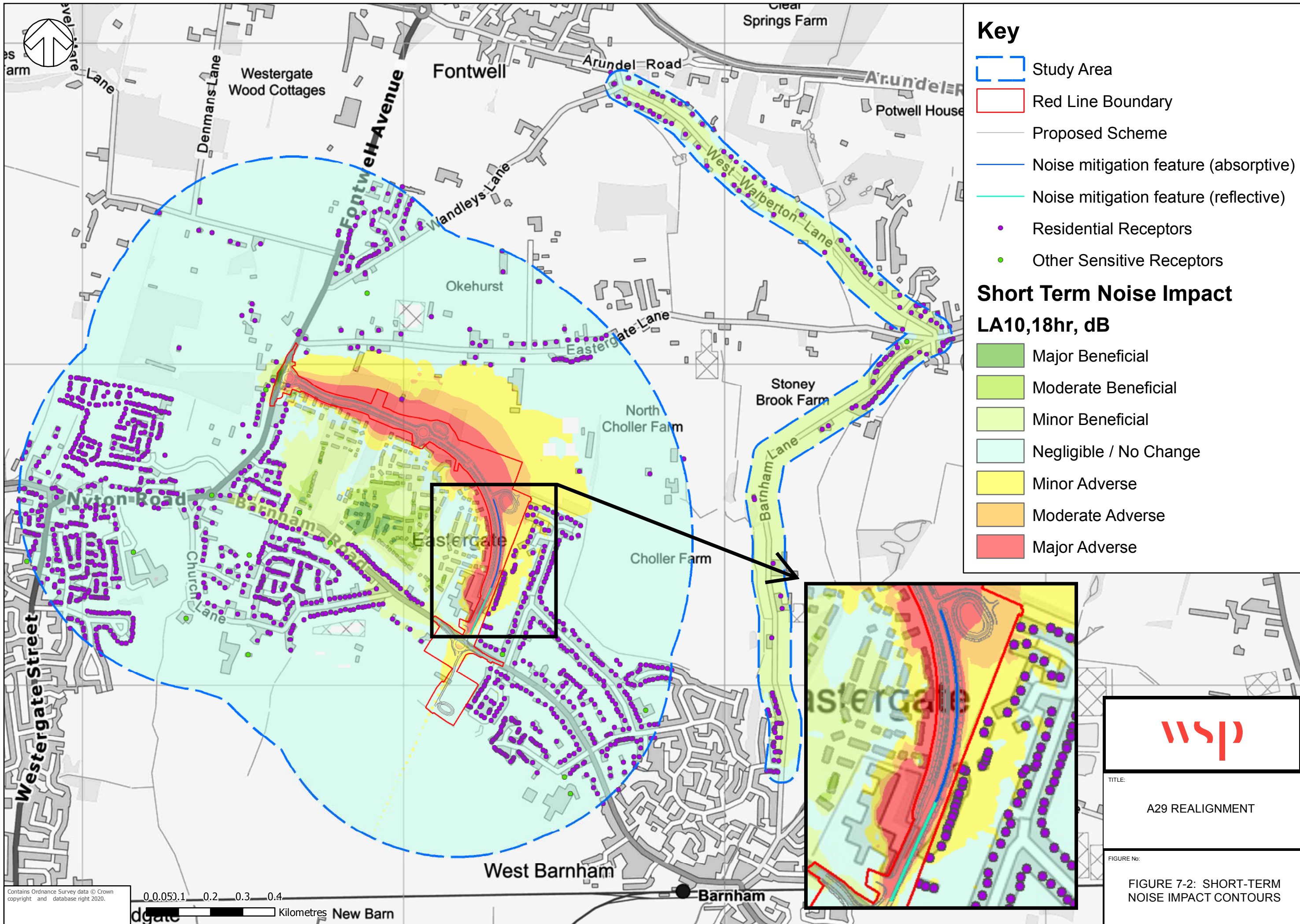
FIGURE No:
FIGURE 7-1: NOISE ASSESSMENT STUDY AREA, SENSITIVE RECEPTORS AND NOISE SURVEY LOCATIONS

Contains Ordnance Survey data © Crown copyright and database right 2020.



Westergate

New Barn



Key

- Study Area
- Red Line Boundary
- Proposed Scheme
- Noise mitigation feature (absorptive)
- Noise mitigation feature (reflective)
- Residential Receptors
- Other Sensitive Receptors

Short Term Noise Impact LA10,18hr, dB

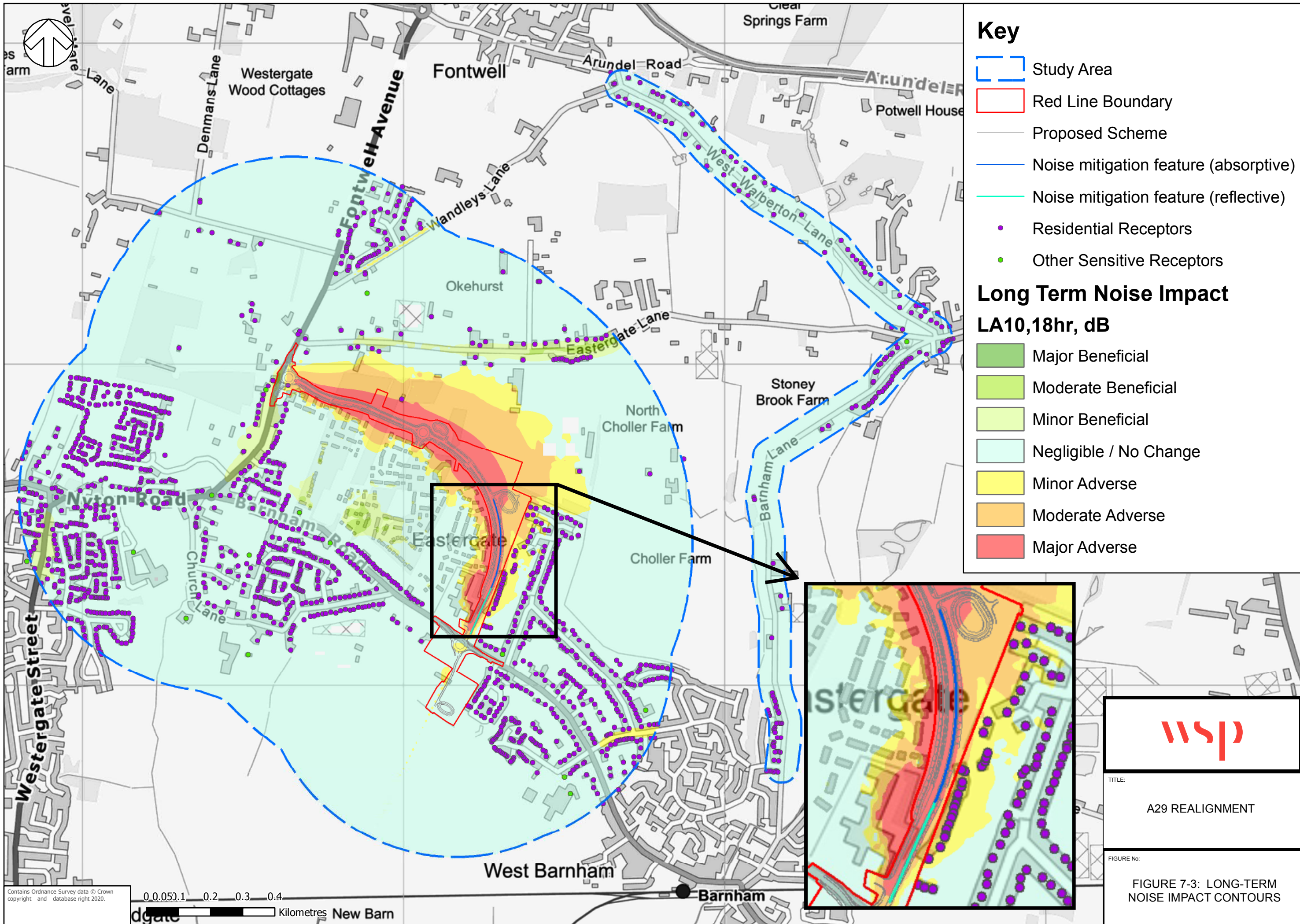
- Major Beneficial
- Moderate Beneficial
- Minor Beneficial
- Negligible / No Change
- Minor Adverse
- Moderate Adverse
- Major Adverse

Contains Ordnance Survey data © Crown copyright and database right 2020.

0.0 0.05 0.1 0.2 0.3 0.4 Kilometres

TITLE:
A29 REALIGNMENT

FIGURE No:
FIGURE 7-2: SHORT-TERM NOISE IMPACT CONTOURS



Key


- Study Area
- Red Line Boundary
- Proposed Scheme
- Noise mitigation feature (absorptive)
- Noise mitigation feature (reflective)
- Residential Receptors
- Other Sensitive Receptors

Long Term Noise Impact LA10,18hr, dB

- Major Beneficial
- Moderate Beneficial
- Minor Beneficial
- Negligible / No Change
- Minor Adverse
- Moderate Adverse
- Major Adverse

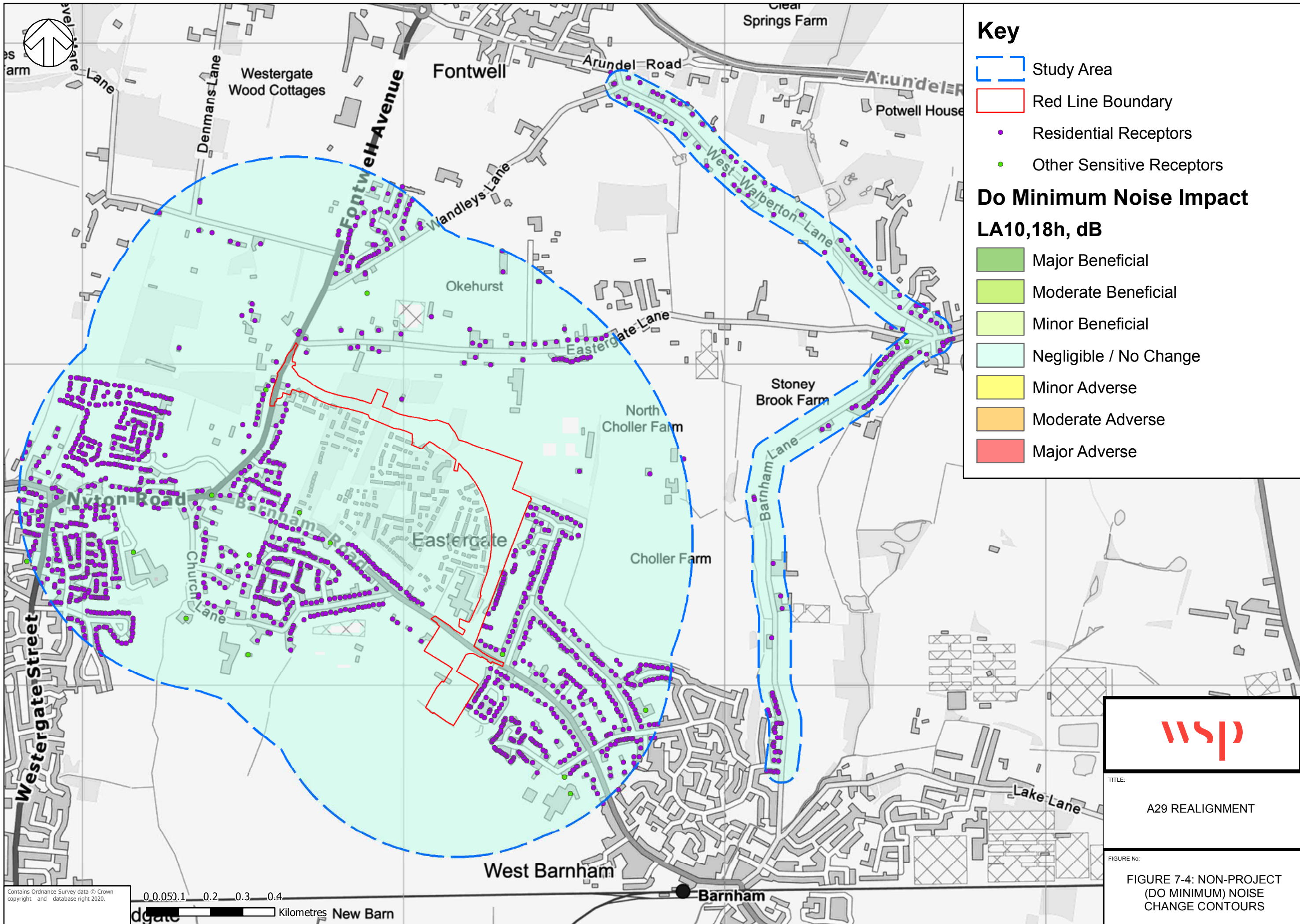
Contains Ordnance Survey data © Crown copyright and database right 2020.

0.0 0.05 0.1 0.2 0.3 0.4 Kilometres



TITLE:
A29 REALIGNMENT

FIGURE No:
FIGURE 7-3: LONG-TERM NOISE IMPACT CONTOURS




Key

- Study Area
- Red Line Boundary
- Residential Receptors
- Other Sensitive Receptors

Do Minimum Noise Impact LA10,18h, dB

- Major Beneficial
- Moderate Beneficial
- Minor Beneficial
- Negligible / No Change
- Minor Adverse
- Moderate Adverse
- Major Adverse

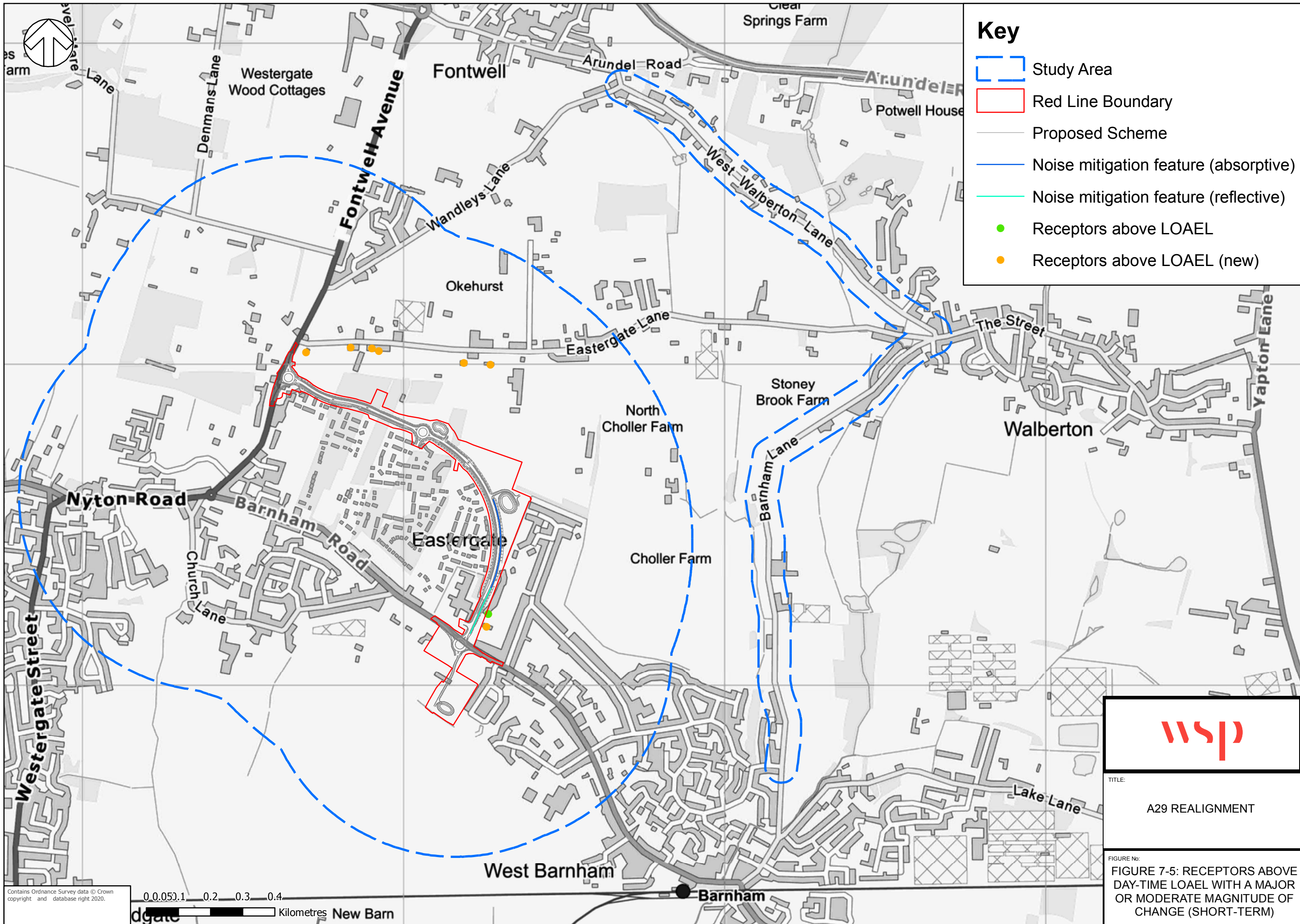


TITLE:
A29 REALIGNMENT

FIGURE No:
FIGURE 7-4: NON-PROJECT
(DO MINIMUM) NOISE
CHANGE CONTOURS

Contains Ordnance Survey data © Crown copyright and database right 2020.

0.0 0.05 0.1 0.2 0.3 0.4
Kilometres



TITLE

A29 REALIGNMENT

FIGURE No:

FIGURE 7-5: RECEPTORS ABOVE DAY-TIME LOAEL WITH A MAJOR OR MODERATE MAGNITUDE OF CHANGE (SHORT-TERM)