

495200

495200

495400



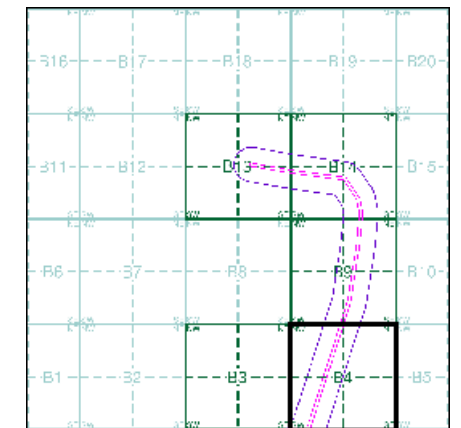
### Historical Aerial Photography

Published 1999

This aerial photography was produced by Getmapping, these vertical aerial photographs provide a seamless, full colour survey of the whole of Great Britain



### Historical Aerial Photography - Segment B4



### Order Details

Order Number: 157366589\_1\_1  
 Customer Ref: A29 Realignment Route  
 National Grid Reference: 495050, 105440  
 Slice: B  
 Site Area (Ha): 9.04  
 Search Buffer (m): 100

### Site Details

A29 Realignment Route, Shripney, West Sussex



Tel: 0844 844 9952  
 Fax: 0844 844 9951  
 Web: www.envirocheck.co.uk

# Historical Mapping Legends

## Ordnance Survey County Series 1:10,560

- Gravel Pit
- Sand Pit
- Other Pits
- Quarry
- Shingle
- Orchard
- Osiers
- Reeds
- Marsh
- Mixed Wood
- Deciduous
- Brushwood
- Fir
- Furze
- Rough Pasture
- Arrow denotes flow of water
- Trigonometrical Station
- Site of Antiquities
- Bench Mark
- Pump, Guide Post, Signal Post
- Well, Spring, Boundary Post
- 285** Surface Level
- Sketched Contour
- Instrumental Contour
- Main Roads
- Minor Roads
- Sunken Road
- Raised Road
- Road over Railway
- Railway over River
- Railway over Road
- Level Crossing
- Road over River or Canal
- Road over Stream
- Road over Stream
- County Boundary (Geographical)
- County & Civil Parish Boundary
- Administrative County & Civil Parish Boundary
- County Borough Boundary (England)
- County Burgh Boundary (Scotland)
- Rural District Boundary
- Civil Parish Boundary

## Ordnance Survey Plan 1:10,000

- Chalk Pit, Clay Pit or Quarry
- Gravel Pit
- Sand Pit
- Disused Pit or Quarry
- Refuse or Slag Heap
- Lake, Loch or Pond
- Dunes
- Boulders
- Coniferous Trees
- Non-Coniferous Trees
- Orchard
- Scrub
- Coppice
- Bracken
- Heath
- Rough Grassland
- Marsh
- Reeds
- Saltings
- Building
- Glasshouse
- Sloping Masonry
- Pylon
- Electricity Transmission Line
- Pole
- Cutting
- Embankment
- Standard Gauge Multiple Track
- Standard Gauge Single Track
- Siding, Tramway or Mineral Line
- Narrow Gauge
- Geographical County
- Administrative County, County Borough or County of City
- Municipal Borough, Urban or Rural District, Burgh or District Council
- Borough, Burgh or County Constituency
- Civil Parish
- BP, BS** Boundary Post or Stone
- Ch** Church
- CH** Club House
- F E Sta** Fire Engine Station
- FB** Foot Bridge
- Fn** Fountain
- GP** Guide Post
- MP** Mile Post
- MS** Mile Stone
- Pol Sta** Police Station
- PO** Post Office
- PC** Public Convenience
- PH** Public House
- SB** Signal Box
- Spr** Spring
- TCB** Telephone Call Box
- TCP** Telephone Call Post
- W** Well

## 1:10,000 Raster Mapping

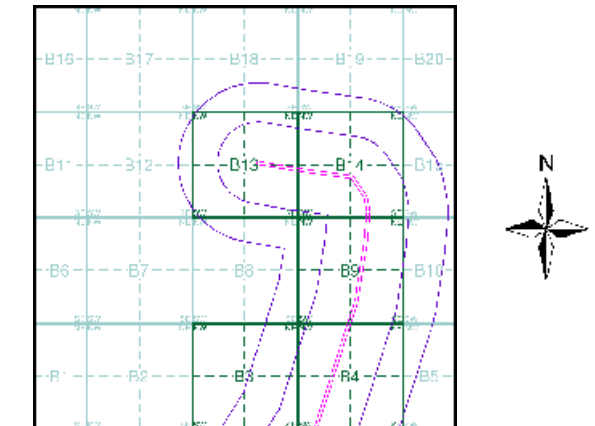
- Gravel Pit
- Rock
- Boulders
- Shingle
- Sand
- Slopes
- Refuse tip or slag heap
- Rock (scattered)
- Boulders (scattered)
- Mud
- Sand Pit
- Top of cliff
- General detail
- Overhead detail
- Multi-track railway
- County boundary (England only)
- District, Unitary, Metropolitan, London Borough boundary
- Underground detail
- Narrow gauge railway
- Single track railway
- Civil, parish or community boundary
- Constituency boundary
- Area of wooded vegetation
- Non-coniferous trees
- Non-coniferous trees (scattered)
- Coniferous trees
- Coniferous trees (scattered)
- Orchard
- Rough Grassland
- Scrub
- Water feature
- Mean high water (springs)
- Telephone line (where shown)
- Bench mark (where shown)
- Point feature (e.g. Guide Post or Mile Stone)
- Site of (antiquity)
- General Building
- Non-coniferous trees
- Coniferous trees
- Positioned tree
- Coppice or Osiers
- Heath
- Marsh, Salt Marsh or Reeds
- Flow arrows
- Mean low water (springs)
- Electricity transmission line (with poles)
- Triangulation station
- Pylon, flare stack or lighting tower
- Glasshouse
- Important Building



## Historical Mapping & Photography included:

Mapping Type	Scale	Date	Pg
Sussex	1:10,560	1880	2
Sussex	1:10,560	1899	3
Sussex	1:10,560	1913 - 1914	4
Sussex	1:10,560	1913 - 1914	5
Sussex	1:10,560	1913 - 1914	6
Sussex	1:10,560	1914	7
Sussex	1:10,560	1938 - 1951	8
Sussex	1:10,560	1951	9
Ordnance Survey Plan	1:10,000	1961 - 1962	10
Ordnance Survey Plan	1:10,000	1967	11
Ordnance Survey Plan	1:10,000	1970 - 1979	12
Ordnance Survey Plan	1:10,000	1979	13
Ordnance Survey Plan	1:10,000	1980	14
Ordnance Survey Plan	1:10,000	1992 - 1993	15
10K Raster Mapping	1:10,000	2000	16
10K Raster Mapping	1:10,000	2006	17
VectorMap Local	1:10,000	2018	18

## Historical Map - Slice B



## Order Details

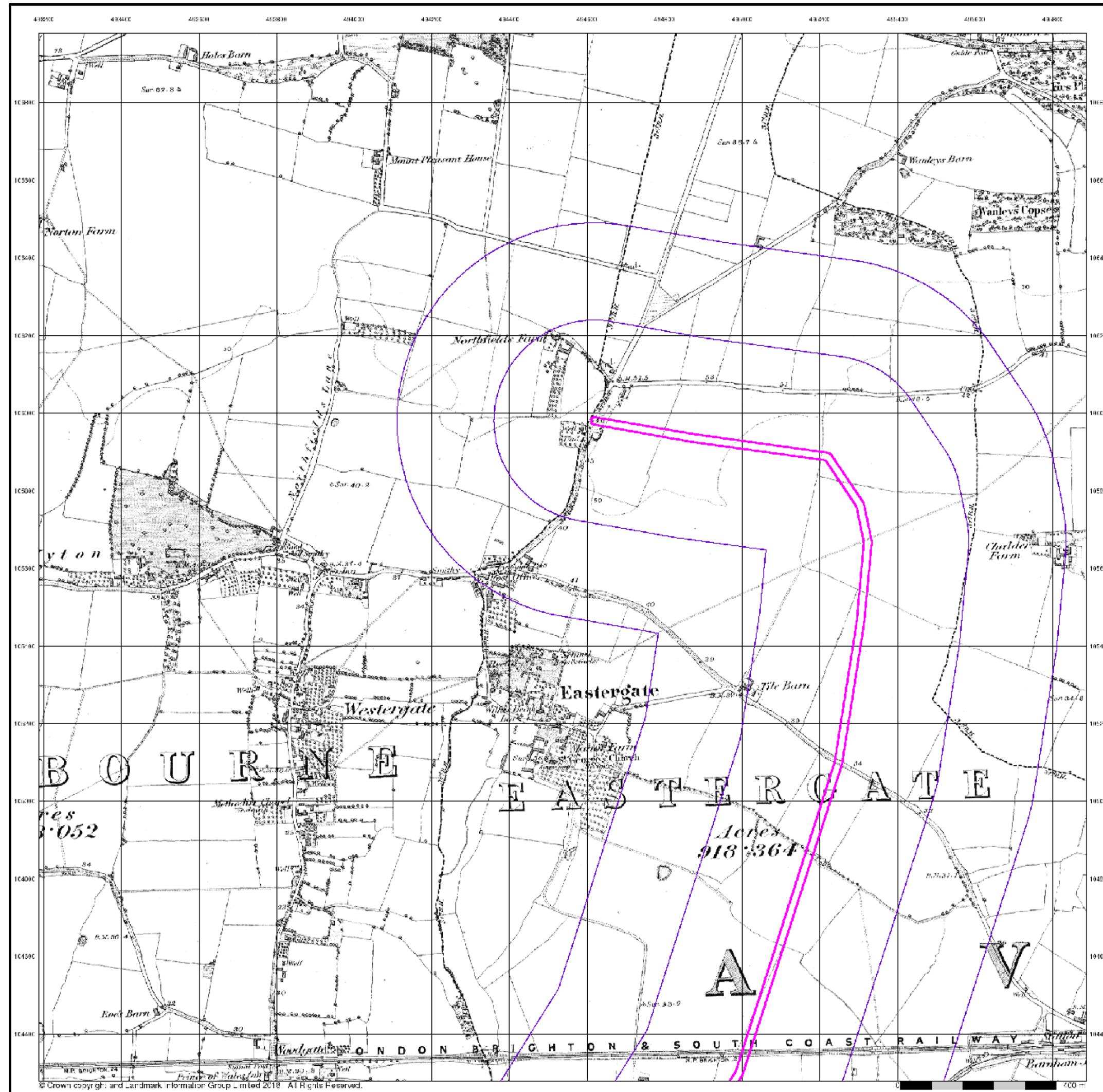
Order Number: 157366589\_1\_1  
 Customer Ref: A29 Realignment Route  
 National Grid Reference: 495050, 105440  
 Slice: B  
 Site Area (Ha): 9.04  
 Search Buffer (m): 500

## Site Details

A29 Realignment Route, Shripney, West Sussex



Tel: 0844 844 9952  
 Fax: 0844 844 9951  
 Web: www.envirocheck.co.uk



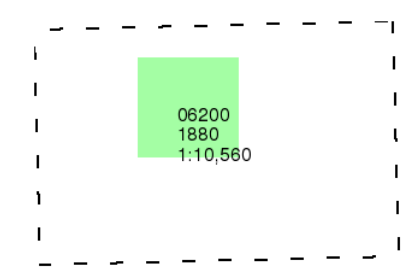
Sussex

Published 1880

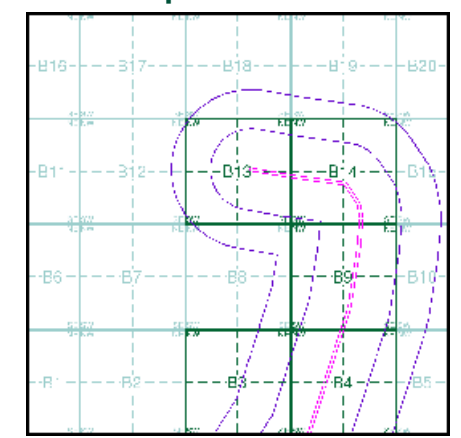
Source map scale - 1:10,560

The historical maps shown were reproduced from maps predominantly held at the scale adopted for England, Wales and Scotland in the 1840's. In 1854 the 1:2,500 scale was adopted for mapping urban areas; these maps were used to update the 1:10,560 maps. The published date given therefore is often some years later than the surveyed date. Before 1938, all OS maps were based on the Cassini Projection, with independent surveys of a single county or group of counties, giving rise to significant inaccuracies in outlying areas. In the late 1940's, a Provisional Edition was produced, which updated the 1:10,560 mapping from a number of sources. The maps appear unfinished - with all military camps and other strategic sites removed. These maps were initially overprinted with the National Grid. In 1970, the first 1:10,000 maps were produced using the Transverse Mercator Projection. The revision process continued until recently, with new editions appearing every 10 years or so for urban areas.

Map Name(s) and Date(s)



Historical Map - Slice B



Order Details

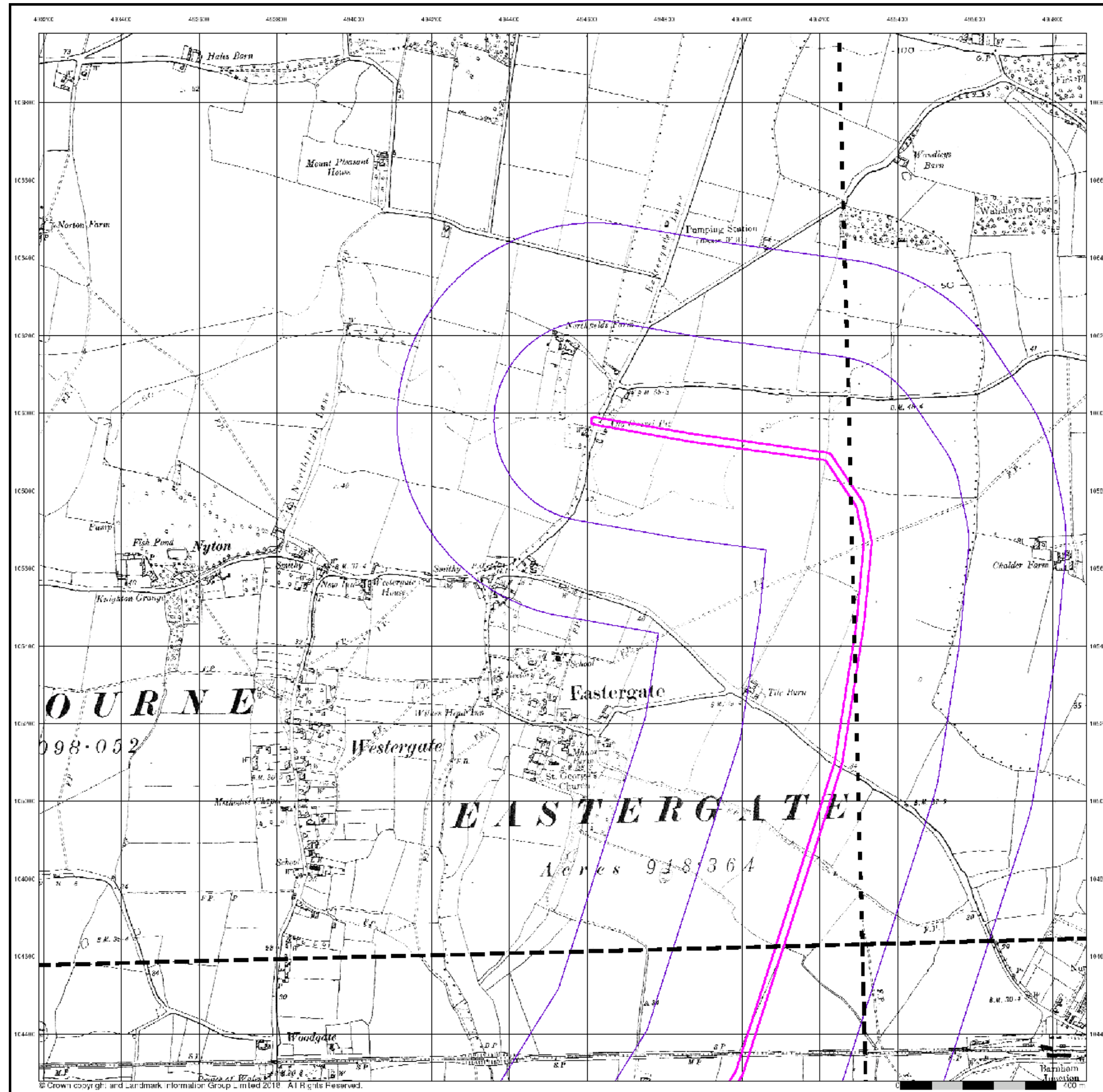
Order Number: 157366589\_1\_1  
 Customer Ref: A29 Realignment Route  
 National Grid Reference: 495050, 105440  
 Slice: B  
 Site Area (Ha): 9.04  
 Search Buffer (m): 500

Site Details

A29 Realignment Route, Shripney, West Sussex



Tel: 0844 844 9952  
 Fax: 0844 844 9951  
 Web: www.envirocheck.co.uk



Sussex

Published 1899

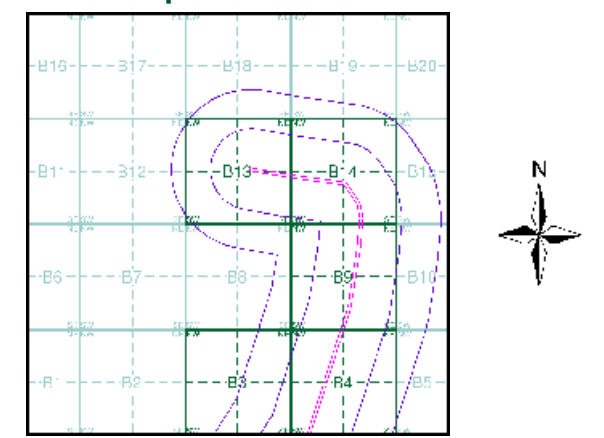
Source map scale - 1:10,560

The historical maps shown were reproduced from maps predominantly held at the scale adopted for England, Wales and Scotland in the 1840's. In 1854 the 1:2,500 scale was adopted for mapping urban areas; these maps were used to update the 1:10,560 maps. The published date given therefore is often some years later than the surveyed date. Before 1938, all OS maps were based on the Cassini Projection, with independent surveys of a single county or group of counties, giving rise to significant inaccuracies in outlying areas. In the late 1940's, a Provisional Edition was produced, which updated the 1:10,560 mapping from a number of sources. The maps appear unfinished - with all military camps and other strategic sites removed. These maps were initially overprinted with the National Grid. In 1970, the first 1:10,000 maps were produced using the Transverse Mercator Projection. The revision process continued until recently, with new editions appearing every 10 years or so for urban areas.

Map Name(s) and Date(s)

062NW 1899 1:10,560	062NE 1899 1:10,560
062SW 1899 1:10,560	062SE 1899 1:10,560

Historical Map - Slice B



Order Details

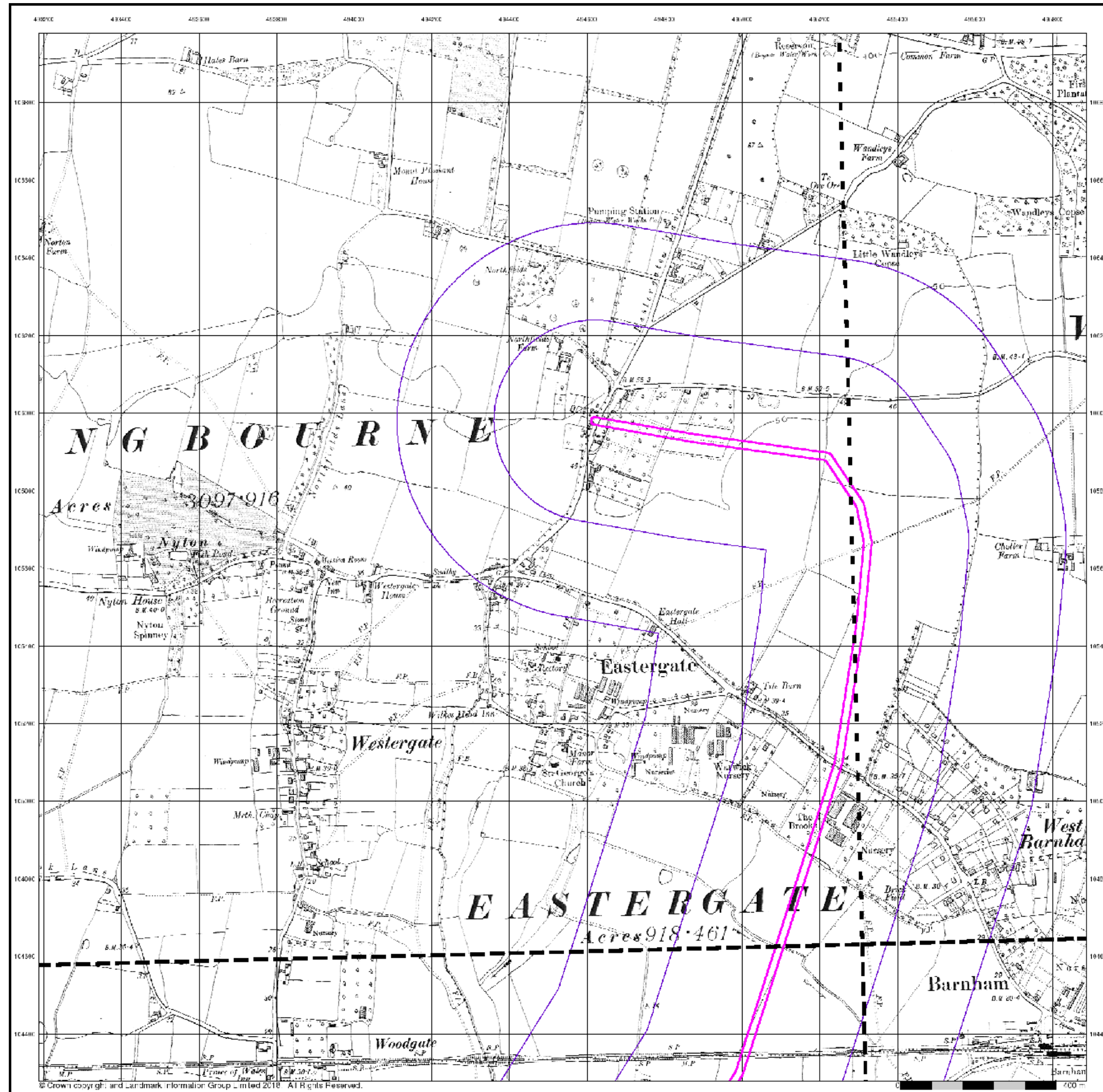
Order Number: 157366589\_1\_1  
 Customer Ref: A29 Realignment Route  
 National Grid Reference: 495050, 105440  
 Slice: B  
 Site Area (Ha): 9.04  
 Search Buffer (m): 500

Site Details

A29 Realignment Route, Shripney, West Sussex



Tel: 0844 844 9952  
 Fax: 0844 844 9951  
 Web: www.envirocheck.co.uk



**Sussex**

**Published 1913 - 1914**

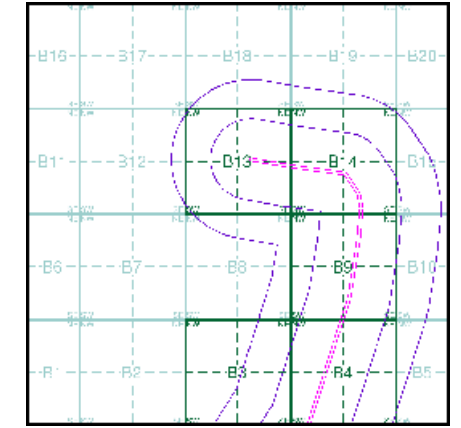
**Source map scale - 1:10,560**

The historical maps shown were reproduced from maps predominantly held at the scale adopted for England, Wales and Scotland in the 1840's. In 1854 the 1:2,500 scale was adopted for mapping urban areas; these maps were used to update the 1:10,560 maps. The published date given therefore is often some years later than the surveyed date. Before 1938, all OS maps were based on the Cassini Projection, with independent surveys of a single county or group of counties, giving rise to significant inaccuracies in outlying areas. In the late 1940's, a Provisional Edition was produced, which updated the 1:10,560 mapping from a number of sources. The maps appear unfinished - with all military camps and other strategic sites removed. These maps were initially overprinted with the National Grid. In 1970, the first 1:10,000 maps were produced using the Transverse Mercator Projection. The revision process continued until recently, with new editions appearing every 10 years or so for urban areas.

**Map Name(s) and Date(s)**

062NW 1914 1:10,560	062NE 1914 1:10,560
062SW 1914 1:10,560	062SE 1913 1:10,560

**Historical Map - Slice B**



**Order Details**

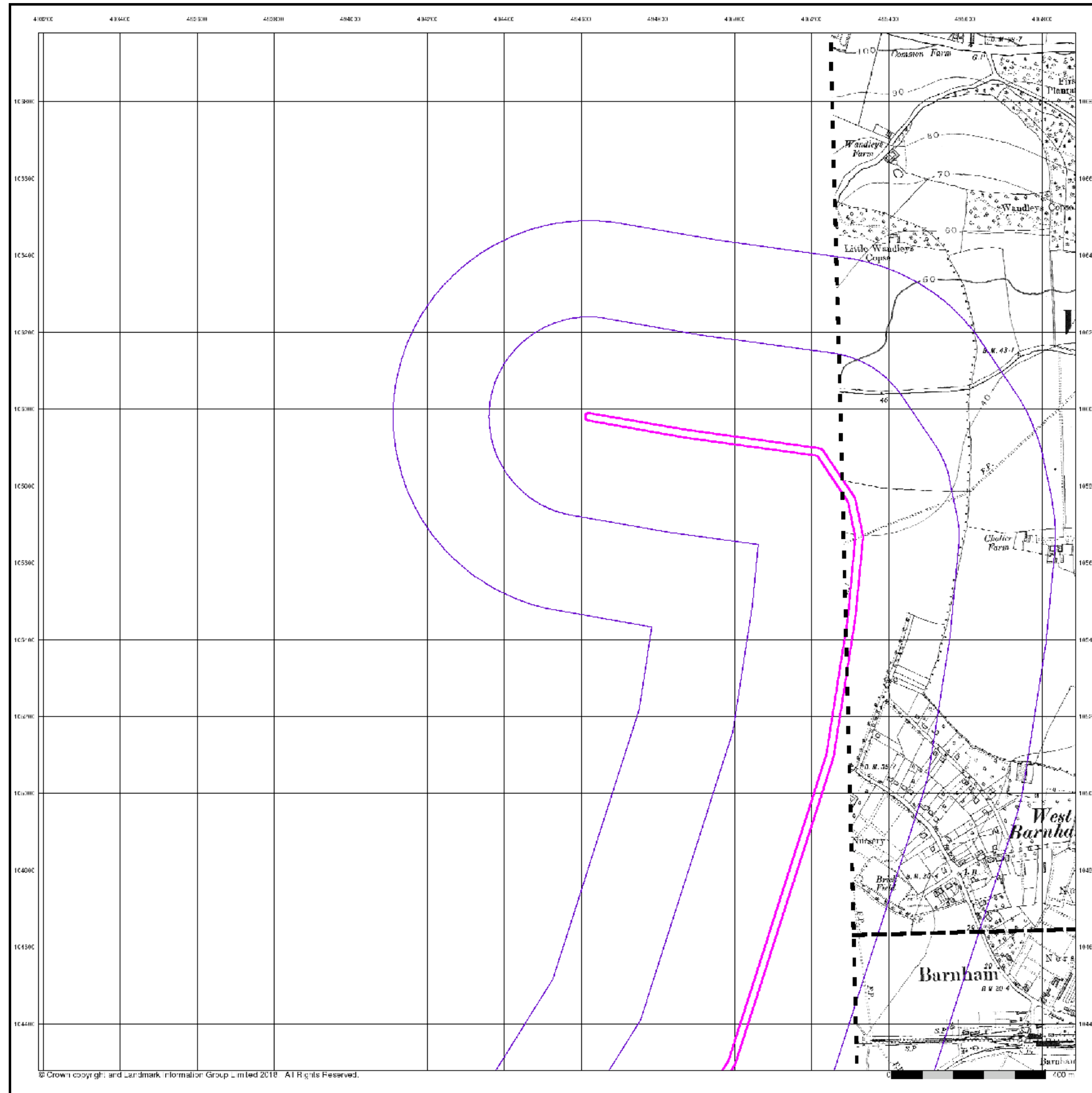
Order Number: 157366589\_1\_1  
 Customer Ref: A29 Realignment Route  
 National Grid Reference: 495050, 105440  
 Slice: B  
 Site Area (Ha): 9.04  
 Search Buffer (m): 500

**Site Details**

A29 Realignment Route, Shripney, West Sussex



Tel: 0844 844 9952  
 Fax: 0844 844 9951  
 Web: www.envirocheck.co.uk



**Sussex**

**Published 1913 - 1914**

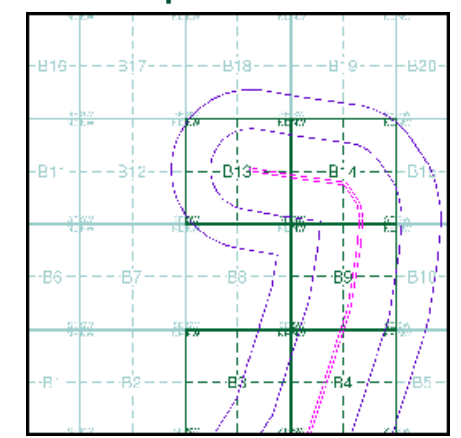
**Source map scale - 1:10,560**

The historical maps shown were reproduced from maps predominantly held at the scale adopted for England, Wales and Scotland in the 1840's. In 1854 the 1:2,500 scale was adopted for mapping urban areas; these maps were used to update the 1:10,560 maps. The published date given therefore is often some years later than the surveyed date. Before 1938, all OS maps were based on the Cassini Projection, with independent surveys of a single county or group of counties, giving rise to significant inaccuracies in outlying areas. In the late 1940's, a Provisional Edition was produced, which updated the 1:10,560 mapping from a number of sources. The maps appear unfinished - with all military camps and other strategic sites removed. These maps were initially overprinted with the National Grid. In 1970, the first 1:10,000 maps were produced using the Transverse Mercator Projection. The revision process continued until recently, with new editions appearing every 10 years or so for urban areas.

**Map Name(s) and Date(s)**

062NE	1914	1:10,560
062SE	1913	1:10,560

**Historical Map - Slice B**



**Order Details**

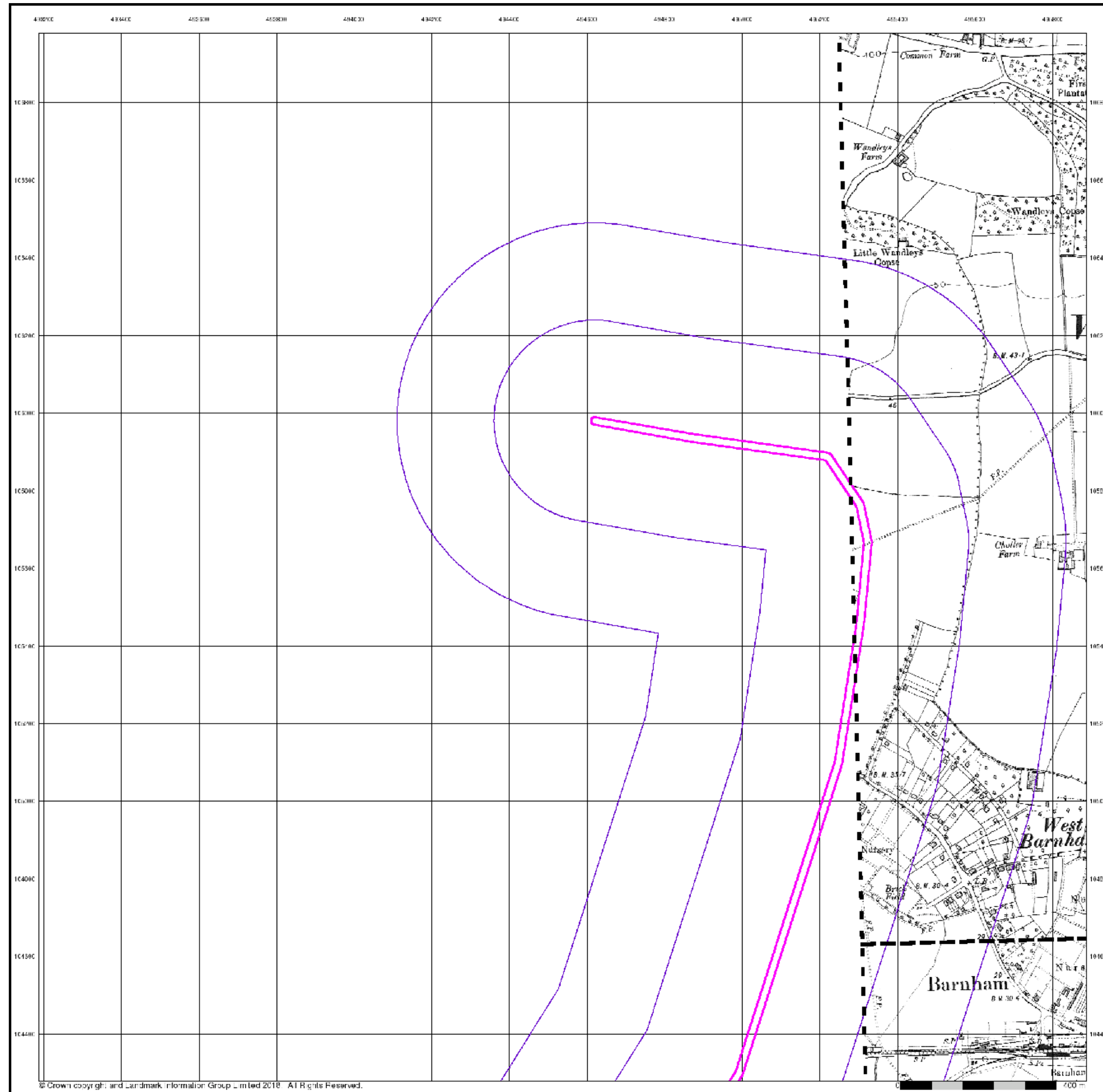
Order Number: 157366589\_1\_1  
 Customer Ref: A29 Realignment Route  
 National Grid Reference: 495050, 105440  
 Slice: B  
 Site Area (Ha): 9.04  
 Search Buffer (m): 500

**Site Details**

A29 Realignment Route, Shripney, West Sussex



Tel: 0844 844 9952  
 Fax: 0844 844 9951  
 Web: www.envirocheck.co.uk



**Sussex**

**Published 1913 - 1914**

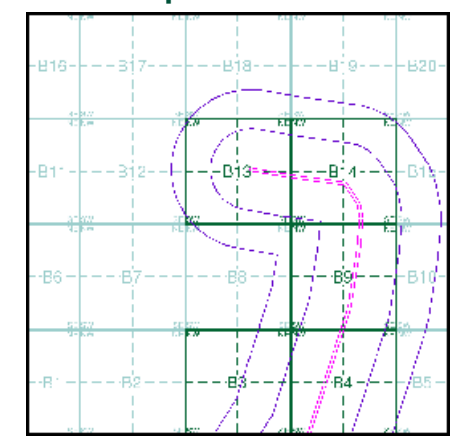
**Source map scale - 1:10,560**

The historical maps shown were reproduced from maps predominantly held at the scale adopted for England, Wales and Scotland in the 1840's. In 1854 the 1:2,500 scale was adopted for mapping urban areas; these maps were used to update the 1:10,560 maps. The published date given therefore is often some years later than the surveyed date. Before 1938, all OS maps were based on the Cassini Projection, with independent surveys of a single county or group of counties, giving rise to significant inaccuracies in outlying areas. In the late 1940's, a Provisional Edition was produced, which updated the 1:10,560 mapping from a number of sources. The maps appear unfinished - with all military camps and other strategic sites removed. These maps were initially overprinted with the National Grid. In 1970, the first 1:10,000 maps were produced using the Transverse Mercator Projection. The revision process continued until recently, with new editions appearing every 10 years or so for urban areas.

**Map Name(s) and Date(s)**

062NE	1914	1:10,560
062SE	1913	1:10,560

**Historical Map - Slice B**



**Order Details**

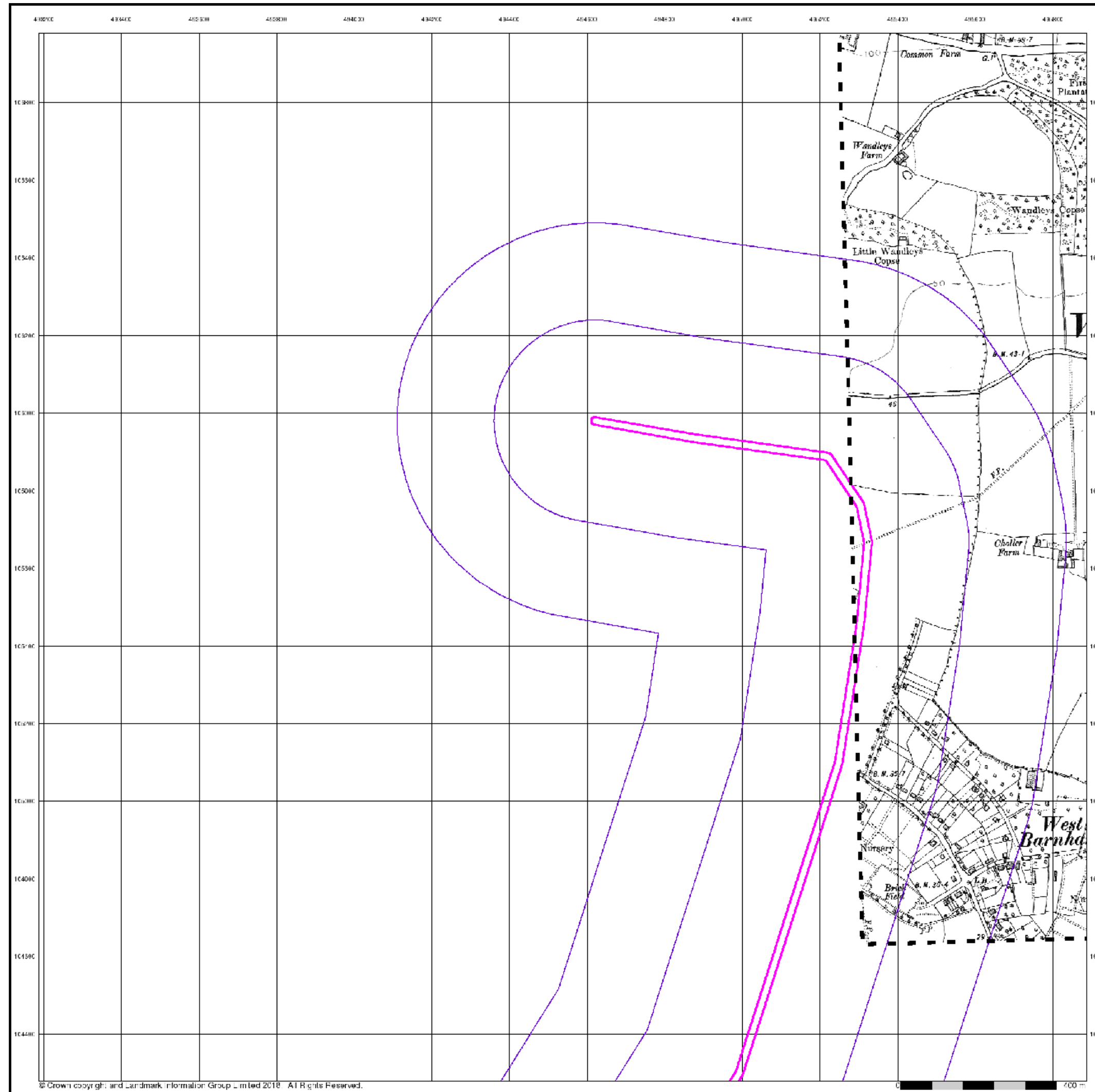
Order Number: 157366589\_1\_1  
 Customer Ref: A29 Realignment Route  
 National Grid Reference: 495050, 105440  
 Slice: B  
 Site Area (Ha): 9.04  
 Search Buffer (m): 500

**Site Details**

A29 Realignment Route, Shripney, West Sussex



Tel: 0844 844 9952  
 Fax: 0844 844 9951  
 Web: www.envirocheck.co.uk



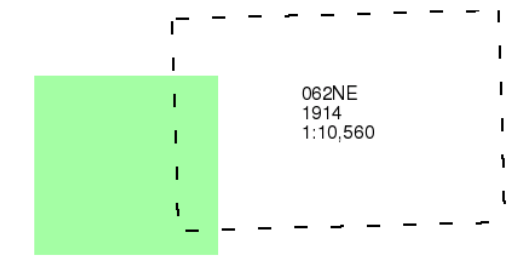
**Sussex**

**Published 1914**

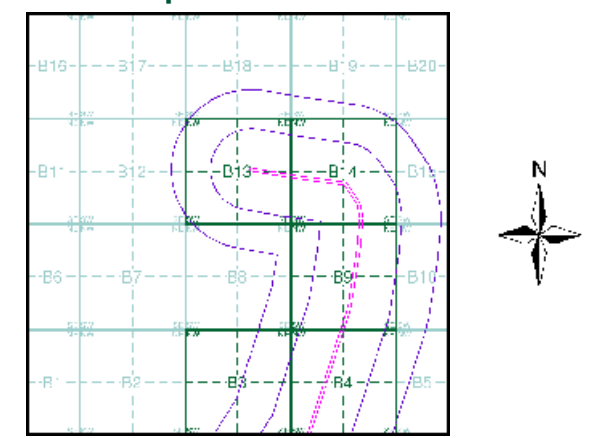
**Source map scale - 1:10,560**

The historical maps shown were reproduced from maps predominantly held at the scale adopted for England, Wales and Scotland in the 1840's. In 1854 the 1:2,500 scale was adopted for mapping urban areas; these maps were used to update the 1:10,560 maps. The published date given therefore is often some years later than the surveyed date. Before 1938, all OS maps were based on the Cassini Projection, with independent surveys of a single county or group of counties, giving rise to significant inaccuracies in outlying areas. In the late 1940's, a Provisional Edition was produced, which updated the 1:10,560 mapping from a number of sources. The maps appear unfinished - with all military camps and other strategic sites removed. These maps were initially overprinted with the National Grid. In 1970, the first 1:10,000 maps were produced using the Transverse Mercator Projection. The revision process continued until recently, with new editions appearing every 10 years or so for urban areas.

**Map Name(s) and Date(s)**



**Historical Map - Slice B**



**Order Details**

Order Number: 157366589\_1\_1  
 Customer Ref: A29 Realignment Route  
 National Grid Reference: 495050, 105440  
 Slice: B  
 Site Area (Ha): 9.04  
 Search Buffer (m): 500

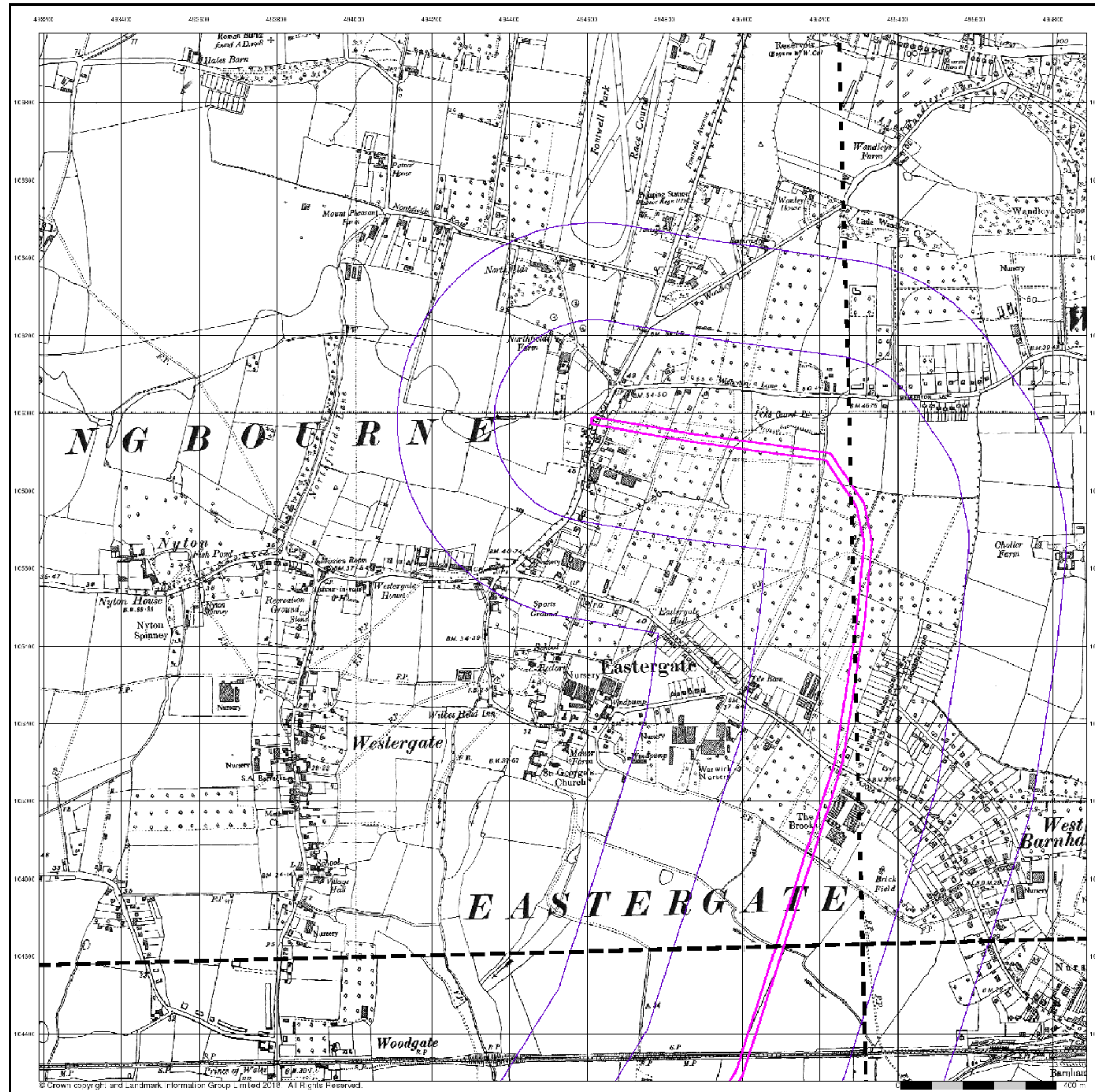
**Site Details**

A29 Realignment Route, Shripney, West Sussex



Tel: 0844 844 9952  
 Fax: 0844 844 9951  
 Web: www.envirocheck.co.uk





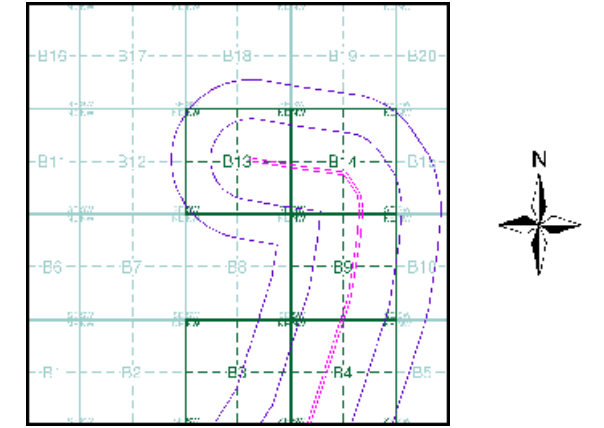
**Sussex**  
**Published 1938 - 1951**  
**Source map scale - 1:10,560**

The historical maps shown were reproduced from maps predominantly held at the scale adopted for England, Wales and Scotland in the 1840's. In 1854 the 1:2,500 scale was adopted for mapping urban areas; these maps were used to update the 1:10,560 maps. The published date given therefore is often some years later than the surveyed date. Before 1938, all OS maps were based on the Cassini Projection, with independent surveys of a single county or group of counties, giving rise to significant inaccuracies in outlying areas. In the late 1940's, a Provisional Edition was produced, which updated the 1:10,560 mapping from a number of sources. The maps appear unfinished - with all military camps and other strategic sites removed. These maps were initially overprinted with the National Grid. In 1970, the first 1:10,000 maps were produced using the Transverse Mercator Projection. The revision process continued until recently, with new editions appearing every 10 years or so for urban areas.

**Map Name(s) and Date(s)**

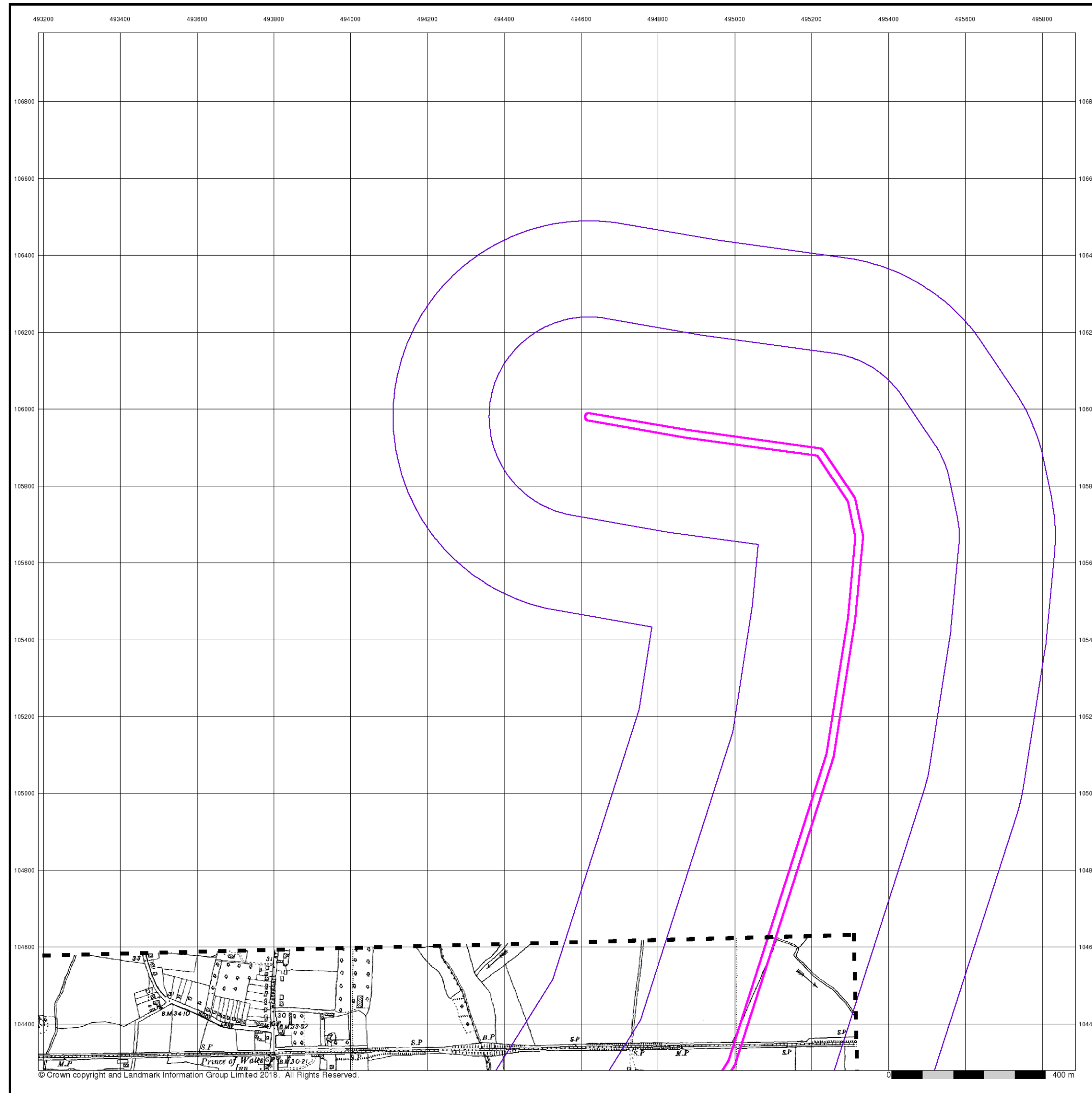
062NW 1951 1:10,560	062NE 1951 1:10,560
062SW 1938 1:10,560	062SE 1951 1:10,560

**Historical Map - Slice B**



**Order Details**  
 Order Number: 157366589\_1\_1  
 Customer Ref: A29 Realignment Route  
 National Grid Reference: 495050, 105440  
 Slice: B  
 Site Area (Ha): 9.04  
 Search Buffer (m): 500

**Site Details**  
 A29 Realignment Route, Shripney, West Sussex



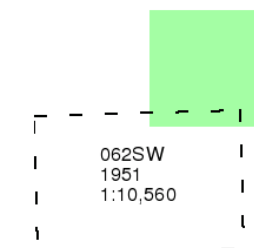
**Sussex**

**Published 1951**

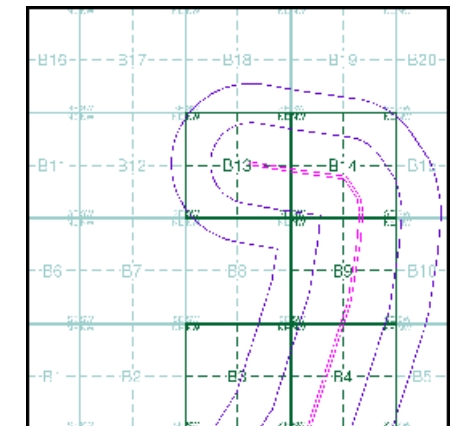
**Source map scale - 1:10,560**

The historical maps shown were reproduced from maps predominantly held at the scale adopted for England, Wales and Scotland in the 1840's. In 1854 the 1:2,500 scale was adopted for mapping urban areas; these maps were used to update the 1:10,560 maps. The published date given therefore is often some years later than the surveyed date. Before 1938, all OS maps were based on the Cassini Projection, with independent surveys of a single county or group of counties, giving rise to significant inaccuracies in outlying areas. In the late 1940's, a Provisional Edition was produced, which updated the 1:10,560 mapping from a number of sources. The maps appear unfinished - with all military camps and other strategic sites removed. These maps were initially overprinted with the National Grid. In 1970, the first 1:10,000 maps were produced using the Transverse Mercator Projection. The revision process continued until recently, with new editions appearing every 10 years or so for urban areas.

**Map Name(s) and Date(s)**



**Historical Map - Slice B**



**Order Details**

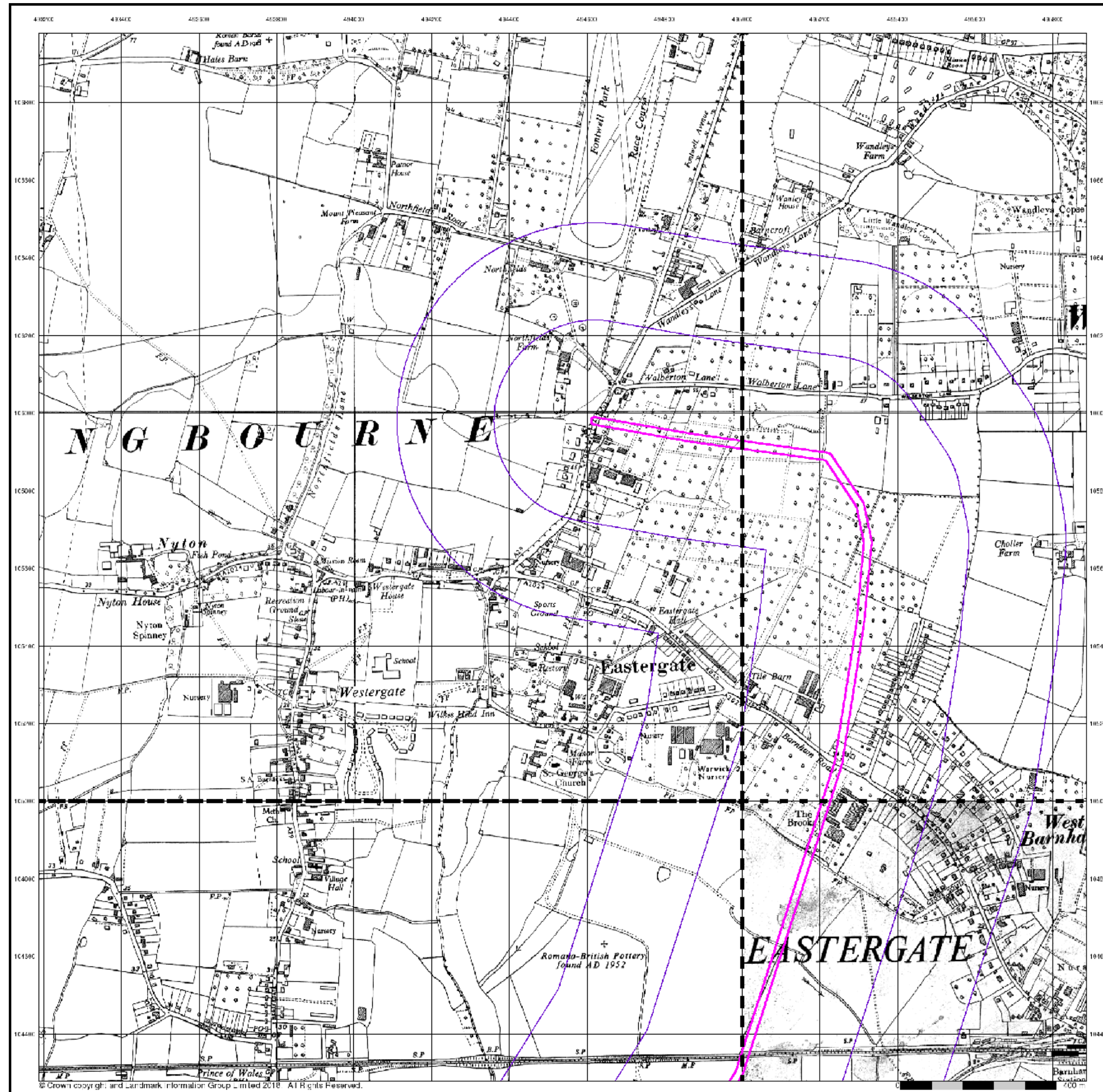
Order Number: 157366589\_1\_1  
 Customer Ref: A29 Realignment Route  
 National Grid Reference: 495050, 105440  
 Slice: B  
 Site Area (Ha): 9.04  
 Search Buffer (m): 500

**Site Details**

A29 Realignment Route, Shripney, West Sussex



Tel: 0844 844 9952  
 Fax: 0844 844 9951  
 Web: www.envirocheck.co.uk



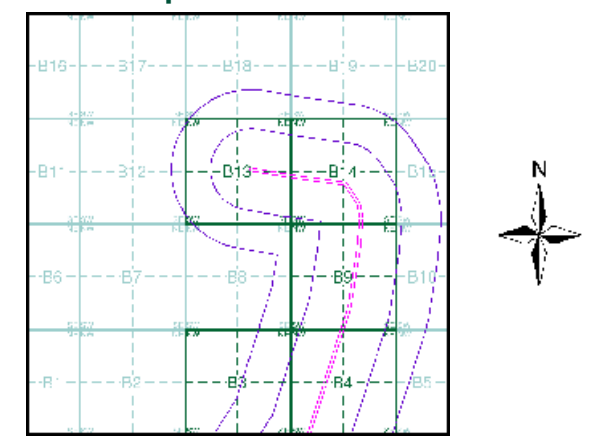
**Ordnance Survey Plan**  
**Published 1961 - 1962**  
**Source map scale - 1:10,000**

The historical maps shown were reproduced from maps predominantly held at the scale adopted for England, Wales and Scotland in the 1840's. In 1854 the 1:2,500 scale was adopted for mapping urban areas; these maps were used to update the 1:10,560 maps. The published date given therefore is often some years later than the surveyed date. Before 1938, all OS maps were based on the Cassini Projection, with independent surveys of a single county or group of counties, giving rise to significant inaccuracies in outlying areas. In the late 1940's, a Provisional Edition was produced, which updated the 1:10,560 mapping from a number of sources. The maps appear unfinished - with all military camps and other strategic sites removed. These maps were initially overprinted with the National Grid. In 1970, the first 1:10,000 maps were produced using the Transverse Mercator Projection. The revision process continued until recently, with new editions appearing every 10 years or so for urban areas.

**Map Name(s) and Date(s)**

SU90NW	SU90NE
1961	1961
1:10,560	1:10,560
SU90SW	SU90SE
1961	1962
1:10,560	1:10,560

**Historical Map - Slice B**



**Order Details**

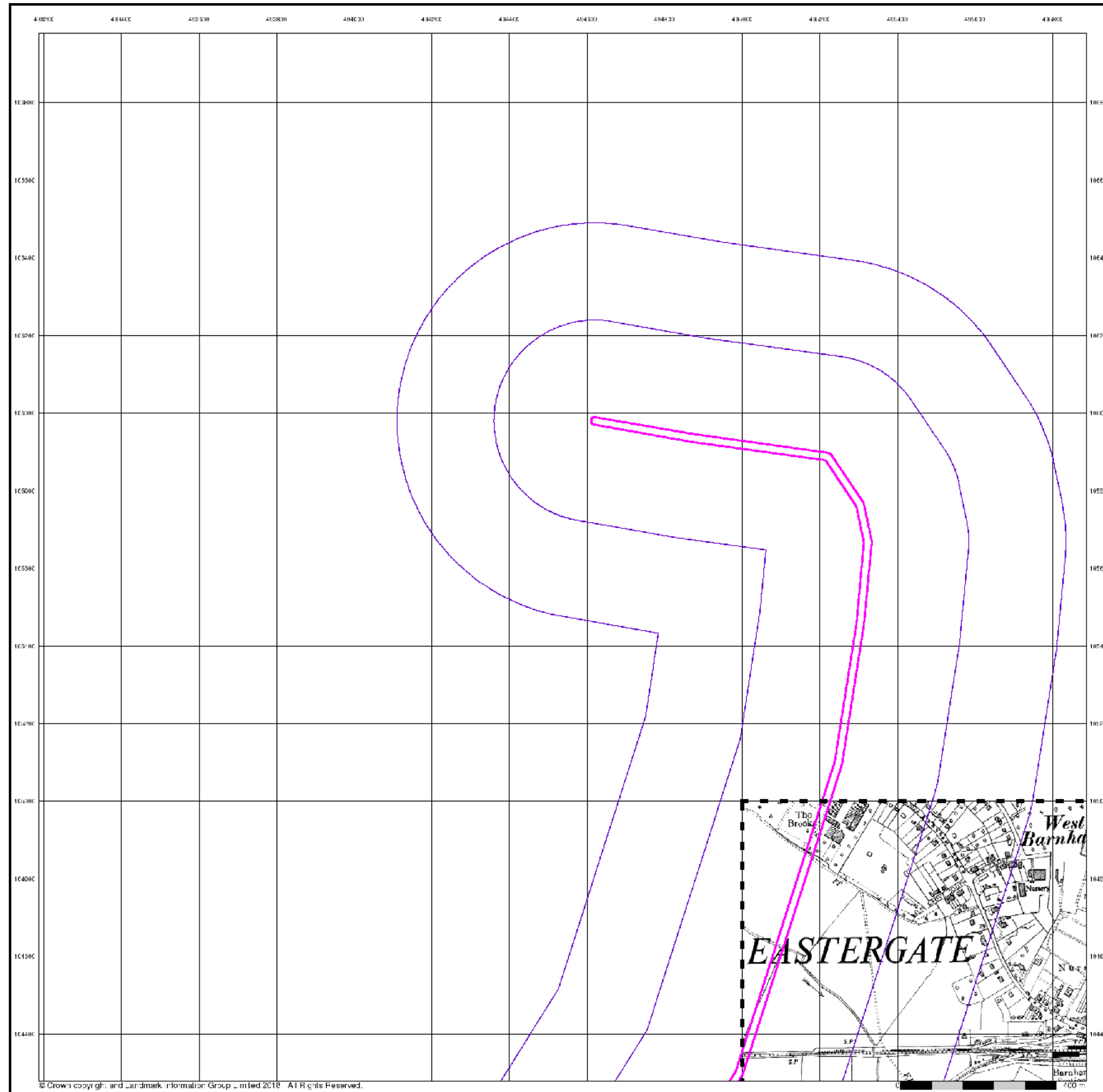
Order Number: 157366589\_1\_1  
 Customer Ref: A29 Realignment Route  
 National Grid Reference: 495050, 105440  
 Slice: B  
 Site Area (Ha): 9.04  
 Search Buffer (m): 500

**Site Details**

A29 Realignment Route, Shripney, West Sussex



Tel: 0844 844 9952  
 Fax: 0844 844 9951  
 Web: www.envirocheck.co.uk



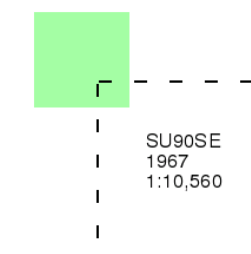
### Ordnance Survey Plan

Published 1967

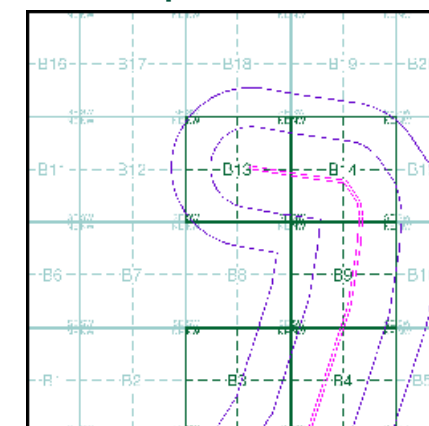
Source map scale - 1:10,000

The historical maps shown were reproduced from maps predominantly held at the scale adopted for England, Wales and Scotland in the 1840's. In 1854 the 1:2,500 scale was adopted for mapping urban areas; these maps were used to update the 1:10,560 maps. The published date given therefore is often some years later than the surveyed date. Before 1938, all OS maps were based on the Cassini Projection, with independent surveys of a single county or group of counties, giving rise to significant inaccuracies in outlying areas. In the late 1940's, a Provisional Edition was produced, which updated the 1:10,560 mapping from a number of sources. The maps appear unfinished - with all military camps and other strategic sites removed. These maps were initially overprinted with the National Grid. In 1970, the first 1:10,000 maps were produced using the Transverse Mercator Projection. The revision process continued until recently, with new editions appearing every 10 years or so for urban areas.

### Map Name(s) and Date(s)



### Historical Map - Slice B



### Order Details

Order Number: 157366589\_1\_1  
 Customer Ref: A29 Realignment Route  
 National Grid Reference: 495050, 105440  
 Slice: B  
 Site Area (Ha): 9.04  
 Search Buffer (m): 500

### Site Details

A29 Realignment Route, Shripney, West Sussex



Tel: 0844 844 9952  
 Fax: 0844 844 9951  
 Web: www.envirocheck.co.uk



## Ordnance Survey Plan

Published 1970 - 1979

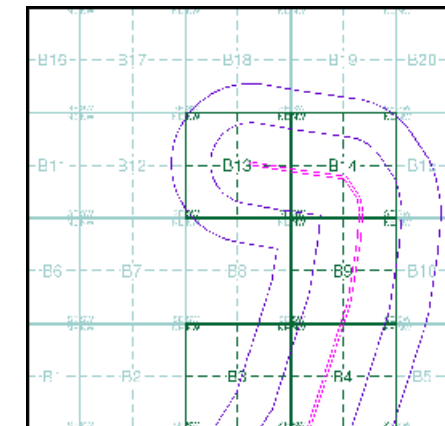
Source map scale - 1:10,000

The historical maps shown were reproduced from maps predominantly held at the scale adopted for England, Wales and Scotland in the 1840's. In 1854 the 1:2,500 scale was adopted for mapping urban areas; these maps were used to update the 1:10,560 maps. The published date given therefore is often some years later than the surveyed date. Before 1938, all OS maps were based on the Cassini Projection, with independent surveys of a single county or group of counties, giving rise to significant inaccuracies in outlying areas. In the late 1940's, a Provisional Edition was produced, which updated the 1:10,560 mapping from a number of sources. The maps appear unfinished - with all military camps and other strategic sites removed. These maps were initially overprinted with the National Grid. In 1970, the first 1:10,000 maps were produced using the Transverse Mercator Projection. The revision process continued until recently, with new editions appearing every 10 years or so for urban areas.

### Map Name(s) and Date(s)

SU90NW	SU90NE
1970	1979
1:10,560	1:10,000
SU90SW	
1979	
1:10,000	

### Historical Map - Slice B



### Order Details

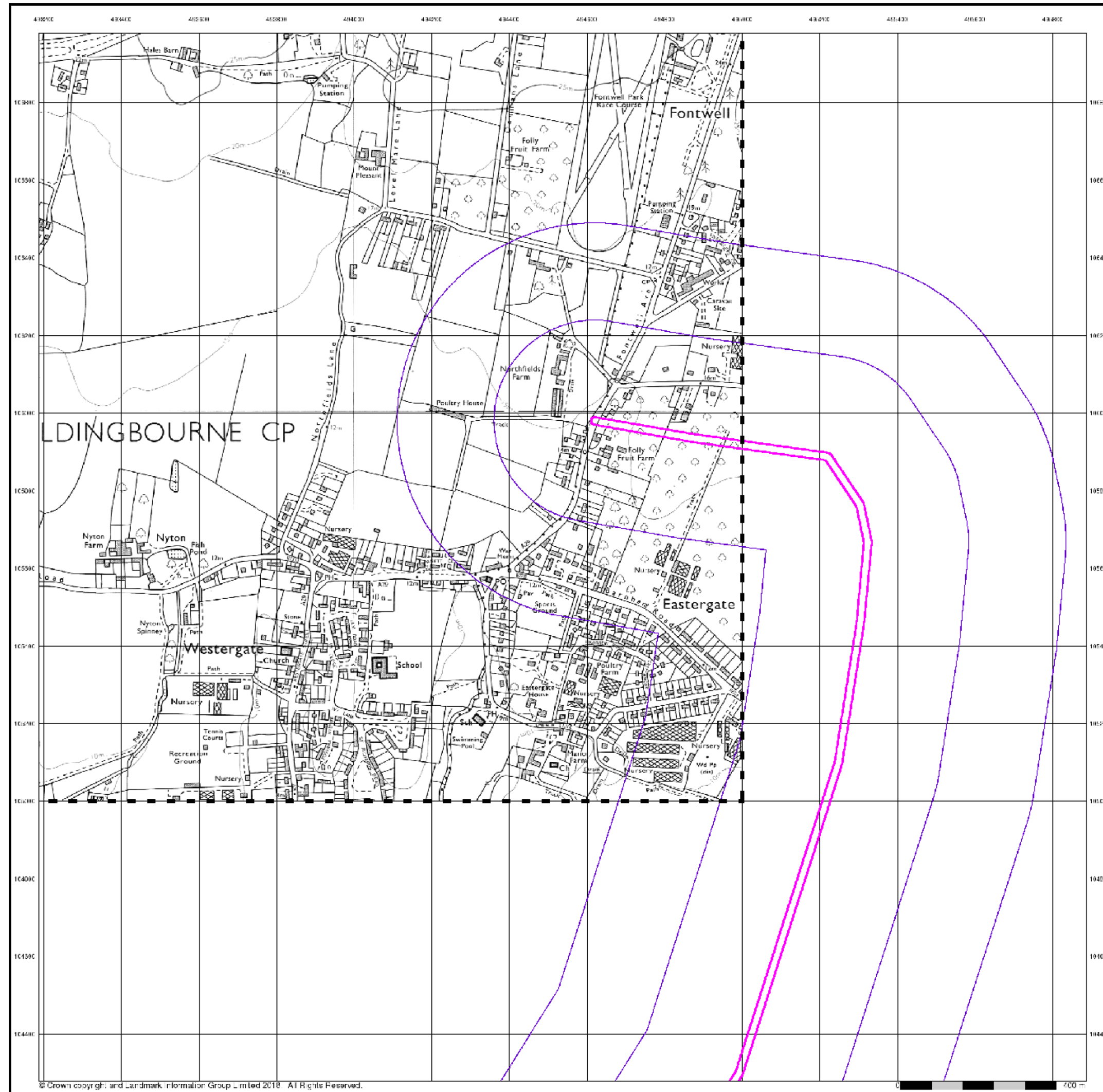
Order Number: 157366589\_1\_1  
 Customer Ref: A29 Realignment Route  
 National Grid Reference: 495050, 105440  
 Slice: B  
 Site Area (Ha): 9.04  
 Search Buffer (m): 500

### Site Details

A29 Realignment Route, Shripney, West Sussex



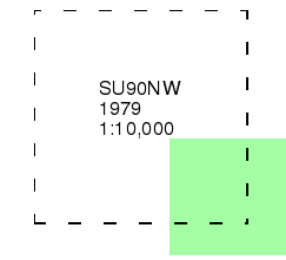
Tel: 0844 844 9952  
 Fax: 0844 844 9951  
 Web: www.envirocheck.co.uk



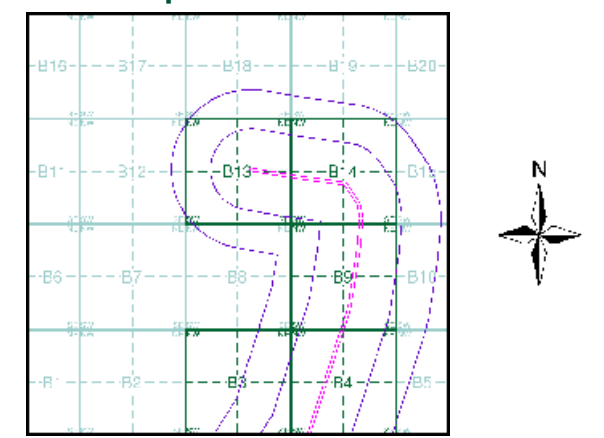
**Ordnance Survey Plan**  
**Published 1979**  
**Source map scale - 1:10,000**

The historical maps shown were reproduced from maps predominantly held at the scale adopted for England, Wales and Scotland in the 1840's. In 1854 the 1:2,500 scale was adopted for mapping urban areas; these maps were used to update the 1:10,560 maps. The published date given therefore is often some years later than the surveyed date. Before 1938, all OS maps were based on the Cassini Projection, with independent surveys of a single county or group of counties, giving rise to significant inaccuracies in outlying areas. In the late 1940's, a Provisional Edition was produced, which updated the 1:10,560 mapping from a number of sources. The maps appear unfinished - with all military camps and other strategic sites removed. These maps were initially overprinted with the National Grid. In 1970, the first 1:10,000 maps were produced using the Transverse Mercator Projection. The revision process continued until recently, with new editions appearing every 10 years or so for urban areas.

**Map Name(s) and Date(s)**



**Historical Map - Slice B**



**Order Details**

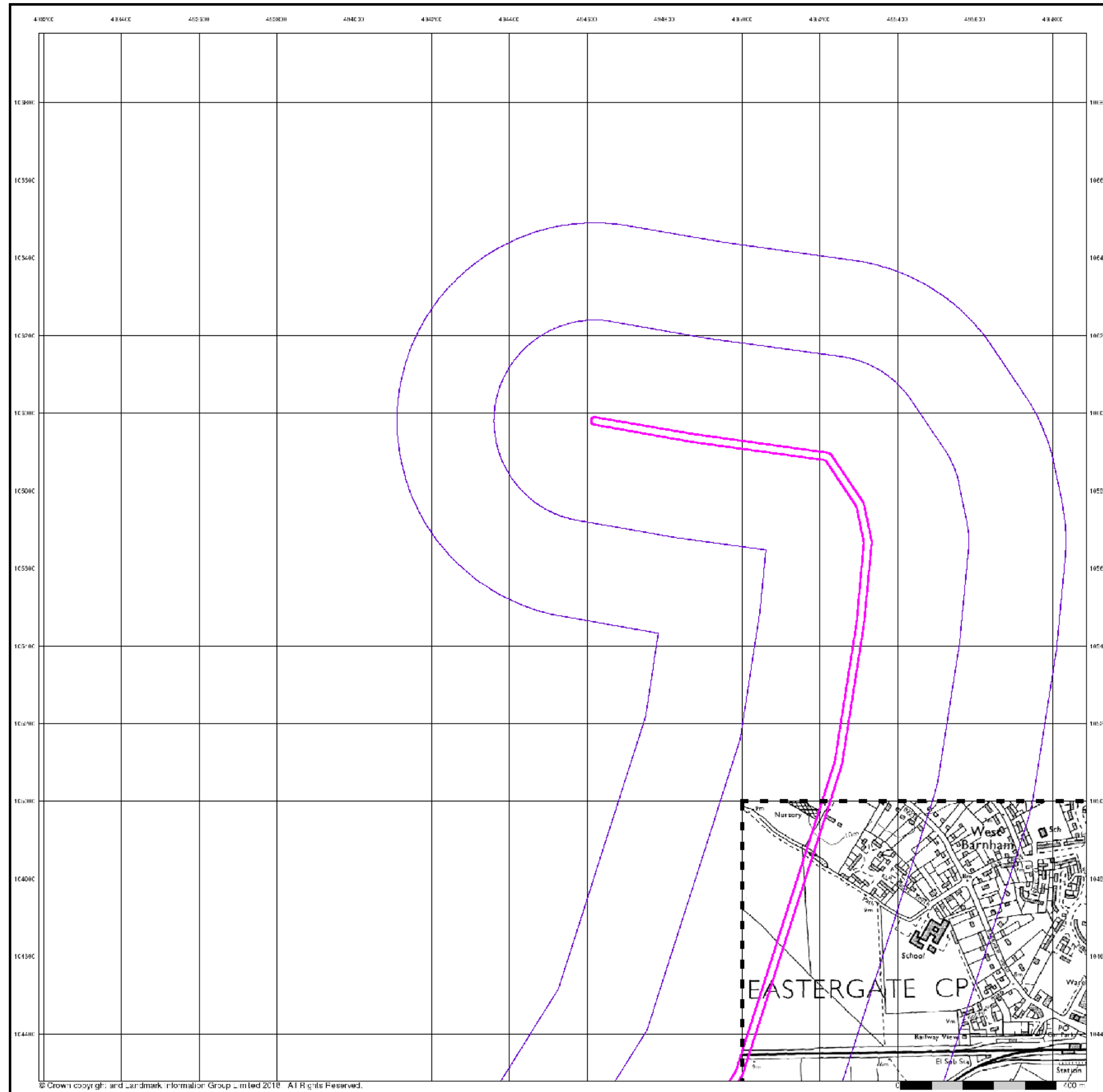
Order Number: 157366589\_1\_1  
 Customer Ref: A29 Realignment Route  
 National Grid Reference: 495050, 105440  
 Slice: B  
 Site Area (Ha): 9.04  
 Search Buffer (m): 500

**Site Details**

A29 Realignment Route, Shripney, West Sussex



Tel: 0844 844 9952  
 Fax: 0844 844 9951  
 Web: www.envirocheck.co.uk



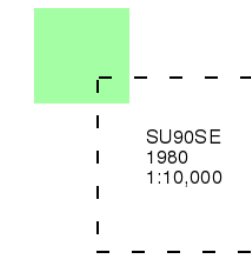
## Ordnance Survey Plan

Published 1980

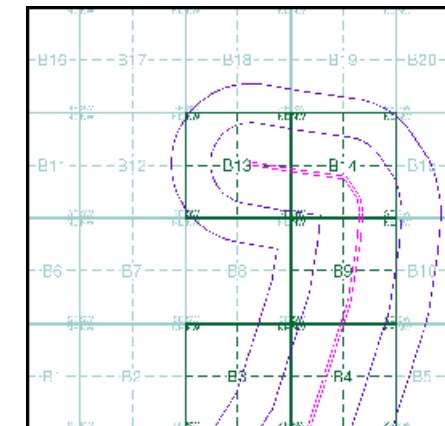
Source map scale - 1:10,000

The historical maps shown were reproduced from maps predominantly held at the scale adopted for England, Wales and Scotland in the 1840's. In 1854 the 1:2,500 scale was adopted for mapping urban areas; these maps were used to update the 1:10,560 maps. The published date given therefore is often some years later than the surveyed date. Before 1938, all OS maps were based on the Cassini Projection, with independent surveys of a single county or group of counties, giving rise to significant inaccuracies in outlying areas. In the late 1940's, a Provisional Edition was produced, which updated the 1:10,560 mapping from a number of sources. The maps appear unfinished - with all military camps and other strategic sites removed. These maps were initially overprinted with the National Grid. In 1970, the first 1:10,000 maps were produced using the Transverse Mercator Projection. The revision process continued until recently, with new editions appearing every 10 years or so for urban areas.

### Map Name(s) and Date(s)



### Historical Map - Slice B



### Order Details

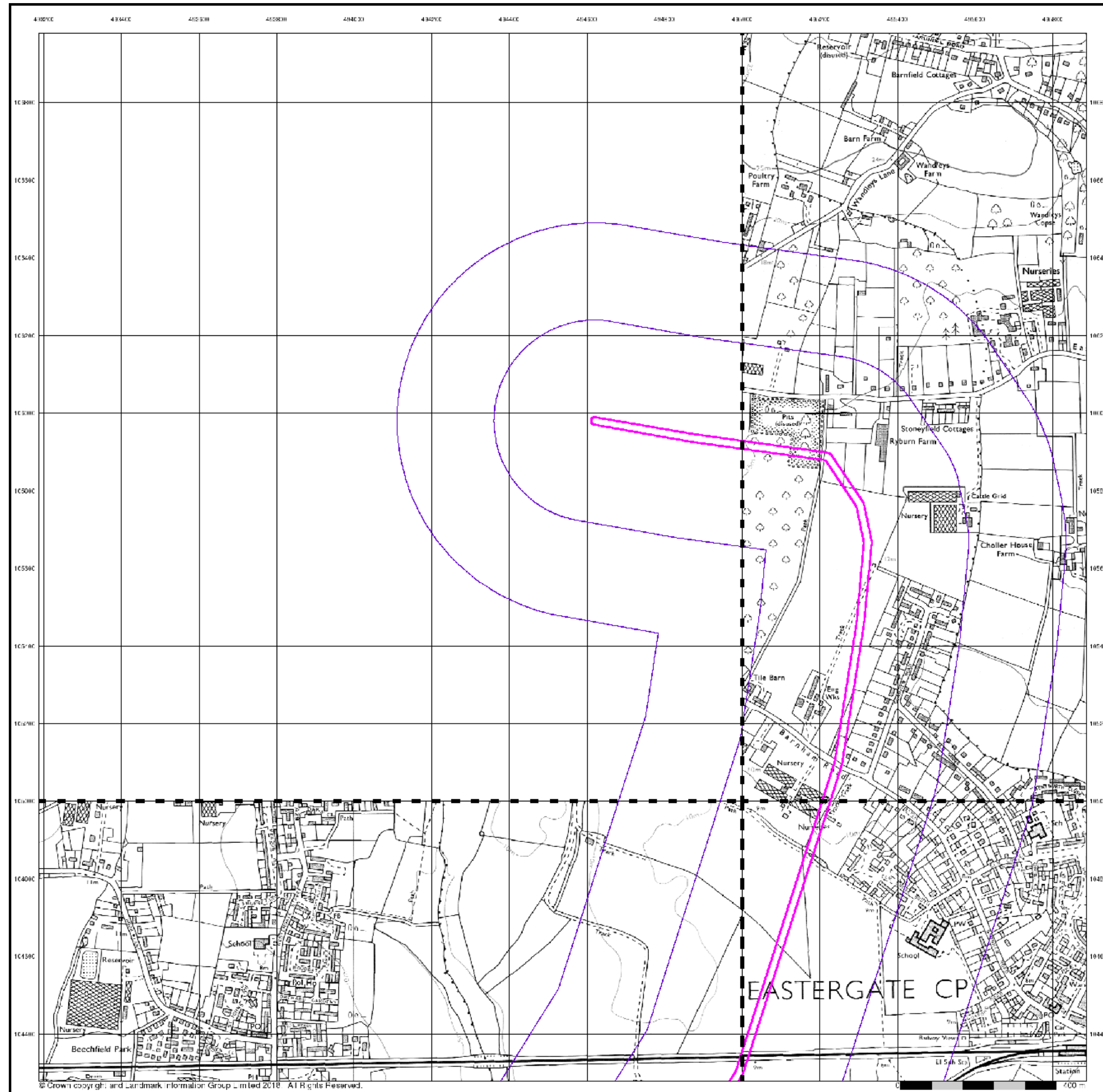
Order Number: 157366589\_1\_1  
 Customer Ref: A29 Realignment Route  
 National Grid Reference: 495050, 105440  
 Slice: B  
 Site Area (Ha): 9.04  
 Search Buffer (m): 500

### Site Details

A29 Realignment Route, Shripney, West Sussex



Tel: 0844 844 9952  
 Fax: 0844 844 9951  
 Web: www.envirocheck.co.uk



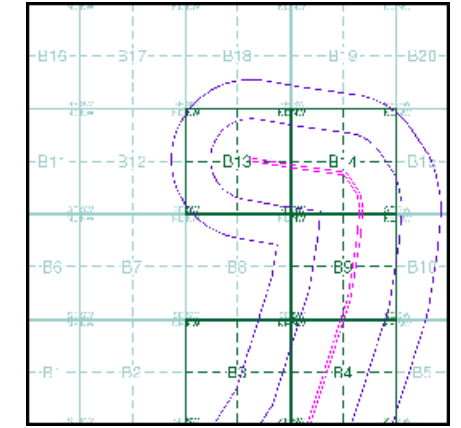
**Ordnance Survey Plan**  
**Published 1992 - 1993**  
**Source map scale - 1:10,000**

The historical maps shown were reproduced from maps predominantly held at the scale adopted for England, Wales and Scotland in the 1840's. In 1854 the 1:2,500 scale was adopted for mapping urban areas; these maps were used to update the 1:10,560 maps. The published date given therefore is often some years later than the surveyed date. Before 1938, all OS maps were based on the Cassini Projection, with independent surveys of a single county or group of counties, giving rise to significant inaccuracies in outlying areas. In the late 1940's, a Provisional Edition was produced, which updated the 1:10,560 mapping from a number of sources. The maps appear unfinished - with all military camps and other strategic sites removed. These maps were initially overprinted with the National Grid. In 1970, the first 1:10,000 maps were produced using the Transverse Mercator Projection. The revision process continued until recently, with new editions appearing every 10 years or so for urban areas.

**Map Name(s) and Date(s)**

SU90NE	1992	1:10,000
SU90SW	1993	1:10,000
SU90SE	1992	1:10,000

**Historical Map - Slice B**



**Order Details**

Order Number: 157366589\_1\_1  
 Customer Ref: A29 Realignment Route  
 National Grid Reference: 495050, 105440  
 Slice: B  
 Site Area (Ha): 9.04  
 Search Buffer (m): 500

**Site Details**

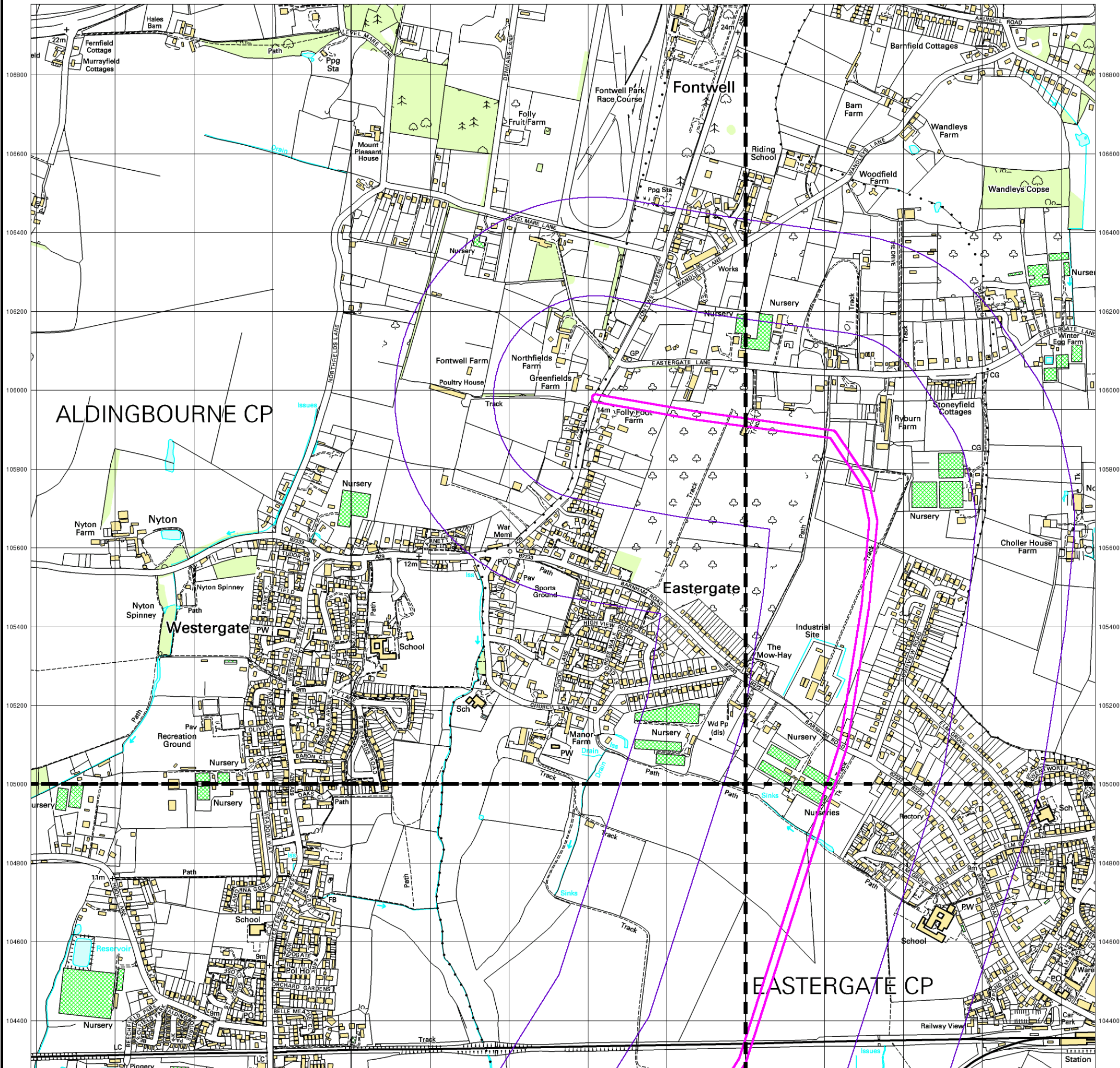
A29 Realignment Route, Shripney, West Sussex



Tel: 0844 844 9952  
 Fax: 0844 844 9951  
 Web: www.envirocheck.co.uk



493200 493400 493600 493800 494000 494200 494400 494600 494800 495000 495200 495400 495600 495800



© Crown copyright. All Rights Reserved. Licence Number 100022432.



### 10k Raster Mapping

Published 2000

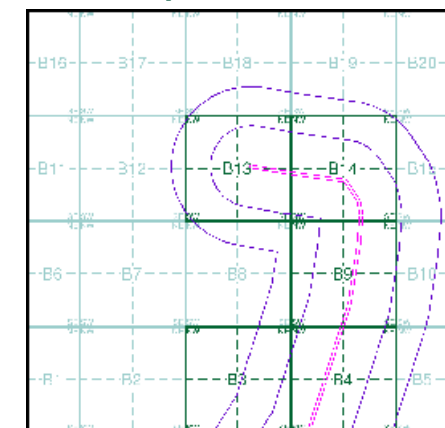
Source map scale - 1:10,000

The historical maps shown were produced from the Ordnance Survey's 1:10,000 colour raster mapping. These maps are derived from Landplan which replaced the old 1:10,000 maps originally published in 1970. The data is highly detailed showing buildings, fences and field boundaries as well as all roads, tracks and paths. Road names are also included together with the relevant road number and classification. Boundary information depiction includes county, unitary authority, district, civil parish and constituency.

### Map Name(s) and Date(s)

SU90NW	SU90NE
2000	2000
1:10,000	1:10,000
SU90SW	SU90SE
2000	2000
1:10,000	1:10,000

### Historical Map - Slice B



### Order Details

Order Number: 157366589\_1\_1  
 Customer Ref: A29 Realignment Route  
 National Grid Reference: 495050, 105440  
 Slice: B  
 Site Area (Ha): 9.04  
 Search Buffer (m): 500

### Site Details

A29 Realignment Route, Shripney, West Sussex



Tel: 0844 844 9952  
 Fax: 0844 844 9951  
 Web: www.envirocheck.co.uk



## 10k Raster Mapping

Published 2006

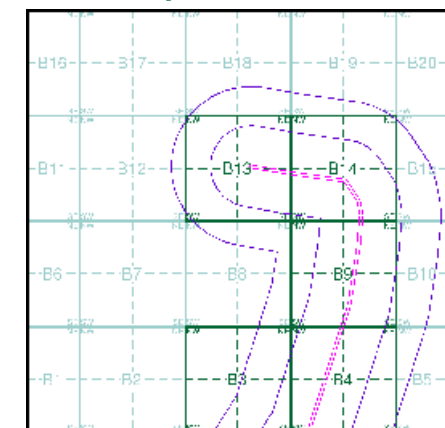
Source map scale - 1:10,000

The historical maps shown were produced from the Ordnance Survey's 1:10,000 colour raster mapping. These maps are derived from Landplan which replaced the old 1:10,000 maps originally published in 1970. The data is highly detailed showing buildings, fences and field boundaries as well as all roads, tracks and paths. Road names are also included together with the relevant road number and classification. Boundary information depiction includes county, unitary authority, district, civil parish and constituency.

### Map Name(s) and Date(s)

SU90NW	SU90NE
2006	2006
1:10,000	1:10,000
SU90SW	SU90SE
2006	2006
1:10,000	1:10,000

### Historical Map - Slice B



### Order Details

Order Number: 157366589\_1\_1  
 Customer Ref: A29 Realignment Route  
 National Grid Reference: 495050, 105440  
 Slice: B  
 Site Area (Ha): 9.04  
 Search Buffer (m): 500

### Site Details

A29 Realignment Route, Shripney, West Sussex



Tel: 0844 844 9952  
 Fax: 0844 844 9951  
 Web: www.envirocheck.co.uk



**VectorMap Local**

**Published 2018**

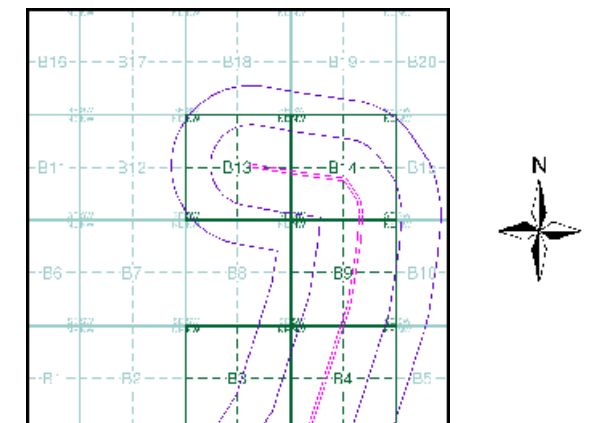
**Source map scale - 1:10,000**

VectorMap Local (Raster) is Ordnance Survey's highest detailed 'backdrop' mapping product. These maps are produced from OS's VectorMap Local, a simple vector dataset at a nominal scale of 1:10,000, covering the whole of Great Britain, that has been designed for creating graphical mapping. OS VectorMap Local is derived from large-scale information surveyed at 1:1250 scale (covering major towns and cities), 1:2500 scale (smaller towns, villages and developed rural areas), and 1:10 000 scale (mountain, moorland and river estuary areas).

**Map Name(s) and Date(s)**

SU90NW 2018 Variable	SU90NE 2018 Variable
SU90SW 2018 Variable	SU90SE 2018 Variable

**Historical Map - Slice B**



**Order Details**

Order Number: 157366589\_1\_1  
 Customer Ref: A29 Realignment Route  
 National Grid Reference: 495050, 105440  
 Slice: B  
 Site Area (Ha): 9.04  
 Search Buffer (m): 500

**Site Details**

A29 Realignment Route, Shripney, West Sussex



Tel: 0844 844 9952  
 Fax: 0844 844 9951  
 Web: www.envirocheck.co.uk

# Appendix E

PLANNING MAP FOR FLOODING



# Flood map for planning

Your reference  
**70060779**

Location (easting/northing)  
**495030/105458**

Created  
**4 Jun 2020 15:03**

**Your selected location is in flood zone 3, an area with a high probability of flooding.**

## **This means:**

- you must complete a flood risk assessment for development in this area
- you should follow the Environment Agency's standing advice for carrying out a flood risk assessment (see [www.gov.uk/guidance/flood-risk-assessment-standing-advice](http://www.gov.uk/guidance/flood-risk-assessment-standing-advice))

## **Notes**

The flood map for planning shows river and sea flooding data only. It doesn't include other sources of flooding. It is for use in development planning and flood risk assessments.

This information relates to the selected location and is not specific to any property within it. The map is updated regularly and is correct at the time of printing.

The Open Government Licence sets out the terms and conditions for using government data.  
<https://www.nationalarchives.gov.uk/doc/open-government-licence/version/3/>

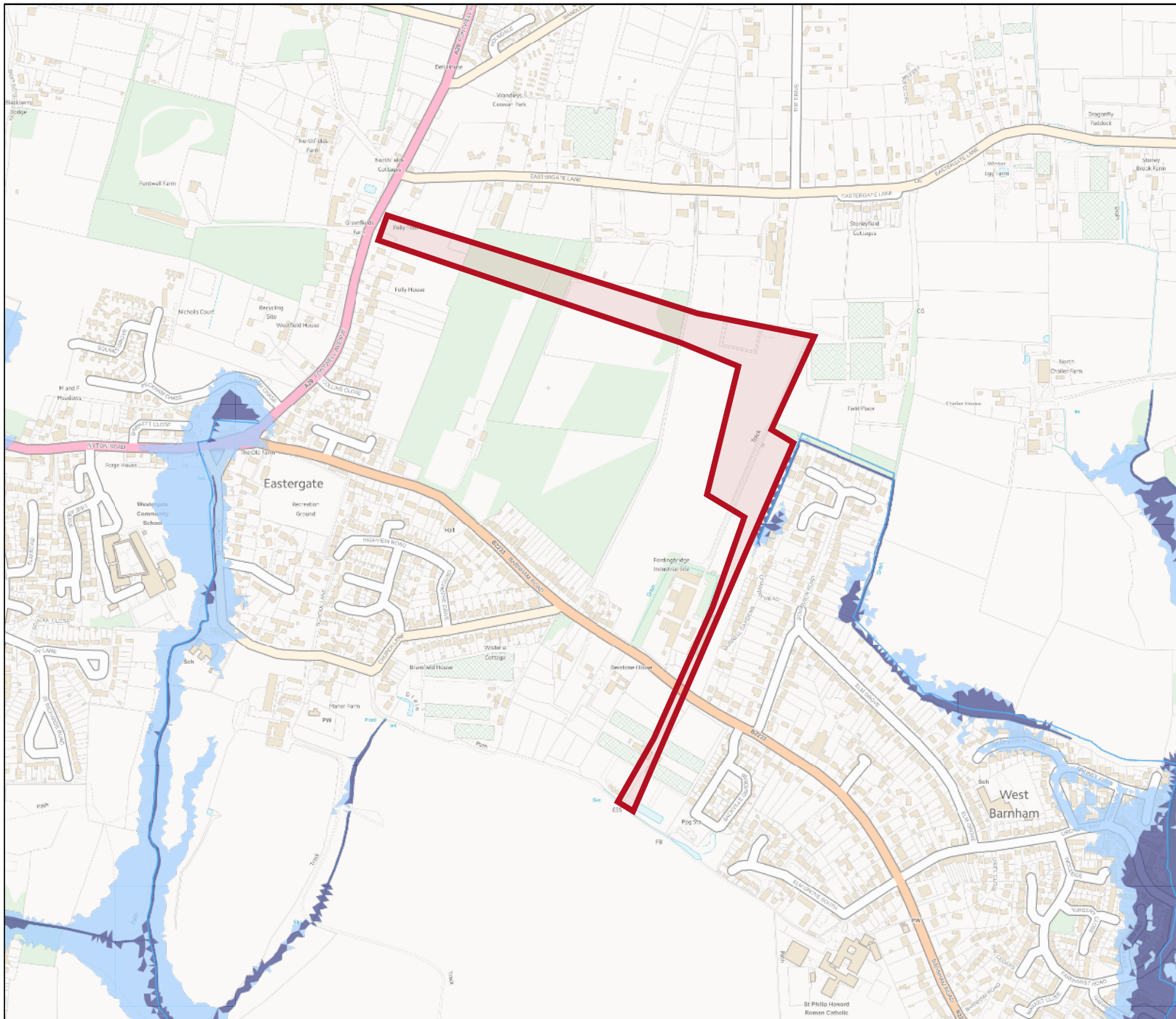
## Flood map for planning






Your reference  
**70060779**

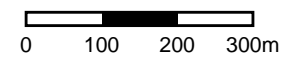
Location (easting/northing)  
**495030/105458**

Scale  
**1:10000**

Created  
**4 Jun 2020 15:03**

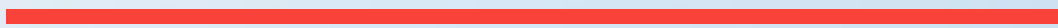


-  Selected area
-  Flood zone 3
-  Flood zone 3: areas benefiting from flood defences
-  Flood zone 2
-  Flood zone 1
-  Flood defence
-  Main river
-  Flood storage area



# Appendix F

UXO INFORMATION



# UNEXPLODED BOMB RISK MAP



## SITE LOCATION

Map Centre: 495167,105599



## LEGEND

- High:** Areas indicated as having a bombing density of 50 bombs per 1000acre or higher.
- Moderate:** Areas indicated as having a bombing density of 15 to 49 bombs per 1000acre.
- Low:** Areas indicated as having 15 bombs per 1000acre or less.

- military**
- industry**
- UXO find**
- transport**
- dock**
- Luftwaffe targets**
- utilities**
- Bombing decoy**
- other**

### How to use your Unexploded Bomb (UXB) risk map?

The map indicates the potential for Unexploded Bombs (UXB) to be present as a result of World War Two (WWII) bombing.

You can incorporate the map into your preliminary risk assessment\* for potential Unexploded Ordnance (UXO) for a site. Using this map, you can make an informed decision as to whether more in-depth detailed risk assessment\* is necessary.

### What do I do if my site is in a moderate or high risk area?

Generally, we recommend that a detailed UXO desk study and risk assessment is undertaken for sites in a moderate or high UXB risk area.

Similarly, if your site is near to a designated Luftwaffe target or bombing decoy then additional detailed research is recommended.

More often than not, this further detailed research will conclude that the potential for a significant UXO hazard to be present on your site is actually low.

**Never plan site work or undertake a risk assessment using these maps alone. More detail is required, particularly where there may be a source of UXO from other military operations which are not reflected on these maps.**

### If my site is in a low risk area, do I need to do anything?

If both the map and other research confirms that there is a low potential for UXO to be present on your site then, subject to your own comfort and risk tolerance, works can proceed with no special precautions.

A low risk really means that there is no greater probability of encountering UXO than anywhere else in the UK.

If you are unsure whether other sources of UXO may be present, you can ask for one of our **pre-desk study assessments (PDSA)**

### If I have any questions, who do I contact?

tel: **+44 (0) 1993 886682**

email: **uxo@zetica.com**

web: **www.zeticauxo.com**

The information in this UXB risk map is derived from a number of sources and should be used in conjunction with the accompanying notes on our website: (<https://zeticauxo.com/downloads-and-resources/risk-maps/>)

Zetica cannot guarantee the accuracy or completeness of the information or data used and cannot accept any liability for any use of the maps. These maps can be used as part of a technical report or similar publication, subject to acknowledgment. The copyright remains with Zetica Ltd.

It is important to note that this map is not a UXO risk assessment and should not be reported as such when reproduced.

\*Preliminary and detailed UXO risk assessments are advocated as good practice by industry guidance such as CIRIA C681 'Unexploded Ordnance (UXO), a guide for the construction industry'.





Mountbatten House  
Basing View  
Basingstoke, Hampshire  
RG21 4HJ

**wsp.com**

CONFIDENTIAL