



Viewpoint 11 from Ford Lane looking south east toward site  
 Representative viewpoint photograph. To be viewed at a comfortable arm's length and printed at A1

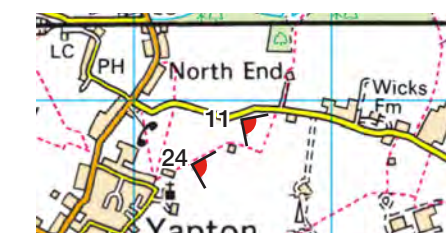


Figure 12.26  
 Representative viewpoint 11 Ford Lane  
 north west of site



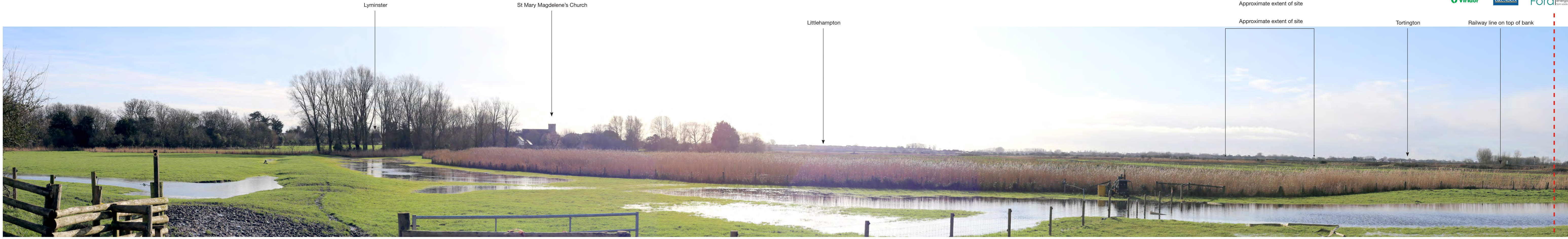


Image continues from above



Viewpoint 12 from PROW Lyminster and Crossbush 2207-1 looking west toward site  
Representative viewpoint photograph. To be viewed at a comfortable arm's length and printed at A1



Figure 12.27  
Representative viewpoint 12 PROW north of Lyminster





Viewpoint 13 from PROW Lyminster and Crossbush 2207-1 looking west toward site  
 Representative viewpoint photograph. To be viewed at a comfortable arm's length and printed at A1



Figure 12.28  
 Representative viewpoint 13 Lyminster village edge





Viewpoint 14 from PROW Ford 206-7 looking west toward site  
Representative viewpoint photograph. To be viewed at a comfortable arm's length and printed at A1

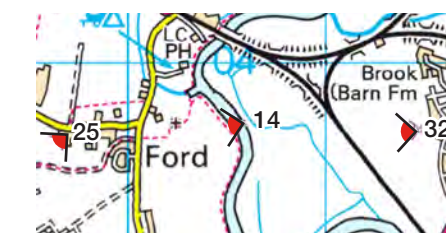


Figure 12.29  
Representative viewpoint 14 River Arun



Allocated residential land

Ford Lane industrial estate

Approximate extent of site

Industrial estates on Ford Airfield

Industrial buildings currently on site



Viewpoint 15 from Rollaston Park looking east toward site  
Representative viewpoint photograph. To be viewed at a comfortable arm's length and printed at A1

Camera: EOS 6D  
Lens: 50mm (Canon EF)  
Image scaling: Monocular  
AOD level: 7.9m AOD  
Direction of view: Northeast  
Camera height: 1.5m AGL  
Horizontal and vertical field of view: 90° x 27°  
Date: 15/01/20  
OS ref: 499066.514/103116.272  
Time: 14:54  
Projection: Cylindrical

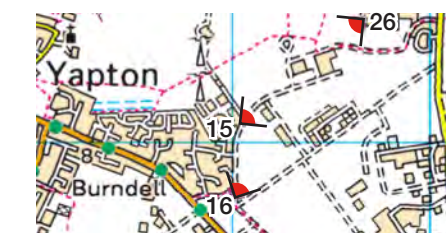


Figure 12.30  
Representative viewpoint 15 Ford Airfield



Residential properties on Rollaston Park

Industrial buildings on Ford Airfield

Approximate extent of site

Southern Water waste-water treatment works



Viewpoint 16 from PROW Ford 175-1 looking north east toward site  
Representative viewpoint photograph. To be viewed at a comfortable arm's length and printed at A1



Figure 12.31  
Representative viewpoint 16 Ford Airfield PROW





Image continues from above



Viewpoint 17 from PROW Middleton-On-Sea 2997-1 looking north east toward site  
Representative viewpoint photograph. To be viewed at a comfortable arm's length and printed at A1



Figure 12.32  
Representative viewpoint 17 North edge of Middleton-on-Sea



Littlehampton gas holder  
 High-rise block of flats in Littlehampton  
 Approximate location of site

Butlins, Bognor Regis  
 High rise flats in Bognor Regis

Public right of way  
 Boxgrove 371-2



Image continues from above

Chichester Cathedral

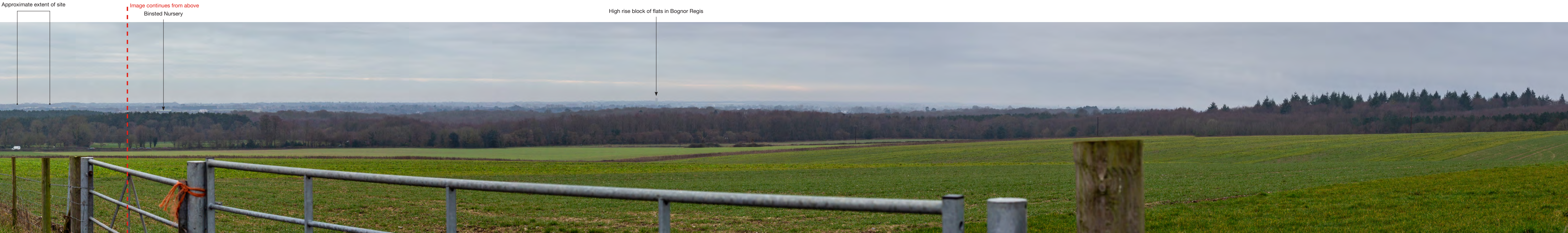
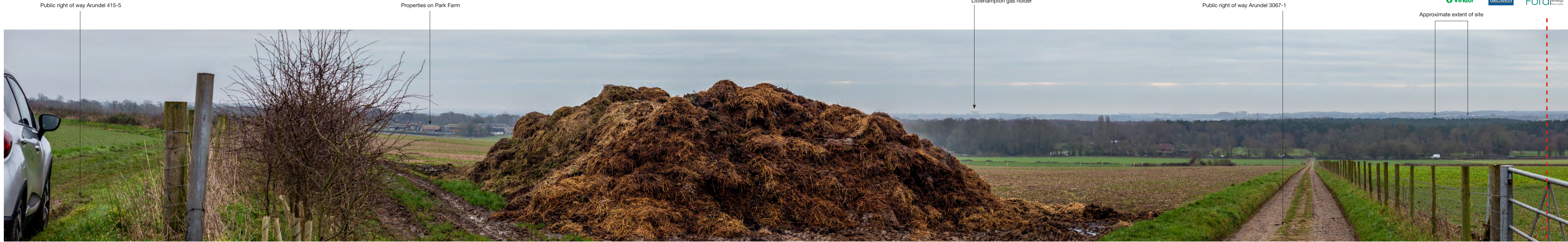


Viewpoint 18 from Halnaker Windmill, PROW Boxgrove 371-2 looking south toward site  
 Representative viewpoint photograph. To be viewed at a comfortable arm's length and printed at A1



Figure 12.33  
 Representative viewpoint 18 SDNP Halnaker Hill





Viewpoint 19 from junction of PROWs Arundel 3067-1, 415-4 and 415-5 looking south toward site  
 Representative viewpoint photograph. To be viewed at a comfortable arm's length and printed at A1

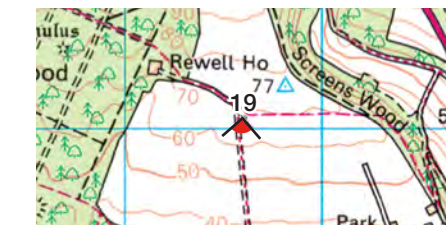


Figure 12.34  
 Representative viewpoint 19 SDNP PROW way north of site



Public right of way Barnham 146-2

Approximate extent of site



Viewpoint 20 from PROW Barnham 146-2 looking east toward site  
 Representative viewpoint photograph. To be viewed at a comfortable arm's length and printed at A1



Figure 12.35  
 Representative viewpoint 20 PROW south of Barnham