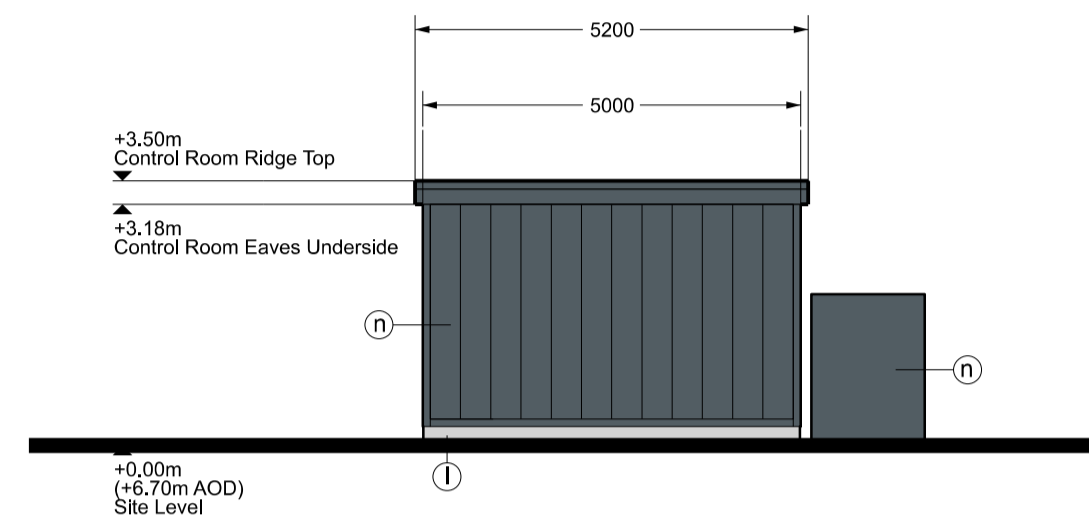
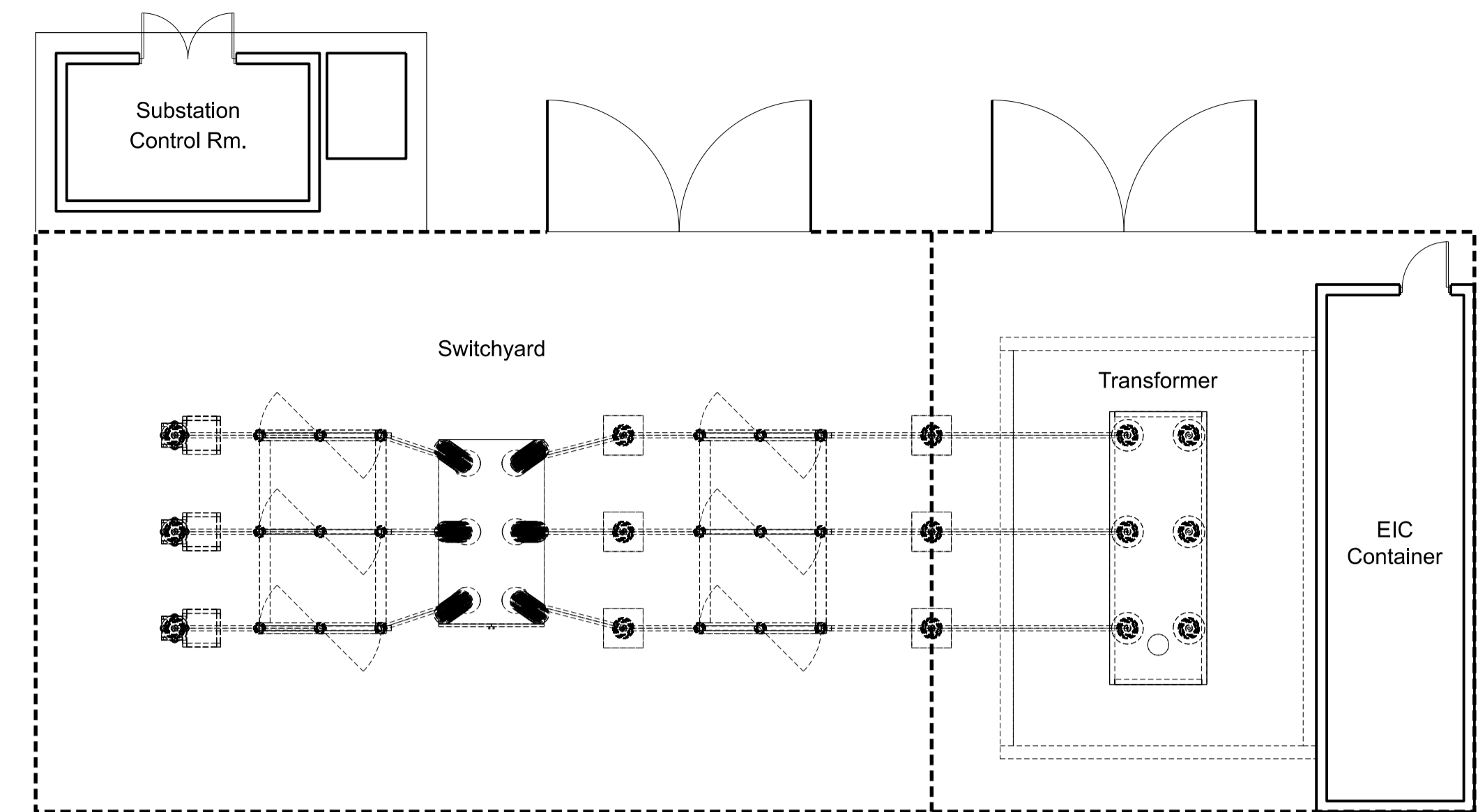


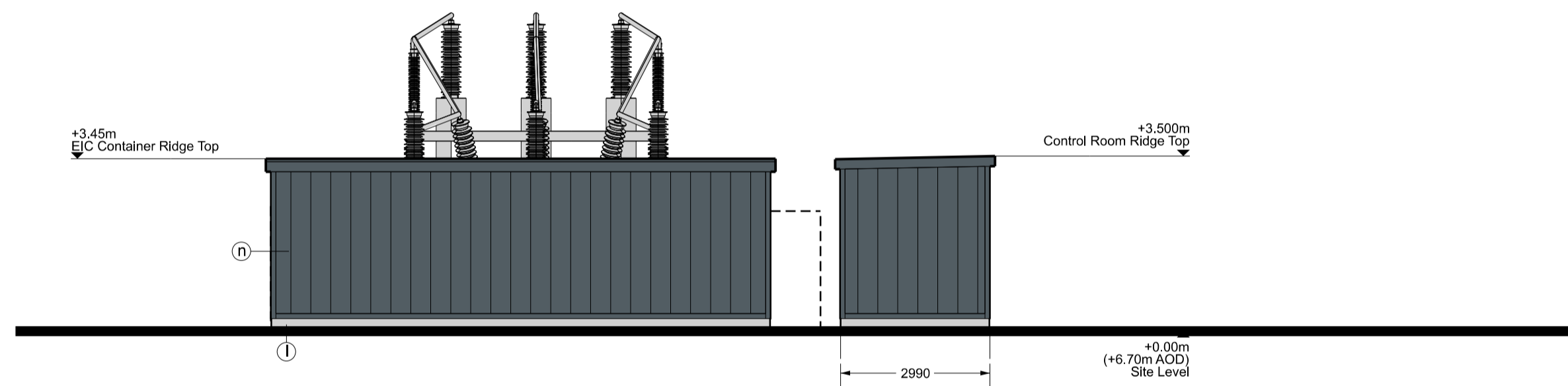
West Elevation (Control Rm. Only)



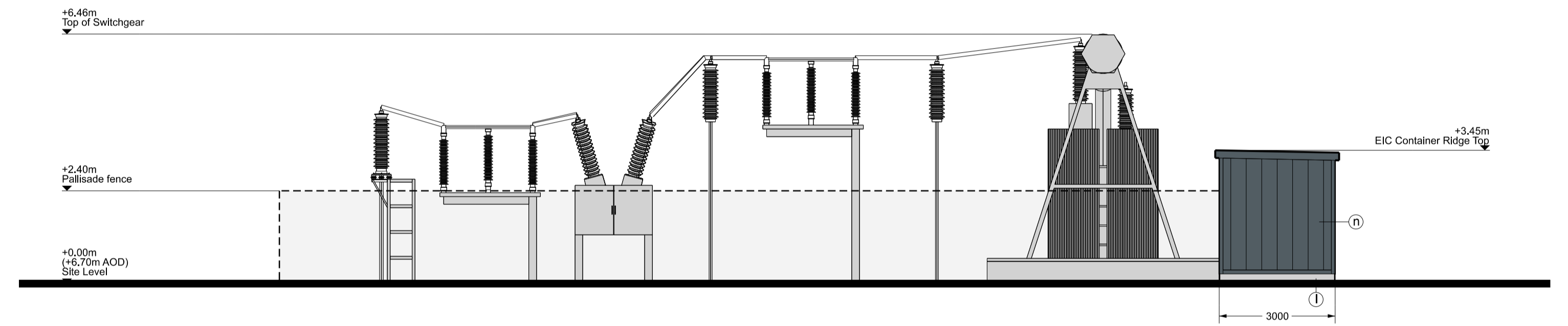
East Elevation (Control Rm. Only)



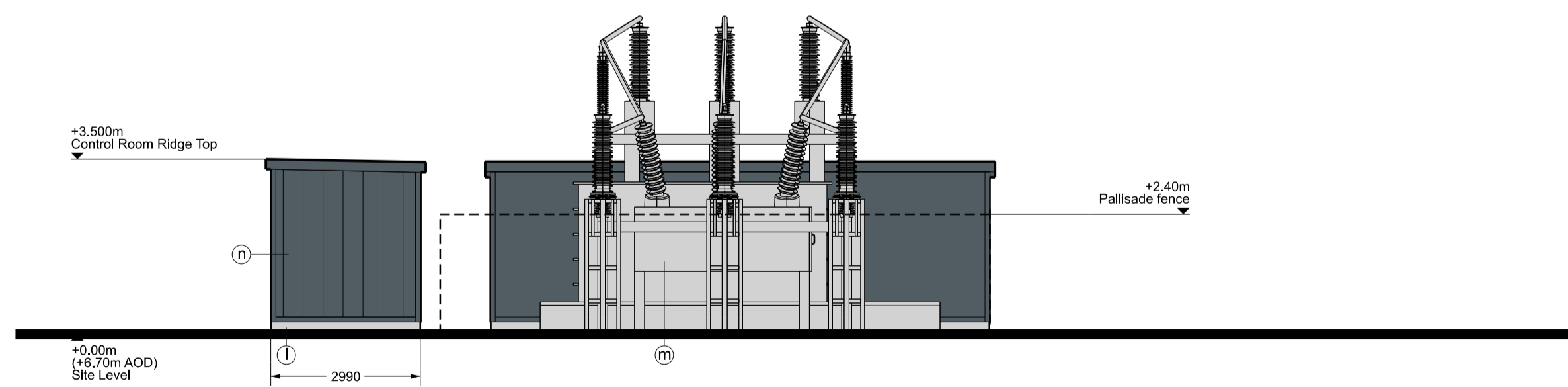
Control Rm. and Compound Plan



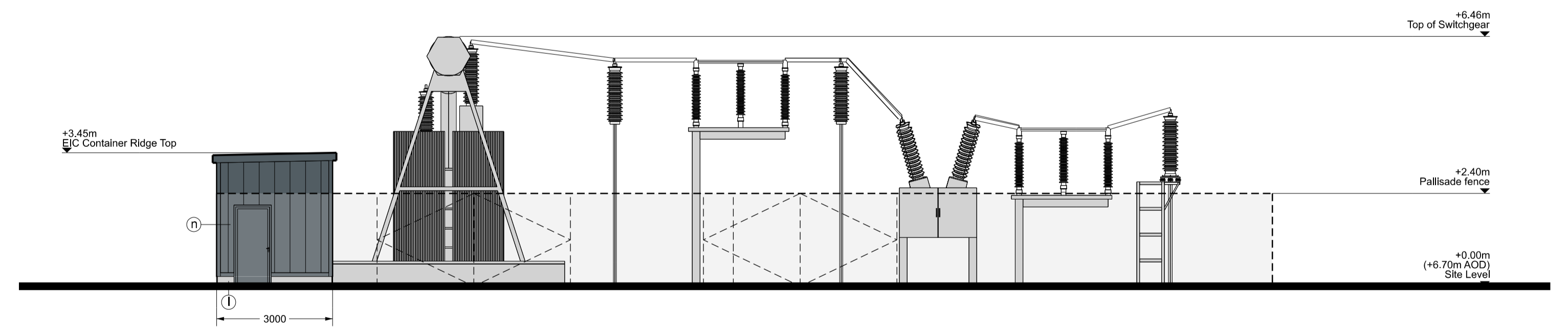
North Elevation



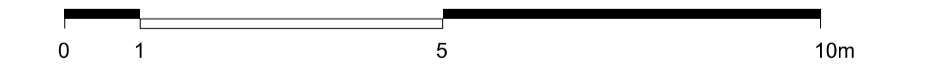
East Elevation



South Elevation



West Elevation



NOTE

- THIS DRAWING IS COPYRIGHT GSDA LTD.
- THE CONTRACTOR MUST NOT SCALE FROM THE DRAWING ALL DIMENSIONS TO BE TAKEN FROM DIMENSION STRINGS.
- WHERE ANY DISCREPANCIES ARE FOUND BETWEEN DIMENSIONS THESE MUST BE BROUGHT TO THE ATTENTION OF THE ARCHITECTS FOR RESOLUTION.
- WHERE DISCREPANCIES EXIST BETWEEN REFERENCE OR ASSEMBLY DRAWINGS & DETAIL DRAWINGS, THE LATTER TAKE PREFERENCE.

LEGEND

- |                                                                                   |                                                                                                |                                                                                                                              |                                                                                  |
|-----------------------------------------------------------------------------------|------------------------------------------------------------------------------------------------|------------------------------------------------------------------------------------------------------------------------------|----------------------------------------------------------------------------------|
| (a) Eurodad Vieo Cladding System / flashing<br>Colour: Seren Copper               | (t) Knapped Flint Wall                                                                         | (p) PPC aluminium framed curtain walling,<br>glazing and personnel doors<br>Colour: Anthracite (RAL 7016)                    | (v) Metal trapezoidal profile roof cladding<br>Colour: Goosewing Grey (RAL 7038) |
| (b) Eurodad Vieo Cladding System / flashing<br>Colour: Seren Silver               | (l) Metal roller shutter doors<br>Colour: Anthracite (RAL 7016)                                | (q) PPC aluminium personnel doors<br>Colour: Albatross (RAL 240 80 05)                                                       | (w) Flat roofing - Single ply membrane<br>system. Colour: Lead Grey              |
| (c) Composite metal wall cladding / flashing<br>Colour: Anthracite (RAL 7016)     | (k) Metal roller shutter doors<br>Colour: Albatross (RAL 240 80 05)                            | (r) Curtain walling glass spandrel panels<br>Colour: Alaska Grey (RAL 7000) (r1)<br>Colour: Merlin Grey (RAL 190 40 05) (r2) | (x) Flat roofing - Single ply membrane<br>system. Colour: Light Grey             |
| (d) Composite metal wall cladding / flashing<br>Colour: Albatross (RAL 240 80 05) | (i) In situ / pre fab concrete plinths,<br>bunds etc                                           | (s) Engineering brick plinth<br>Colour: Staffordshire Slate Blue Smooth<br>(from lbstock)                                    | (y) Profilfit glass cladding system                                              |
| (e) PPC aluminium louvres,<br>Colour: Seren Silver                                | (m) PPC metal stack casing, metal<br>ducting, tanks and silos<br>Colour: Oyster (RAL 7035)     | (u) Flat paint / PPC finish<br>Colour: Albatross (RAL 240 80 05)                                                             | (z) Rooflights                                                                   |
| (f) PPC aluminium louvres,<br>Colour: Albatross (RAL 240 80 05)                   | (n) PPC metal stack casing, metal<br>ducting, tanks and silos<br>Colour: Anthracite (RAL 7016) | (v) Metal trapezoidal profile roof cladding<br>Colour: Anthracite (RAL 7016)                                                 | (aa) Polycarbonate wall and roof panels<br>Colour: Clear                         |
| (g) PPC aluminium louvres,<br>Colour: Anthracite (RAL 7016)                       |                                                                                                |                                                                                                                              | (ab) Galvanised steel                                                            |
- Note: All materials, finishes and colours will be as stated or similar approved.

PROJECT		FORD CIRCULAR TECHNOLOGY PARK			
DRAWING		Substation and Transformer Plan and Elevations			
FOR PLANNING		-	20/06/10	Issued for planning	
1:100@A1 SCALE	20/06/10 DATE				
1404 PL356 DWG. NO.	- REVISION				

**GSDA**  
GARRY STEWART DESIGN ASSOCIATES  
Highlands House, Office 300A, 165 The  
Broadway, Wimbledon, London, SW19 1NE  
T: 020 8544 8085