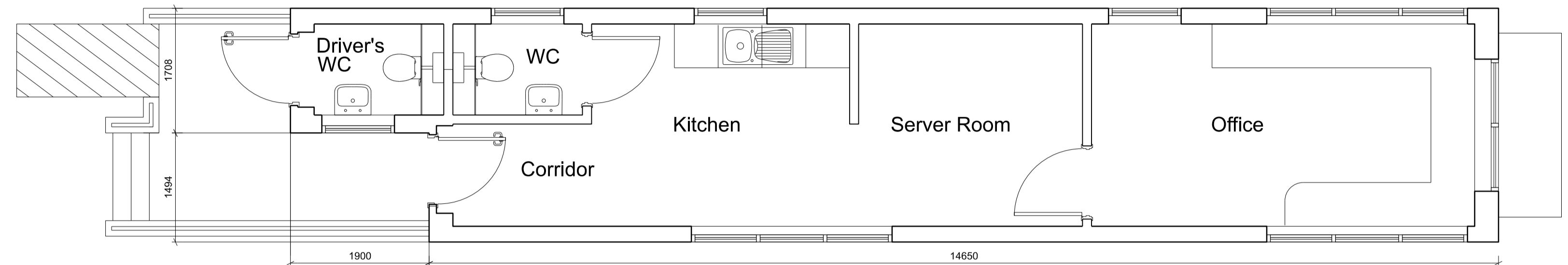
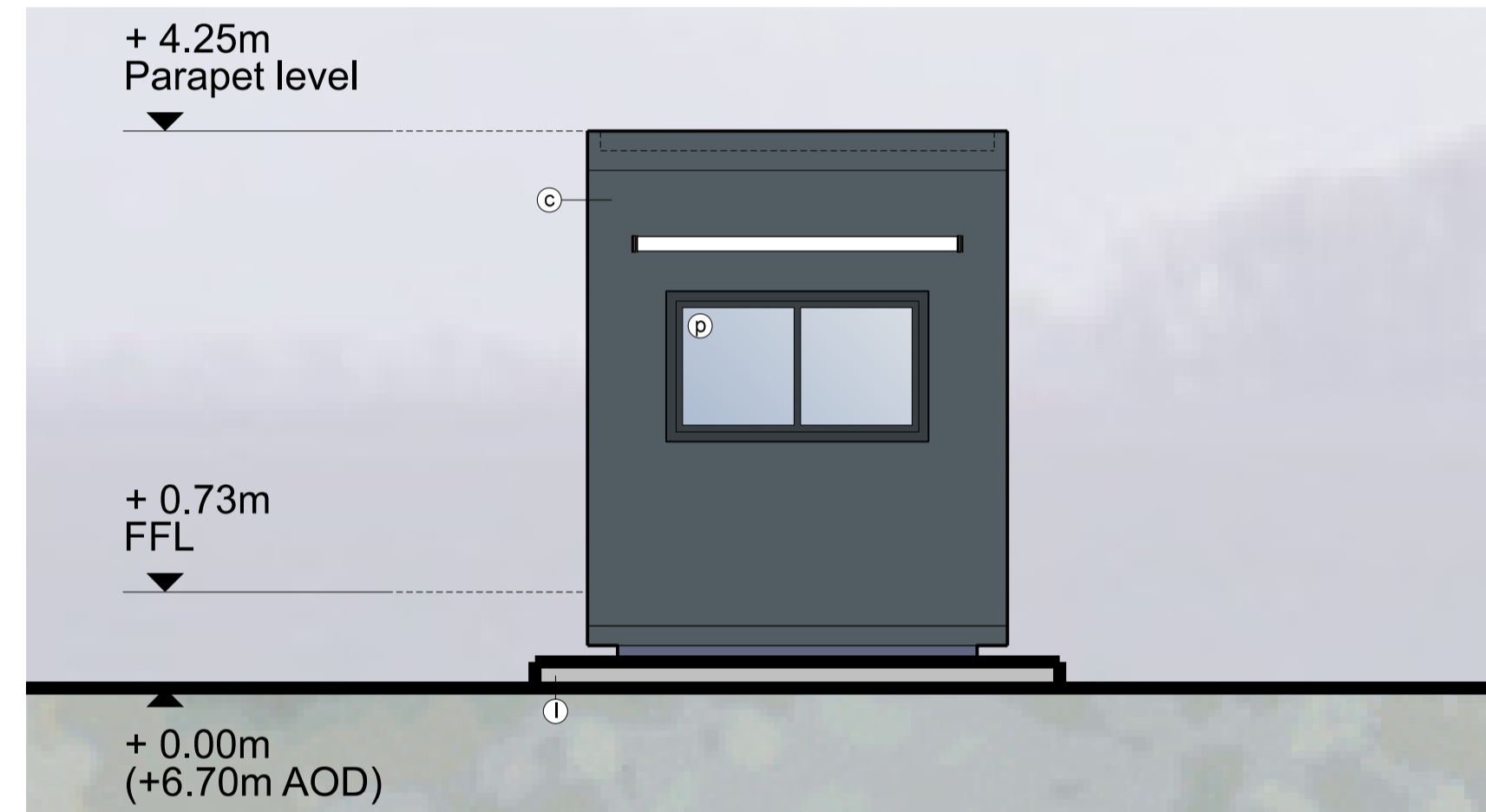


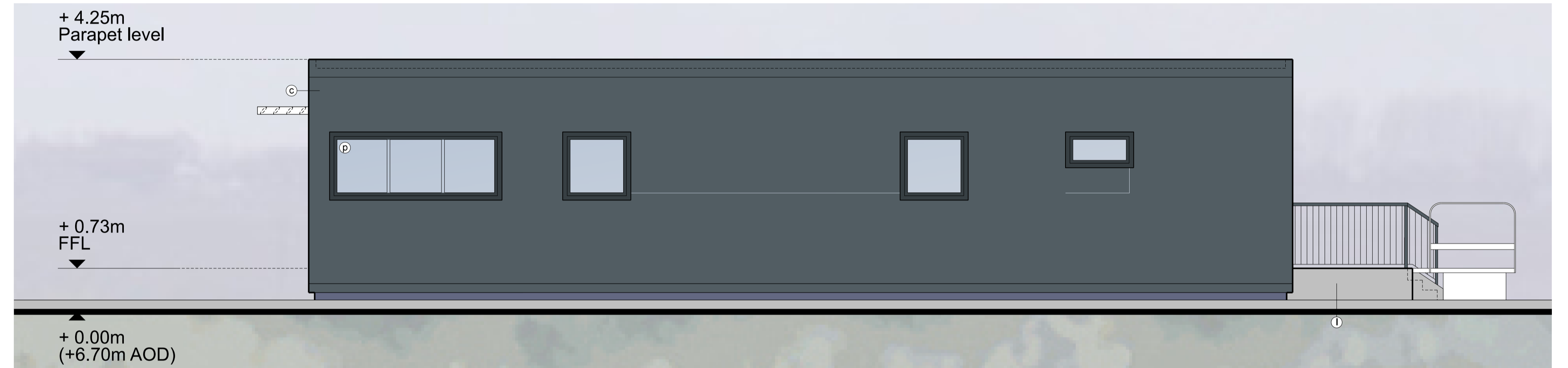
Roof Plan



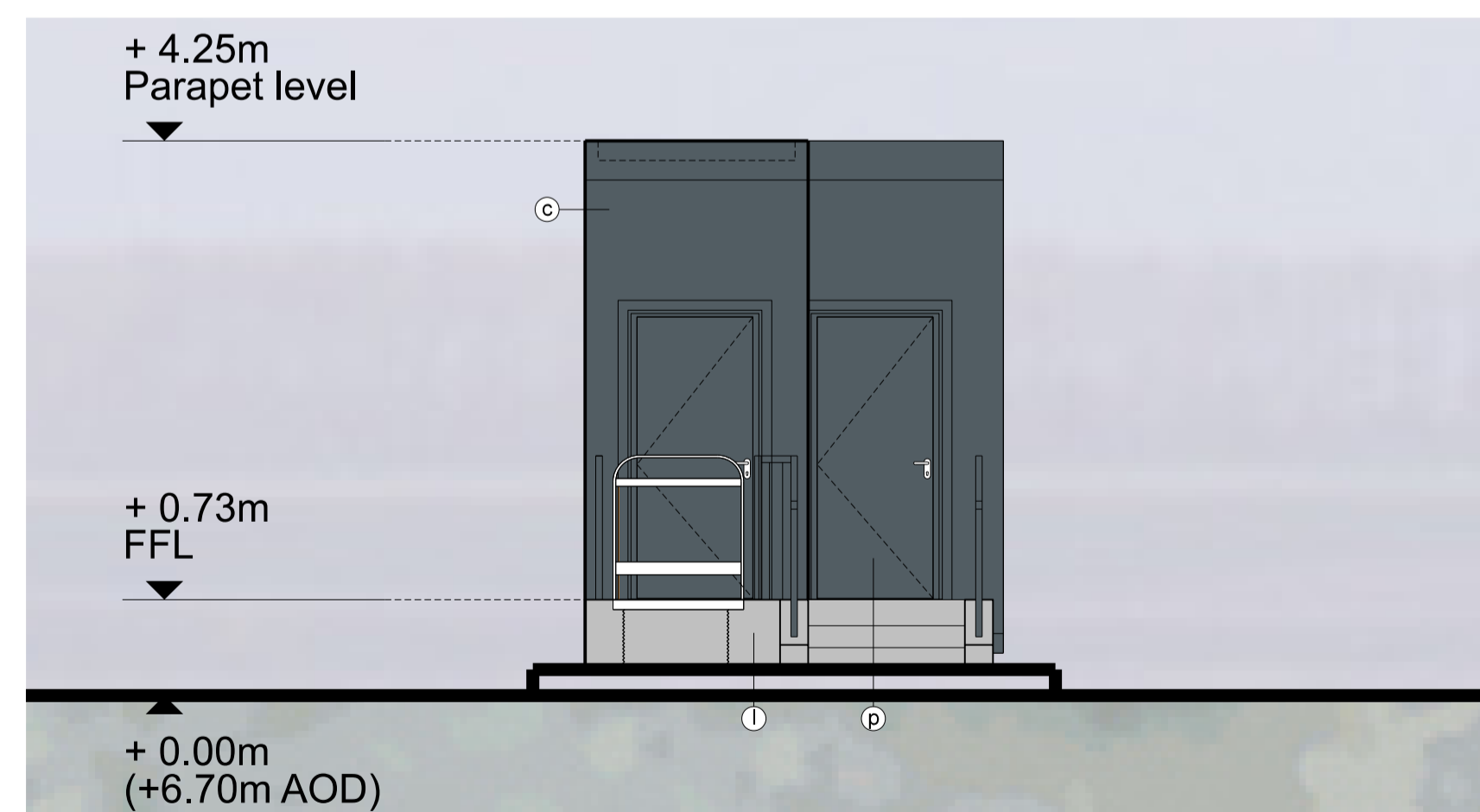
Internal Layout Plan



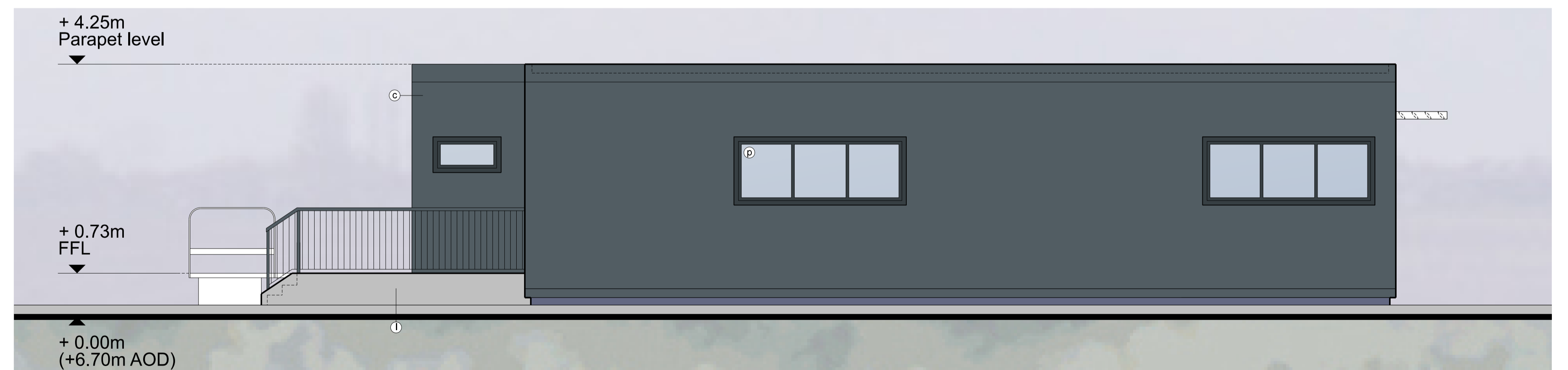
East Elevation



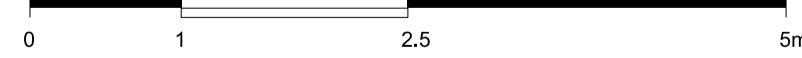
North Elevation



West Elevation



South Elevation



NOTE

- THIS DRAWING IS COPYRIGHT GSDA LTD.
- THE CONTRACTOR MUST NOT SCALE FROM THE DRAWING ALL DIMENSIONS TO BE TAKEN FROM DIMENSION STRINGS.
- WHERE ANY DISCREPANCIES ARE FOUND BETWEEN DIMENSIONS THESE MUST BE BROUGHT TO THE ATTENTION OF THE ARCHITECTS FOR RESOLUTION.
- WHERE DISCREPANCIES EXIST BETWEEN REFERENCE OR ASSEMBLY DRAWINGS & DETAIL DRAWINGS, THE LATTER TAKE PREFERENCE.

LEGEND

- |   |   |  |
|---|---|--|
| <ul style="list-style-type: none"> <li>(a) Eurodad Vieo Cladding System / flashing Colour: Seren Copper</li> <li>(b) Eurodad Vieo Cladding System / flashing Colour: Seren Silver</li> <li>(c) Composite metal wall cladding / flashing Colour: Anthracite (RAL 7016)</li> <li>(d) Composite metal wall cladding / flashing Colour: Albatross (RAL 240 80 05)</li> <li>(e) PPC aluminium louvres, Colour: Seren Silver</li> <li>(f) PPC aluminium louvres, Colour: Albatross (RAL 240 80 05)</li> <li>(g) PPC aluminium louvres, Colour: Anthracite (RAL 7016)</li> </ul> | <ul style="list-style-type: none"> <li>(h) Knapped Flint Wall</li> <li>(i) Metal roller shutter doors Colour: Anthracite (RAL 7016)</li> <li>(j) Metal roller shutter doors Colour: Albatross (RAL 240 80 05)</li> <li>(k) Metal roller shutter doors Colour: Oyster (RAL 7035)</li> <li>(l) In situ / pre fab concrete plinths, bunds etc</li> <li>(m) PPC metal stack casing, metal ducting, tanks and silos Colour: Oyster (RAL 7035)</li> <li>(n) PPC metal stack casing, metal ducting, tanks and silos Colour: Anthracite (RAL 7016)</li> </ul> | <ul style="list-style-type: none"> <li>(o) PPC aluminium framed curtain walling, glazing and personnel doors Colour: Anthracite (RAL 7016)</li> <li>(p) PPC aluminium personnel doors Colour: Albatross (RAL 240 80 05)</li> <li>(q) Curtain walling glass spandrel panels Colour: Alaska Grey (RAL 7000) (r1) Colour: Merin Grey (RAL 190 40 05) (r2)</li> <li>(r) Engineering brick plinth Colour: Staffordshire Slate Blue Smooth (from Ibstock)</li> <li>(s) Flat paint / PPC finish Colour: Albatross (RAL 240 80 05)</li> <li>(t) Metal trapezoidal profile roof cladding Colour: Anthracite (RAL 7016)</li> <li>(u) Metal trapezoidal profile roof cladding Colour: Goosewing Grey (RAL 7038)</li> <li>(v) Flat roofing - Single ply membrane system, Colour: Lead Grey</li> <li>(w) Flat roofing - Single ply membrane system, Colour: Light Grey</li> <li>(x) Rooflights</li> <li>(y) Polycarbonate wall and roof panels Colour: Clear</li> <li>(z) Galvanised steel</li> </ul> |
|---|---|--|
- Note: All materials, finishes and colours will be as stated or similar approved.

PROJECT		FORD CIRCULAR TECHNOLOGY PARK	
DRAWING		ERF Weighbridge Gatehouse Plans and Elevations	
FOR PLANNING		-	20/06/10 Issued for planning
1:50@A1, 1:100@A3	SCALE	20/06/10	DATE
1404 PL351	DWG. NO.	-	REVISION

**GSDA**  
GARRY STEWART DESIGN ASSOCIATES  
Highlands House, Office 300A, 165 The Broadway, Wimbledon, London, SW19 1NE  
T. 020 8544 8085