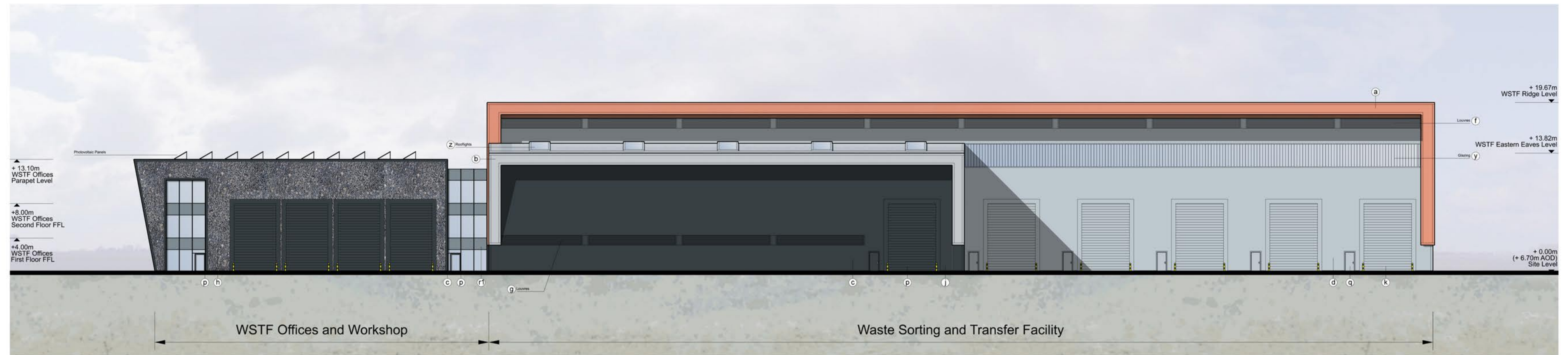




North Elevation



East Elevation



NOTE

- THIS DRAWING IS COPYRIGHT GSDA LTD.
- THE CONTRACTOR MUST NOT SCALE FROM THE DRAWING ALL DIMENSIONS TO BE TAKEN FROM DIMENSION STRINGS.
- WHERE ANY DISCREPANCIES ARE FOUND BETWEEN DIMENSIONS THESE MUST BE BROUGHT TO THE ATTENTION OF THE ARCHITECTS FOR RESOLUTION.
- WHERE DISCREPANCIES EXIST BETWEEN REFERENCE OR ASSEMBLY DRAWINGS & DETAIL DRAWINGS, THE LATTER TAKE PREFERENCE.

LEGEND

- | | | | |
|--|---|--|---|
| a) Euroclad Vio Cladding System / flashing
Colour: Seren Copper | f) Knapped Flint Wall | p) PPC aluminium framed curtain walling,
glazing and personnel doors
Colour: Anthracite (RAL 7016) | v) Metal trapezoidal profile roof cladding
Colour: Goosewing Grey (RAL 7038) |
| b) Euroclad Vio Cladding System / flashing
Colour: Seren Silver | g) Metal roller shutter doors
Colour: Anthracite (RAL 7016) | q) PPC aluminium personnel doors
Colour: Albatross (RAL 240 80 05) | w) Flat roofing - Single ply membrane
system Colour: Lead Grey |
| c) Composite metal wall cladding / flashing
Colour: Anthracite (RAL 7016) | h) Metal roller shutter doors
Colour: Albatross (RAL 240 80 05) | r) Curtain walling glass spandrel panels
Colour: Alaska Grey (RAL 7000) (r1)
Colour: Merin Grey (RAL 190 40 05) (r2) | x) Flat roofing - Single ply membrane
system Colour: Light Grey |
| d) Composite metal wall cladding / flashing
Colour: Albatross (RAL 240 80 05) | i) In situ / pre fab concrete plinths,
bunds etc | s) Engineering brick plinth
Colour: Staffordshire Slate Blue Smooth
(from Istock) | y) Profillit glass cladding system |
| e) PPC aluminium louvres,
Colour: Seren Silver | m) PPC metal stack casing, metal
ducting, tanks and silos
Colour: Oyster (RAL 7035) | t) Flat paint / PPC finish
Colour: Albatross (RAL 240 80 05) | z) Rooflights |
| f) PPC aluminium louvres,
Colour: Albatross (RAL 240 80 05) | n) PPC metal stack casing, metal
ducting, tanks and silos
Colour: Anthracite (RAL 7016) | u) Metal trapezoidal profile roof cladding
Colour: Anthracite (RAL 7016) | aa) Polycarbonate wall and roof panels
Colour: Clear |
| g) PPC aluminium louvres,
Colour: Anthracite (RAL 7016) | | | bb) Galvanised steel |
- Note: All materials, finishes and colours will be as stated or similar approved.

PROJECT		FORD CIRCULAR TECHNOLOGY PARK			
DRAWING		WSTF North and East Elevations			
FOR PLANNING		-	20/06/10	Issued for planning	
1:250@A1 SCALE	20/06/10 DATE				
1404 PL305 DWG. NO.	- REVISION				

GSDA
GARRY STEWART DESIGN ASSOCIATES
Highlands House, Office 300A, 165 The
Broadway, Wimbledon, London, SW19 1NE
T. 020 8544 8085