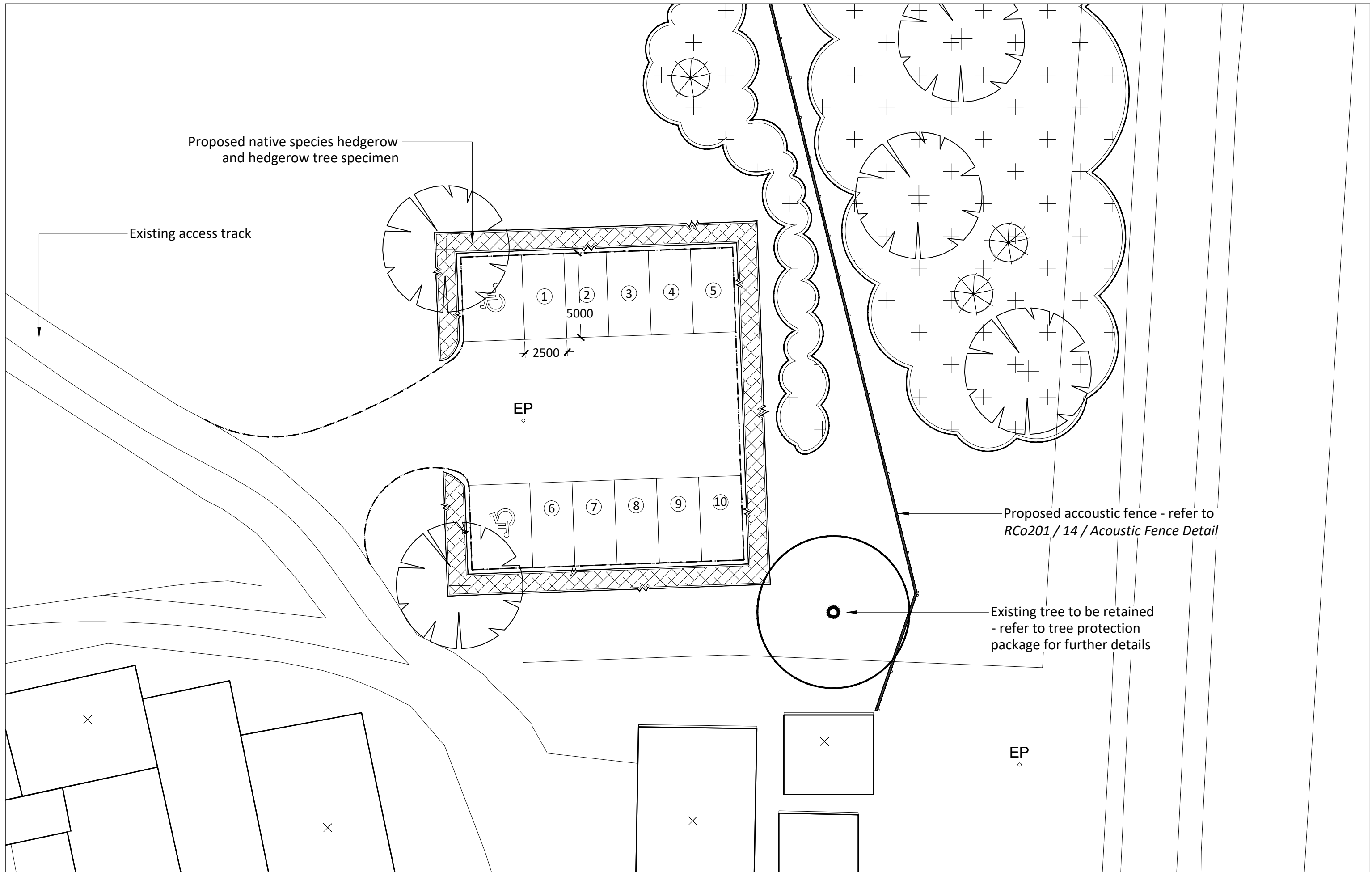
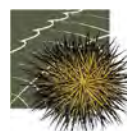


APPENDIX 6

**DRAWING NO: RCO 201/15 -
PUBLIC CAR PARK LAYOUT**



REV	DESCRIPTION	DATE	INITIALS



Ramsay & Co
Landscape Architecture

The Studio, 68 Cuckfield Road, Hurstpierpoint, West Sussex, BN6 9SB
 T: 01273 834 198 M: 07973 770047 E: landscape@ramsayandco.com www.ramsayandco.com

Project Title Knepp Castle Estate: Proposed Landform Enhancements	Scale 1:200@A3	Initials AR	Date 06-02-20
Drawing Title Public Car Park Layout	Drawing Number RCo201 / 15	Revision 00	