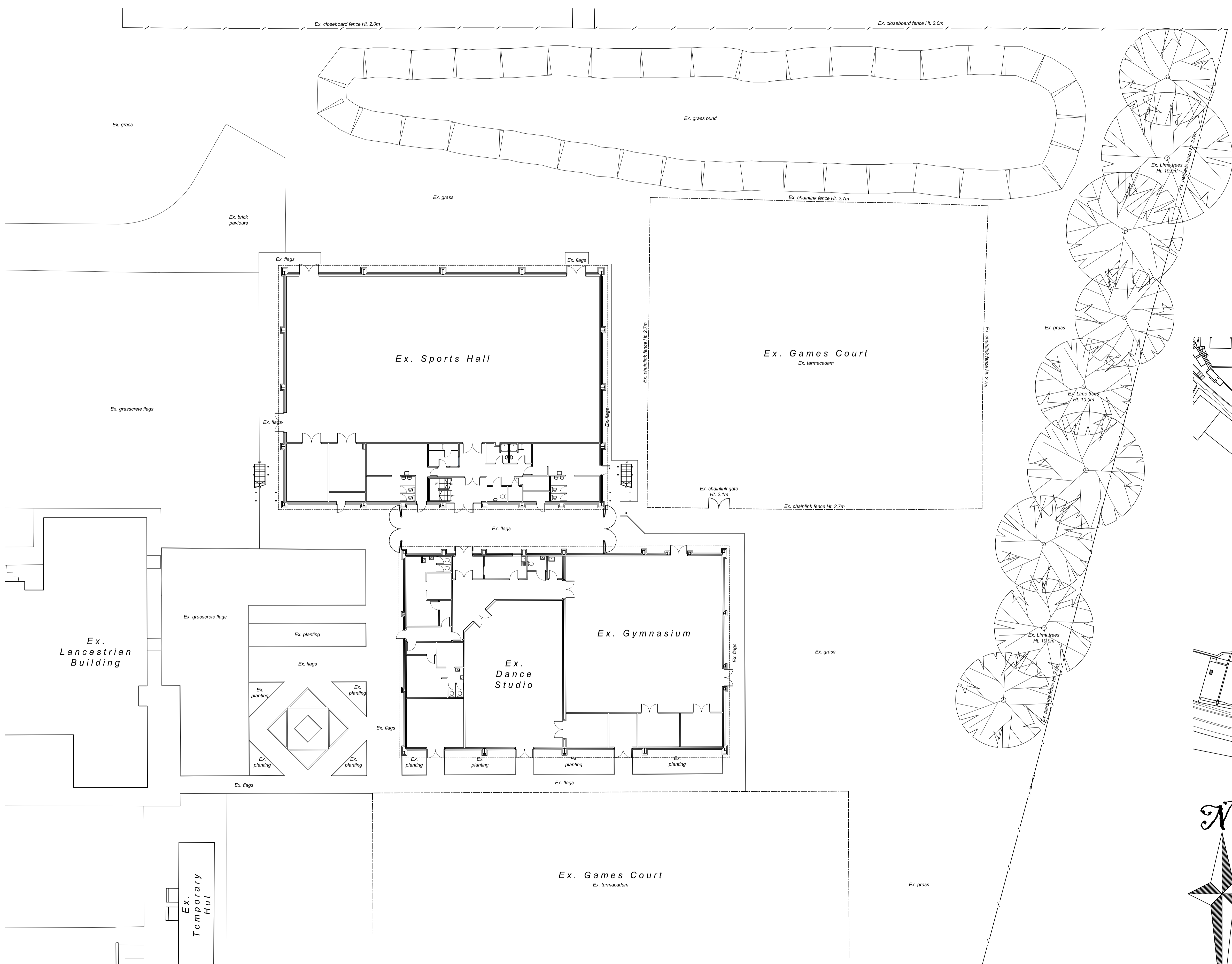
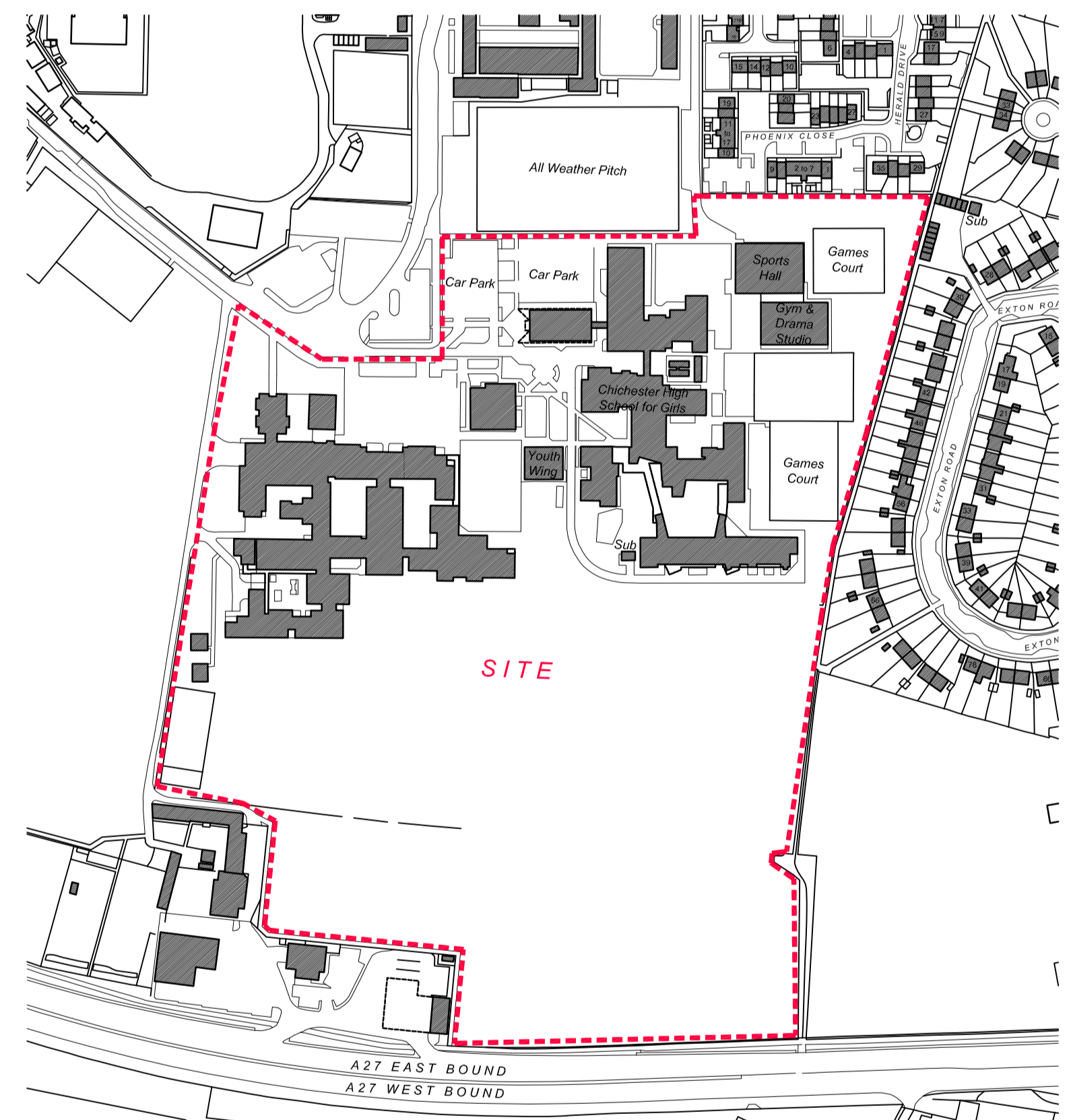


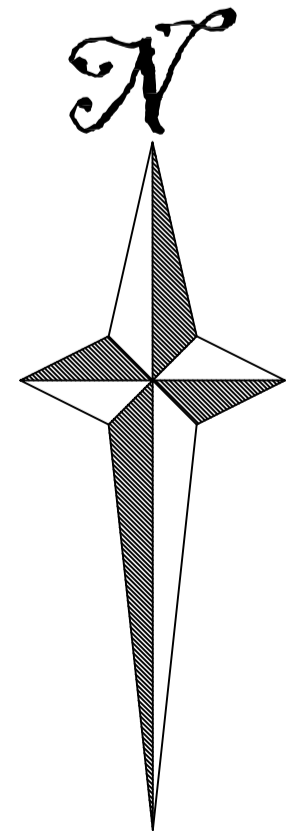
NOTE -  
 DO NOT SCALE FROM THIS DRAWING.  
 ALL DIMENSIONS RELATING TO SUBCONTRACTORS OR SUPPLIERS WORK MUST BE CHECKED AND AGREED BETWEEN THE GENERAL CONTRACTOR AND THE SUBCONTRACTORS AND SUPPLIERS.  
 ALL DIMENSIONS ARE IN MILLIMETRES. IF IN DOUBT ASK.  
 THIS DRAWING MAY BE SCALED FOR PLANNING PURPOSES ONLY.  
 ALL WORKS OR MATERIALS INDICATED ON THE DRAWING ARE TO BE TO THE LATEST BRITISH STANDARDS AND ARE TO BE CARRIED OUT IN ACCORDANCE WITH THE RELEVANT CODES OF PRACTICE OR RECOGNISED TRADE ASSOCIATION RECOMMENDATIONS AND PUBLICATIONS.  
 © THIS DRAWING IS THE COPYRIGHT OF NASH AND PARTNERS LTD.




Block Plan  
 Scale 1:1000



Location Plan  
 Scale 1:2500



#	13-06-08	DMG	Drawing first issued.
Rev	Date	Auth	Description
LOCATION: Chichester High School for Girls, Kingsham Road, Chichester, West Sussex, PO19 8EB.			
DRAWING: Proposed Extension Works, Ex. Site, Block & Location Plans.			
Date	13-06-08	Drawn By	DMG
Scale	1:200, 1000, 2500, @		A1
Drawing No	1104/SU-01	Revision	#
NASH & PARTNERS LIMITED Station Approach Southgate Chichester West Sussex PO19 8EQ Tel +44 (0) 1243 815720 Fax +44 (0) 1243 784419 Email office@nashpl.com www.nashpl.com			
 ARCHITECTS SURVEYORS PROJECT MANAGERS PROPERTY CONSULTANTS			
<small>CAD file name: 1104_SU01_EX_SITE_BLOCK &amp; LOCATION PLANS_REV 00.dwg</small>			

Scale Bar 1:200