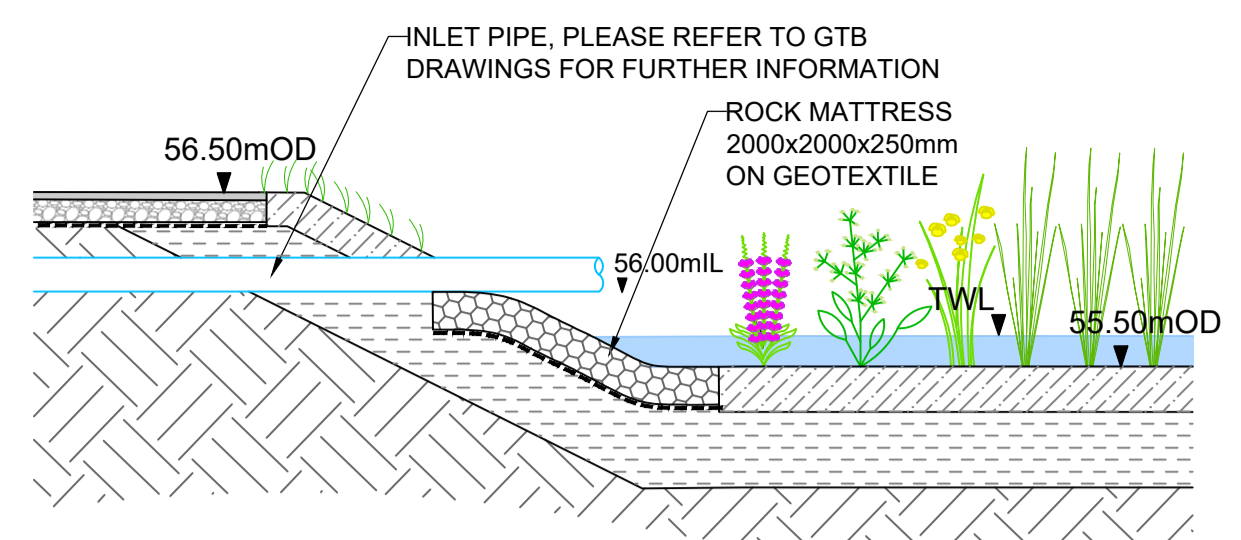
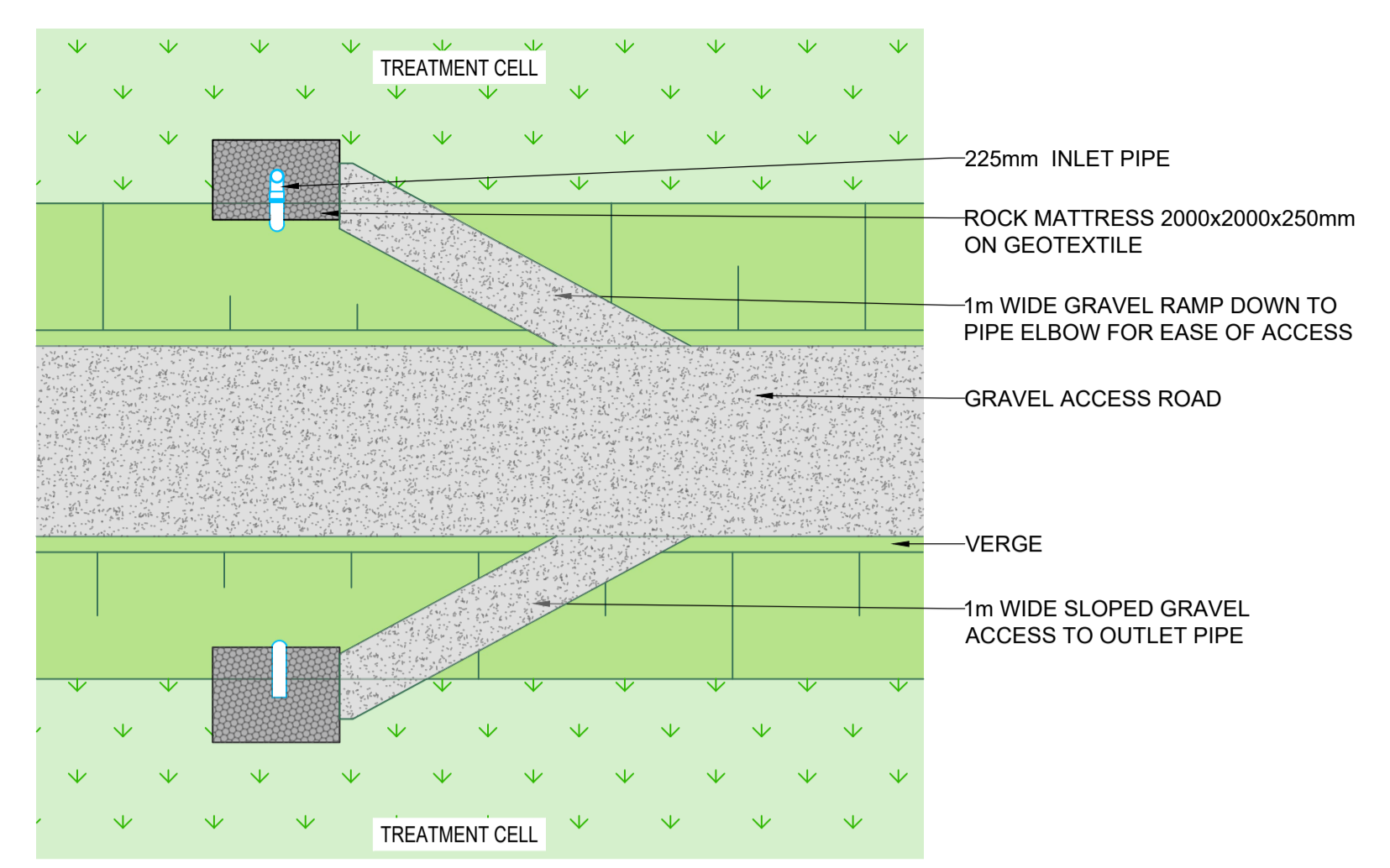


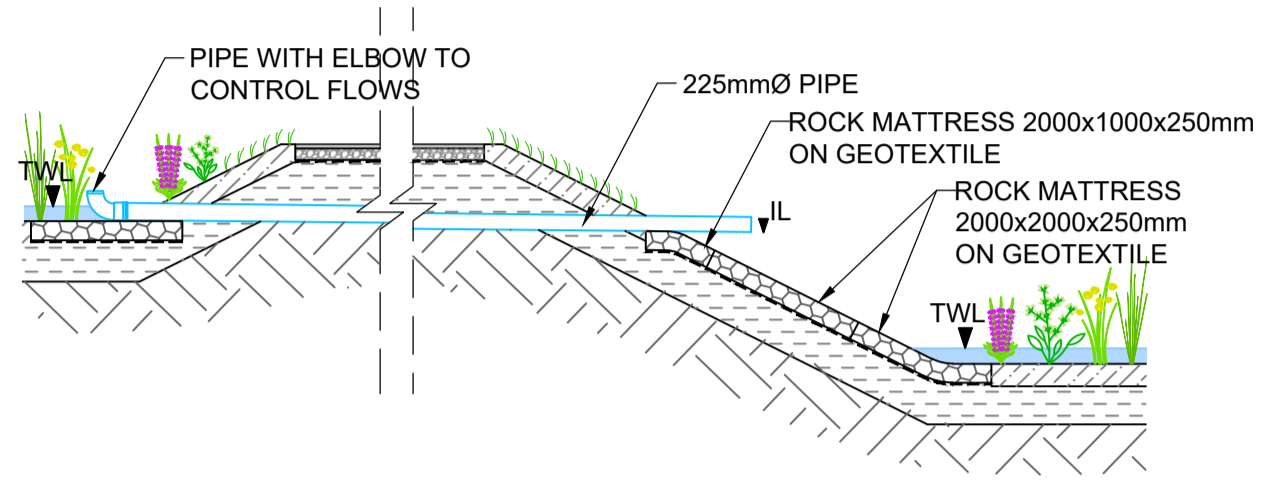
A: TYPICAL DETAIL OF OUTSIDE EMBANKMENT  
SCALE 1:100



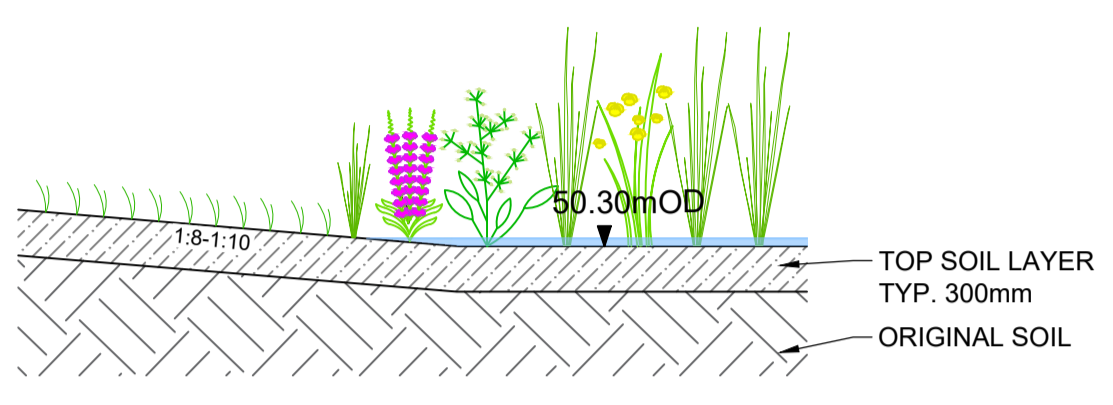
B: INLET INTO CELL 1 DETAIL  
SCALE 1:50



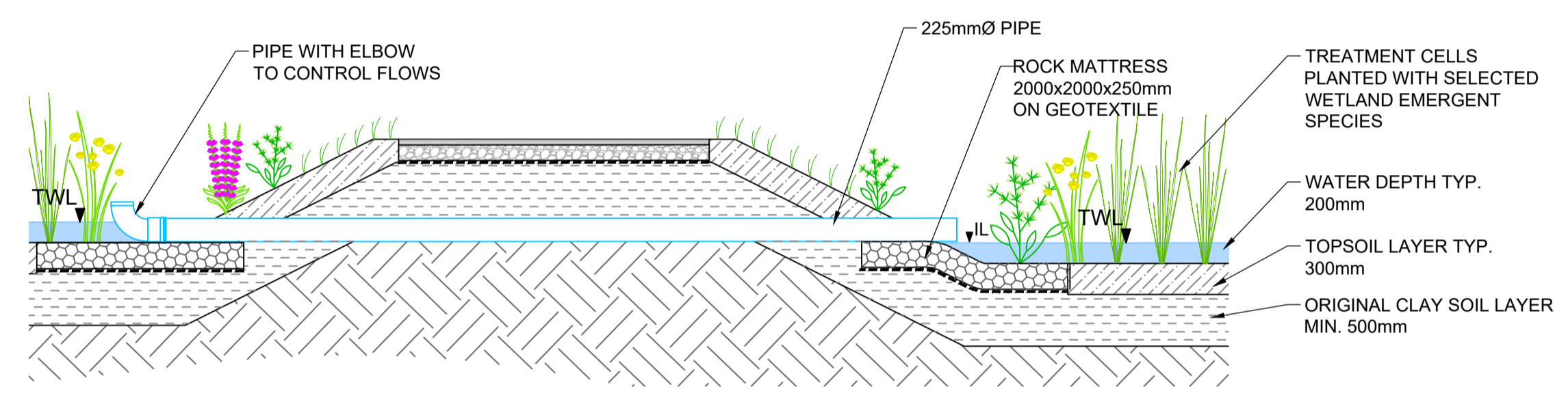
E: TYPICAL DETAIL OF INLET/OUTLET PIPE ACCESS ROAD  
SCALE 1:100



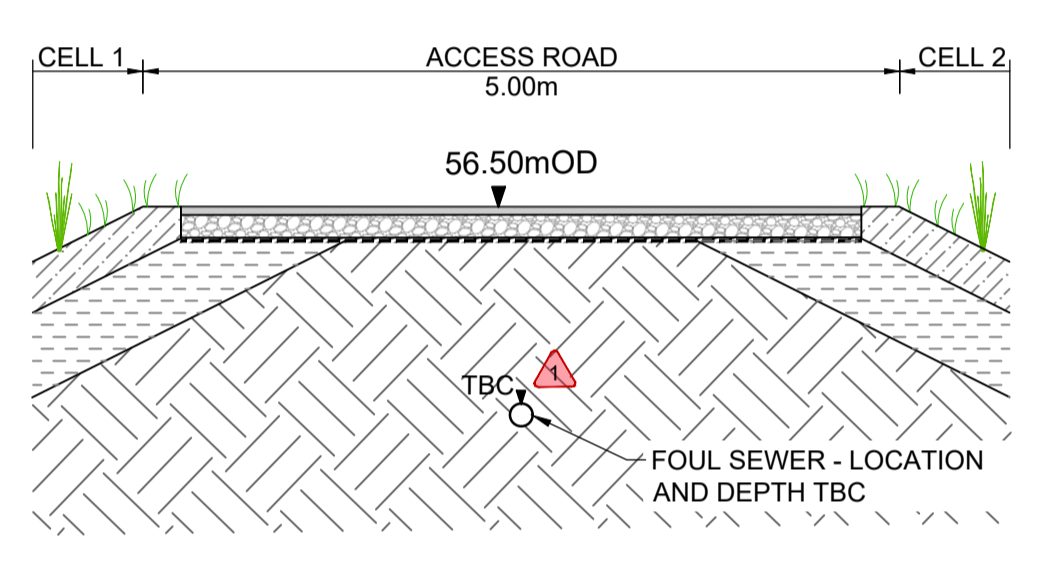
C: PIPE BETWEEN CELL 2 AND CELL 3 DETAIL  
SCALE 1:100



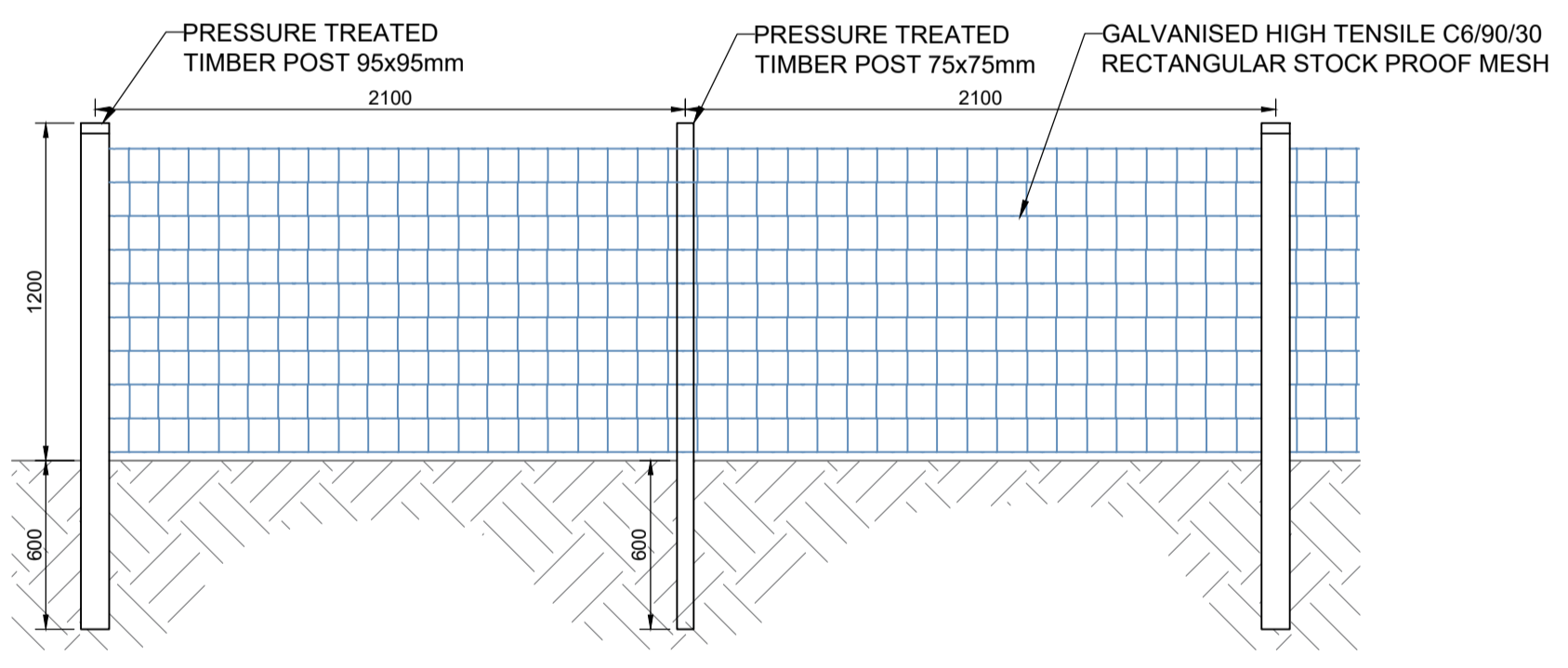
D: FLOOD MITIGATION AREA DETAIL  
SCALE 1:50



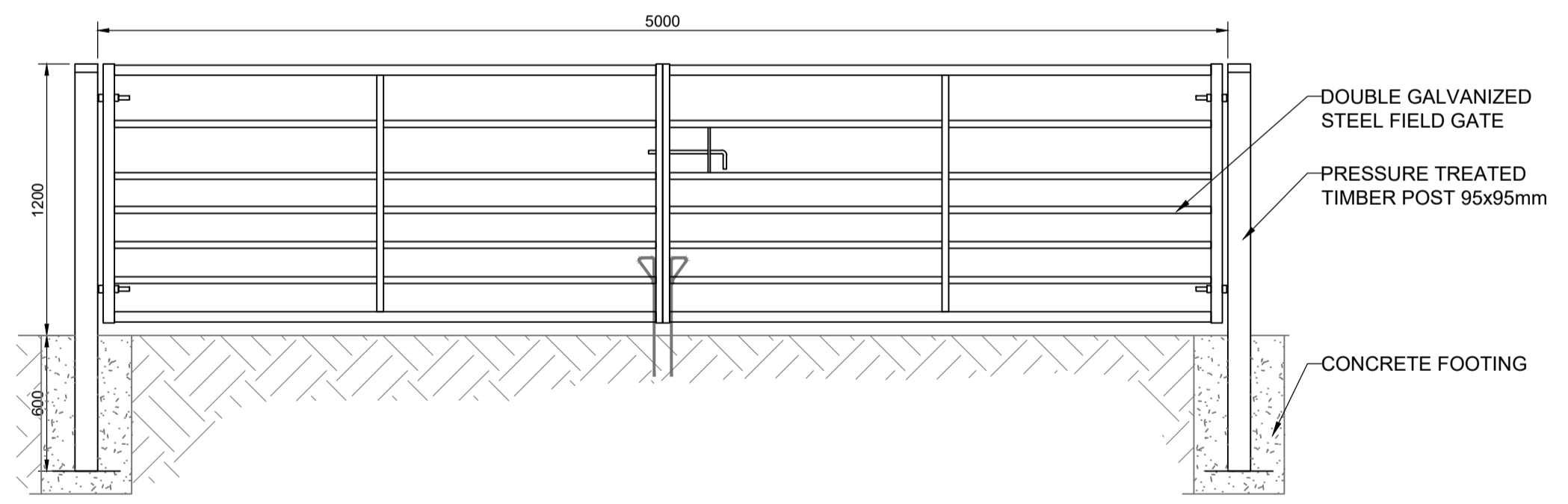
F: TYPICAL DETAIL OF PIPE CROSSING WITHIN EMBANKMENT  
SCALE 1:50



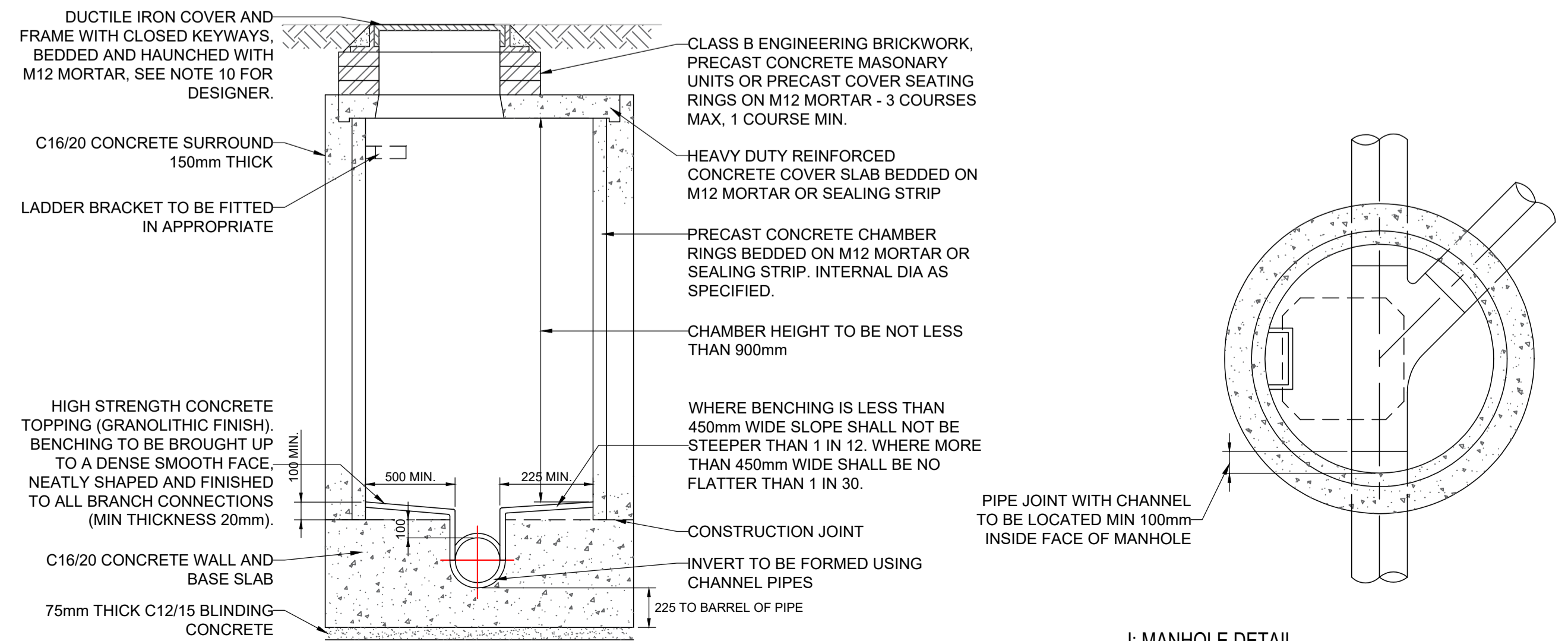
G: EXISTING FOUL SEWER DETAIL  
SCALE 1:50



H: STOCKPROOF FENCE DETAIL  
SCALE 1:25



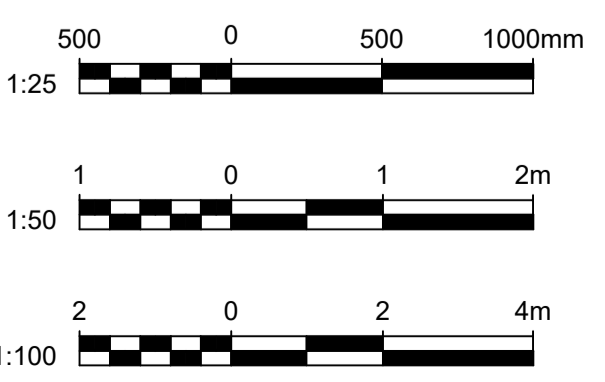
I: STEEL FIELD ACCESS GATE DETAIL  
SCALE 1:25



J: MANHOLE DETAIL  
SCALE 1:25

DIAMETER OF LARGEST PIPE IN MANHOLE (mm)	INTERNAL DIAMETER OF MANHOLE (mm)*
LESS THAN 375	1200
375 - 450	1350
500 - 700	1500
750 - 900	1800
975 - 1200	2100
1350 - 1500	2400

\* THE SPECIFIED DIAMETERS ARE THE MINIMUM REQUIRED. WHERE MORE THAN ONE PIPE ENTERS A MANHOLE THE DIAMETER MUST BE INCREASED BY AT LEAST ONE SIZE INCREMENT TO SUIT CIRCUMSTANCES.



- NOTES**
- ACCESS ROADS TO BE 3.50m WIDTH MINIMUM.
  - STOCKPROOF FENCE TO BE INSTALLED AS PER SUPPLIERS SPECIFICATION.
  - STEEL FIELD ACCESS GATE TO BE INSTALLED AS PER SUPPLIERS SPECIFICATION.
  - MANHOLE DETAIL: MANHOLE TYPE 2 (DEPTH TO SOFFIT LESS THAN 3m), AS PER STANDARD PRODUCTS - MANHOLES, REF NO. 057.
  - ALL DIMENSIONS IN MILLIMETRES UNLESS NOTED OTHERWISE.
  - TYPICAL DETAILS SHOWN INDICATIVELY & SUBJECT TO DETAILED DESIGN AND SUPPLIER / MANUFACTURER SPECIFICATION.
  - FOR ALL FLOOD MITIGATION AREA PIPEWORK DETAILS PLEASE REFER TO GTB DRAWINGS (TBC).
  - DRAWING TO BE READ IN CONJUNCTION WITH ASSOCIATED DESIGN DOCUMENTS.

**SAFETY, HEALTH AND ENVIRONMENTAL INFORMATION**

IN ADDITION TO THE HAZARDS OR RISKS NORMALLY ASSOCIATED WITH THE TYPES OF WORK DETAILED ON THIS DRAWING, THE FOLLOWING SIGNIFICANT RESIDUAL RISKS SHOULD BE NOTED. FURTHER DETAILS ARE INCLUDED IN THE CDM DESIGN RISK MANAGEMENT REGISTER

- CONSTRUCTION :**
- ACCESS THROUGH AND ADJACENT TO AN EXISTING WTW SITE THAT WILL BE OPERATIONAL DURING WORKS.
  - EXISTING FOUL SEWER MADE OF ASBESTOS CEMENT REQUIRE LOADING PERMISSION FROM SWS TO CARRY OUT WORKS. TEMPORARY UTILITIES PROTECTION MAY BE REQUIRED.
  - WORKING WITHIN AN AREA WITH LIMITED STORAGE AND STOCKPILING SPACE WITH NEED TO ALLOW FOR APPROPRIATE TURNING AND MOVING SPACE FOR MACHINES.
  - WORKING ADJACENT TO AGRICULTURAL LANDS WITH NEED TO MANAGE DRAINAGE AND STOCKPILED MATERIAL.
  - WORKING WITH SOILS THAT MAY BECOME WATERLOGGED DURING WET WEATHER AND WILL REQUIRE APPROPRIATE WATER AND SILT MANAGEMENT.

- MAINTENANCE, CLEANING AND OPERATION :**
- OPERATING WITHIN SITE THAT MAY BE OPEN TO THE PUBLIC FOR USE.
  - OPERATING SITE ADJACENT TO AGRICULTURAL LAND WITH NEED TO MANAGE BOUNDARIES AND ACCESS APPROPRIATELY.

**DECOMMISSIONING OR DEMOLITION :**

AS FOR CONSTRUCTION.

**HAZARD / RISKS**

HEALTH AND SAFETY RISK  
1 - FOUL SEWER UNDERSTOOD TO BE MADE OF ASBESTOS CEMENT

**CURRENT VERSION INFORMATION**

Initial Status or WIP  
XXXXXX.

DATE	ORIG	CHKD	REVD	APPR	REV	STS	REASON FOR ISSUE
24/04/24	JF	AC	AC	AC	C02	A5	SUITABLE FOR CONSTRUCTION
29/01/24	JF	AC	AC	AC	C01	A5	SUITABLE FOR CONSTRUCTION
24/11/23	JF	AC	AC	AC	P01	S3	REVIEW AND COMMENT

DATE	ORIG	CHKD	REVD	APPR	REV	STS	REASON FOR ISSUE
24/04/24	JF	AC	AC	AC	C02	A5	SUITABLE FOR CONSTRUCTION
29/01/24	JF	AC	AC	AC	C01	A5	SUITABLE FOR CONSTRUCTION
24/11/23	JF	AC	AC	AC	P01	S3	REVIEW AND COMMENT

**Southern Water**  
Yeoman Road  
Worthing  
West Sussex  
BN13 3NX  
telephone (01903) 264444  
fax (01903) 691435

**GTB**  
JOINT VENTURE  
Galliford Try Infrastructure Limited  
and Binmies UK Limited  
Joint Venture,  
Lewes Road, Falmer,  
Brighton, East Sussex,  
BN1 9PY

**VESI ENVIRONMENTAL**  
SOLUTIONS BY NATURE

PROJECT TITLE  
**STAPLEFIELD WTW**

DRAWING TITLE  
**TYPICAL DETAILS**

SITE UNIT MNEMONIC	SITE UNIT NO.	MASTER SIZE
STPFIELD	101464	A1
PRN	SCALE	STATUS
752214	AS SHOWN	A5
S.W. DRAWING NO.	REVISION	
752214-UAX-ZZ-DR-EN-00005	C02	