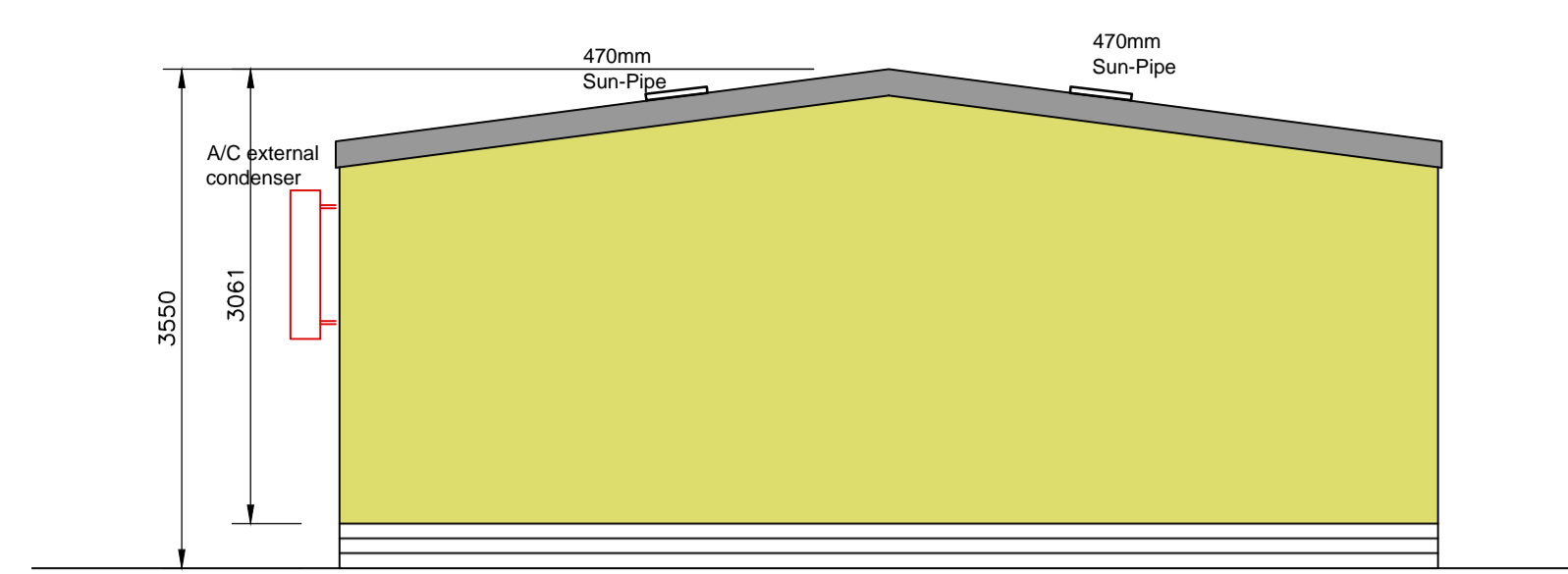
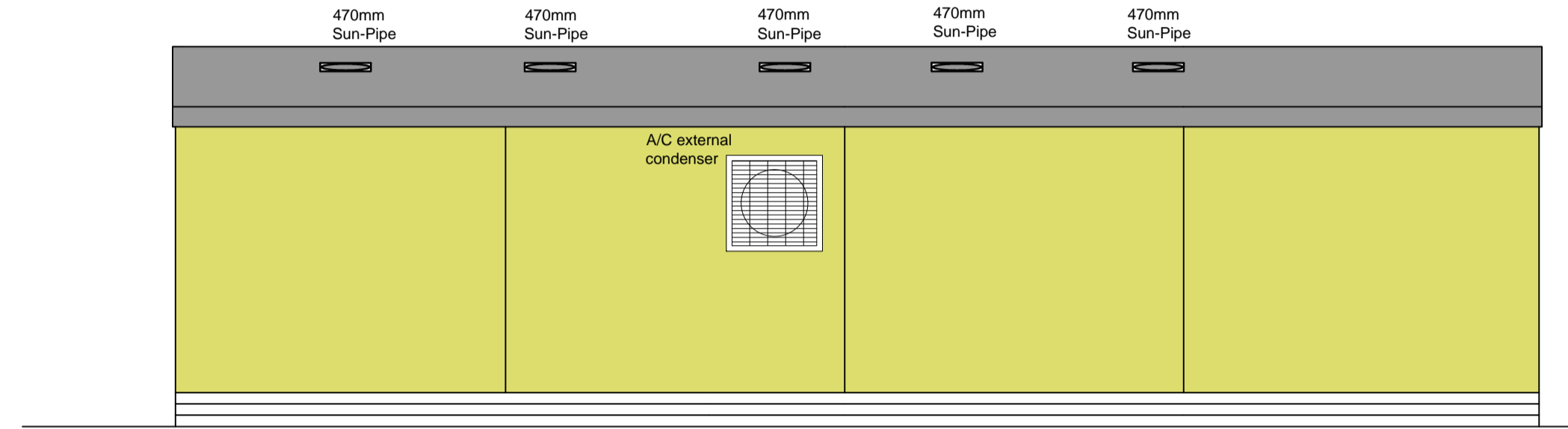


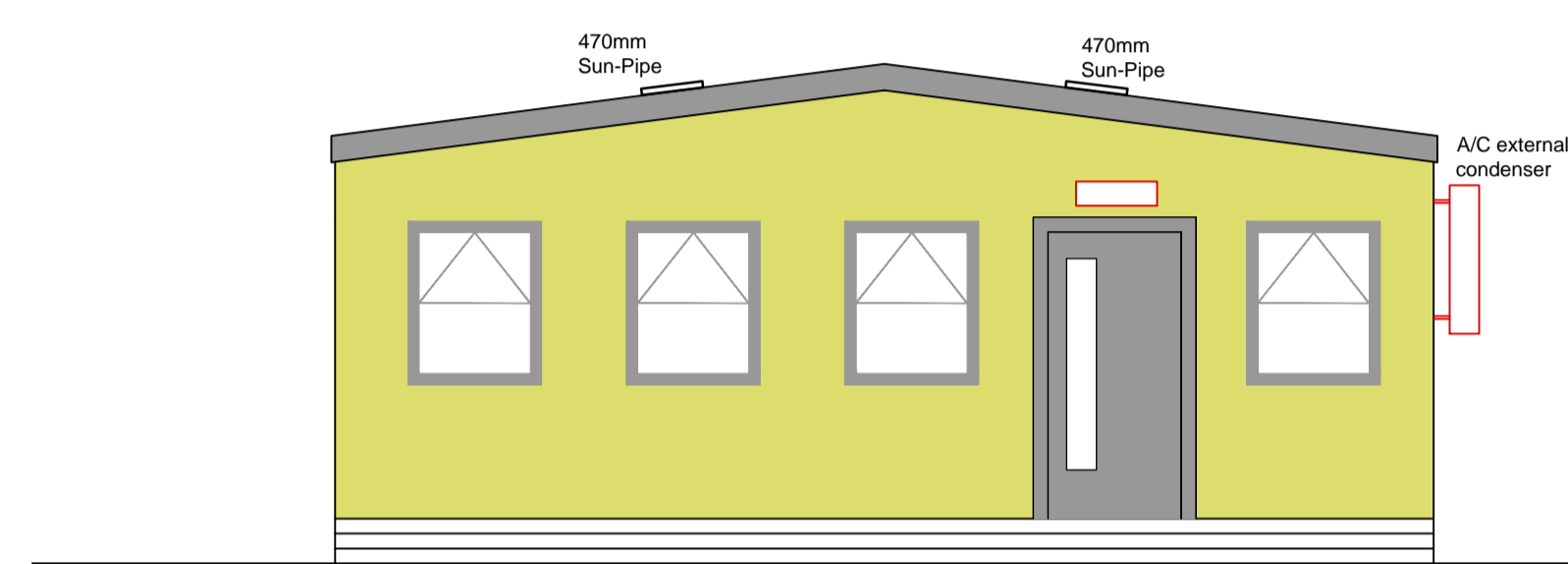
ELEVATION A
SCALE 1:50



ELEVATION B
SCALE 1:50

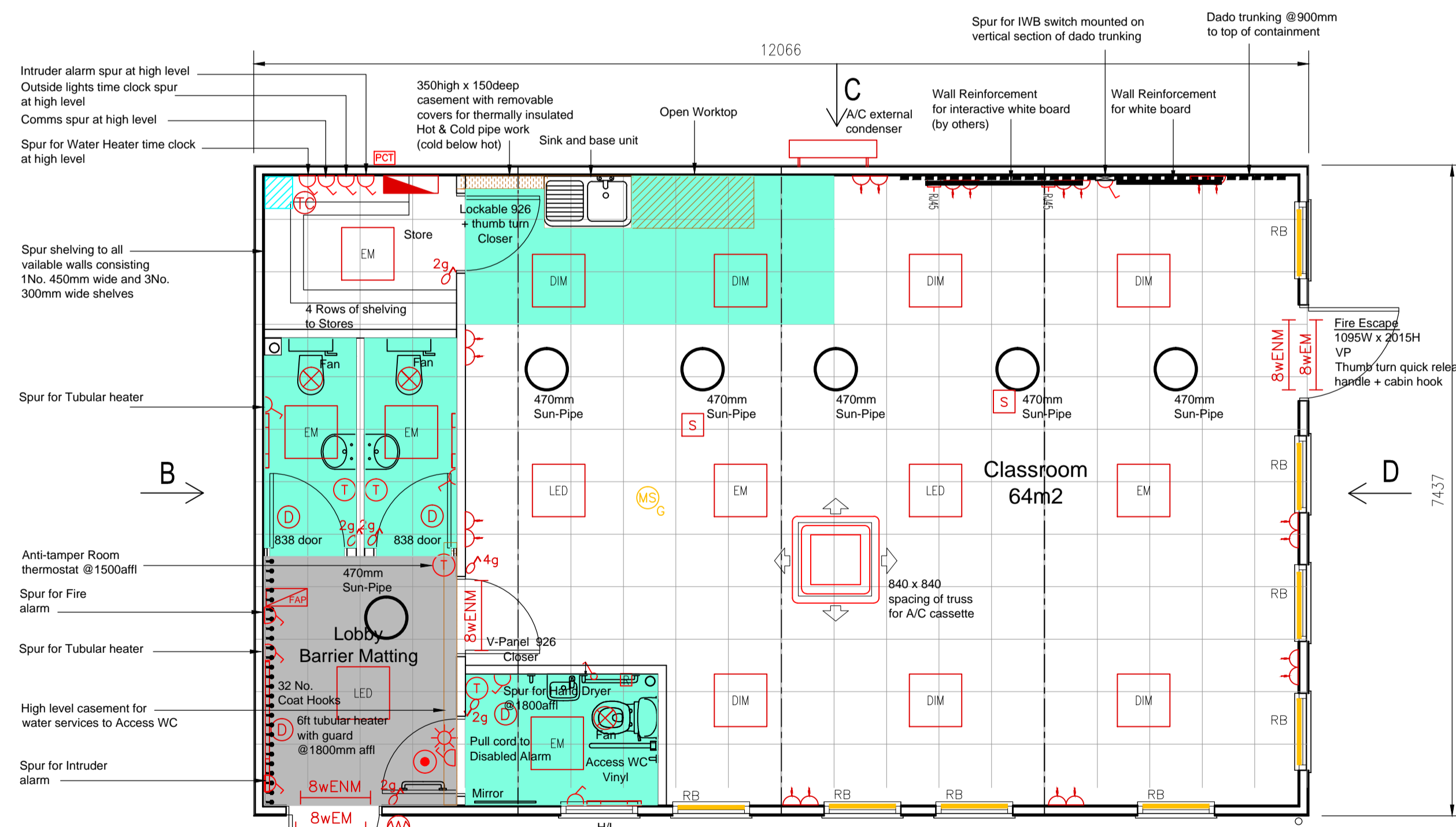


ELEVATION C
SCALE 1:50



ELEVATION D
SCALE 1:50

NOTES
1.1 Do not scale.
1.2 All dimensions are in millimetres unless otherwise specified.



FLOOR PLAN
SCALE 1:50

KEY

- Distribution board
- 600x600mm recessed 48W LED 5700k white opal
- 600x600mm recessed 48W LED 5700k dimmable white opal
- 600x600mm recessed 48W LED 5700k Emergency white opal
- 8w Emergency maintained light (250mm from ceiling)
- 8w Emergency non maintained light (250mm from ceiling)
- Single socket for IWB controlled switched at spur
- Double socket (540mm AFFL)
- Fused Spur
- School Voice/Data point Single gang back box with twin port RJ45 outlet
Allow for Draw wires required for data/phone points
- Grid switch (1040mm AFFL)
- Air Con Fan Unit (840x840 opening)
- Motion Sensor - MWS6-DD
- Danler Sensor (CESF PIR)
- Fan
- 3Pole Isolator for Fan
- Tubular heater with guard
- Room thermostat with anti-tamper guard
- Time Clock control
- Window roller blind
- Fire alarm panel
- Fire alarm break glass call point
- Smoke detector
- Fire alarm beacon
- Photo-cell and programmable timer

REVISIONS	CHK	DATE
B EXTERIOR FINISH		17/05/13
A FIRST ISSUE		14/05/13

CLIENT	HAMPSHIRE COUNTY COUNCIL
--------	--------------------------

MRC
MARTIN REYNOLDS CONSTRUCTION

183 THE DROVE
BARRORWAY DRIVE
DONWHAM MARKET
NORFOLK PE38 6AL
TEL: 01360 324237
FAX: 01360 324232
EMAIL: sales@mrcconstruction.co.uk
www.martinreynoldsconstruction.co.uk

FILE NUMBER	DRAWING No.	REVISION
6846	M13-12	B

SITE DETAILS
LYNDHURST FIRST SCHOOL
LYNDHURST ROAD
WORTHING, W.SUSSEX BN11 2DG

Scale:	1:50 @ A1
DRAWN	DATE
RP	14/05/13