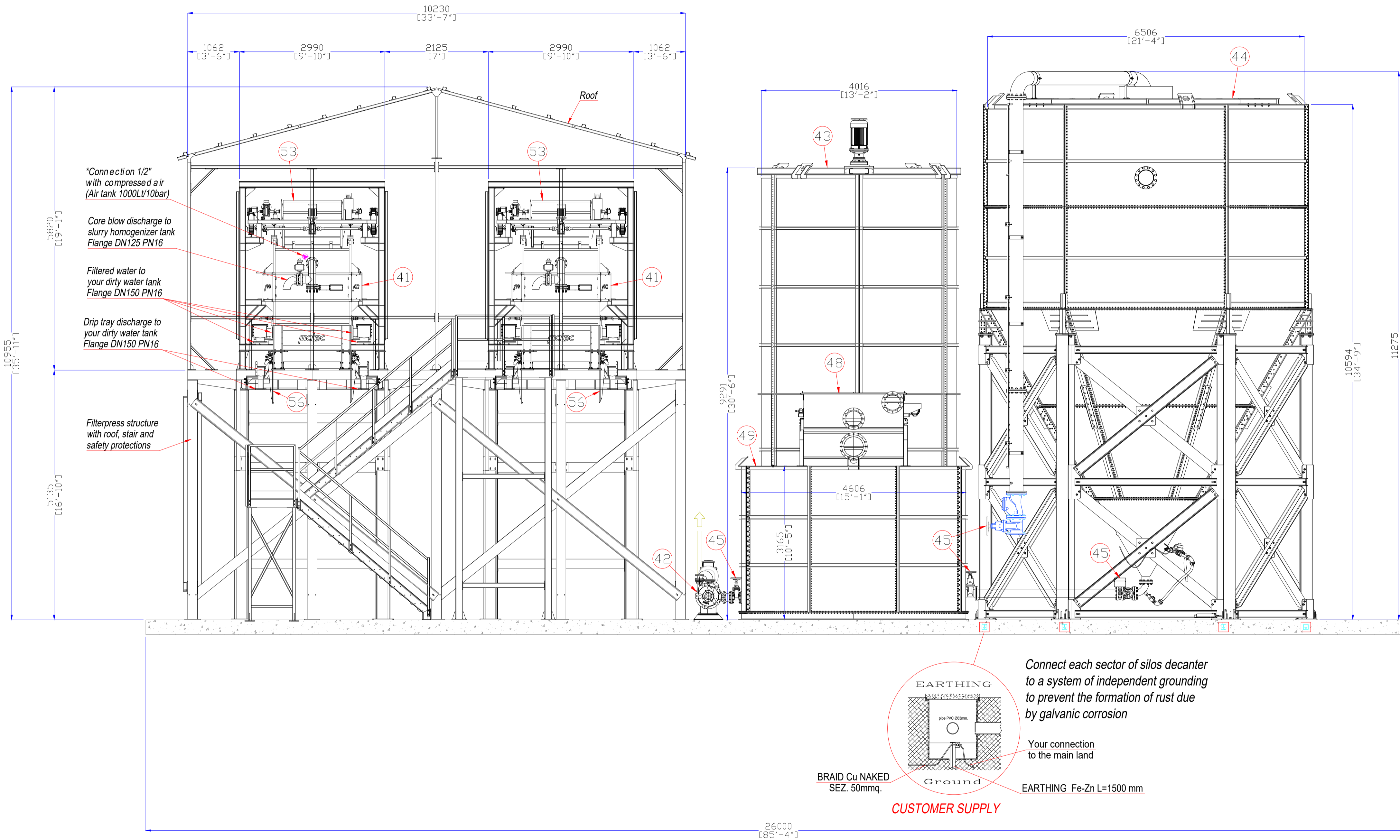


PRELIMINARY LAYOUT

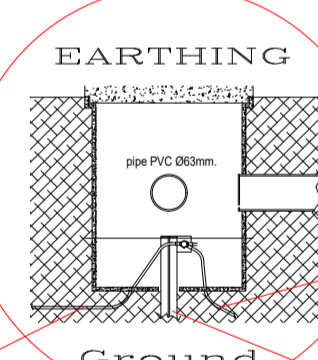
We recommend to NOT use this drawing for construction purpose.

Carefully verify the Layout proposal in every detail and kindly submit a confirmation or a request for modification

Customer signature: _____



Connect each sector of silos decanter to a system of independent grounding to prevent the formation of rust due by galvanic corrosion



BRAID Cu NAKED SEZ. 50mmq. GROUND EARTHING Fe-Zn L=1500 mm

CUSTOMER SUPPLY

***	Considering a material weight of 1.85 g/cm ³				
**	Considering a material weight of 1.8 g/cm ³				
*	Supplied by Customer				
60	Air tank	2.000 Liters			
59	Air tank	1.000 Liters			
58	Air compressor		15		
57	n°2 Flushing kit		2x 0.37		
56	n°2 Drip tray		2x (4+4)		
55	n°2 Robowash clean water tank	50.000 Liters		3.800	53.800
54	n°2 Robowash feeding pump		2x 30		
53	n°2 Robowash		2x (1.5x2)		
52	Clean water ralaunch group	Hydra 6000 LPM	90		
51	Clean water tank AISI304	100.000 Liters		5.000	105.000
50	Silos feeding pump	6000 LPM	30		
49	Dirty water tank AISI304	50.000 Liters		3.800	53.800
48	Ultra fine trash screen		0.25		
47	Flocculant automatic dosing station	DOSON	4.5		
46	Automatic flocculant making station	BIFLOC 4500A	3.55	650	3.650
45	Aut. and Man. valves				
44	Silos decanter AISI304	200.000 Liters		20.000	**380.000
43	Slurry homogenizer tank AISI304	BIFANG 100.000 Lt	18.5	11.000	***196.000
42	n°2 Filter feeding centrifugal pump	Delta 650-2H	2x 45	2x 900	
41	n°2 Filterpress	FP1500_130P	2x (22+4)	2x 42.000	2x***58.000

POS.	DESCRIPTION	MODEL	power kW	empty weight kg	full weight kg
LEGEND					
electrical connection point		water connection point		air connection point	
Customer			Scale	Drawing code	
Pendolf Verral			1:50	B02_20212141.1_00_07	
Lateral view _ Depuration plant/filtration		date		Rev. 07	
design by Bellegoni Giacomo		07.10.22		pg 7/11	
checked by Giovannelli Davide		date		format	
		07.10.22		A1	

- GENERAL NOTES**
- All the dimensions are in millimeters unless otherwise specified.
 - All electrical cables are excluded from Matec supply unless otherwise specified in the contract.
 - All pneumatic connections are excluded from Matec supply unless otherwise specified in the contract.
 - All water connections are excluded from Matec supply unless otherwise specified in the contract.
 - All civil works are excluded from Matec supply unless otherwise specified in the contract.
 - The dimensions of the civil works are not executive. The same must be calculated and sized by a local engineer and the responsibility is not under Matec responsibilities.
 - Equipments earthing is not included in Matec's scope of supply and responsibilities.
 - Equipments not quoted in the drawings are for reference only, their dimensions are not executive.

ELECTRICAL PANEL LEGEND			
MCC 05	WASHING ELECTRICAL PANEL, supplies and distributes power to washing system and clean water ralaunch pump	388.3	415 V 50 Hz
MCC 04	BIFLOC/DOSON ELECTRICAL PANEL, supplies and distributes power to flocculant station, doson system, silos feeding pump and ultra fine trash screen	38.3	415 V 50 Hz
MCC 03	SLURRY HOMOGENIZER ELECTRICAL PANEL, supplies and distributes power to slurry homogenizer tank and air compressor	33.5	415 V 50 Hz
MCC 01 MCC 02	FILTERPRESS ELECTRICAL PANEL, supplies and distributes power to hydraulic power unit, centrifugal pump, flushing kit, drip tray, robowash and robowash feeding pump	2x 112.37	415 V 50 Hz
Pos. Panel	Description	Power kW	Voltage Frequency

MATEC INDUSTRIES
 sede legale: via Montenapoleone, 8 20121 Milano (MI)
 sede operativa: via Aurelia Ovest, 383 54100 Massa (MS)
 tel. +39 0585 8306 fax. +39 0585 830508
 matec@matecindustries.com www.matecindustries.com

This documentation is the property of Matec Industries S.p.A.: third party reproduction and transmission is strictly forbidden. Transgressors will be prosecuted to the full extent of the law.